

New Location...
 Drill Deeper.....
 Abandonment.....

Company UNITED FUEL GAS CO.
 Address CHARLESTON, W. VA.
 Farm J. SANFORD LILLY
 Tract _____ Acres 122 Lease No. 45022
 Well (Farm) No. _____ Serial No. 6788
 Elevation (Spirit Level) 2612.67
 Quadrangle FLATTOP, W. VA.
 County SUMMERS District JUMPING BRANCH
 Engineer Paul C. Lovelace
 Engineer's Registration No. 669
 File No. 94-415 Drawing No. _____
 Date Oct. 23, -51 Scale 1" = 660'

STATE OF WEST VIRGINIA
 DEPARTMENT OF MINES
 OIL AND GAS DIVISION
 CHARLESTON

WELL LOCATION MAP
 FILE NO. SUMMERS-3

+ Denotes location of well on United States Topographic Maps, scale 1 to 62,500, latitude and longitude lines being represented by border lines as shown.

- Denotes one inch spaces on border line of original tracing.

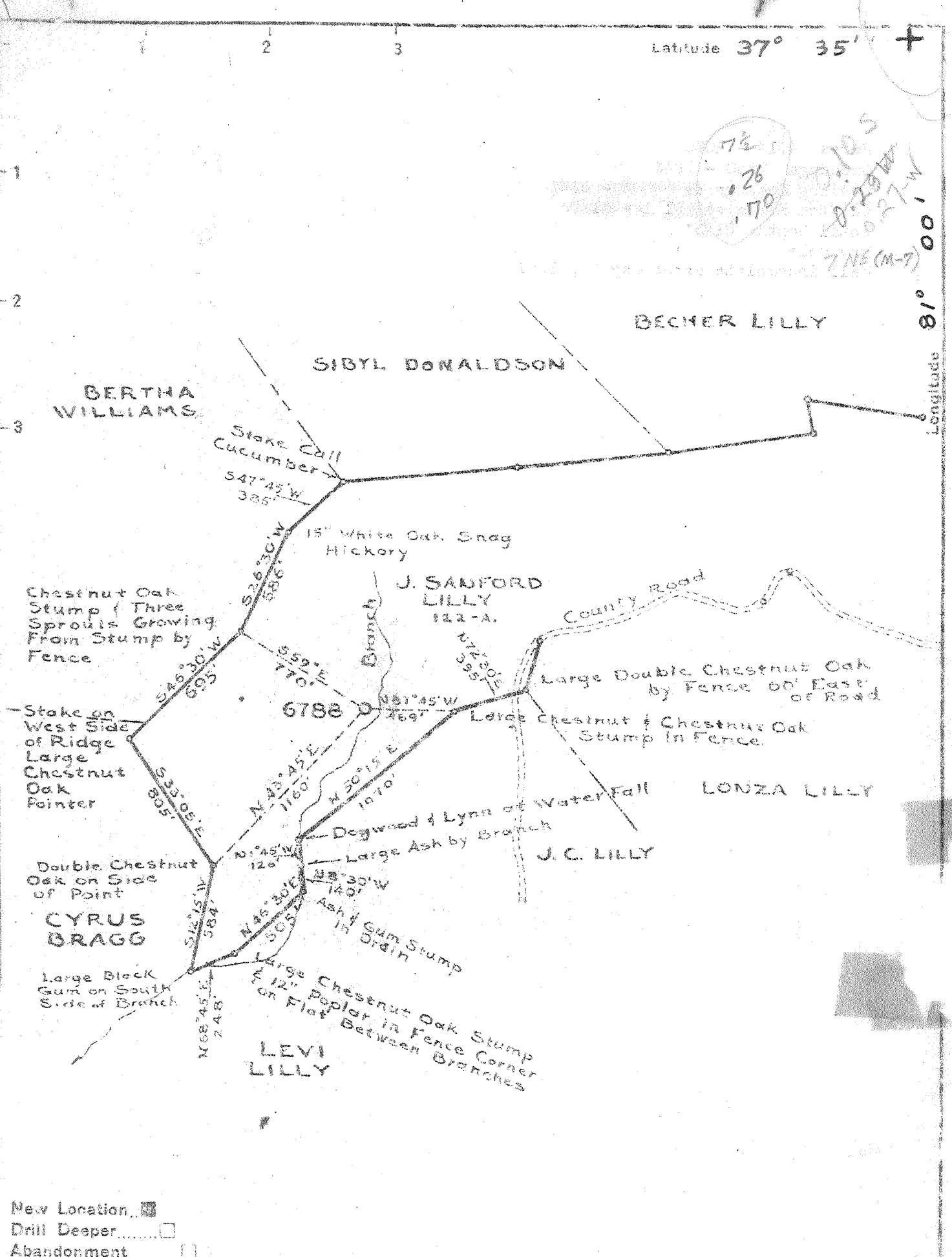
DEEP well

Latitude 37° 35'

+

7 1/2
26
170
8.10.5
8.27.10
027-W
7 NE (M-7)

Longitude 81° 00'



New Location
 Drill Deeper
 Abandonment

Company UNITED FUEL GAS CO.
 Address CHARLESTON, W. VA.
 Farm J. SANFORD LILLY
 Tract Acres 122 Lease No. 45022
 Well (Farm) No. 6788 Serial No. 6788
 Elevation (Spirit Level) 2612.67
 Quadrangle FLATTOP, W. VA SE
 County SUMMERS District JUMPING BRANCH
 Engineer Paul C. Corralius
 Engineer's Registration No. 669
 File No. 94-415 Drawing No.
 Date OCT. 23, -51 Scale 1" = 660'

STATE OF WEST VIRGINIA
 DEPARTMENT OF MINES
 OIL AND GAS DIVISION
 CHARLESTON

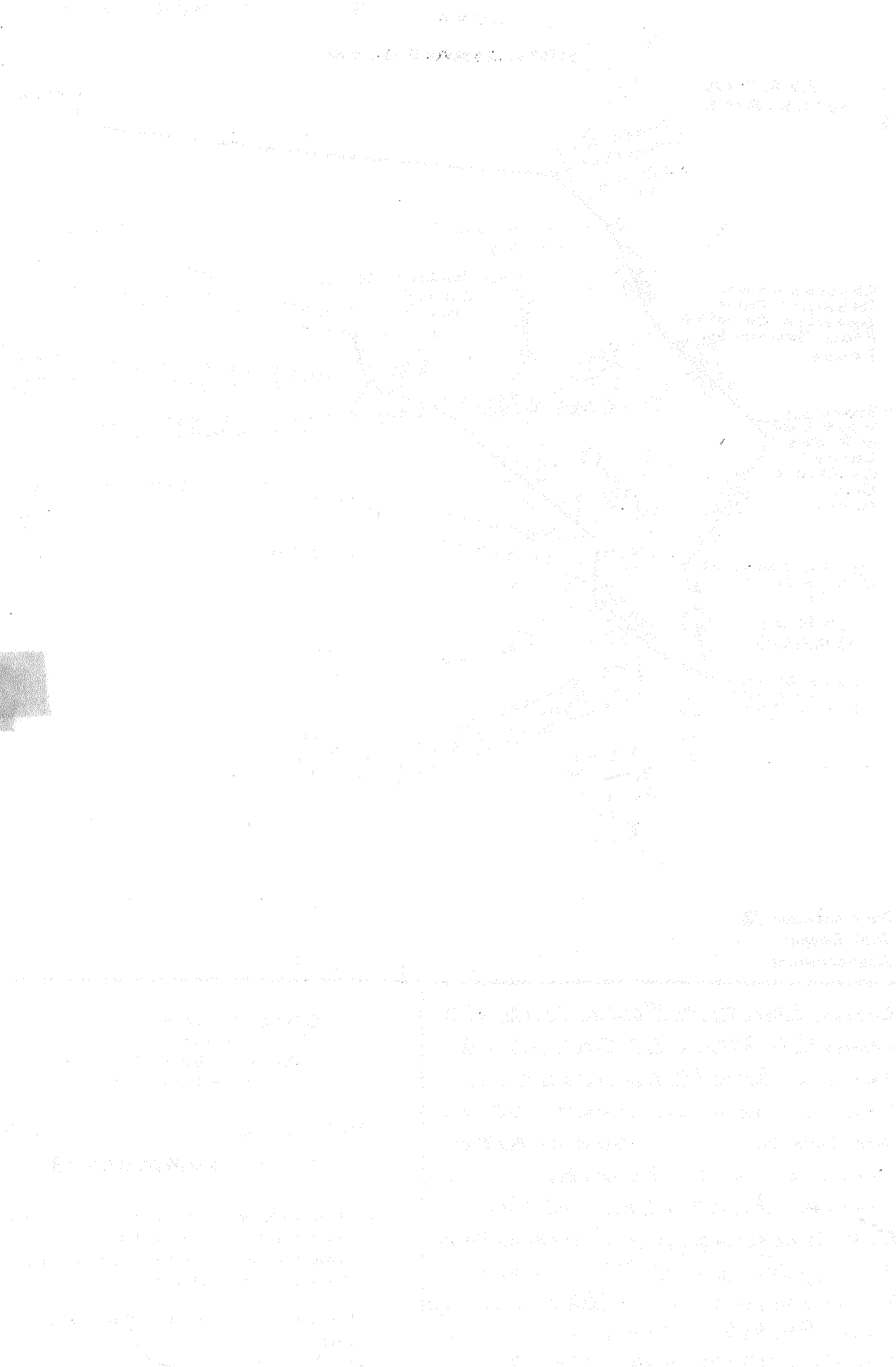
WELL LOCATION MAP
 FILE NO. SUMMERS-3

+ Denotes location of well on United States Topographic Maps, scale 1 to 62,500, latitude and longitude lines being represented by border lines as shown.

- Denotes one inch spaces on border line of original tracing. Deep Test
 1-0 0

No Drill Record file (Turn over on back side)

Berea 4014 - 4030
Onondaga 7880 - 7943
Healing Springs ss 8000 - 8047
Clifton Forge ss 81 - 8180
Total Depth 8185'
Dry Hole
Well incomplete as of May 24, 1954



J. HARVEY LILLY (U-6788-T) WELL

Jumping Branch District, Summers County, W. Va.

By United Fuel Gas Company

Drilled under permit Sum-3

Map Square 94-613

Elevation 2612.67' L.

Commenced drilling 5/11/54; completed 5/11/54.

Well was not shut. DRY HOLE.

20" casing, 19', 16", 630', 81'; 13 3/8", 480', 758.7' (left in);
 10 3/4", 40.5', 2065' (pulled); 8 5/8", 25', 2607' (pulled); 7",
 230', 7694' (left in); 5 1/2", 170', 7916' (left in).

Water, 225', 5 bbls./hr.; 4881', 1/2 bbl./hr.

Gas 2790' (when); 4855', (show gas, exhausted).

Well was plugged, 6/10/54.

Record from IPCCs. to OCT Feb. 11, 1960

	Top.	Bottom.
Clay	0	10
Gravel	10	39
Limestone	35	61
Slate	66	73
Sand	73	76
Slate	76	220
Lime	220	243
Slate	245	267
Lime	267	294
Black Lime	294	330
Slate	330	353
Black Lime	353	365
Light Lime	365	430
Slate	430	438
Black Lime	435	445
Slate	445	460
Blue Lime	460	495
Slate	495	512
Black Lime	512	551
Blue Lime	551	632
Slate	632	641
Light Lime	641	666
Pink Lime	666	668
Light Lime	668	690
Black Lime	690	730
Slate and shells	730	746
Black lime	746	796
Red lime	796	1033
Slate and shells	1033	1060
Red lime	1060	1065
Slate and shells	1065	1090
Red lime	1090	1210
Black lime	1210	1236
Red lime	1236	1315
Slate and shells	1315	1354
Red lime	1354	1666
Blue Lime	1666	1720
Red lime	1720	1830
Blue lime	1830	1965
Red lime	1965	2015

	Top.	Bottom.	
Slate and shale	2015	2029	
Blue lime	2029	2065	
Slate and shale	2065	2104	
Critty lime	2104	2255	
Critty lime	2255	2315	
Critty lime	2315	2502	
Black lime	2502	2520	
✓ Big lime	2520	2925	2613
Red lime	2925	2935	2520
lime	2935	3410	+ 93
Blue lime	3410	3460	
Red rock	3460	3475	
Gray lime	3475	3495	
Red limestone	3495	3530	
lime	3530	3620	
Slate and shale	3620	3795	
Sandy lime	3795	3845	
Slate and shale	3845	4020	
Sand	4020	4025	
Slate and shale	4025	4400	
Hard lime	4400	4435	
Slate and shale	4435	4775	
Critty lime	4775	5680	
Slate and shale	5680	6340	
lime	6340	6350	
Slate and shale	6350	6800	
White lime	6800	7000	
Black shale	7000	7160	
lime	7160	7300	
Slate and shale	7300	7390	
Black lime	7390	7400	
Slate and shale	7400	7545	
Shale	7545	7630	
lime	7630	7635	
Slate and shale	7635	7805	
✓ Black Shale	7805	7880	7880
✓ Coniferous	7880	7943	2613
✓ Wiskey	7943	7978	5267
✓ lime	7978	8000	
Healing Springs	8000	8047	
lime	8047	8121	
Clifton Forge	8121	8167	2943
lime	8167	8185	2613
TOTAL DEPTH		8185	5330

485

7978
2613
365



STATE OF WEST VIRGINIA
DEPARTMENT OF MINES
OIL AND GAS DIVISION

Quadrangle Flattop

Permit No. SUM-3

WELL RECORD

Oil or Gas Well Dry Hole
(KIND)

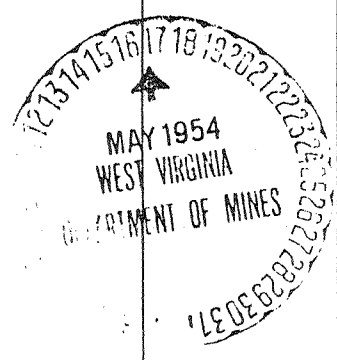
Company UNITED FUEL GAS CO.
Address P.O. Box 1273, Charleston 25, W. Va.
Name J. Sanford Lilly Acres 122
Location (waters) Suck Creek
Well No. 6788 Elev. _____
District Jumping Branch County Summers
The surface of tract is owned in fee by _____
Address _____
Mineral rights are owned by J. Sanford Lilly
Address Ellison, W. Va.
Drilling commenced 1-11-52
Drilling completed 4-11-54
Date Shot _____ From _____ To _____
With _____

Casing and Tubing	Used in Drilling	Left, in Well	Packers
Size " <u>20</u> "		<u>19</u>	
16		<u>76'</u>	Kind of Packer _____
13		<u>704'</u>	
10		<u>2055'</u>	Size of _____
8 1/4		<u>2688'</u>	
6 3/8			Depth set _____
5 3/16			
3			Perf. top _____
2			Perf. bottom _____
Liners Used _____			Perf. top _____
			Perf. bottom _____

Open Flow _____ /10ths Water in _____ Inch
_____ /10ths Merc. in _____ Inch
Volume _____ Cu. Ft.
Rock Pressure _____ lbs. _____ hrs.
Oil _____ bbls., 1st 24 hrs.
Fresh water 225' feet _____ feet
Salt water _____ feet _____ feet

CASING CEMENTED _____ SIZE _____ No. Ft. _____ Date _____
COAL WAS ENCOUNTERED AT _____ FEET _____ INCHES
_____ FEET _____ INCHES _____ FEET _____ INCHES
_____ FEET _____ INCHES _____ FEET _____ INCHES

Formation	Color	Hard or Soft	Top	Bottom	Oil, Gas or Water	Depth Found	Remarks
Surface (Clay)			0	10			
Level			10	35			
Limestone			35	68			
Slate			68	73			
Sand			73	76			
Slate			76	220			
Shale			220	245			
Slate			245	267			
Shale			267	294			
Shale (Black)			294	330'			
Slate			330	355			
Shale (Black)			355	365			
Shale (Light)			365	430'			
Slate			430	435			
Shale (Black)			435	445			
Slate			445	469			
Shale (Blue)			469	495			
Slate			495	512			
Shale (Pink)			512	551			
Shale (Blue)			551	632			
Slate			632	641			
Shale (Light)			641	666			
Shale (Pink)			666	668			
Shale (Light)			668	690			
Shale (Black)			690	730			
Slate Shells			730	746			
Shale (Black)			746	796			
Shale (Red)			796'	1038			
Slate Shells			1038	1060			
Shale (Red)			1060	1065			
Slate Shells			1065	1090			
Shale Red			1090	1210			
Shale (Black)			1210	1236			
Shale (Red)			1236	1315			
Slate Shells			1315	1554			
Shale (Red)			1554	1666			
Shale (Blue)			1666	1720			
Shale (Red)			1720	1830			



Formation	Color	Hard or Soft	Top	Bottom	Oil, Gas or Water	Depth Found	Remarks
me (Blue)			1830	1985			
me (Red)			1985	2015			
ate Shells			2015	2029			
ue Lime			2029	2065			
ate Shells			2065	2104			
me (Gritty)			2104	2255			
me (Hard)			2255	2395			
me (Soft)			2395	2415			
me Gritty			2415	2502			
me Black			2502	2520			
g Lime			2529	2925			
me Red			2925	2935			
me			2935	3410			
me Blue			3410	3460			
d Rock			1460	3475			
me Grey			3475	3490			
d Injun			3490	3530			
me			3530	3620			
ate Shells			3620	3795			
me Sandy			3795	3845			
ate Shells			3845	4020			
nd			4020	4025			
ate Shells			4025	4400			
me Hard			4400	4435			
ate Shells			4435	4775			
me Gritty			4775	5680			
ate Shells			5680	6240			
me			6240	6830			
ate Shells			6830	6880			
ite Lime			6880	7080			
ack Shale			7080	7160			
me			7160	7300			
ate Shells			7300	7380			
me Black			7380	7400			
ate Shells			7400	7545			
ale			7545	7630			
me			7630	7635			
ate & Shells			7635	7805			
ack Shale			7805	7876			
rniferous			7876	7943			
lskany Sand			7943	7953			
me			7953	7958			
nd			7958	7975			
me Sandy			7975	7988			
ack Lime			7988	8107			
nd Dark			8107	8185			
tal depth			8185				

Date May 14, 1954

APPROVED UNITED FUEL GAS CO. Owner

By S.R. Jewell
(Title)

Mgr. Civil Engineering Department