

Latitude

37° 42' 30"

8059

0.0635
25' loc
Kia 7/16/1989
1.105
0.46W

Longitude

Topo Location

7.5' Loc. _____ 15' Loc. B.98S
_____ (calc.) 0.46W

Company _____

Farm _____

5' Quad Big Bend NW
(sec.) _____

5' Quad Hinton _____

istrict _____

WELL LOCATION PLAT

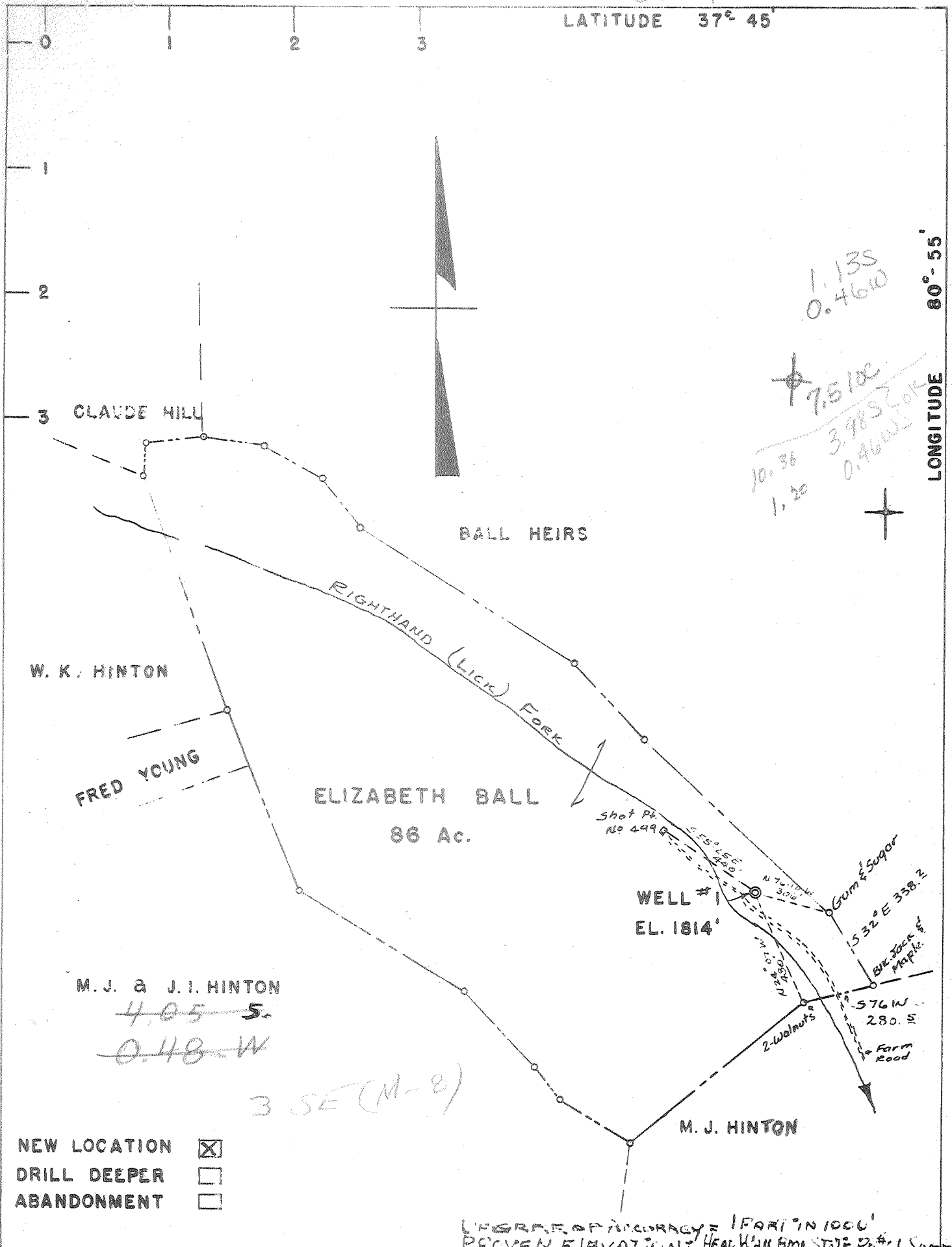
County 089 Permit 5

DEEP WELL

37 4230

LATITUDE 37° 45'

LONGITUDE 80° - 55'



- NEW LOCATION
- DRILL DEEPER
- ABANDONMENT

PROVEN ELEVATION NE HEAD W. H. STATE RD #1 of Summers Co

Company ANCHOR GAS COMPANY
 Address Empire Bldg., Pittsburgh, Penn.
 Farm ELIZABETH BALL
 Tract _____ Acres 86 Lease No. _____
 Well (Farm) No. 1 Serial No. _____
 Elevation (Spirit Level) 1814 Ft.
 Quadrangle BIG BEND - NW Hinton
 County SUMMERS District Jumping Branch
 Engineer Don H. McShine
 Engineer's Registration No. 3088
 File No. _____ Drawing No. _____
 Date 7-13-64 Scale 1" = 500'

STATE OF WEST VIRGINIA
 DEPARTMENT OF MINES
 OIL AND GAS DIVISION
 CHARLESTON

WELL LOCATION MAP
 FILE NO. SUM-5

Denotes well location on U.S. Topographic Maps, scale 1 to 62,500, latitude and longitude lines as shown on border lines.
 Denote one inch spaces on the border of the original tracing.

Samples 15-E (55-8270)

Deep Well 1-0-0

Location
 4.05 S. 37°45'
 0.48 W. 80°55'



STATE OF WEST VIRGINIA
 DEPARTMENT OF MINES
 OIL AND GAS DIVISION

Quadrangle Big Bend

Permit No. SUM-5

WELL RECORD

Oil or Gas Well Dry
 (KIND)

Company Anchor Gas Company
 Address 1208 Empire Bldg., Pgh., Pa.
 Farm M. Elizabeth Ball Acres 86
 Location (waters) Lick Fork
 Well No. 1 Elev. 1814'
 District Jumping Branch County Summers
 The surface of tract is owned in fee by M. Eliz. Ball
Box 539 Address Hinton, W. Va.
 Mineral rights are owned by M. Eliz. Ball
Box 539 Address Hinton, W. Va.

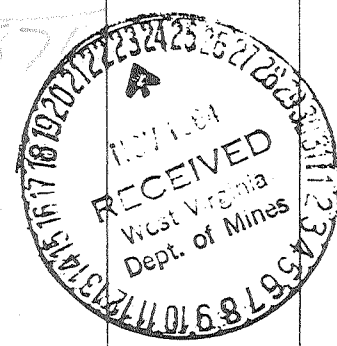
| Casing and Tubing | Used in Drilling | Left in Well | Packers |
|-------------------|------------------|---------------|----------------------|
| Size | | | Kind of Packer |
| 16 | | | |
| 13 - 3/8 | 57' | 57' (32 sxs.) | |
| 10 | | | Size of |
| 8 1/2 - 5/8 | 2989' | 2115' | |
| 6 3/8 | | | Depth set |
| 5 3/16 | | | |
| 3 | | | Perf. top 1835-36 |
| 2 | | | Perf. bottom 1845-55 |
| Liners Used | | | Perf. top 2880 |
| | | | Perf. bottom 2890 |

Drilling commenced July 30, 1964
 Drilling completed October 14, 1964
 Date Shot - From - To -
 With
 Open Flow /10ths Water in _____ Inch
 /10ths Merc. in _____ Inch
 Volume _____ Cu. Ft.
 Rock Pressure _____ lbs. _____ hrs.
 Oil _____ bbls., 1st 24 hrs.
 WELL ACIDIZED 10/10/64 (Dowell)
10,000 gals. HCl into Greenbrier
 WELL FRACTURED -

CASING CEMENTED 8-5/8" SIZE 2989 No. Ft. 8/10/64 Date
320 sxs. cement using 2% CaCl
 COAL WAS ENCOUNTERED AT _____ FEET _____ INCHES
 _____ FEET _____ INCHES _____ FEET _____ INCHES
 _____ FEET _____ INCHES _____ FEET _____ INCHES

RESULT AFTER TREATMENT High initial flow after acid - after 12 hr. open flow less than 200 M
 ROCK PRESSURE AFTER TREATMENT 75 psig. after 72 hours
 Fresh Water Not recorded Feet _____ Salt Water 3065 Feet _____

| Formation | Color | Hard or Soft | Top | Bottom | Oil, Gas or Water | Depth | Remarks |
|---|-------|--------------|------|---------|--|-------|----------------------|
| Mauch Chunk shales, ss & siltstones Bluefield Group | | | 0 | 585 | | | 1814 1290 524 |
| Lime | | | 585 | 1155 | | | |
| Pencil Cave Shale | | | 1155 | 1188 | | | |
| Reynolds Lime - <i>little lime</i> | | | 1188 | 1221 | | | |
| Greenbrier Fm. | | | 1221 | 1290 | | | |
| Maccrady Fm. | | | 1290 | 2390 | (3, 306 Mcf @ 1835-38 & 1845-65 eventually mudded off) | | |
| Pocono Fm. | | | 2390 | 2467 | | | |
| Berea ss | | | 2467 | 2904 | | | |
| Devonian Shales | | | 2880 | 2904 | s. w. @ 3065 | | 8238 1814 6424 |
| Marcellus Shale | | | 2904 | 6720 | | | |
| Onondaga Ls. | | | 6720 | 6910 | | | |
| Chert & Limestone - <i>HRV</i> | | | 6910 | 6981 | | | |
| Oriskany Sandstone | | | 6930 | 6981 | | | |
| Helderberg Fm. | | | 6981 | 7001 | | | |
| Salina formation dolomite, shale, ls., anhydrite | | | 7001 | 7225(?) | | | |
| Williamsport Sand (<i>Newburg</i>) | | | 7225 | 7685 | | | 7685 6981 704 |
| McKenzie formation | | | 7685 | 7718 | | | |
| Keefe ss | | | 7718 | 7859 | | | |
| Rosehill shale | | | 7718 | 7859 | | | |
| Cacapon sand | | | 7859 | 7874 | | | |
| Tuscarora ss | | | 7874 | 8061 | | | 6910 1814 5096 |
| Juniata formation | | | 8061 | 8093 | | | |
| T. D. | | | 8093 | 8238 | | | |
| | | | 8238 | 8272 | | | |



Elizabeth Hall # 2 21,000 S 37°45'
 Summers Co. W. Va 2,500 W 80°55'
 Tamping Branch Distr. EL 1814' KB 1822'

| SYSTEM | FORMATION | Tops (1099) |
|------------|------------------|---------------------|
| MISS | GREENBRIER LS | 1290' |
| | Maccrady | 2290 (spl) |
| | POCONO | 2370 (spl) |
| | Berea | 2880 |
| DEVONIAN | Devonian shales | 2904 |
| | MARCELLUS | 6720 |
| | ONONDAGA | 6910 |
| | CHERT MEMB. | 6930 |
| | DRISKANY | 6981 |
| | HELDERBERG | 7001 |
| Silurian | SALINA FM | 7217 |
| | WILLIAMSPORT SS | 7685 |
| | McKenzie | 7718 |
| | Keefer ss. | 7859 |
| | Rosehill sh. | 7874 |
| | Cacapon ss memb. | 8061 |
| TUSCORA SS | 8093 | |
| Ordo. | Juniata | 8238 |
| | | TD 8272' |

Sincerely yours,
 Thor "Howie" HAURYLUK
 Anchor GAS Co.