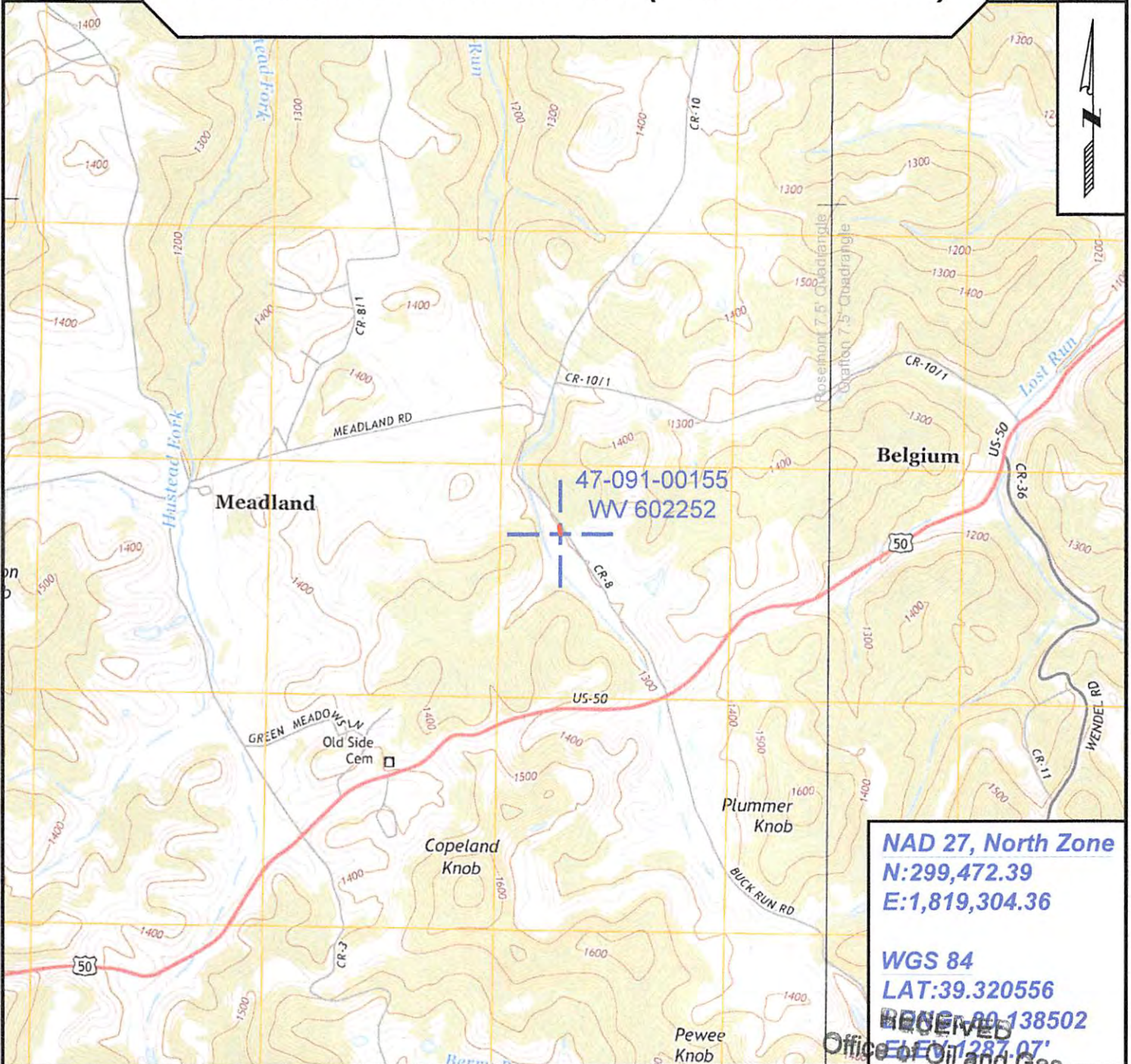


9100155P

Topo Quad: Rosemont 7.5' Scale: 1" = 2000'
 County: Taylor Date: October 6, 2016
 District: Booths Creek Project No: 47-091-00155

47-091-00155 WV 602252 (R. B. Gall #2252)

Topo



NAD 27, North Zone
N:299,472.39
E:1,819,304.36

WGS 84
LAT:39.320556
LONG:-80.138502

RECEIVED
 FEB 13 2017
 Office of Oil and Gas



SURVEYING AND MAPPING SERVICES PERFORMED BY:

ALLEGHENY SURVEYS, INC.

1-800-482-8606
 237 Birch River Road
 Birch River, WV 26610
 PH: (304) 649-8606
 FAX: (304) 649-8608

PREPARED FOR:

EQT Production Company

JAN 11 2017
 W.A. Box 280
 Bridgeport, WV 26330
 Department of
 Environmental Protection
 02/17/2017