

**PDC MOUNTAINEER, LLC
WELL NO. OES 1HM**

2,846' TOP HOLE
5,534' BOTTOM HOLE

LATITUDE 39° 27' 30"

NOTES:

-PLAT ORIENTATION, CORNERS, AND WELL REFERENCES ARE BASED UPON THE GRID NORTH MERIDIAN FOR THE WV STATE PLANE COORDINATE SYSTEM, NORTH ZONE NAD 27. WELL LOCATION REFERENCE TIES ARE BASED UPON THE MAGNETIC MERIDIAN.

-THERE APPEARS TO BE NO WATER WELLS LOCATED WITHIN 1000' OF WELL OES 1HM.

LEROY R. & EVELYN J. MUSGROVE
TM 28 PAR 1
DB 733 PG 855
78.0 AC±

WILLIAM E. & MARGIE R. STEVENS
TM 26 PAR 8
DB 938 PG 454
30.80 AC±

WILLIAM D. & VIRGINIA L. BIGELOW
TM 26 PAR 8.2
DB 1041 PG 837
35.13 AC±

FRUITRIDGE, LLC
TM 26 PAR 9
DB 962 PG 162
59.5 AC±

FRUITRIDGE, LLC
TM 26 PAR 10
DB 962 PG 162
60.5 AC±

LEROY R. & EVELYN J. MUSGROVE
TM 28 PAR 1.1
DB 733 PG 855
D.52 AC±

MARK D. MORAN
TM 28 PAR 3
DB 1038 PG 233
239.719 AC±

DANIEL W. & SONDR A. JACOBS
TM 26 PAR 8.3
DB 989 PG 66
35.10 AC±

NATHANIEL SAMUEL STEVENS,
NATHANIEL SAMUEL STEVENS II,
& THERESA STEVENS
TM 26 PAR 8.4
DB 938 PG 458
35.51 AC±

JAMES O. MORAN & JUDITH A. MORAN, TRUSTEES
MORAN LIVING TRUST
TM 27 PAR 1
DB 855 PG 112
144.0 AC±

ORTHODOX EDUCATIONAL SOCIETY
TM 27 PAR 2
DB 402 PG 440
502.5 AC±

HOPEFUL HOLLOW LLC,
JAMES O. MORAN, & REVA P. WILLIAMS
TM 26 PAR 11
DB 983 PG 163
77.6 AC±

JACOBS FAMILY TRUST
TM 26 PAR 12
DB 1033 PG 561
42.0 AC±

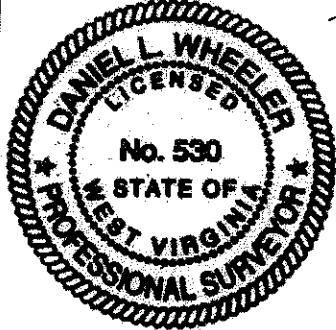
SAMMY R. & SARA LEE JACOBS FAMILY TRUST
TM 2 PAR 4

CHARLES E. McDONALD
TM 2 PAR 6
DB 126 PG 10
18.5 AC±

RUTH E. PYSSELL
TM 2 PAR 7
DB 158 PG 450
70.62 AC±

RUTH E. HAUGHT
TM 27 PAR 3
WB 121 PG 855
300.0 AC±

TH BH
DENOTES LOCATION OF WELL ON UNITED STATES TOPOGRAPHIC MAP



Daniel L. Wheeler, P.S. 530

I, THE UNDERSIGNED, HEREBY CERTIFY THAT THIS PLAT IS CORRECT TO THE BEST OF MY KNOWLEDGE AND BELIEF AND SHOWS ALL THE INFORMATION REQUIRED BY LAW AND THE REGULATIONS ISSUED AND PRESCRIBED BY THE DIVISION OF ENVIRONMENTAL PROTECTION.

FILE NO. 030-2000

SCALE: 1"=1000'

MINIMUM DEGREE OF ACCURACY: 1 in 2500

PROVEN SOURCE OF ELEVATION: OPUS SURVEY GRADE GPS

STATE OF WEST VIRGINIA
DIVISION OF ENVIRONMENTAL PROTECTION
OFFICE OF OIL & GAS

DATE OCTOBER 12, 2011

OPERATOR'S WELL NO. OES NO. 1HM

API WELL NO.

47 - 091 - 01264H
STATE COUNTY PERMIT

WELL TYPE: OIL GAS LIQUID INJECTION WASTE DISPOSAL (IF "GAS"), PRODUCTION STORAGE DEEP SHALLOW

LOCATION: ELEVATION: 1945.5' WATER SHED: WHITE DAY CREEK

DISTRICT: FETTERMAN COUNTY: TAYLOR

QUADRANGLE: GLADESVILLE 7.5' ACREAGE: 502.5 AC±

SURFACE OWNER: ORTHODOX EDUCATIONAL SOCIETY LEASE ACREAGE: 573.11 AC ±

OIL & GAS ROYALTY OWNER: ORTHODOX EDUCATIONAL SOCIETY, ET. AL. LEASE NO. _____

PROPOSED WORK: DRILL CONVERT DRILL DEEPER REDRILL FRACTURE OR STIMULATE

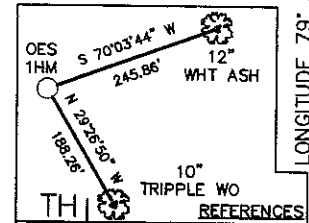
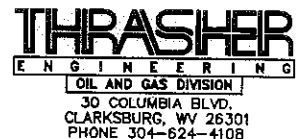
PERFORATE NEW FORMATION PLUG OFF OLD FORMATION OTHER PHYSICAL CHANGE IN WELL (SPECIFY) _____

PLUG AND ABANDON _____ CLEAN OUT AND REPLUG _____

TARGET FORMATION: MARCELLUS SHALE ESTIMATED DEPTH: 7,965' TVD / 14,800' MD

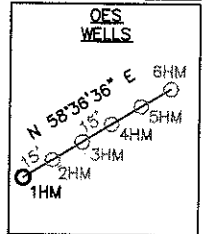
WELL OPERATOR: PDC MOUNTAINEER, LLC
ADDRESS: 120 GENESIS BOULEVARD
BRIDGEPORT, WV 26330

DESIGNATED AGENT: JAMES A HAGA
ADDRESS: 120 GENESIS BOULEVARD
BRIDGEPORT, WV 26330

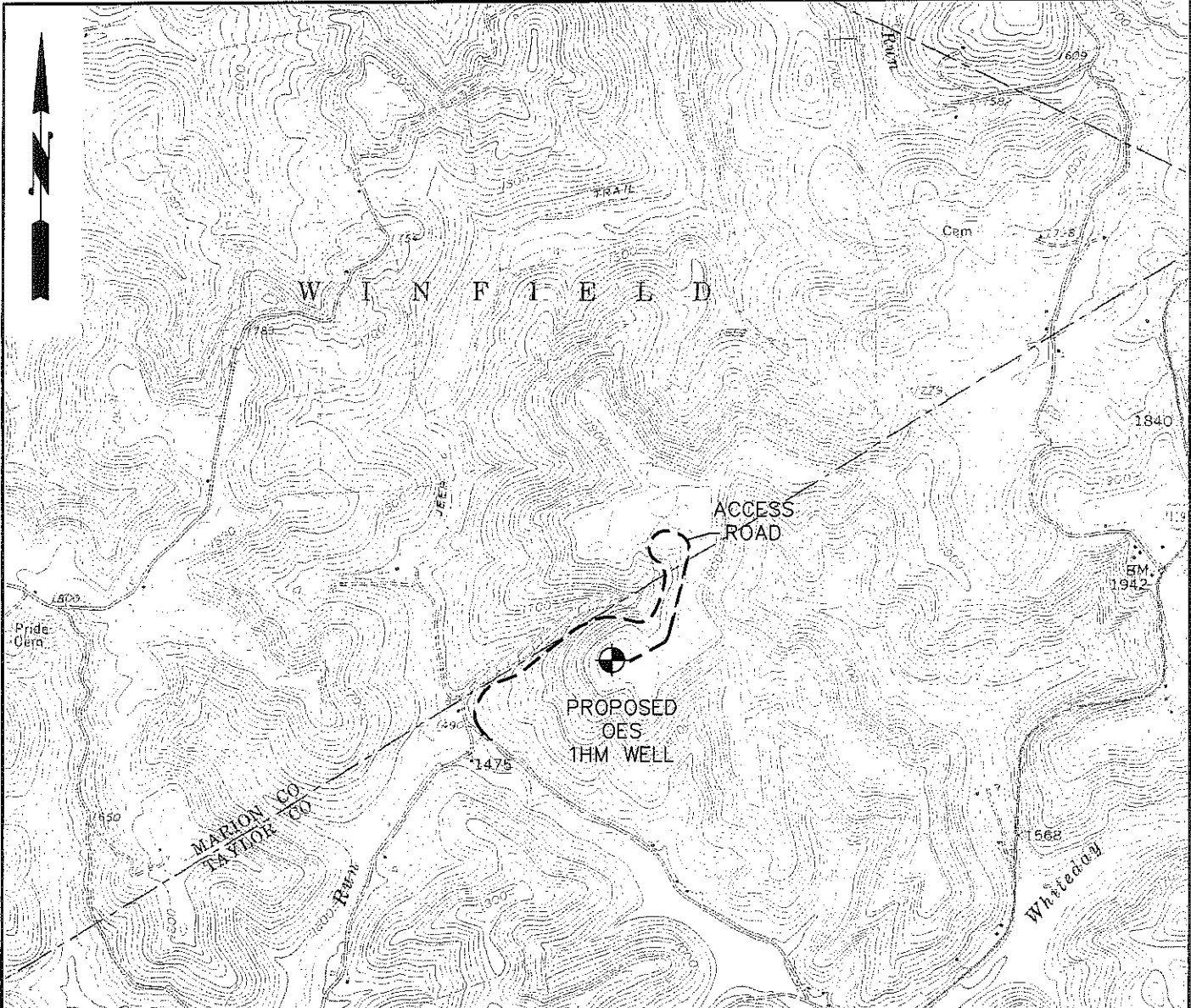


| WELL NO. OES 1HM TOP HOLE | |
|---|--------------|
| STATE PLANE COORDINATES (NAD 27 NORTH ZONE) | |
| N: | 341356.1163 |
| E: | 1867688.0871 |
| LAT: 39° 26' 10.587" | |
| LON: 79° 58' 06.433" | |
| STATE PLANE COORDINATES (NAD 83 NORTH ZONE-METER) | |
| N: | 104057.283 |
| E: | 559680.142 |
| UTM COORDINATES (NAD 83-METER) | |
| N: | 4365491.297 |
| E: | 588775.517 |
| LAT: 39° 26' 10.914" | |
| LON: 79° 58' 05.688" | |

| WELL NO. OES 1HM BOTTOM HOLE | |
|---|--------------|
| STATE PLANE COORDINATES (NAD 27 NORTH ZONE) | |
| N: | 347287.5417 |
| E: | 1865027.1574 |
| LAT: 39° 27' 08.084" | |
| LON: 79° 58' 40.750" | |
| STATE PLANE COORDINATES (NAD 83 NORTH ZONE-METER) | |
| N: | 105865.124 |
| E: | 558879.117 |
| UTM COORDINATES (NAD 83-METER) | |
| N: | 4367503.791 |
| E: | 587950.088 |
| LAT: 39° 27' 09.398" | |
| LON: 79° 58' 40.006" | |



91-01264H



RECEIVED
Office of Oil & Gas
NOV 15 2011

WV Department of
Environmental Protection

WELL RECLAMATION PLAN
PDC OES 1HM
GLADESVILLE 7.5 QUADRANGLE

2000' 0 2000' 4000'



LEGEND

| | |
|-----------------------|--|
| WELL= | |
| DRILL SITE= | |
| WELL SPOT= | |
| SPRING= | |
| BUILDING= | |
| COMPACTED FILL WALLS= | |
| PIT CUT WALLS= | |
| PIT WASTE= | |
| GRAVEL= | |
| SILT FENCE= | |
| PROPERTY LINE= | |
| EXISTING FENCE= | |
| PLANNED FENCE= | |
| ROAD= | |
| OPEN DITCH= | |
| STREAM LINE= | |
| CROSS DRAIN= | |
| FILTER STRIP= | |
| DIVERSION= | |

PHONE (304) 624-4108 **THRASHER ENGINEERING** (FAX) (304) 624-7831
CIVIL, ENVIRONMENTAL, AND CONSULTING
30 COLUMBIA BOULEVARD - CLARKSBURG, WV 26301

WELL RECLAMATION PLAN FOR PDC OES 1HM
SCALE: NOT TO SCALE
DRAWN: KJP
CHECKED:
APPROVED:
PROJECT# 030-2000

SHEET No. **6**