

91-01267

PDC MOUNTAINEER, LLC
WELL NO. OES 4HM

NOTES:
-PLAT ORIENTATION, CORNERS, AND WELL REFERENCES ARE BASED UPON THE GRID NORTH MERIDIAN FOR THE WY STATE PLANE COORDINATE SYSTEM, NORTH ZONE NAD 27. WELL LOCATION REFERENCE TIES ARE BASED UPON THE MAGNETIC MERIDIAN.

-THERE APPEARS TO BE NO WATER WELLS LOCATED WITHIN 1000' OF WELL OES 4HM.

JACOBS FAMILY TRUST
TM 26 PAR 12
DB 1033 PG 561
42.0 AC±

ROBERT W. & KIMBERLY J. BRYAN & SURV
TM 2 PAR 5
DB 260 PG 70
0.5 AC±

MARK D. & KAREN T. WOLF & SURV
TM 2 PAR 2.2
DB 270 PG 279
96.53 AC±

SAMMY R. & SARA LEE JACOBS FAMILY TRUST
TM 2 PAR 4
DB 305 PG 403
4 AC±

ANTHONY T. DORSEY & LAURA J. TOBIN & SURV.
TM 2 PAR 8.1
DB 291 PG 286
16.60 AC±

ALVIN L. & JUDY K. LIPSCOMB
TM 2 PAR 9
DB 270 PG 272
44.92 AC±

ALVIN L. & JUDY K. LIPSCOMB
TM 2 PAR 10
DB 270 PG 272
66 AC±

ALVIN L. & JUDY K. LIPSCOMB
TM 2 PAR 11
DB 270 PG 272
63 AC±

ALVIN L. & JUDY K. LIPSCOMB
TM 7 PAR 8
DB 270 PG 272
66 AC±

ALVIN L. & JUDY K. LIPSCOMB
TM 7 PAR 9
DB 266 PG 380
107.25 AC±

WESLEY H. & CAROLYN ANN HAMILTON & SURV
TM 7 PAR 12
DB 161 PG 196
55 AC±

VIRGINIA MORGAN BREWER
TM 6 PAR 1
DB 162 PG 385
87 AC±

VIRGINIA MORGAN BREWER
TM 6 PAR 46
DB 162 PG 385
85 AC±

WESLEY H. & CAROLYN ANN HAMILTON & SURV
TM 7 PAR 12
DB 161 PG 196
55 AC±

WESLEY H. & CAROLYN ANN HAMILTON & SURV
TM 7 PAR 12
DB 161 PG 196
55 AC±

WESLEY H. & CAROLYN ANN HAMILTON & SURV
TM 7 PAR 12
DB 161 PG 196
55 AC±

WESLEY H. & CAROLYN ANN HAMILTON & SURV
TM 7 PAR 12
DB 161 PG 196
55 AC±

WESLEY H. & CAROLYN ANN HAMILTON & SURV
TM 7 PAR 12
DB 161 PG 196
55 AC±

WESLEY H. & CAROLYN ANN HAMILTON & SURV
TM 7 PAR 12
DB 161 PG 196
55 AC±

WESLEY H. & CAROLYN ANN HAMILTON & SURV
TM 7 PAR 12
DB 161 PG 196
55 AC±

WESLEY H. & CAROLYN ANN HAMILTON & SURV
TM 7 PAR 12
DB 161 PG 196
55 AC±

WESLEY H. & CAROLYN ANN HAMILTON & SURV
TM 7 PAR 12
DB 161 PG 196
55 AC±

WESLEY H. & CAROLYN ANN HAMILTON & SURV
TM 7 PAR 12
DB 161 PG 196
55 AC±

ORTHODOX EDUCATIONAL SOCIETY
TM 27 PAR 2
DB 402 PG 440
502.5 AC±

CHARLES E. McDONALD
TM 2 PAR 6
DB 126 PG 10
18.5 AC±

BILLY D. & MILDRED J. CRANE & SURV
TM 2 PAR 7.4
DB 209 PG 523
1.49 AC±

CHARLES E. McDONALD
TM 2 PAR 11
DB 135 PG 452
35 AC±

ALVIN L. & JUDY K. LIPSCOMB
TM 2 PAR 10
DB 270 PG 272
63 AC±

ALVIN L. & JUDY K. LIPSCOMB
TM 2 PAR 11
DB 270 PG 272
63 AC±

ALVIN L. & JUDY K. LIPSCOMB
TM 2 PAR 10
DB 270 PG 272
63 AC±

ALVIN L. & JUDY K. LIPSCOMB
TM 2 PAR 11
DB 270 PG 272
63 AC±

ALVIN L. & JUDY K. LIPSCOMB
TM 2 PAR 10
DB 270 PG 272
63 AC±

ALVIN L. & JUDY K. LIPSCOMB
TM 2 PAR 11
DB 270 PG 272
63 AC±

ALVIN L. & JUDY K. LIPSCOMB
TM 2 PAR 10
DB 270 PG 272
63 AC±

ALVIN L. & JUDY K. LIPSCOMB
TM 2 PAR 11
DB 270 PG 272
63 AC±

ALVIN L. & JUDY K. LIPSCOMB
TM 2 PAR 10
DB 270 PG 272
63 AC±

ALVIN L. & JUDY K. LIPSCOMB
TM 2 PAR 11
DB 270 PG 272
63 AC±

ALVIN L. & JUDY K. LIPSCOMB
TM 2 PAR 10
DB 270 PG 272
63 AC±

ALVIN L. & JUDY K. LIPSCOMB
TM 2 PAR 11
DB 270 PG 272
63 AC±

ALVIN L. & JUDY K. LIPSCOMB
TM 2 PAR 10
DB 270 PG 272
63 AC±

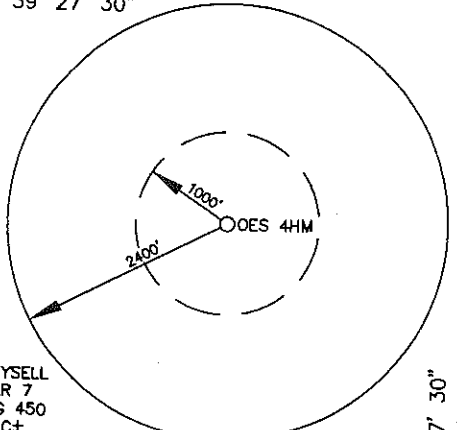
ALVIN L. & JUDY K. LIPSCOMB
TM 2 PAR 11
DB 270 PG 272
63 AC±

ALVIN L. & JUDY K. LIPSCOMB
TM 2 PAR 10
DB 270 PG 272
63 AC±

ALVIN L. & JUDY K. LIPSCOMB
TM 2 PAR 11
DB 270 PG 272
63 AC±

2,808' TOP HOLE | 978' BOTTOM HOLE

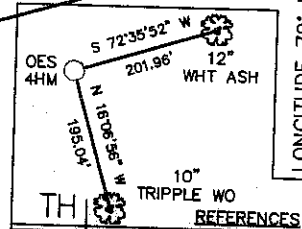
LATITUDE 39° 27' 30"



LONGITUDE 79° 57' 30"

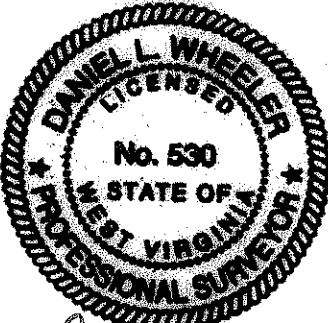
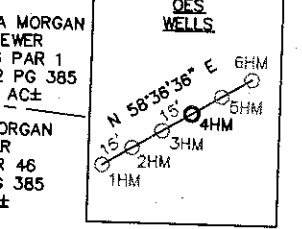
13,693' BOTTOM HOLE

8,014' TOP HOLE



WELL NO. OES 4HM TOP HOLE
STATE PLANE COORDINATES
(NAD 27 NORTH ZONE)
N: 341379.5550
E: 1867726.5010
LAT: 39° 26' 10.831"
LON: 79° 58' 05.945"
STATE PLANE COORDINATES
(NAD 83 NORTH ZONE-METER)
N: 104064.427
E: 559701.851
UTM COORDINATES
(NAD 83-METER)
N: 4365717.480
E: 588802.483
LAT: 39° 26' 11.148"
LON: 79° 58' 05.200"

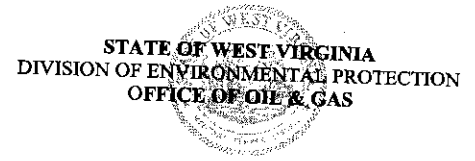
WELL NO. OES 4HM BOTTOM HOLE
STATE PLANE COORDINATES
(NAD 27 NORTH ZONE)
N: 335692.2349
E: 1869530.7245
LAT: 39° 25' 14.710"
LON: 79° 57' 42.576"
STATE PLANE COORDINATES
(NAD 83 NORTH ZONE-METER)
N: 102330.986
E: 560251.746
UTM COORDINATES
(NAD 83-METER)
N: 4363993.874
E: 589381.017
LAT: 39° 25' 15.030"
LON: 79° 57' 41.833"



Daniel L. Wheeler
Daniel L. Wheeler, P.S. 530

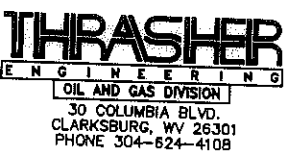
I, THE UNDERSIGNED, HEREBY CERTIFY THAT THIS PLAT IS CORRECT TO THE BEST OF MY KNOWLEDGE AND BELIEF AND SHOWS ALL THE INFORMATION REQUIRED BY LAW AND THE REGULATIONS ISSUED AND PRESCRIBED BY THE DIVISION OF ENVIRONMENTAL PROTECTION.

FILE NO. 030-2000
SCALE: 1"=1000'
MINIMUM DEGREE OF ACCURACY: 1 in 2500
PROVEN SOURCE OF ELEVATION: OPUS SURVEY GRADE GPS



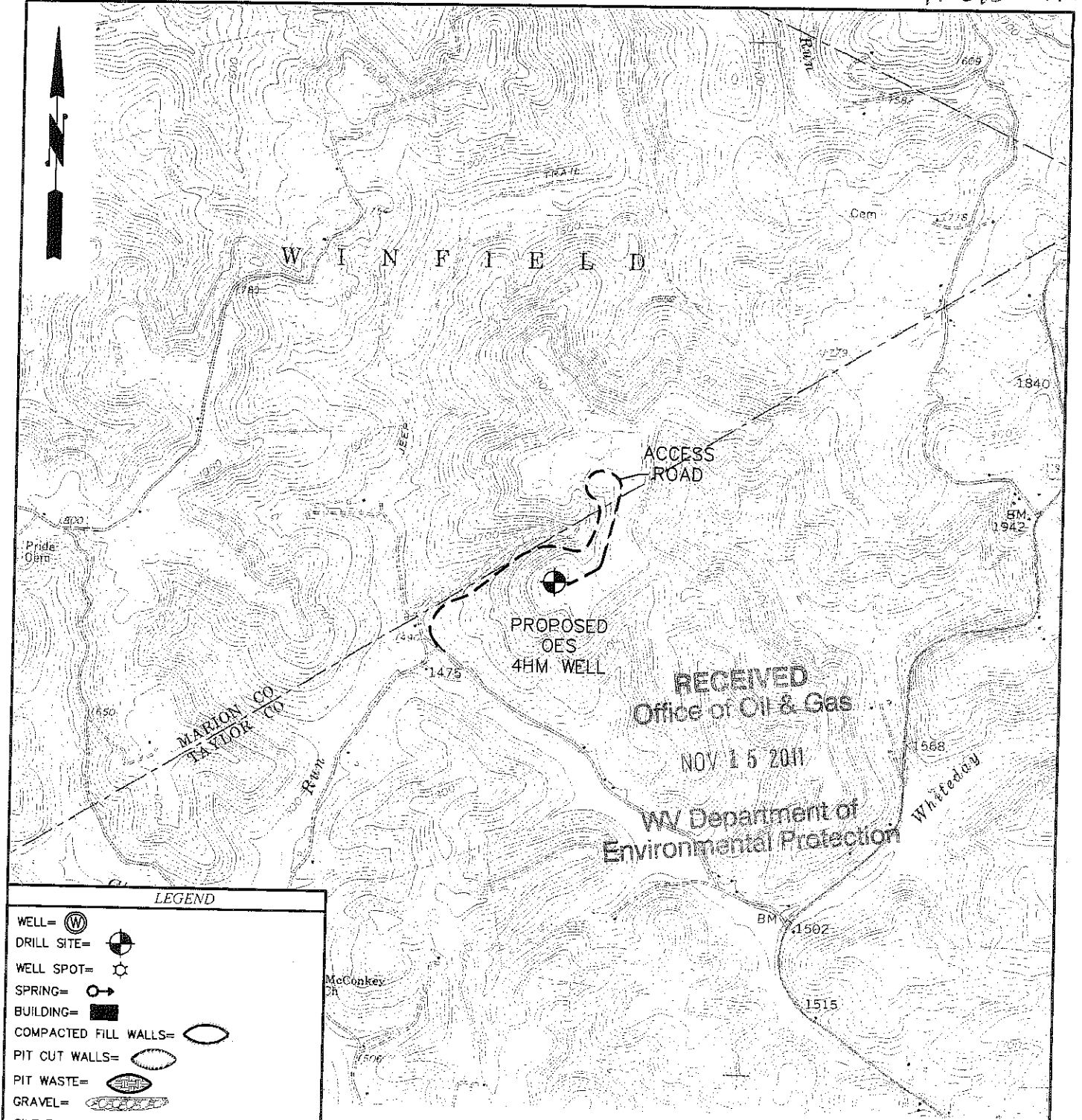
DATE OCTOBER 12, 2011
OPERATOR'S WELL NO. OES NO. 4HM
API WELL NO.
47 - 091 - 01267H
STATE COUNTY PERMIT

WELL TYPE: OIL GAS LIQUID INJECTION WASTE DISPOSAL (IF "GAS"), PRODUCTION STORAGE DEEP SHALLOW
LOCATION: ELEVATION: 1945.5' WATER SHED: WHITE DAY CREEK
DISTRICT: FETTERMAN COUNTY: TAYLOR
QUADRANGLE: GLADESVILLE 7.5' ACREAGE: 502.5 AC±
SURFACE OWNER: ORTHODOX EDUCATIONAL SOCIETY LEASE ACREAGE: 820.71 AC ±
OIL & GAS ROYALTY OWNER: ORTHODOX EDUCATIONAL SOCIETY, ET. AL. LEASE NO.
PROPOSED WORK: DRILL CONVERT DRILL DEEPER REDRILL FRACTURE OR STIMULATE
PERFORATE NEW FORMATION PLUG OFF OLD FORMATION OTHER PHYSICAL CHANGE IN WELL (SPECIFY)



PLUG AND ABANDON CLEAN OUT AND REPLUG
TARGET FORMATION: MARCELLUS SHALE ESTIMATED DEPTH: 7,965' TVD / 14,300' MD
WELL OPERATOR: PDC MOUNTAINEER, LLC DESIGNATED AGENT: JAMES A HAGA
ADDRESS: 120 GENESIS BOULEVARD ADDRESS: 120 GENESIS BOULEVARD
BRIDGEPORT, WV 26330 BRIDGEPORT, WV 26330

91-01267H



LEGEND

- WELL =
- DRILL SITE =
- WELL SPOT =
- SPRING =
- BUILDING =
- COMPACTED FILL WALLS =
- PIT CUT WALLS =
- PIT WASTE =
- GRAVEL =
- SILT FENCE =
- PROPERTY LINE =
- EXISTING FENCE =
- PLANNED FENCE =
- ROAD =
- OPEN DITCH =
- STREAM LINE =
- CROSS DRAIN =
- FILTER STRIP =
- DIVERSION =

WELL RECLAMATION PLAN
PDC OES 4HM
GLADESVILLE 7.5 QUADRANGLE



PHONE (304) 624-4108 THRASHER ENGINEERING CIVIL, ENVIRONMENTAL, AND CONSULTING 30 COLUMBIA BOULEVARD - CLARKSBURG, WV 26301	(FAX) (304) 624-7831	WELL RECLAMATION PLAN FOR PDC OES 4HM	SCALE: NOT TO SCALE DRAWN: KJP CHECKED: APPROVED:	SHEET No. 6
		PROJECT# 030-2000		