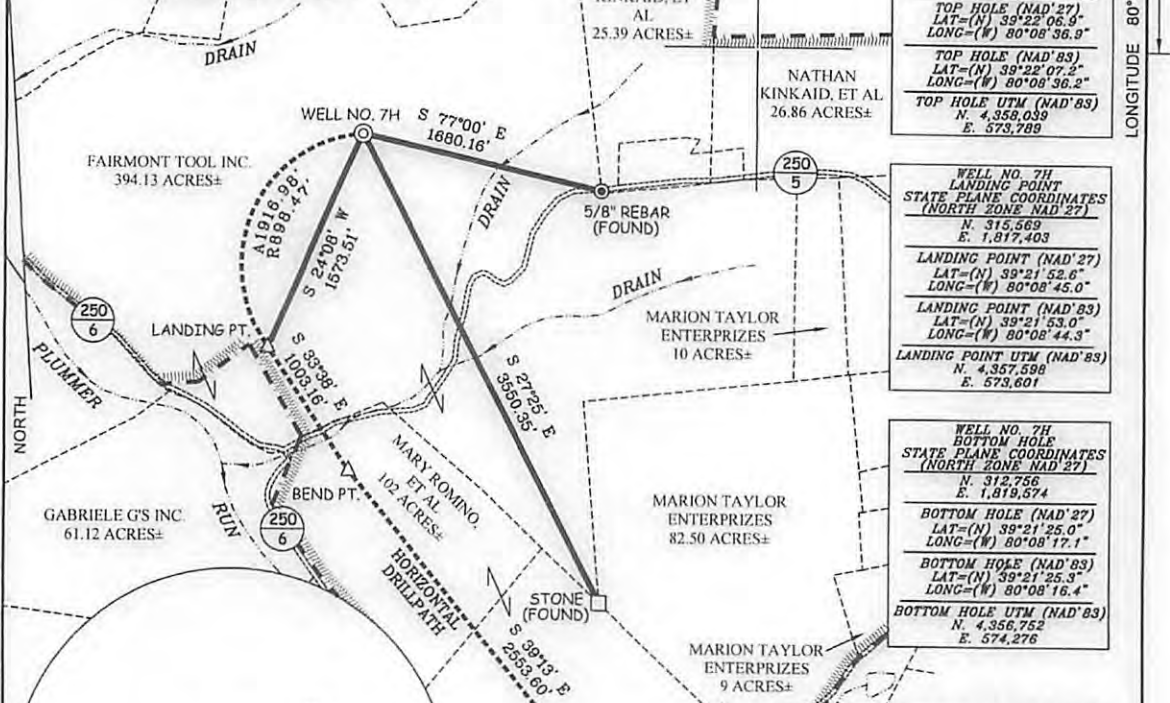
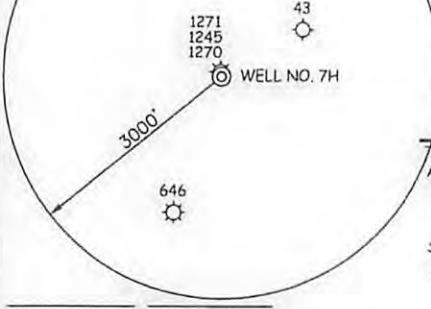


FAIRMONT TOOL INC. LEASE WELL NO. 7H

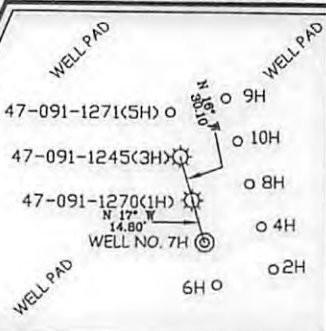


WELL NO. 7H TOP HOLE STATE PLANE COORDINATES (NORTH ZONE NAD 27) N. 317,005 E. 1,818,047 TOP HOLE (NAD'27) LAT=(N) 39°22'06.9" LONG=(W) 80°08'36.9" TOP HOLE (NAD'83) LAT=(N) 39°22'07.2" LONG=(W) 80°08'36.2" TOP HOLE UTM (NAD'83) N. 4,353,039 E. 573,789
WELL NO. 7H LANDING POINT STATE PLANE COORDINATES (NORTH ZONE NAD 27) N. 315,569 E. 1,817,403 LANDING POINT (NAD'27) LAT=(N) 39°21'52.6" LONG=(W) 80°08'45.0" LANDING POINT (NAD'83) LAT=(N) 39°21'53.0" LONG=(W) 80°08'44.3" LANDING POINT UTM (NAD'83) N. 4,357,598 E. 573,601
WELL NO. 7H BOTTOM HOLE STATE PLANE COORDINATES (NORTH ZONE NAD 27) N. 312,756 E. 1,819,574 BOTTOM HOLE (NAD'27) LAT=(N) 39°21'25.0" LONG=(W) 80°08'17.1" BOTTOM HOLE (NAD'83) LAT=(N) 39°21'25.3" LONG=(W) 80°08'16.4" BOTTOM HOLE UTM (NAD'83) N. 4,356,752 E. 574,276



- NOTES ON SURVEY**
1. TIES TO WELLS, REFERENCES, AND CORNERS ARE BASED ON GRID NORTH FOR THE WV STATE PLANE COORDINATE SYSTEM NORTH ZONE NAD '27.
 2. LEASE BOUNDARY SHOWN HEREON TAKEN FROM DEED BOOK 276 PAGE 193 AND ADJOINING DEEDS.
 3. SURFACE OWNER AND ADJOINER INFORMATION TAKEN FROM THE ASSESSOR AND COUNTY CLERK RECORDS OF TAYLOR COUNTY IN JULY, 2011.
 4. WELL COORDINATES ESTABLISHED BY DGPS (SURVEY GRADE).
 5. PROPOSED FAIRMONT TOOL INC. #3H WELL IS 400' FROM ALL LEASE AND UNIT BOUNDARIES.

REFERENCES



I THE UNDERSIGNED, HEREBY CERTIFY THAT THIS PLAT IS CORRECT TO THE BEST OF MY KNOWLEDGE AND BELIEF AND SHOWS ALL THE INFORMATION REQUIRED BY LAW AND THE REGULATIONS ISSUED AND PRESCRIBED BY THE DIVISION OF ENVIRONMENTAL PROTECTION.

P.S. 677 *Gregory A. Smith*



(+) DENOTES LOCATION OF WELL ON UNITED STATES TOPOGRAPHIC MAPS.
 DATE FEBRUARY 1, 20 13
 OPERATORS WELL NO. FAIRMONT TOOL INC. #7H
 API WELL NO. 47 - 91 - 01283 H6A
 STATE COUNTY PERMIT

MINIMUM DEGREE OF ACCURACY 1 / 200 FILE NO. 7590P7H (348-28)
 PROVEN SOURCE OF ELEVATION DGPS (SURVEY GRADE) SCALE 1" = 1,000'

STATE OF WEST VIRGINIA
 DIVISION OF ENVIRONMENTAL PROTECTION
 OFFICE OF OIL AND GAS

WELL TYPE: OIL GAS LIQUID INJECTION WASTE DISPOSAL IF "GAS" PRODUCTION STORAGE DEEP SHALLOW

LOCATION: ELEVATION 1,379' WATERSHED PLUMMER RUN DISTRICT BOOTH'S CREEK COUNTY TAYLOR QUADRANGLE ROSEMONT 7.5'

SURFACE OWNER FAIRMONT TOOL INC. ACREAGE 394.13± ROYALTY OWNER NATHAN KINKAID ET AL. LEASE ACREAGE 394.13± & 102±

PROPOSED WORK: DRILL CONVERT DRILL DEEPER REDRILL FRACTURE OR STIMULATE PLUG OFF OLD FORMATION PERFORATE NEW FORMATION PLUG AND ABANDON CLEAN OUT AND REPLUG OTHER

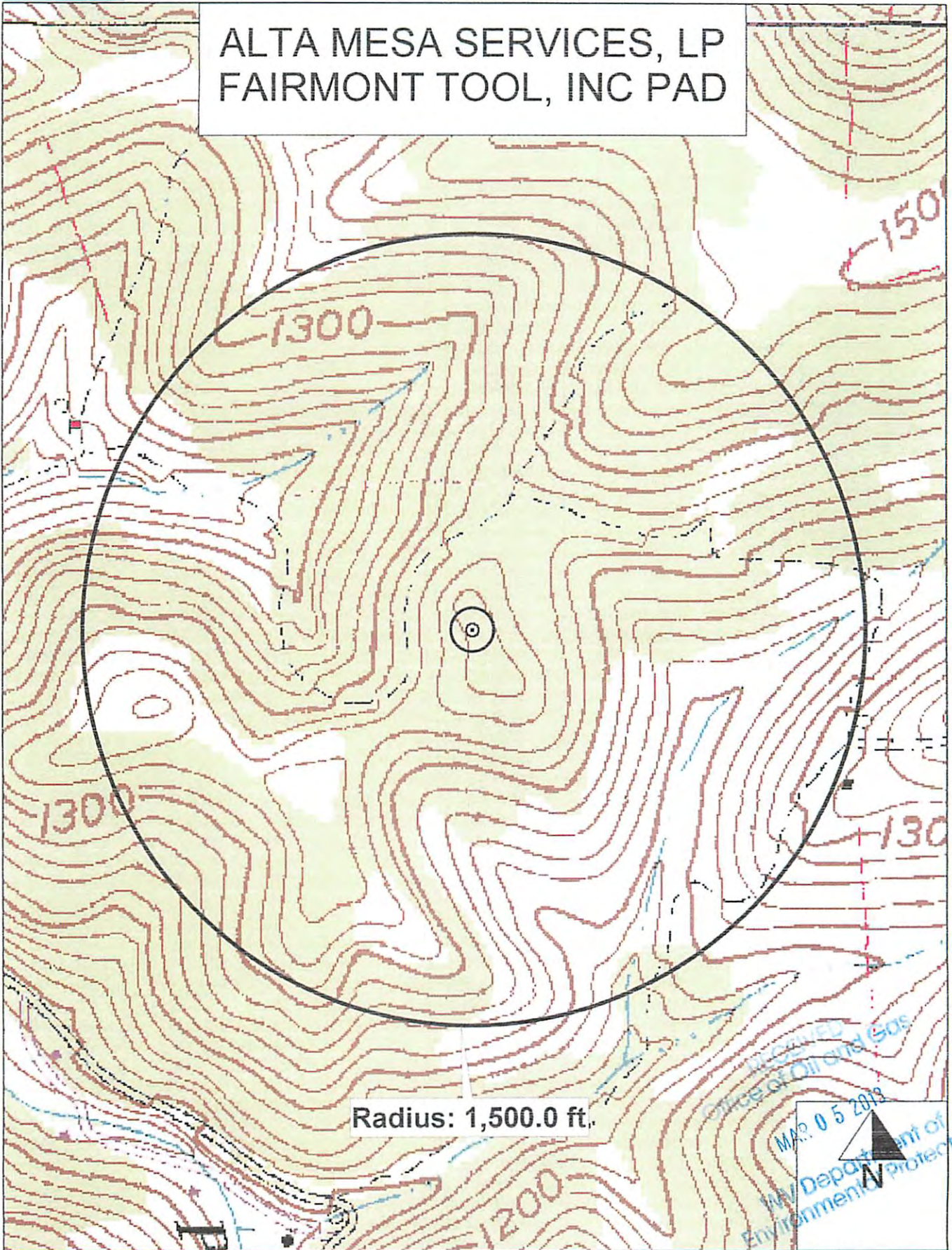
PHYSICAL CHANGE IN WELL (SPECIFY) TARGET FORMATION MARCELLUS ESTIMATED DEPTH 7,278' TVD / 12,075' TMD

WELL OPERATOR ALTA MESA SERVICES, LP DESIGNATED AGENT KERIMA HADDAD
 ADDRESS 15021 KATY FREEWAY SUITE 400 HOUSTON, TX 77094 ADDRESS 888 OAKWOOD RD. SUITE 220 CHARLESTON, WV 25314

05/31/2013

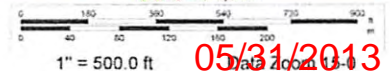
91-01283

ALTA MESA SERVICES, LP FAIRMONT TOOL, INC PAD



Radius: 1,500.0 ft.

Scale 1 : 6,000



RECEIVED
Office of Oil and Gas
MAR 05 2013
NY Department of
Environmental Protection

Data use subject to license.

© DeLorme. XMap® 6.

www.delorme.com

05/31/2013