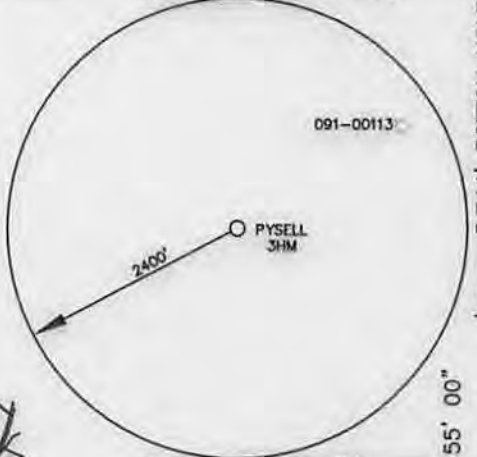


PDC MOUNTAINEER, LLC
WELL PYSSELL NO. 3HM

WELL NO. 3HM
TOP HOLE
STATE PLANE COORDINATES
(NORTH ZONE-NAD 83)
N:340088.6
E:1839449.6
GEO: LAT:39°25'58.2"
LON:79°57'24.8"
UTM COORDINATES-ZONE17
(NAD 83-METER)
N:4365328.5
E:589772.4



WELL NO. 3HM
LAUNCH POINT
STATE PLANE COORDINATES
(NORTH ZONE-NAD 83)
N:340563.1
E:1840955.4
GEO: LAT:39°26'02.9"
LON:79°57'05.7"
UTM COORDINATES-ZONE17
(NAD 83-METER)
N:4365480.8
E:590228.5

WELL NO. 3HM
BOTTOM HOLE
STATE PLANE COORDINATES
(NORTH ZONE-NAD 83)
N:345671.9
E:1839295.5
GEO: LAT:39°26'53.3"
LON:79°57'27.1"
UTM COORDINATES-ZONE17
(NAD 83-METER)
N:4367029.0
E:589696.8

NOTES:
-PLAT BEARINGS AND DISTANCES ARE BASED ON NAD2011 (CORDS) WV STATE PLANES NORTH. GRID NORTH ELEVATIONS BASED ON GEOID2012A US SURVEY FEET UNLESS SHOWN OTHERWISE.
-THERE ARE NO (O) WATER WELL(S) LOCATED WITHIN 250' OF WELL 3HM.
-THERE ARE NO (O) DWELLINGS OR AGRICULTURAL STRUCTURES WITHIN 625' OF WELL 3HM.

MONUMENT FOUND IRON REBAR UNLESS NOTED OTHERWISE.

UT- UNNAMED TRIBUTARY

MUSGROVE TM 28 PAR 1 40 AC±

JACOBS TM 28 PAR 8.3 35.10 AC±

STEVENS TM 28 PAR 8.4 35.51 AC±

FRUITRIDGE, LLC TM 28 PAR 9 59.5 AC±

MORAN TM 28 PAR 3.1 143 AC±

STREET TM 27 PAR 10 100 AC±

FLANNAGAN TM 27 PAR 8 103 AC±

BJORKMAN TM 27 PAR 7 51 AC±

BJORKMAN TM 27 PAR 8.1 40 AC±

HORNBECK TM 27 PAR 4 152 AC±

HORNBECK TM 27 PAR 4 152 AC±

HORNBECK TM 27 PAR 4 152 AC±

MacDONALD TM 3 PAR 20 37 AC±

MacDONALD TM 3 PAR 19 24.5 AC±

MacDONALD TM 3 PAR 16 222.75 AC±

MacDONALD TM 3 PAR 19.1 20.263 AC±

PARK TM 3 PAR 21 35.68 AC±

LAUNCH POINT PATSCHKE TM 3 PAR 23.2 27.71 AC±

COMPTON TM 3 PAR 23.1 1 AC±

HAMILTON TM 2 PAR 12 18.62 AC±

WV L00775

WV L00633

WV L00775

WV L00634

WV L00519

WV L00665

WV L00747

WV L00823

WV L00828

WV L00827

WV L00827

WV L00827

WV L00827

WV L00827

WV L00827

WV L00827

WV L00827

WV L00827

WV L00827

WV L00827

WV L00827

WV L00827

WV L00827

WV L00827

WV L00827

WV L00827

WV L00827

WV L00827

WV L00827

WV L00827

WV L00827

WV L00827

WV L00827

WV L00827

WV L00827

WV L00827

WV L00827

WV L00827

WV L00827

WV L00827

WV L00827

WV L00827

WV L00827

WV L00827

WV L00827

WV L00827

WV L00827

WV L00827

WV L00827

WV L00827

WV L00827

WV L00827

WV L00827

WV L00827

WV L00827

WV L00827

WV L00827

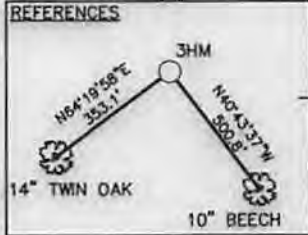
WV L00827

WV L00827

WV L00827

WV L00827

WV L00827



TH BH DENOTES LOCATION OF WELL ON UNITED STATES TOPOGRAPHIC MAP

LEASE BOUNDARY

500' BUFFER



Michael S. Wolf, P.S. 2270

I THE UNDERSIGNED, HEREBY CERTIFY THAT THIS PLAT IS CORRECT TO THE BEST OF MY KNOWLEDGE AND BELIEF AND SHOWS ALL THE INFORMATION REQUIRED BY LAW AND THE RULES ISSUED AND PRESCRIBED BY THE DEPARTMENT OF ENVIRONMENTAL PROTECTION.

FILE NO. 030-2435
SCALE: 1"=2000'
MINIMUM DEGREE OF ACCURACY: 1 in 2500
PROVEN SOURCE OF ELEVATION: SURVEY GRADE GPS

STATE OF WEST VIRGINIA
DIVISION OF ENVIRONMENTAL PROTECTION
OFFICE OF OIL & GAS

DATE JUNE 5, 2014
OPERATOR'S WELL NO. PYSSELL NO. 3HM
API WELL NO. 47 - 091 - 01305 H/A
STATE COUNTY PERMIT

WELL TYPE: OIL GAS LIQUID INJECTION WASTE DISPOSAL (IF "GAS"), PRODUCTION STORAGE DEEP SHALLOW

LOCATION: ELEVATION: 1886.25 WATER SHED: WHITE DAY CREEK

DISTRICT: FETTERMAN COUNTY: TAYLOR

QUADRANGLE: GLADESVILLE 7.5' ACREAGE: 300 AC±

SURFACE OWNER: RUTH E. HAUGHT LEASE ACREAGE: 1429.64 AC±

OIL & GAS ROYALTY OWNER: ORTHODOX EDUCATIONAL SOCIETY/UNION NATIONAL BANK, TRUSTEE TRUMAN GORE & C. BURKE MORRIS/CHARLES & LEVERNE MACDONALD, ET AL/CARA MICHELLE DAVIDSON, ET AL
LEASE NO. WV L00775/WV L00519/WV L00634/WV L02896

PROPOSED WORK: DRILL CONVERT DRILL DEEPER REDRILL FRACTURE OR STIMULATE
PERFORATE NEW FORMATION PLUG OFF OLD FORMATION OTHER PHYSICAL CHANGE IN WELL (SPECIFY)

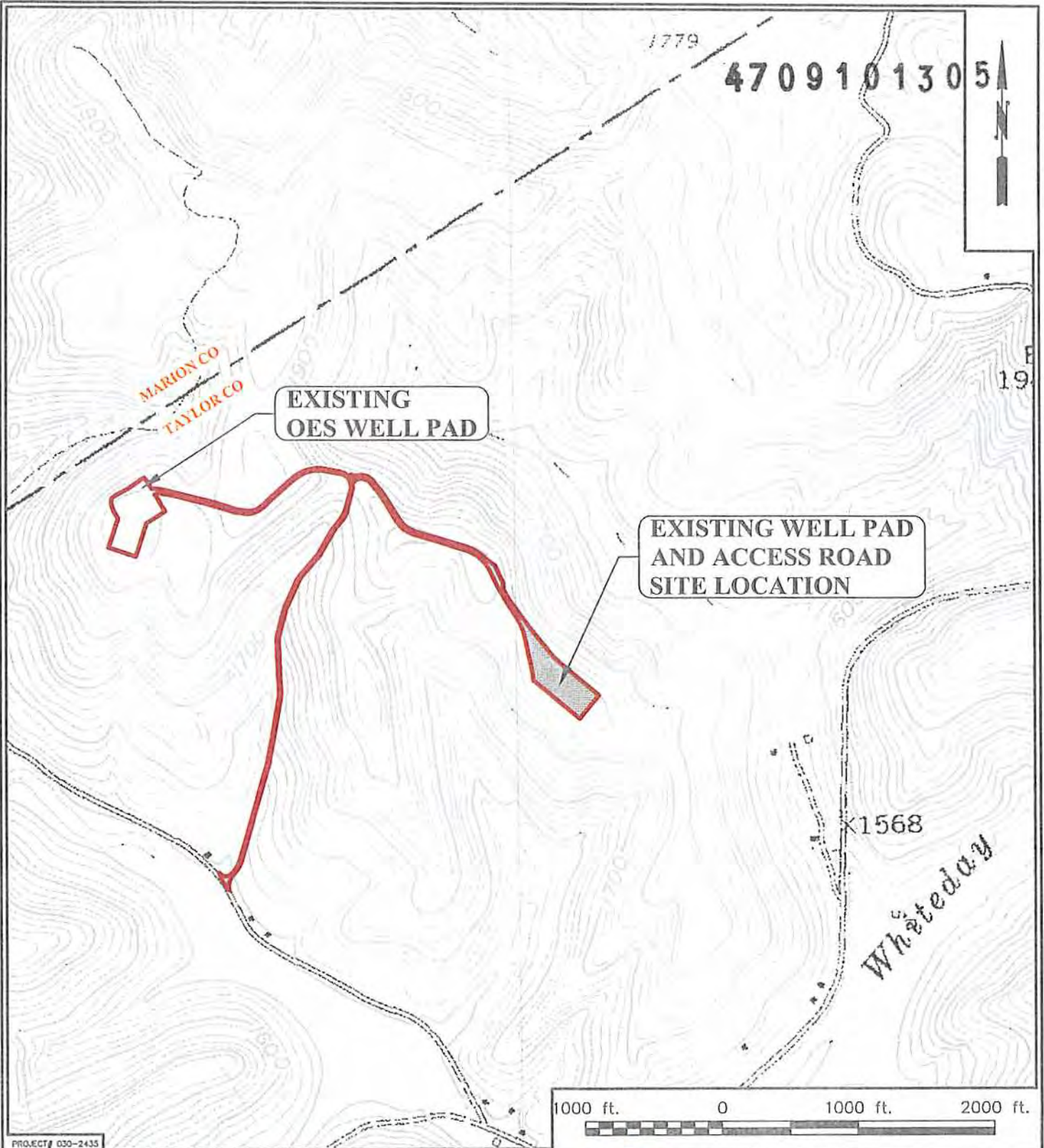
PLUG AND ABANDON CLEAN OUT AND REPLUG
TARGET FORMATION: MARCELLUS SHALE ESTIMATED DEPTH: 7,882' TVD / 14,176' MD

WELL OPERATOR: PDC MOUNTAINEER, LLC. DESIGNATED AGENT: STEVEN P. JOHNSON
ADDRESS: 120 GENESIS BOULEVARD ADDRESS: 120 GENESIS BOULEVARD
BRIDGEPORT, WV 26330 BRIDGEPORT, WV 26330



09/19/2014

USER: kpoth LAYOUT: 3HM PLOT DATE/TIME: 6/5/2014 - 1:34pm CAD FILE: R:\030-2435 PDC Pysell Pod\Survey\Pysell PLATS REVISED 5-30-14.dwg



PLOT DATE/TIME: 4/10/2014 2:25 PM

CAO FILE R:\030-2435 PDC Pysell Pad\Drawing\N-2435-Topo-Statop.dwg

PROJECT# 030-2435

THRASHER

THE THRASHER GROUP INC.

CIVIL • ENVIRONMENTAL • CONSULTING • FIELD SERVICES
600 WHITE OAKS BOULEVARD, BRIDGEPORT, WV 26330
PHONE (304) 624-4108 • FAX (304) 624-7831



PDC MOUNTAINEER, LLC

PDC MOUNTAINEER

PYSELL WELL PAD
SITE TOPOGRAPHIC LOCATION MAP

SHEET No.

1

THE INFORMATION CONTAINED HEREIN IS THE SOLE PROPERTY OF THRASHER ENGINEERING INC. REPRODUCTION OF THESE DOCUMENTS IN WHOLE OR IN PART, FOR ANY REASON WITHOUT PRIOR WRITTEN PERMISSION, IS STRICTLY PROHIBITED. COPYRIGHT © 2014 THRASHER ENGINEERING INC.

04/10/2014

FETTERMEN DISTRICT, TAYLOR CO, WV