

EQT PRODUCTION COMPANY WELL NO. WV 515826- STEPHEN SANDOR, JR., ET AL LEASE

LONGITUDE: 80°07'30"

| CURVE TABLE | | | |
|-------------|--------|------------|-------------|
| TAG | RADIUS | ARC LENGTH | DELTA ANGLE |
| C1 | 250' | 662.81' | 151°54'21" |

- NOTES ON SURVEY**
- NO WATER WELLS OR DEVELOPED SPRINGS USED FOR HUMAN OR DOMESTIC ANIMAL CONSUMPTION WERE FOUND WITHIN 250' OF THE WELL PAD.
 - SURFACE OWNERSHIP TAKEN FROM THE TAYLOR COUNTY TAX ASSESSOR AND COUNTY CLERK OFFICES IN OCTOBER, 2014.
 - WELL LATITUDE AND LONGITUDE FROM SURVEY GRADE OPUS SOLUTION DERIVED ON JANUARY 22, 2015.
 - TIES TO CORNERS AND REFERENCES BASED ON WV STATE PLANE COORDINATE SYSTEM, NAD '83 NORTH ZONE UNLESS OTHERWISE NOTED.
 - LEASE INFORMATION PROVIDED BY EQT PRODUCTION COMPANY.

**EQT PRODUCTION COMPANY
WELL NO. WV 515826
STEPHEN SANDOR, JR., ET AL LEASE
50.79 ACRES ±**

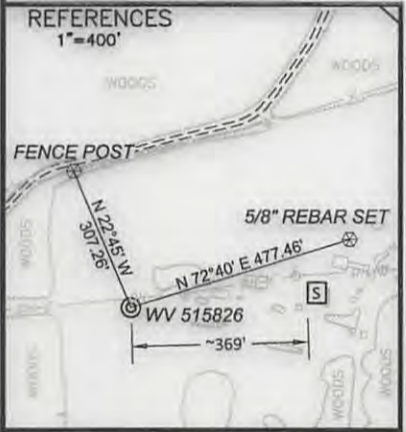
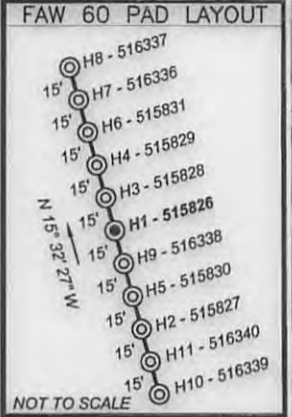
SURFACE HOLE
NAD '27 NORTH S.P.C.: N. 321241.01 E. 1812618.07
NAD '27 NORTH GEO. COORDINATES: LAT. 39.380059 LON. -80.162899
NAD '83 UTM 17N.: N. 4359302.02 E. 572113.96

LANDING POINT
NAD '27 NORTH S.P.C.: N. 321073.05 E. 1812107.37
NAD '27 NORTH GEO. COORDINATES: LAT. 39.379627 LON. -80.164701
NAD '83 UTM 17N.: N. 4359248.26 E. 571959.21

BOTTOM HOLE
NAD '27 NORTH S.P.C.: N. 316530.06 E. 1813671.56
NAD '27 NORTH GEO. COORDINATES: LAT. 39.367186 LON. -80.159050
NAD '83 UTM 17N.: N. 4357872.10 E. 572458.80

| EQT PRODUCTION COMPANY WELL NO. WV 515826 | | |
|--|------------------------|-----------|
| LEASE NO. | LESSOR | LEASE AC. |
| 965690 (A) | MARGARET ANN GREEN | 50.68 |
| 965697 | LYLE G. MOORE | 71.64 |
| 1009271 | THOMAS E. PROUD, ET UX | 84 |

(+) DENOTES LOCATION OF WELL ON UNITED STATES TOPOGRAPHIC MAPS



600 Marketplace Suite 200, Bridgeport, WV 26330
Toll Free 855-488-9539
Fax 304-933-3327



Civil & Environmental Consultants, Inc.

DATE AUGUST 21, 2015

SCALE 1" = 1000' ACCURACY 1:200

OPERATORS
WELL No. WV 515826

47 - 091 - 01323 HGA
API No.

TYPE OF WELL:

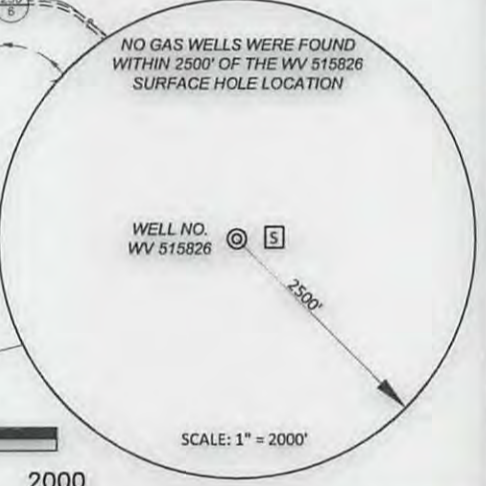
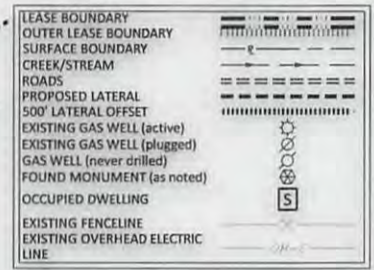
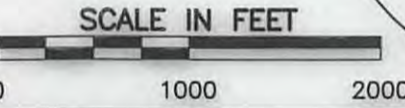
GAS:
Production Storage *Deep *Shallow

PROPOSED WORK ON LOCATION:
Drill Drill Deeper Redrill Convert
Fracture/ Stimulate *Plug off to Formation
Perforate New Formation Plug and Abandon
Clean/ Replug Other Than Above
If "Other" Please see Details below—
DETAILS OF PROPOSED WORK _____

*TARGET FORMATION MARCELLUS
ESTIMATED DEPTH TVD: 7,184'

WELL OPERATOR EQT PRODUCTION COMPANY
ADDRESS 115 PROFESSIONAL PLACE P.O. BOX 280
BRIDGEPORT, WV 26330

| ID | BEARING | DISTANCE |
|----|------------|----------|
| L1 | N 85°42' W | 882.02' |
| L2 | N 53°46' E | 836.03' |
| L3 | N 47°08' W | 142.32' |
| L4 | S 19°00' E | 4804.62' |
| L5 | N 74°36' E | 1611.71' |
| L6 | S 19°24' W | 568.78' |
| L7 | N 26°46' W | 1309.28' |



I, the undersigned, hereby certify that this plat is correct to the best of my knowledge and belief and shows all the information required by law and the rules issued and prescribed by the Division of Environmental Protection.

STATE OF WEST VIRGINIA
DIVISION OF ENVIRONMENTAL PROTECTION
OFFICE OF OIL AND GAS



WELL AREA & LOCATION INFORMATION:

ELEVATION SOURCE DGPS (OPUS)
ELEVATION 1323.1' (GROUND), 1316.1' (PROPOSED)

WATERSHED UNNAMED TRIBUTARY OF HUSTEAD FORK DISTRICT 12/04/2015

COUNTY TAYLOR TOPO QUAD FAIRMONT WES.

SURFACE OWNER MICHAEL G. MORRIS
ACREAGE 47.59 ±

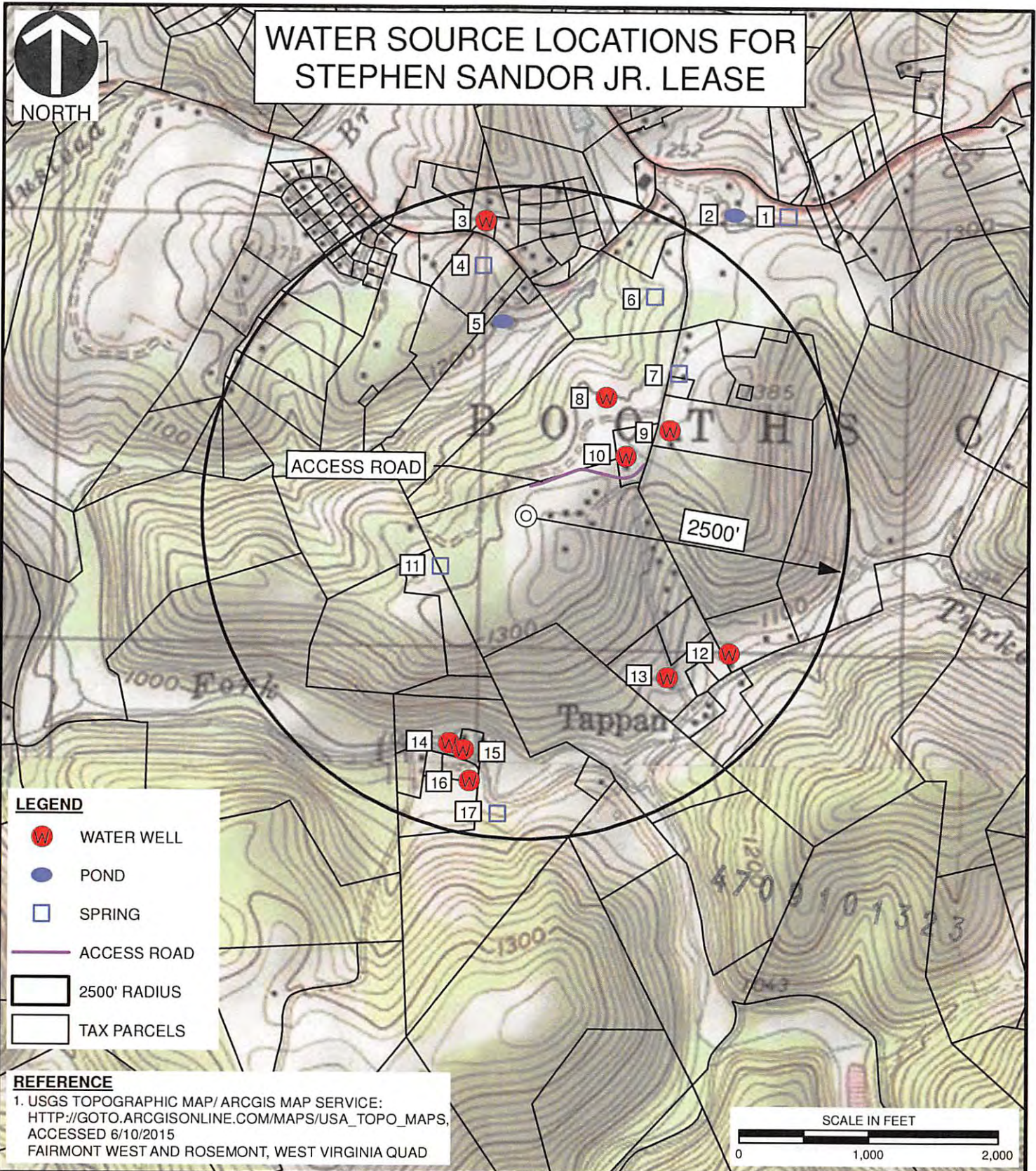
ROYALTY OWNER STEPHEN SANDOR, JR., ET AL LEASE NO. 965747
LEASE ACREAGE 50.79 ±

DESIGNATED AGENT REX C. RAY
ADDRESS 115 PROFESSIONAL PLACE P.O. BOX 280
BRIDGEPORT, WV 26330

13,287' SURVEYED LATITUDE 39°22'48.67"



WATER SOURCE LOCATIONS FOR STEPHEN SANDOR JR. LEASE



LEGEND

- WATER WELL
- POND
- SPRING
- ACCESS ROAD
- 2500' RADIUS
- TAX PARCELS

REFERENCE

1. USGS TOPOGRAPHIC MAP/ ARCGIS MAP SERVICE:
[HTTP://GOTO.ARCGISONLINE.COM/MAPS/USA_TOPO_MAPS](http://gto.arcgis.com/maps/usa_topo_maps),
 ACCESSED 6/10/2015
 FAIRMONT WEST AND ROSEMONT, WEST VIRGINIA QUAD

I:\Srv-bridgeport\IP:120.141.43.524-GIS\Maps\Task_0021143524_0021_WATER_SOURCES_TOPO.mxd 6/10/2015 7:45 AM (easpril)



Civil & Environmental Consultants, Inc.

99 Cambridge Place - Bridgeport, WV 26330-2820
 Ph: 304-933-3119 · Toll: 855-488-9539 · Fax: 304-933-3327
www.cecinc.com

Energy Production Company
 Office of Operations
 FAW 60 WELL PAD
 TAYLOR COUNTY, WEST VIRGINIA
 AUG 26 2015

WATER SOURCES FOR FAW 60

| | | | | | | | |
|-----------|------------|-------------|-------------|--------------|--------------|------------|------------|
| DRAWN BY: | ECA | CHECKED BY: | JDR | APPROVED BY: | DEM | FIGURE NO: | WT |
| DATE: | 06/10/2015 | SCALE: | 1" = 1,000' | PROJECT NO: | 143-524.0021 | | 12/04/2015 |