

EQT PRODUCTION COMPANY WELL NO. WV 515830- STEPHEN SANDOR, JR., ET AL LEASE

NOTES ON SURVEY

- NO WATER WELLS OR DEVELOPED SPRINGS USED FOR HUMAN OR DOMESTIC ANIMAL CONSUMPTION WERE FOUND WITHIN 250' OF THE WELL PAD.
- SURFACE OWNERSHIP TAKEN FROM THE TAYLOR COUNTY TAX ASSESSOR AND COUNTY CLERK OFFICES IN OCTOBER, 2014.
- WELL LATITUDE AND LONGITUDE FROM SURVEY GRADE OPUS SOLUTION DERIVED ON JANUARY 22, 2015.
- TIES TO CORNERS AND REFERENCES BASED ON WV STATE PLANE COORDINATE SYSTEM, NAD '83 NORTH ZONE UNLESS OTHERWISE NOTED.
- LEASE INFORMATION PROVIDED BY EQT PRODUCTION COMPANY.

CURVE TABLE			
TAG	RADIUS	ARC LENGTH	DELTA ANGLE
C1	300'	743.64'	141°50'19"

**EQT PRODUCTION COMPANY
WELL NO. WV 515830
STEPHEN SANDOR, JR., ET AL LEASE
50.79 ACRES ±**

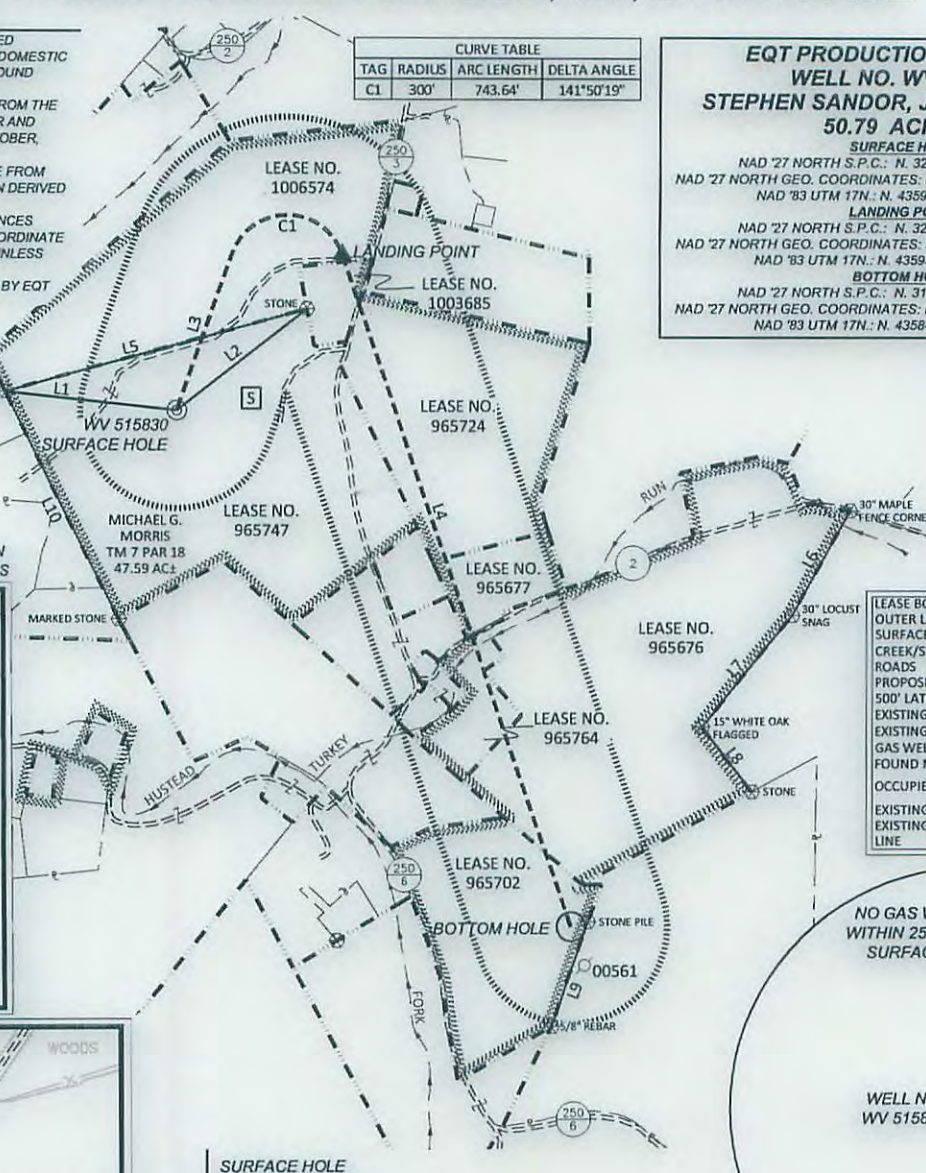
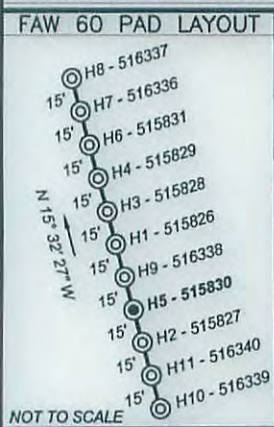
SURFACE HOLE
NAD '27 NORTH S.P.C.: N. 3221212.11 E. 1812626.11
NAD '27 NORTH GEO. COORDINATES: LAT. 39.380019 LON. -80.162870
NAD '83 UTM 17N.: N. 4359293.26 E. 572116.55

LANDING POINT
NAD '27 NORTH S.P.C.: N. 322017.83 E. 1813474.11
NAD '27 NORTH GEO. COORDINATES: LAT. 39.382249 LON. -80.159891
NAD '83 UTM 17N.: N. 4359543.04 E. 572370.84

BOTTOM HOLE
NAD '27 NORTH S.P.C.: N. 318548.93 E. 1814668.56
NAD '27 NORTH GEO. COORDINATES: LAT. 39.372749 LON. -80.155575
NAD '83 UTM 17N.: N. 4358492.26 E. 572752.34

ID	BEARING	DISTANCE
L1	N 83°53' W	892.65'
L2	N 51°52' E	847.09'
L3	N 19°10' E	853.82'
L4	S 19°00' E	3668.70'
L5	N 74°36' E	1611.71'
L6	S 28°30' W	619.66'
L7	S 38°57' W	737.14'
L8	S 37°35' E	421.40'
L9	S 19°24' W	568.78'
L10	N 26°46' W	1309.28'

(+) DENOTES LOCATION OF WELL ON UNITED STATES TOPOGRAPHIC MAPS



LEGEND:

- LEASE BOUNDARY
- OUTER LEASE BOUNDARY
- SURFACE BOUNDARY
- CREEK/STREAM
- ROADS
- PROPOSED LATERAL
- 500' LATERAL OFFSET
- EXISTING GAS WELL (active)
- EXISTING GAS WELL (plugged)
- GAS WELL (never drilled)
- FOUND MONUMENT (as noted)
- OCCUPIED DWELLING
- EXISTING FENCELINE
- EXISTING OVERHEAD ELECTRIC LINE



EQT PRODUCTION COMPANY WELL NO. WV 515830		
LEASE NO.	LESSOR	LEASE AC.
1006574	EDWARD S. BURTON, ET UX	32.12
1003685	STEPHEN SANDOR JR., ET AL	2
965724	TEX RAYMOND HUGHES, ET UX	26.25
965677	GRACE S. LEEPER	5.5
965764	RUSSELL A. RIGSBY, ET UX	4.59 GROSS
965676	RENEE ADAIR DEVELOPMENT COMPANY, LLC., ET AL	50.94 GROSS
965702	BILLY L. & ELIZABETH LEYH	21



600 Marketplace Suite 200, Bridgeport, WV 26330
Toll Free 855-488-9539
Fax 304-933-3327



Civil & Environmental Consultants, Inc.

DATE AUGUST 21, 2015

SCALE 1" = 1000' ACCURACY 1:200

OPERATORS WELL No. WV 515830

47-091-01326 HCA
API No.

TYPE OF WELL:

GAS:
Production Storage *Deep *Shallow

PROPOSED WORK ON LOCATION:

Drill Drill Deeper Redrill Convert
Fracture/ Stimulate *Plug off to Formation
Perforate New Formation Plug and Abandon
Clean/ Replug Other Than Above
If "Other" Please see Details below—

DETAILS OF PROPOSED WORK _____
*TARGET FORMATION MARCELLUS
ESTIMATED DEPTH TVD: 7,184'



I, the undersigned, hereby certify that this plat is correct to the best of my knowledge and belief and shows all the information required by law and the rules issued and prescribed by the Division of Environmental Protection.

[Signature]

STATE OF WEST VIRGINIA DIVISION OF ENVIRONMENTAL PROTECTION OFFICE OF OIL AND GAS



WELL AREA & LOCATION INFORMATION:

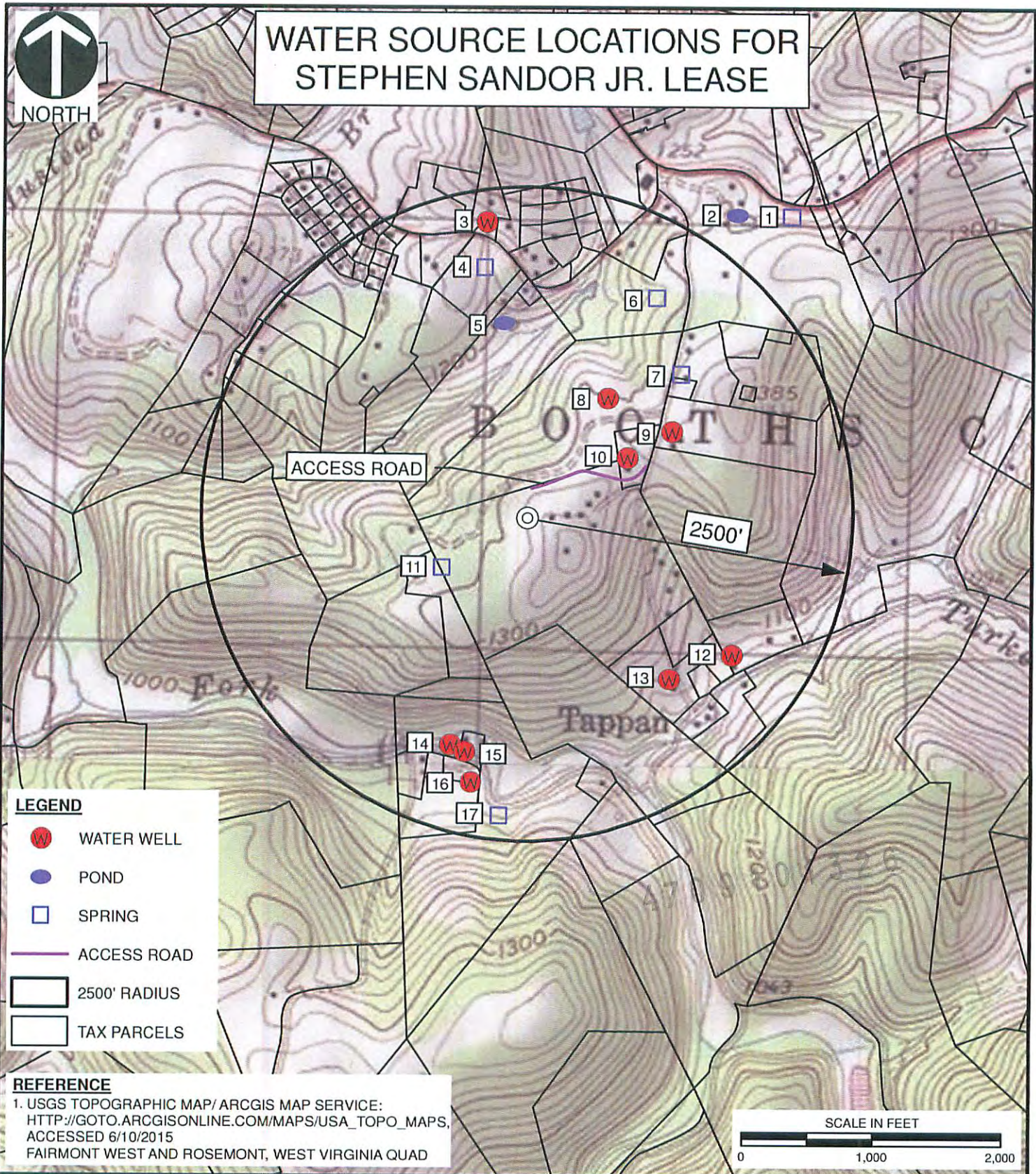
ELEVATION SOURCE DGPS (OPUS)
ELEVATION 1322.4' (GROUND), 1316.1' (PROPOSED)
WATERSHED UNNAMED TRIBUTARY OF HUSTEAD FORK DISTRICT 12/04/2015
COUNTY TAYLOR TOPO QUAD FAIRMONT WEST
SURFACE OWNER MICHAEL G. MORRIS
ACREAGE 47.59 ±
ROYALTY OWNER STEPHEN SANDOR, JR., ET AL LEASE NO. 965747
LEASE ACREAGE 50.79 ±

WELL OPERATOR EQT PRODUCTION COMPANY
ADDRESS 115 PROFESSIONAL PLACE P.O. BOX 280
BRIDGEPORT, WV 26330

DESIGNATED AGENT REX C. RAY
ADDRESS 115 PROFESSIONAL PLACE P.O. BOX 280
BRIDGEPORT, WV 26330



WATER SOURCE LOCATIONS FOR STEPHEN SANDOR JR. LEASE



LEGEND

- WATER WELL
- POND
- SPRING
- ACCESS ROAD
- 2500' RADIUS
- TAX PARCELS

REFERENCE
 1. USGS TOPOGRAPHIC MAP/ ARCGIS MAP SERVICE:
[HTTP://GOTO.ARCGISONLINE.COM/MAPS/USA_TOPO_MAPS](http://gto.arcgis.com/maps/usa_topo_maps),
 ACCESSED 6/10/2015
 FAIRMONT WEST AND ROSEMONT, WEST VIRGINIA QUAD



Civil & Environmental Consultants, Inc.
 99 Cambridge Place - Bridgeport, WV 26330-2820
 Ph: 304-933-3119 • Toll: 855-488-9539 • Fax: 304-933-3327
www.cecinc.com

EQT PRODUCTION COMPANY
 FAW 60 WELL PAD
 TAYLOR COUNTY, WEST VIRGINIA

WATER SOURCES FOR FAW 60

DRAWN BY: ECA	CHECKED BY: JDR	APPROVED BY: DeM	FIGURE NO: WT
DATE: 06/10/2015	SCALE: 1" = 1,000'	PROJECT NO: 143-524.0021	12/04/2015

I:\svr-bridgeport\1201141143-524-GIS\Maps\Task_0021\143524_0021_WATER_SOURCES_TOPO.mxd 6/10/2015 7:45 AM (easpril)