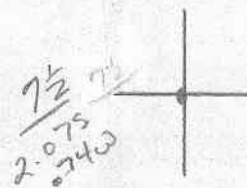


LATITUDE

39° 20' (both)

LONGITUDE 80° 50' 00"

LONGITUDE



7'5 OGIS topo location

on Grafton 7 1/2 Equitable map (A-859)
715A on 1913 MMT Co Rept Map

7.5' loc _____ 15' loc _____
_____ (calc.) _____

Company Home Drilling Co.

Farm Clare F. Shafer 1

Dry hole - MMT corpt, 1913

Quad Grafton 7 1/2

County Taylor

District Booths Creek

WELL LOCATION MAP

File No. 091-70038

Clare F. Shafer No. 1 Well Record (715A). 70038

Courthouse district, 2.4 miles southwest of Pruntytown. Authority, Home Drilling Company. Completed during 1912.

	Thickness. Total.	
(Elevation, 1240' B-A. T.)	Feet.	Feet.
Conductor	10	10
Unrecorded (water, 25')	30	40
Sand	20	60
Unrecorded (water, 150')	380	440
Coal, (Bakerstown)	2	442
Unrecorded	68	510
Sand (salt water, 520')	25	535
Unrecorded	90	625
Sand	40	665
Unrecorded	70	735
Coal, (Upper Kittanning)	3	738
Unrecorded	14	752
Sand	41	793
Unrecorded	2	795
Coal, (Lower Kittanning)	3	798
Unrecorded	29	827
Sand, (H Cow Run)	30	857
Unrecorded	18	875
Sand (water, 885')	10	885

70038

WEST VIRGINIA GEOLOGICAL SURVEY.

635

	Thickness. Total.	
	Feet.	Feet.
Coal, (Upper Mercer)	4	889
Unrecorded	66	955
Sand	55	1010
Unrecorded	130	1140
Sand	40	1180
Unrecorded	90	1270
Sand	25	1295
Unrecorded	55	1350
Sand	20	1370
Unrecorded	130	1500
Big Lime	72	1572
Big Injun sand	95	1667
Unrecorded	343	2010
Fifty-foot sand	40	2050
Unrecorded	25	2075
Thirty-foot sand	15	2090
Unrecorded	25	2115
Gordon Stray sand	8	2121
Unrecorded	7	2128
Gordon sand	6	2134
Unrecorded	301	2435
Fifth sand	55	2490
Unrecorded	50	2540
Bayard sand	45	2585
Unrecorded to bottom	12	2597

The above well starts near the horizon of the Pittsburgh coal. It was abandoned as a dry hole.