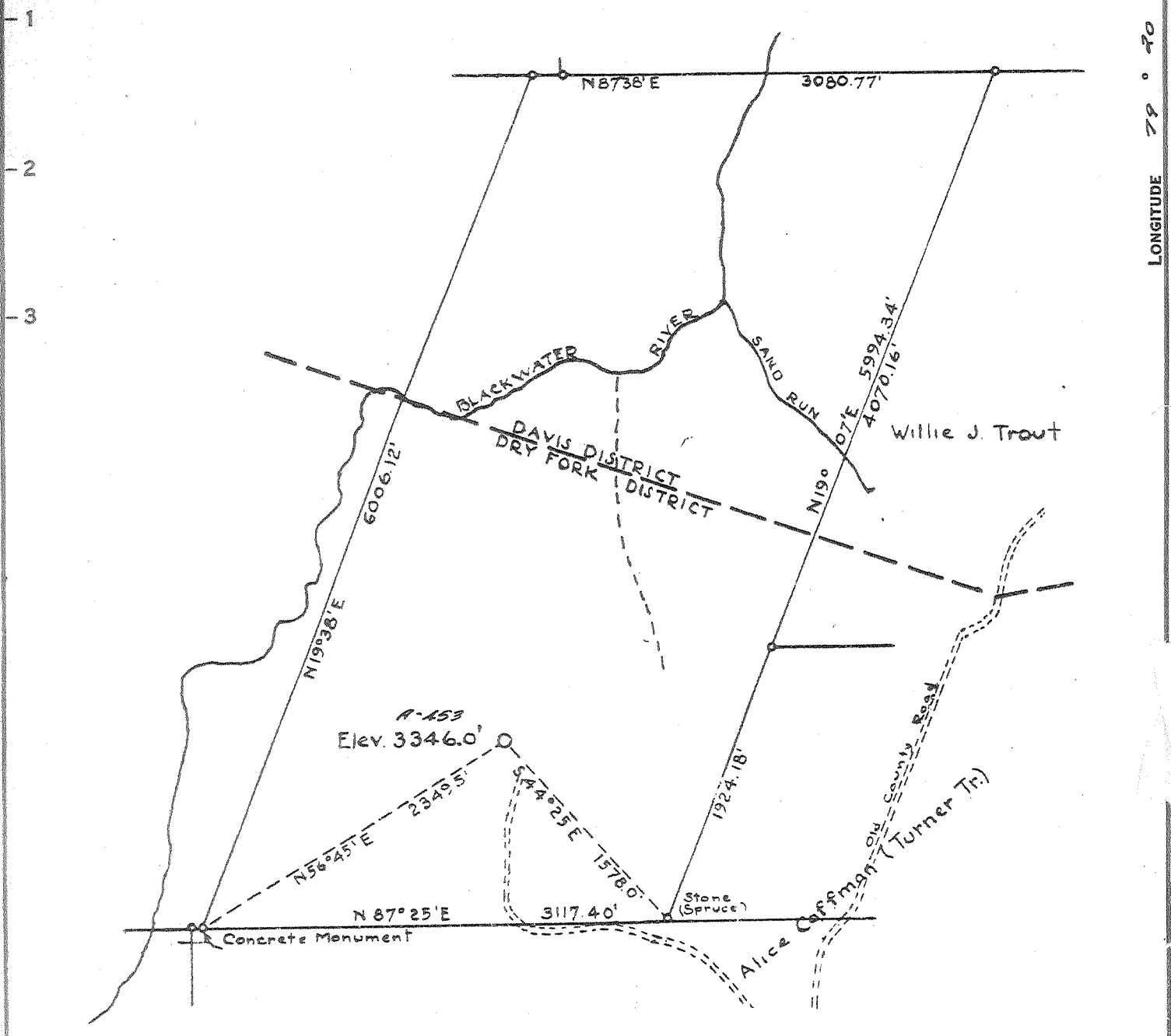


~~275~~ 0.27-S
3' 500



LONGITUDE 79 ° 40

COAL OWNED BY _____

NEW LOCATION...

DRILL DEEPER...

ABANDONMENT...

R-30-23

COMPANY CUMBERLAND & ALLEGHENY GAS

ADDRESS 800 UNION TRUST BLDG. PGH. PA.

FARM W. VA. POWER & TRANSMISSION CO.

TRACT _____ ACRES 695 LEASE No. A-7597

WELL (FARM) No. 1 SERIAL No. A-453

ELEVATION (SPIRIT LEVEL) 3346.0'

QUADRANGLE DAVIS 50

COUNTY TUCKER DISTRICT DRY FORK

ENGINEER Robert M. Heill

ENGINEER'S REGISTRATION No. 369-E

FILE No. _____ DRAWING No. Y-25-245

DATE 28 NOV. 50 SCALE 1" = 1000'

STATE OF WEST VIRGINIA
DEPARTMENT OF MINES
OIL AND GAS DIVISION
CHARLESTON

WELL LOCATION MAP

FILE No. IUC-1-P

+ DENOTES LOCATION OF WELL ON UNITED STATES TOPOGRAPHIC MAPS. SCALE 1 TO 62,500. LATITUDE AND LONGITUDE LINES BEING REPRESENTED BY BORDER LINES AS SHOWN.

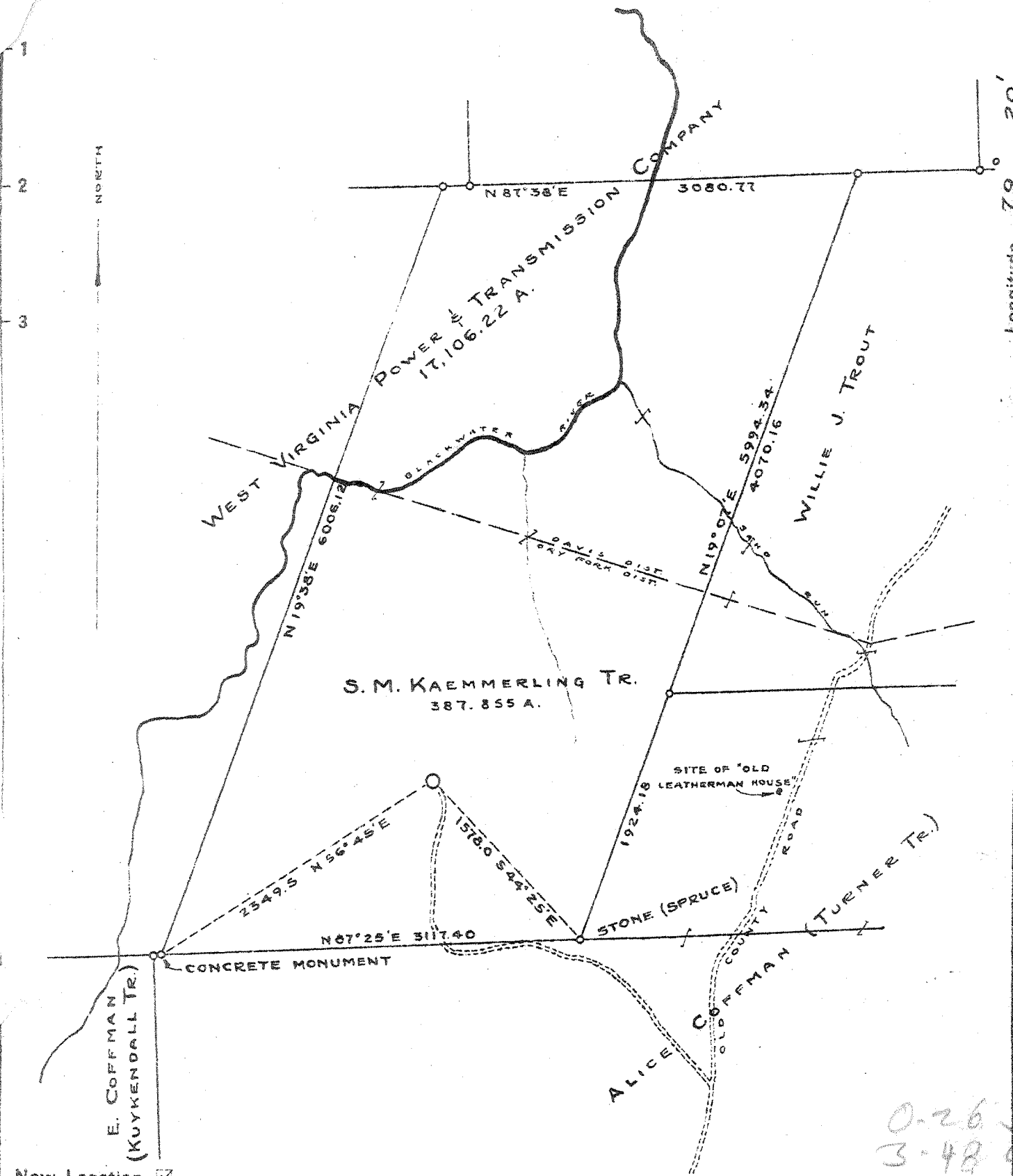
- DENOTES ONE INCH SPACES ON BORDER LINE OF ORIGINAL TRACING.

1-1 287 Deep Well

NORTH

Latitude 39° 05'

Longitude 79° 20'



0-26 S
3-48 E

New Location
 Drill Deeper
 Abandonment

Company	THE OHIO OIL COMPANY
Address	FINDLAY, OHIO
Farm	W. VA. P. & T. CO., KAEMMERLING TR.
Tract	Acres 17,106.22 Lease No. 64
Well (Farm) No.	1 Serial No.
Elevation (Spirit Level)	3346.0
Quadrangle	DAVIS - SC
County	TUCKER District DRY FORK
Engineer	E. B. SHADE
Engineer's Registration No.	
File No.	Drawing No.
Date	OCT. 3, 1942 Scale 1" = 1000'

STATE OF WEST VIRGINIA
 DEPARTMENT OF MINES
 OIL AND GAS DIVISION
 CHARLESTON

WELL LOCATION MAP
 FILE NO. TUC-1

+ Denotes location of well on United States Topographic Maps, scale 1 to 62,500, latitude and longitude lines being represented by border lines as shown.

- Denotes one inch spaces on border line of original tracing.

DEEP WELL

P

Dry Fork District, Tucker County, W. Va.

By The Ohio Oil Co., Findlay, Ohio.

Drilled under permit Tuc-1; Davis Quadrangle.

On 17,106.22 acres, on east side of Blackwater River, south of Sand Run.

Elevation, 3358' L. (D. P.)

Surface and minerals owned by W. Va. P. & T. Co., Pittsburgh, Pa.

Drilling commenced Nov. 22, 1942; completed July 3, 1944.

Volume, 120,000 cu. ft.

Rock pressure, bottom hole, 3200 lbs. in 24 hrs.

Fresh water, 70'; 100'; hole full at 120'.

Salt water, 1389', 1 B. water per hour; 3993', 2 B. water per hour (from tight sand).

13" casing, 39'; 10", 1048'; 6 $\frac{5}{8}$ ", 4023' (30 sacks); 5 $\frac{3}{8}$ ", 7770' (150 sacks);
2" tubing, 8032'; all left in.

Guiberson packer, 2 $\frac{1}{2}$ " EUE 8 rd. thd. x 5 $\frac{1}{4}$ " O. D., set at 7305'.

Perf. top, 7950'; perf. bot., 8028'.

Casing cemented: 6 $\frac{5}{8}$ ", 500'; May 5, 1943; 5 $\frac{3}{8}$ ", 2000', Oct. 5, 1943.

NOTES: Hole full water carried to 1048' where 10" casing set in soft red shale stringer.

1389', water, 1 B. per hour, decreased rapidly.

SIM, 4004-4023'; 6 $\frac{5}{8}$ " casing at 4023'; 30 sacks; SIM, 7090-7114'.

Gas pocket at 7744', later corrected by SIM to 7777', blew tools up hole but exhausted after one hour; estimated 3/4 million.

Extended fishing job--finally ran 5 $\frac{3}{8}$ " O. D. casing at 7770'; 150 sacks.

NOTE: Cable tools reached 7979' Dec. 10, 1943; blowout blew tools up hole and later blew fishing tools up hole to bottom of 5 $\frac{3}{8}$ " casing. Fished until Dec. 24, 1943. Rotary tools moved on Dec. 30, 1943; unable to remove fish.

Window milled through pipe at 7480' and new hole drilled to total depth 8036'

(This is called 8046' on rotary reports; difference due to two derrick floors). Bottom samples very bad due to shale's effect on mud. Cores at 7990' and 8008' show sand tight. Tubing run and mud swabbed out June 25, 1944 to July 3, 1944. Gauged 90,000 to 160,000, fluctuating. No water in Criskany to this depth.

Gas well. (Not commercial--will be abandoned). Record from Smith Sept. 18, 1944.

	Top.	Bottom.
Sand and shale, white, red, and green, hard	0	291
Fifty-foot Sand, gray, hard	291	341
Sand and shale, gray, hard	341	412
Thirty-foot Sand, gray and red, hard	412	458
Shale, red and gray, hard	458	514
Gordon Stray Sand, dark-red, hard	514	533
Sand and shale, red and gray, hard	533	634
Gordon Sand, gray, hard	634	660
Shale and sand, gray, hard	660	746
Sandy shale, red, hard	746	887
Fifth Sand, red, gray, hard	887	902
Shale and sand, light-red, hard	902	1048
Shale and sand, red, hard	1048	1061
Sixth Sand, gray and red, hard	1061	1129
Sand and shale, gray and red, hard	1129	1243
Sandy shale, red, hard	1243	1291
Elizabeth Sand (10 M. gas at 1295'), Medium-hard	1291	1312
Sandy shale, white, gray, and red	1312	1554
Sand and shale, light-gray, medium-hard	1554	1725
Shale, light-gray, medium-hard	1725	1864

W. VA. POWER & TRANSMISSION CO. NO. 1 WELL (Continued).
 (S. M. KAEMMERLING, TRUSTEE).

	Top.	Bottom.
Sandy shale, red and gray, medium-hard	1864	- 1979
Shale (trace of sand), gray, medium-hard	1979	- 2314
Clarendon Sand, light-green, medium-hard (15 M. gas at 2327 and 2415')	2314	- 2338
Shale, gray, medium-hard	2338	- 2415
Shaly sand, light-gray, medium-hard (gas, 2415')	2415	- 2430
Shale (trace of sand), gray, medium-hard	2430	- 2695
Speechley Sand, white, soft	2695	- 2727
Shale, gray, medium-hard	2727	- 3672
Riley Sand (?), light-gray, medium-soft	3672	- 3705
Shale, gray, medium-hard	3705	- 3991
Shaly sand, white, gray, hard	3991	- 3993
Sandy shale, dark-gray, medium-hard	3993	- 4004
Shale, gray, medium-hard	4023	- 4150
Shale, black, medium-hard	4150	- 4170
Sandy shale, dark-gray, medium-hard	4170	- 4329
Kane (?) Sand, gray, shaly, medium-hard	4329	- 4355
Shale (trace of sand), gray, medium-hard	4355	- 4743
Shale (trace of sand), dark-gray, medium- soft	4743	- 7090
Shale, dark-gray, medium-soft	7114	- 7240
Shale, black, soft	7240	- 7322
Tully Lime, gray, medium-soft	7322	- 7342
Shale (gas pocket), 7744'), black, soft	7342	- 7744
Shale, black, soft	7777	- 7820
Shaly lime, dark-gray, medium-soft	7820	- 7865
Huntersville Chert, light-gray, very hard	7865	- 7902
Shale, black, medium-soft	7902	- 7947
Chert and shale, light-gray, very hard	7947	- 7968
Oriskany Sand (gas), light-green to white, hard	7968	- 8036
Total depth		8036

NOTE by RCT: "Oil City Derrick" on June 9, 1945, reported gas from this well was being used to drill the second well, and company removed mud from well and it made 1,500,000 cu. ft., with a rock pressure of 3200 lbs.

WEST VIRGINIA DEPARTMENT OF MINES
OIL & GAS DIVISION
W E L L R E C O R D

Permit No. Tuc -1
Davis Quad.
Company
Address
Farm
Location
Well No
District
Surface
Mineral
Commenced
Completed
Volume
Rock Pressure
Fresh Water
Salt Water

Gas Well
(No Commercial-will be abandoned)

The Ohio Oil Company
Findlay, Ohio A 17,106.22 13 39 39
W. Va. Power and Transmission Co 10 1048 1048
E. Side Blackwater R. so. of Sand Run 6 5/8 4023 4023 30sks.
1 Elev. 3358 (derrick floor) 5 3/16 7770 7770 150
Dry Fork Tucker County sks.
W. Va. P & T Co., Pittsburgh, Penn. 2 1/2" tubing 8032 8032
Same
11-22-42 Guiberson Packer
7-3-44 Size- 2 1/2" EUE 8 rd. thd.
120,000 C.F. x 5 1/2" OD
bottom hole 3200# 24 hrs. Depth 7305'
70'; 100'; H.F. at 120' Perf. top 7950'
1389' 1 B water per hour; Perf. bot 8028'
3993 2 B W per hr (fn. tight sand)
Casing cemented 6 5/8 x
500' 5-5-43
5 1/2" 2000' 10-5-43

Sand&Shale w	R&Grn	H	0	291	NOTES:
Fifty Foot	Gr	H	291	341	Hole full water carried to 1048'
Sand&Shale	Gr	H	341	412	where 10" casing set in soft red
Thirty Foot	Gr&Red	H	412	458	shale stringer.
Shale	R&Gr	H	458	514	1389' water 1 B per hour, decreased
Gordon Stray	Dk Red	H	514	533	rapidly.
Sand & Shale	R& Gr	H	533	634	SLM 4004-4023; 6 5/8" casing at
Gordon	Gr	H	634	660	4023; 30 sacks;
Shale & Sand	Gr	H	660	746	SLM 7090-7114
Sandy Shale	R	H	746	887	
Fifth	R-Gr	H	887	902	Gas pocket at 7744', later corrected
Shale & Sand	Lt Red	H	902	1048	by SLM to 7777', blew tools up hole
Shale & Sand	R	H	1048	1061	but exhausted after one hour; estimated
Sixth	Gr & R	H	1061	1129	3/4 million. Extended fishing job--
Sand & Shale	Gr & R	H	1129	1243	finally ran 5 1/2" OD casing at 7770';
Sandy Shale	R	H	1243	1291	150 sacks.
Elizabeth *	Gr	Med H	1291	1312	10 M at 1295
Sandy Shale w	Gr& R	Med H	1312	1554	
Sand & Shale	Lt Gr	Med H	1554	1725	
Shale	Lt Gr	Med H	1725	1864	
Sandy Shale	Red & Gr	Med H	1864	1979	
Shale (Tr. Ss)	Gr	Med H	1979	2314	
Clarendon *	Lt Grn Gr	Med H	2314	2338	15 M at 2327 & 2415
Shale	Gr	Med H	2338	2415	
Shaley Sand *	Lt Gr	Med H	2415	2430	
Shale (tr ss)	Gr	Med H	2430	2695	
Speechley	Wh	S	2695	2727	NOTE:
Shale	Gr	Med H	2727	3672	Cable tools reached 7979' 12/10/43;
Reiley (?)	Lt Gr	Med S	3672	3705	blowout blew tools up hole and later
Shale	Gr	Med H	3705	3991	blew fishing tools up hole to bottom
Shaley Sand w	Gr	H	3991	3993	of 5 1/2" casing. Fished until 12-24-43
Sandy Shale	Dk Gr	Med H	3993	4004	Rotary tools moved on 12-30-43; un-
Shale	Gr	Med H	4023	4150	able to remove fish. Window milled
Shale	Bk	Med H	4150	4170	through pipe at 7480' and new hole
Sandy Shale	Dk Gr	Med H	4170	4329	dilled to TD 8036' (This is called
Kane(?)	Gr Shaley	Med H	4329	4355	8046' on rotary reports; difference
Shale(Tr. ss)	Gr	Med H	4355	4743	due to two derrick floors). Bottom
Shale(Tr. ss)	Dk. gr	Med S	4743	7090	samples very bad due to shale's
Shale	Dk Gr	Med S	7114	7240	effect on mud. Cores at 7990' and
Shale	Bk	S	7240	7322	8008' show sand tight. Tubing
Tully gr. ls.	Gr	Med S	7322	7342	run and mud swabbed out 6-25-44 to
Shale *	Bk	S	7342	7744	7-3-44. Gauged 90,000 to 160,000
Shale	Bk	S	7777	7820	fluctuating. No water in Oriskany
Shaley Lime	Dk Gr	Med S	7820	7865	to this depth.
Huntersville	Lt gr	V. H	7865	7902	
Shale	Bk	Med S	7902	7947	
Chert & Shale	Lt Gr	V H	7947	7968	
Oriskany SS *	Lt Gnto wh	H	7968	8036	T.D.

475
7820 7968
3346 3346

-4474 -4622



STATE OF WEST VIRGINIA
DEPARTMENT OF MINES
OIL AND GAS DIVISION 13

Well to be abandoned by
Cumberland & Allegheny Gas Company
12/5/60

Quadrangle DAVIS
Permit No. TUCKER-1

WELL RECORD

Non-commercial
Oil or Gas Well

Company The Ohio Oil Company
Address Findlay, Ohio
Farm W. Va. Power & Transmission Co Acres 17,106
Location (waters) E. side Blackwater R. So of Sand Run
Well No. 1 Elev. 3358 (derrick floor)
District Dry Fork County Tucker
The surface of tract is owned in fee by W. Va. P. & T. Co.
Address Pittsburgh, Pa.
Mineral rights are owned by Same
Address 11/22/42
Drilling commenced 7/3/44
Drilling completed _____
Date Shot _____ From _____ To _____
With _____
Open Flow _____ /10ths Water in _____ Inch
_____ /10ths Merc. in _____ Inch
Volume 120,000 Cu. Ft.
Rock Pressure 3200 lbs. 24 hrs.
Oil _____ bbls., 1st 24 hrs.
WELL ACIDIZED _____
WELL FRACTURED _____

Casing and Tubing	Used in Drilling	Left in Well	Packers
10			Kind of Packer _____
18	39'	39'	Guiberson
10	1048'	1048'	Size of <u>2 1/2" EUE 8rd</u>
8 3/4	---	---	thd. x <u>5 1/2" OD</u>
6 3/8 30 scks	4023'	4023'	Depth set <u>7305'</u>
5 3/16 k50 scks	7770'	7770'	
3			Perf. top <u>7950'</u>
2 1/2" tubins	8032'	8032'	Perf. bottom <u>8028'</u>
Liners Used			Perf. top _____
			Perf. bottom _____

CASING CEMENTED 6-5/8" SIZE 500' No. Ft. 5/5/43 Date
5 1/2" 2000' 10/5/43
COAL WAS ENCOUNTERED AT _____ FEET _____ INCHES
_____ FEET _____ INCHES _____ FEET _____ INCHES
_____ FEET _____ INCHES _____ FEET _____ INCHES

RESULT AFTER TREATMENT

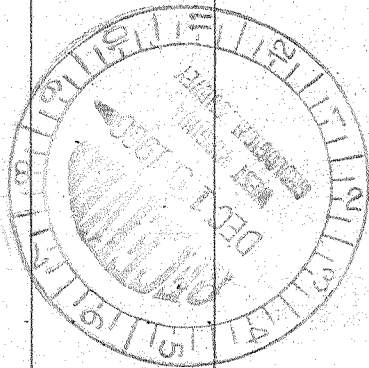
ROCK PRESSURE AFTER TREATMENT

Fresh Water _____ Feet Salt Water _____ Feet

Formation	Color	Hard or Soft	Top	Bottom	Oil, Gas or Water	Depth	Remarks
Sand & Shale	Red & Gr.	Hard	0	291	Water	70' - 100'	Hole Full 120'
✓ FIFTY-FOOT	Gray	"	291	341			
Sand & Shale	Gray	"	341	412			
✓ THIRTY-FOOT	Red & Gr	"	412	458			
Shale	Red & Gr	"	458	514			
✓ GORDON STRAY	Dk. red	"	514	533			
Sand & Shale	Red & Gr	"	533	634			
✓ GORDON	Gray	"	634	660			
Shale & Sand	Gray	"	660	746			
Sandy Shale	Red	746	887				
✓ FIFTH	Red & Gr	"	887	902			
Shale & Sand	Lt. Red	"	902	1048			
Hole full water carried to 1048' where 10" casing set in soft red shale stringer)							
Shale & Sand	Red	Hard	1048	1061			
✓ SIXTH	Gray & Rd	"	1061	1129			
Sand & Shale	Gray & Rd	"	1129	1243			
Sandy Shale	Red	Hard	1243	1291			
✓ *Elizabeth	Gray	Med Hard	1291	1312	10 MCF-1295'		1389'
Sandy Shale	Gray & Rd.	"	1312	1554	1-bbl water/hr; decreased rapidly/		
Sand & Shale	Lt. Green	"	1554	1725			
Shale	Lt. Gray	"	1725	1864			
Sandy Shale	Red & Gr	"	1864	1979			
Shale (Tr. ss)	Gray	"	1979	2314			
✓ *CLARENDON	Lt. Grn.Gr	"	2314	2338	15 MCF	2327' & 2415'	
Shale	Gray	"	2338	2415			
*Shaley Sand	Lt. Gray	"	2415	2430			
Shale (tr.ss)	Gray	"	2430	2695			
✓ SPEECHLEY	White	Soft	2695	2727			
Shale	Gray	Med Hard	2727	3672	(OVER)		

(over)

Formation	Color	Hard or Soft	Top ⁽¹³⁾	Bottom	Oil, Gas or Water	Depth Found	Remarks
REILEY (?)	Lt. Gray	Med. Soft	3672	3705			
Shale	Gray	" Hard	3705	3991			
Shaley Sand	Gray	Hard	3991	3993	2 bbl. water/hour		(fn. tight sand)
Sandy Shale	Dk. Gray	Med Hard	3993	4004			
(SLM 4004-4023'; 6-5/8" casing at 4023'; cemented 30 sacks)							
Shale	Gray	Med Hard	4023	4150			
Shale	Black	" "	4150	4170			
Sandy Shale	dk. Gray	" "	4170	4329			
KANE (?)	Gray (shaley)	"	4329	4355			
Shale (tr. ss)	Gray	Med Hard	4355	4743			
Shale "	Dk. Gray	" Soft	4742	7090			(SLM 7090'-7114')
Shale	" "	" "	7114	7240			
Shale	Black	soft	7240	7322			
TULLY 9gr. s.	Gray	Med Soft	7322	7342			
*Shale	Black	soft	7342	7744			
(Gas pocket at 7744', later corrected by SLM to 7777', blew tools up hole but exhausted after one hour; estimated 3/4 million. Extended fishing job - finally ran 5 1/2" OD casing at 7770'; cemented 150 sacks.)							
Shale	Black	soft	7777	7820			
Shaley Lime	dk. Gray	Med Soft	7820	7865			
HUNTERSVILLE	lt. Gray	Very Hard	7865	7902			
Shale	black	Med Soft	7902	7947			
Chert & Shale	lt. gray	Very Hard	7947	7968			
*ORISKANY ss	lt. gray-wht.	hard	7968	8036			
Total Depth				8036			
475							
NOTE: Cable tools reached 7979', 12/10/43; blowout blew tools up hole and later blew fishing tools up hole to bottom of 5 1/2" casing. Fished until 12/24/43. Rotary tools moved on 12/30/43; unable to remove fish. Window milled through pipe at 7480' and new hole drilled to TD 8036' (this is called 8046' on Rotary reports; difference due to two derrick floors). bottom samples very bad due to shale's effect on mud. Cores @7990' and 8008' show sand tight. Tubing run and mud swabbed out 6/25/44 to 7/3/44. Gaged 90,000 to 160,000 fluctuating. No water in Oriskany to this depth.							



Date _____, 19____

APPROVED _____, Owner

By _____ (Title)