

Latitude

39 12 30

79 37 30

Longitude

OGIS  
7.5' loc  
KLG  
7/20/1999  
2.53S  
0.50W

Topo Location

7.5' Loc. \_\_\_\_\_ 15' Loc. 5.41S  
\_\_\_\_\_ (calc.) 2.73W

Company \_\_\_\_\_

Farm \_\_\_\_\_

15' Quad Parsons NC  
(sec.) \_\_\_\_\_

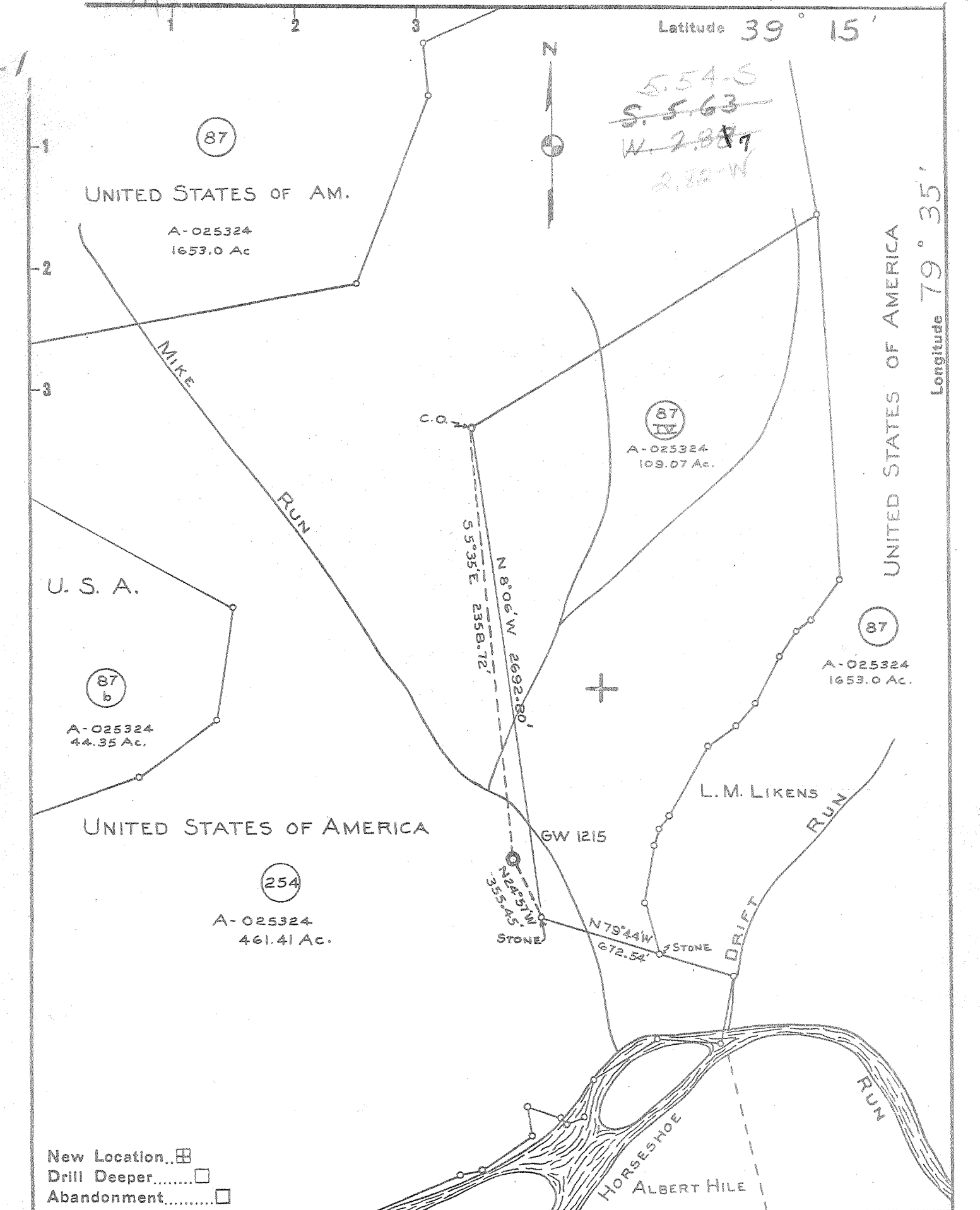
7.5' Quad St George  
\_\_\_\_\_

District \_\_\_\_\_

WELL LOCATION PLAT

County 093 Permit 13

DSEP WEL



Company COLUMBIAN CARBON Co.  
 Address BOX 873 CHARLESTON W.VA.  
 Farm UNITED STATES OF AMERICA  
PART OF 2447.53 Ac. A-025324  
 Tract 254 Acres 461.41 Lease No. C-4247  
 Well (Farm) No. C-1 Serial No. GW-1215  
 Elevation (Spirit Level) 1638.97 Ft.  
 Quadrangle PARSONS 20 S-5.63 W-2.88  
 County TUCKER District ST. GEORGE  
 Engineer Wendell Moore  
 Engineer's Registration No. 2113  
 File No. \_\_\_\_\_ Drawing No. W-5-55  
 Date MAR. 14, 1955 Scale 1" = 660'

STATE OF WEST VIRGINIA  
 DEPARTMENT OF MINES  
 OIL AND GAS DIVISION  
 CHARLESTON

**WELL LOCATION MAP**  
 FILE NO. TUC-13

+ Denotes location of well on United States Topographic Maps, scale 1 to 62,500, latitude and longitude lines being represented by border lines as shown.

- Denotes one inch spaces on border line of original tracing.

*Handwritten:* 1-0-0 Deep Well

St. George District, Tucker County, W. Va.

By Columbia Carbon Co., B-x 873, Charleston, W. Va.

Drilled under permit Tac-13; Parsons quadrangle.

Elevation, 1638.97' L.

On 2447.53 ac es, on Mike Run.

Surface and minerals owned by Bureau of Land Management, Washington, D.C.

Drilling commenced May 25, 1956; completed Oct. 31, 1956.

8-10-55. Set packer at 3365'. Pumped in 2 bbls. oil, 375 gals. acid - displaced with 20 bbls. water. Pressured up to 1500#. Put in 375 gals. acid, displaced with 30 bbls. oil. Gas gauged 521 MCF.

8-11-55. Hydraulfraced with 2000 gals. kerosene mixed with gel. and 3000# sand. Started pumping in with two pumps at 2250# pressure. Went to 3600# maximum, followed with 56 bbls. oil and pressure dropped from 3600# to 2400#.

8-29-55. Set Baker #7 8 packer at 2494'. Pumped in 10 bbls. oil. Pumped with 2 pumps at 2200# pressure, with 4 pumps at 2900# pressure. Gelled 1600 gals. kerosene. Pumped in with 3000# sand. Started in at 1400# pressure. Went to 4300# maximum. Displaced with 25 bbls. oil and pressure dropped from 4300# to 2500# when quit pumping. Let set 30 minutes, 1700# on tubing when shut in.

Fresh water at 39', hole full; 90', hole full.

Salt water at 6248', 5 hrs./30 hrs.

13-3/8" casing, 67' 10"; 10", 514' 9" (pulled); 8", 1037' (971' 1" left in); 7", 1568' 8".

Widgit bottom hole packer, 8", set at 1037' L.M.

Casing record: 6-2-55. Ran 13-3/8" drive pipe. 6-5-55. Ran 10" casing at 507' L.M. 6-17-55. Ran 8" casing with Widgit bottom hole packer.

8-....-55. Ran 7" casing at 3550' and cemented with 100 sacks of cement.

No coal was encountered.

Try hole. Record to Dept. of Mines dated Jan. 9, 1957.

Record from Allen Jan. 28, 1957.

	Top.	Bottom.	
Top soil	0	25	
Slate	25	504	
Broken lime	504	535	
Slate and shells	535	2175	
Lime	2175	2279	
Shale	2279	2422	
Slate and shells	2422	2797	
Black shale	2797	2924	
Lime	2924	2934	
Black shale	2934	3342	
Brown shale	3342	3345	
Lime	3345	3380	BLM
		3388	BLM
Chert (gas shows, 3403-10, 3417-20, and 3430-34')	(BLM)	3388	3491
Shale		3491	3542
Crystalline sand		3542	3688
Lime		3688	3902
Shale		3902	3930
Lime		3930	5355
Sand		5355	5401
Lime		5401	5797
Sand		5795	5810
Lime		5810	5890

	Top.	Bottom.
Sand	5890	5916
Black lime	5916	6029
Sand	6029	6052
lime	6052	6180
Green sand	6180	6205
lime	6205	6260
Sand	6260	6298
Black lime	6298	6385
Total depth		6385

(SEE ROLE)

6385

1639

4746

Did not reach  
Tucaron



STATE OF WEST VIRGINIA  
DEPARTMENT OF MINES  
OIL AND GAS DIVISION 6

Quadrangle Parsons 2 SW

WELL RECORD

Permit No. TUC-13

Oil or Gas Well dry

(KIND)

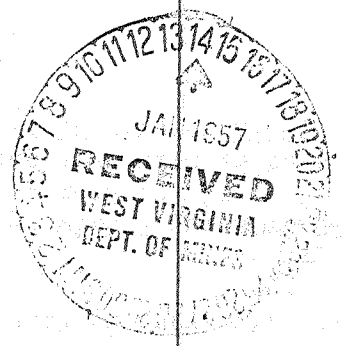
Company Columbian Carbon Company  
Address Box 873, Charleston 23, W.Va.  
Farm United States of America Acres 2447.53  
Location (waters) Mike Run  
Well No. C-1, GW-1215 Elev. 1638.97'  
District St. George County Tucker  
The surface of tract is owned in fee by Director, Bureau of Land Management  
Address Washington 25, D.C.  
Mineral rights are owned by same

Casing and Tubing	Used in Drilling	Left in Well	Packers
Size			
16			Kind of Packer <u>M.B.H.</u>
13 3/8"	67'10"	67'10"	
10 3/4"	51'9"	pulled	Size of <u>8-5/8"</u>
8 1/4"	1037'	971'1"	
<del>7"</del> 7"	3568'8"	3568'8"	Depth set <u>1037'DLM</u>
5 3/16			
3			Perf. top
2			Perf. bottom
Liners Used			Perf. top
			Perf. bottom

Drilling commenced 5-25-55  
Drilling completed 10-31-56  
Date Shot From To  
With see reverse side  
Open Flow /10ths Water in ✓ Inch  
/10ths Merc. in ✓ Inch  
Volume dry hole Cu. Ft.  
Rock Pressure lbs. hrs.  
Oil bbls., 1st 24 hrs.  
Fresh water 39' 90' feet feet  
Salt water 6548 feet feet

CASING CEMENTED see reverse side SIZE No. Ft. Date  
COAL WAS ENCOUNTERED AT none FEET INCHES  
FEET INCHES FEET INCHES  
FEET INCHES FEET INCHES

Formation	Color	Hard or Soft	Top	Bottom	Oil, Gas or Water	Depth Found	Remarks
Top soil			0	25	F. water	39'	hole full
Slate			25	504	F. water	90'	hole full
Broken Lime			504	535			
Slate and Shells			535	2175			
Lime			2175	2279			
Shale			2279	2422			
Slate and Shells			2422	2797			
Black Shale			2797	2924			
Lime (small setting)			2924	2934			
Black Shale			2934	3342			
Brown Slate			3342	3345			
Lime			3345	3380' DLM			
				3388' SIM			
Chert			3388' SLM	3491	Gas shows:		
Shale			3491	3542	3403-10'		
Oriskany Sand			3542	3688	3417-20'		
Lime			3688	3902	3430-34'		
Shale			3902	3930			
Lime			3930	5355			
Sand			5355	5401			
Lime			5401	5797			
Sand			5797	5810			
Lime			5810	5890			
Sand			5890	5916			
Black Lime			5916	6029			
Sand			6029	6052			
Lime			6052	6180			
Green Sand?			6180	6205			
Lime			6205	6260			
Sand			6260	6298			
Black Lime			6298	6385	S. Water	6248'	5 blrs/30 hrs.
TOTAL DEPTH				6385'			
BAD HOLE							



Formation	Color	Hard or Soft	Top 6	Bottom	Oil, Gas or Water	Depth Found	Remarks
8-10-55							set packer at 3365' Pumped in 2 bbls. oil, 375 gal acid - displaced with 20 bbls. water. Pressured up to 1500#. Put in 375 gal. of acid displaced with 30 bbls. oil. Gas gauged 52MCF.
8-11-55							Hydrafraced with 2000 gal. kerosene mixed with gel and 3000# sand. Started pumping in with two pumps at 2250# pressure. Went to 3600# maximum followed with 56 bbls. oil and pressure dropped from 3600# to 2400#.
8-29-55							Set Baker RT 8 packer at 2494'. Pumped in 10 bbls. oil. Pumped with 2 pumps <del>at 2200#</del> pressure - with 4 pumps at 2900# pressure. Gelled 1600 gal. kerosene. Pumped in with 3,000# sand. Started in at 1400# pressure - went to 4300# maximum. Displaced with 25 bbls. oil and pressure dropped from 4300# to 2500# when quit pumping. Let set 30 minutes 1700# on tubing when shut in.
<u>CASING RECORD:</u>							
* ** %							
6-2-55							Ran 13-3/8" drive pipe
6-5-55							Ran 10-3/4" casing at 507'DLM
6-17-55							Ran 8-5/8" casing with Midget bottom hole packer
8- -55							Ran 7" casing at 3550' and cemented with 100 sacks of cement

42  
 56  
252  
~~2200~~  
 375 42  
375 52  
 750 84  
240  
 2184

Date January 9, 19 56

APPROVED Columbian Carbon Company, Owner

By W. S. Moore, Sup't of Prod.  
(Title)