

Minimum Error of Closure 1/2000  
 Source of Elevation SET. ROADS AT COSNER SCHOOL  
 EL. = 3263

- Fracture.....
- New Location.....
- Drill Deeper.....
- Abandonment.....

I, the undersigned, hereby certify that this map is correct to the best of my knowledge and belief and shows all the information required by paragraph 6 of the rules and regulations of the oil and gas section of the mining laws of West Virginia.

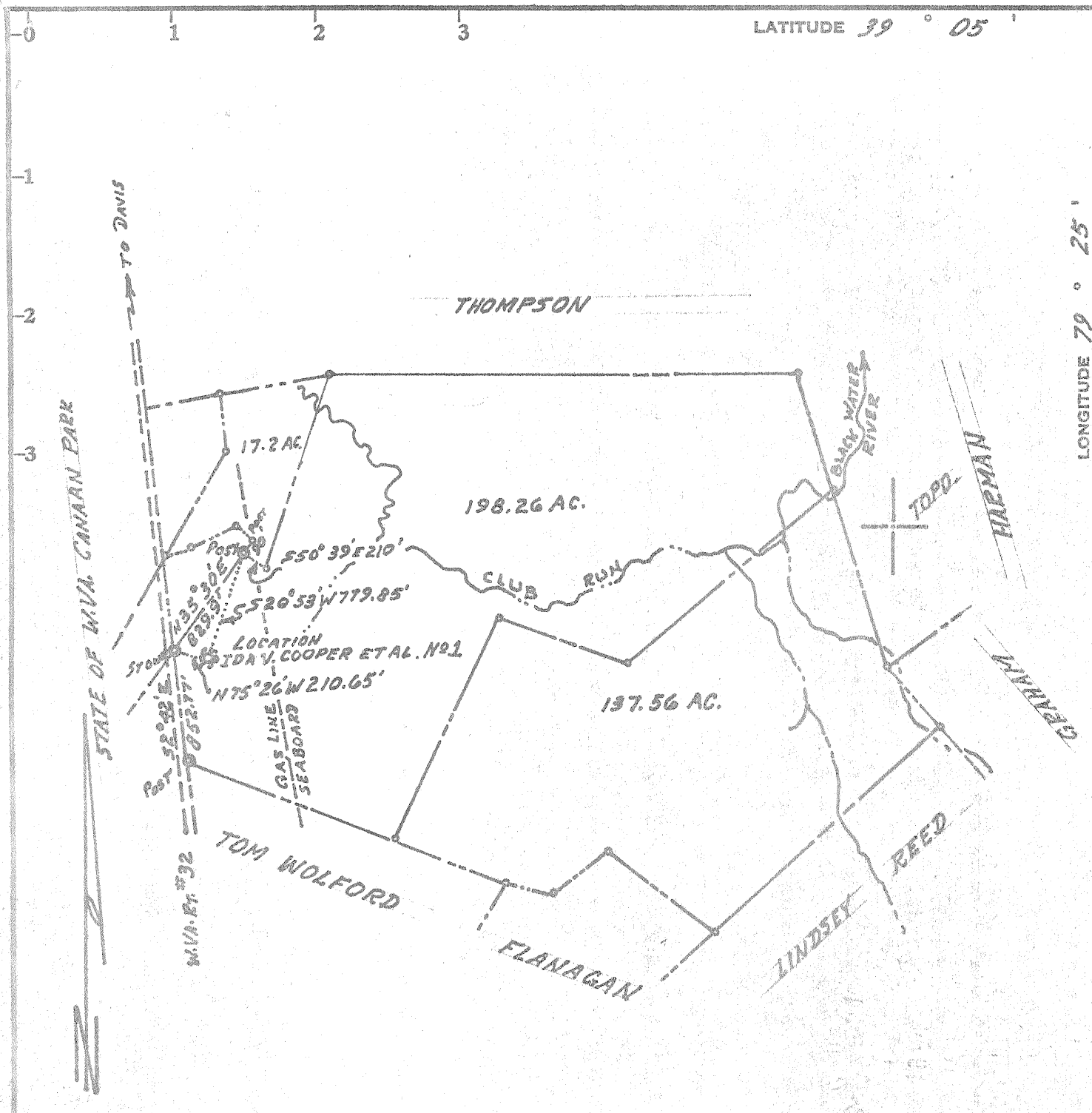
Signed: Paul G. Dean  
 Squares: N S E W

Company 1968 UNITED PRODUCERS FUNDS, INC.  
 Address 220 NW 4TH ST. EVANSVILLE, INDIANA  
 Farm JDA V. COOPER  
 Tract 1 Acres 379.72 Lease No. \_\_\_\_\_  
 Well (Farm) No. ONE Serial No. Unit #2  
 Elevation (Spirit Level) 3230  
 Quadrangle DAVIS SW  
 County TUCKER District DRY FORK  
 Engineer PAUL G. DEAN  
 Engineer's Registration No. 1856  
 File No. 196-B-60 Drawing No. 70-44  
 Date MAY 12, 1970 Scale 1" = 1000'

STATE OF WEST VIRGINIA  
 DEPARTMENT OF MINES  
 OIL AND GAS DIVISION  
 CHARLESTON

**WELL LOCATION MAP**

FILE NO. Duc-37  
Cancelled - 10-15-70  
 + Denotes location of well on United States Topographic Maps, scale 1 to 62,500, latitude and longitude lines being represented by border lines as shown.  
 - Denotes one inch spaces on border line of original tracing.



Minimum Error of Closure 1/2000

Source of Elevation SET. ROADS AT COSMOP SCHOOL

EL. = 3263

- Fracture
- New Location
- Drill Deeper
- Abandonment

I, the undersigned, hereby certify that this map is correct to the best of my knowledge and belief and shows all the information required by paragraph 6 of the rules and regulations of the oil and gas section of the mining laws of West Virginia.

Signed: Paul S. Dean

Map No. \_\_\_\_\_

Squares: N S E W

Company	<u>1968 UNITED PRODUCERS FUNDS, INC.</u>		
Address	<u>220 N.W. 4TH ST. EVANSVILLE, INDIANA</u>		
Farm	<u>IDA V. COOPER</u>		
Tract	<u>1</u>	Acres	<u>379.72</u>
Well (Farm) No.	<u>ONE</u>	Lease No.	_____
		Serial No.	<u>Canaan Valley Unit #2</u>
Elevation (Spirit Level)	<u>3230</u>		
Quadrangle	<u>DAVIS</u>	<u>SW</u>	
County	<u>TUCKER</u>	District	<u>DRY FORK</u>
Engineer	<u>PAUL G. DEAN</u>		
Engineer's Registration No.	<u>1856</u>		
File No.	<u>136-B-60</u>	Drawing No.	<u>70-44</u>
Date	<u>MAY 12, 1970</u>	Scale	<u>1" = 1000'</u>

STATE OF WEST VIRGINIA  
DEPARTMENT OF MINES  
OIL AND GAS DIVISION  
CHARLESTON

**WELL LOCATION MAP**

FILE NO. Duc-37

+ Denotes location of well on United States Topographic Maps, scale 1 to 62,500, latitude and longitude lines being represented by border lines as shown.

— Denotes one inch spaces on border line of original tracing.