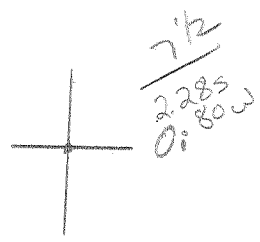


LATITUDE 39°07'30"

79°40'

LONGITUDE



Location determined from  
Map II 08 1921 Tucker Co Rpt maps

V. 16 says the location is  
5.8 mi. S by 39°10'  
0.6 mi. W by 79°40'

7'5 OGIS topo location

7.5' loc	_____	15' loc	<u>5105</u>
	_____	(calc.)	<u>0.80W</u>

Company Parsons Pulp & Lumber Co.

Farm Parsons Pulp & Lumber Co. 1

Quad Parsons

County Tucker

District Black Fork

WELL LOCATION MAP  
was 093 - 8000 and Tucker A

File No. 093 - 70001 Barfurn

now: 093 - 72

DEEP WELL LO (0)

PARSONS PULP & LUMBER CO. NO. 1 WELL.

Black Fork District, Tucker County, W. Va.

By Parsons Pulp & Lumber Co.

At Parsons.

Started to spud Feb. 14, 1912.

Elevation, 1650' B.

Record to 3680' received from Dr. F. L. Slocum, June 26, 1912.

p. 270 of 1923 Co. Rep

on Map II of 1921

Tucker Co. maps

Now 093-72

	Top.	Bottom.
Conductor	0	15
Hole full of water in blue sand	41	
Hard boulders and slate	70	120
Lime shells	120	385
Pink rock (8" casing, 375')	385	390
Little gas in gritty lime	500	
Gritty lime	500	825
Black sand and little gas	825	835
Reduced hole	940	
Black shale and lime shells	835	1000
Pocket gas	1053	
Slate	1053	1600
Black shale	1600	1775
Black hard shells	1775	1840
Black hard lime	1840	1960
Slate and shells	1960	2110
Hard blue lime	2110	2130
White slate	2130	2340
Black slate	2340	2370
Hard black...? (a little gas at 2400')	2370	2500
Slate	2500	2580
Hard black gritty lime	2580	3030
Black slate and shells	3030	3130
Black slate, a few shells	3130	3680

LETTER FROM W. J. MORIARTY, Parsons, W. Va.:

Top of Oriskany Sand	3980
Salt water in sand, 3990-4000'.	
Sand turned kind of limy at	4040
Went through at	4060
Short for about 3 feet	4060 - 4063
Hard, not very gritty, lime	4063 - 4100

"Or we called it lime, because it did not wear bits 'bad'; in places it was awful hard for 2 or 3 feet, then it would drill good for 2 or 3 feet.

At 4100 it became more regular and no grit to speak of, and black. We can make about 6 to 8 feet a day in it, with 3750 feet of salt water in hole. It has not changed any for the last 60 feet. We are now about 4160 feet and water stands about 400 feet from top of hole."

(See other side for another partial record and Notes).

PARSONS PULP & LUMBER CO. NO. 1 WELL.

Record from E. A. Hoyt, of Parsons Pulp & Lumber Co.,  
Parsons, W. Va., to D. B. Reger, June 8, 1912.

"....I just succeeded in locating a record of the well which was drilled here, but I find that I haven't it in detail after 3680 feet. At about 3800 feet we struck a strong flow of salt water which tested thirty some per cent. salt, and this filled the well up to within 400 to 600 feet of the top, and that the total depth of the well was from 4200 to 4220 feet."

	Top.	Bottom.
Started to spud Feb. 14, 1912.		
Conductor, 15'		
Hole full of water in blue sand, 41'		
Hard boulders and slate	70 -	120
Lime shells	120 -	385
Pink rock	385 -	390
8" casing, 475'		
Little gas in gritty lime, 500'		
Gritty lime	500 -	825
Black sand and little gas	825 -	835
Reduced hole at 940'		
Black shale and lime shells	835 -	1100
Pocket of gas, 1053'		
Slate	1053 -	1600
Black shale	1600 -	1775
Black hard shells	1775 -	1840
Black hard lime	1840 -	1960
Slate and shells	1960 -	2110
Hard blue lime	2110 -	2130
White slate	2130 -	2340
Black slate	2340 -	2370
Hard black.....	2370 -	2500
Slate	2500 -	2580
Hard black gritty lime	2580 -	3030
Black slate and shells	3030 -	3130
Black slate, a few shells	3130 -	3680
Total depth		4200 to 4220 (?)

V. 16

well 30001

now → 093-72

WEST VIRGINIA GEOLOGICAL SURVEY

661

TUCKER COUNTY WELL RECORDS.

Tucker County Permit and Map Numbers.

No.	Farm Name and Well No.	Company.	District.
	W. Va. Power & Transmission Co. (S. M. Kaemmerling, Trustee) No. 1	Ohio Oil	Dry Fork
	Parsons Pulp & Lumber Co. No. 1	Parsons P. & L.	Black Fork

Parsons Pulp & Lumber Co. No. 1 Well.

Tucker A

Black Fork District, Tucker County, W. Va.  
 Parsons Pulp & Lumber Company.  
 A on map.  
 Elevation, 1650' B.  
 water in Oriskany.  
 Located 5.3 mi. S. of 39° 10' and 0.6 mi. W. of 79° 40'—WC—Parsons  
 quadrangle.  
 Shavers Fork.  
 Southwest edge of Parsons; 1.9 mi. N. W. of Hambleton.

	Top.	Bottom.	Thickness.	Elevation (top).
Oriskany Sand	3825	3845	20)	-2175
		3980?	155)	
	3980	4060	80)	-2330
		4250?	270)	

Thickness, Devonian Shales, 3825 feet. Total depth, 4250'.  
 Records: Completed in 1912.  
 Shales above well mouth total 3112'±.  
 Salt water in Oriskany 3990-4000' (8 to 10 barrels daily).  
 Filled up 3700'. Little gas at 2400'.

West Virginia Power & Transmission Company (S. M. Kaemmerling, Trustee) No. 1 Well.

Black Fork District, Tucker County, W. Va.  
 The Ohio Oil Company.  
 Permit No. Tuc-1.  
 Elevation, 3346.0' L.  
 Located 0.25 mi. S. of 39° 05' and 3.52 mi. W. of 79° 20'—SC—Davis  
 quadrangle.  
 E. + side of Blackwater River.  
 5.2 mi. N. E. of Cortland; 5.2 mi. S. E. of Davis.

Records: Drilled to 7979' and lost cable tools and unable to recover.  
 Drilling at 7800' March 20, 1944 with rotary outfit after setting  
 whipstock at 7500'. 700 M. gas reported at 7752' in old hole which  
 decreased to 125 M. while fishing. Reported Oriskany Sand reached  
 at 7968' in old hole.

COMPLETIONS: Update/Display

01) COUNTY: 093 (Tucker) 07) ELEVATION: 1650 13) COMP FLAG: ( )  
 02) PERMIT: 72 08) ELEVATION TYPE: G (Ground Lvl)  
 03) SUFFIX: O (New Location) 14) RIG TYPE: 3 (Cable Tool)  
 CLASSIFICATION: DATES: MM/DD/YYYY 15) WELL TYPE: 8 (D/GS)  
 04) INITIAL: 1 (New-fld Wldcat) 09) SPUD: 02/14/1912 16) CMPL METH: 1 (Nat/Open H)  
 05) FINAL: 0 (Unsuccessful) 10) COMP: / /1912  
 06) FIELD: 000 (Unnamed) 11) BATCH: / / 12) YEAR RPTD:  
 OPEN 17) GAS-Before TREATMENT: 000000 18) OIL-Before TREATMENT: 0000  
 FLOW: 19) GAS-After TREATMENT: 000000 20) OIL-After TREATMENT: 0000  
 ROCK 21) NATURAL: 0000 22) TIME (NATURAL, IN HOURS): 0000  
 PRESSURE: 23) TREATED: 0000 24) TIME (TREATED, IN HOURS): 0000  
 DEPTHS: 25) TOTAL FTG: 04220 26) NEW FTG: 04220 27) EXPL FTG: 04220  
 DEEPEST 28) AT TOTAL DEPTH: 485 29) TESTED: 475  
 FORMATION: (Helderberg) (Oriskany)

STRATIGRAPHY: Modification

ID: 01) COUNTY 093 02) PERMIT 72 03) SUFFIX O (New Location)  
 04) ELEVATION OF DATUM 1650 05) TYPE OF DATUM B (Barometer)  
 06) FORMATION CODE 461 (Onondaga Ls) 09) QUALITY CODE ( )  
 07) DEPTH TO TOP 3825 10) QUALITY CODE (As interpreted)  
 08) THICKNESS 155 11) QUALITY CODE (As interpreted)

ID: 01) COUNTY 093 02) PERMIT 72 03) SUFFIX O (New Location)  
 04) ELEVATION OF DATUM 1650 05) TYPE OF DATUM B (Barometer)  
 06) FORMATION CODE 475 (Oriskany) 09) QUALITY CODE ( )  
 07) DEPTH TO TOP 3980 10) QUALITY CODE (As interpreted)  
 08) THICKNESS 0 11) QUALITY CODE (As interpreted)

01) COUNTY 093 02) PERMIT 72 03) SUFFIX O (New Location)  
 04) COMPLETION DATE: / /1912  
 05) STATUS C Completed  
 06) FARM NAME Parsons Pulp & Lumber 1  
 07) COMPANY NUMBER  
 08) MINERAL OWNER  
 09) OPERATOR CODE 2984 Parsons Plp&Lmb  
 ANY MISTAKES (Y/N)?

*Cathy*