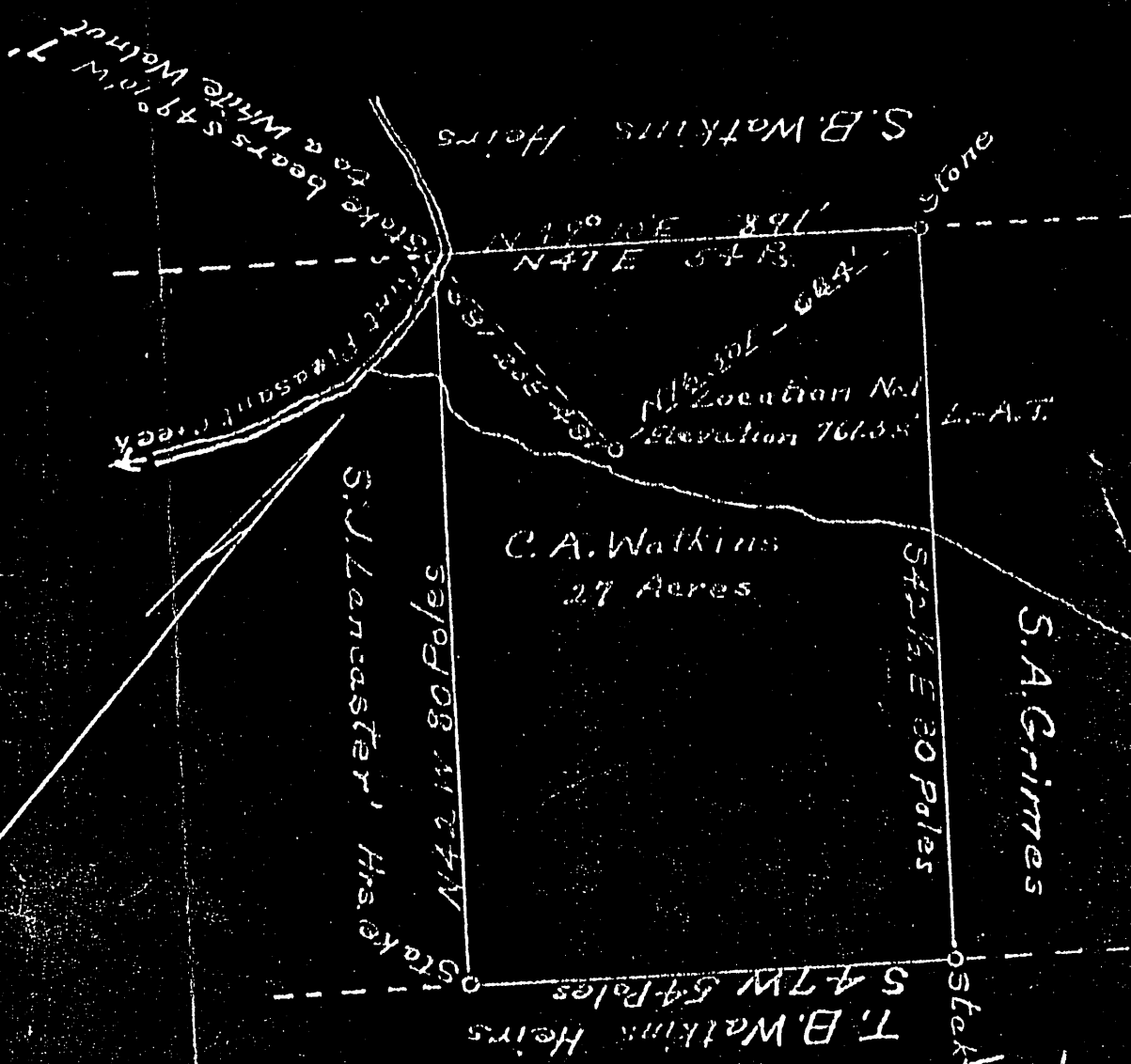


Plat of the proposed location of well No. 1 of the  
 Oakland Oil and Gas Co. of Clarksburg, West Virginia.  
 On the C. A. Watkins, Farm, consisting of 27 Acres  
 Located in Ellsworth District, Tyler County.



Engineer's Certificate.

I, the undersigned, hereby certify that this map is correct  
 and shows all of the information to the best of my knowledge  
 and belief, required by the oil and gas section of the mining  
 laws of West Virginia.

C.C. FITTRO  
 Engineer.

Acknowledged before me a \_\_\_\_\_ day of \_\_\_\_\_  
 Harrison County, this the \_\_\_\_\_ day of \_\_\_\_\_ 19\_\_

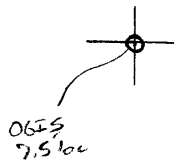
My commission expires on the \_\_\_\_\_ day of \_\_\_\_\_ 19\_\_

Tyler-1

LATITUDE 39° 35'

02, 25, 08

LONGITUDE



T 5 OGIS topo location

7.5' loc	<u>1.03 S</u>	15' loc	<u>1.03</u>
	<u>0.33 W</u>	(calc.)	<u>2.55</u>

Compa: \_\_\_\_\_

Farm \_\_\_\_\_

Quad Paden City 7.5' / N. Martinsville 15'

County Tyler SC

District Ellsworth

WELL LOCATION MAP

File No. 095-1

C.O.P.

*Tyler*  
*Par*

WEST VIRGINIA DEPARTMENT OF MINES

OIL & GAS SECTION

PRELIMINARY DATA SHEET NO. 1

File No. Tyl-0001

Well No. 1

OAKLAND OIL & GAS Company, of 350 Madison Avenue, New York City.

Well No. 1 on the Charles A. Watkins Farm

containing 27 acres. Location Point Pleasant Creek

Ellsworth District, in Tyler County, W. Va.

The surface of the above tract is owned in fee by Charles A. Watkins of New Martinsville, Route # 1 address, and the mineral rights are owned by Charles A. Watkins of Same Address

The oil and gas privileges are held under lease by the above named company, and this well is drilled under permit No. \_\_\_\_\_ issued by the West Virginia Department of Mines, Oil and Gas Section, July 26th, 1929.

Elevation of surface at top of well, 761 ~~feet~~ Barometric.

The number of feet of the different sized casings used in the well.

118 feet 10" size. Wood conductor.

12' feet size, csg. 896 feet 8 1/2" sized csg.

1600 feet 6 5/8" size, csg. \_\_\_\_\_ feet sized csg.

\_\_\_\_\_ feet size, csg. \_\_\_\_\_ feet sized csg.

Two 6 5/8 X 8 1/2 Casing packers of Set at 1526' size, and set at 1542'

Two 2 X 6 5/8 Tubing packers of 2 X 6 5/8 size, set at 1535 and 1556'

\_\_\_\_\_ in. casing perforated at \_\_\_\_\_ feet to \_\_\_\_\_ feet.

2 in. ~~casing~~ <sup>Tubing</sup> perforated at 1580 feet to 1590 feet.

No Coal was encountered at \_\_\_\_\_ feet, thickness \_\_\_\_\_ inches, and at \_\_\_\_\_ feet, thickness \_\_\_\_\_ inches, and at \_\_\_\_\_ feet, thickness \_\_\_\_\_ inches.

No Liners were used, as follows: \_\_\_\_\_ (Give details) \_\_\_\_\_

November 6th, 1929 Date.

OAKLAND OIL & GAS COMPANY

Approved \_\_\_\_\_ Owner.

By James A. Rice Vice President (Title)

Well Commenced Aug. 1st. 1929.  
Well Completed Aug. 28th. 1929.

*File*  
*2.27.23*

COMPLETION DATA SHEET NO. 2

FORMATION RECORD

Ty1-1

NAME	COLOR	CHARACTER	OIL, GAS OR WATER	TOP	BOTTOM	THICKNESS	TOTAL DEPTH	REMARKS
Soil Sand					14			
and shale	Light		Fresh Water	14	290	276		
Freash water			35		35			
Hurry-Up Sand	Light	Hard	Fresh water	290	360	70		
			330					
Shale	Light	Soft		360	430	70		
Coal Blossom Sand			430		430			
and Shale	Light	Soft		430	760	330		
Sand	Light	Hard		760	955	189		
Shale	Dark	Soft		955	1000	45		
Sand	Light	Hard		1000	1020	20		
Shale	Light	Soft		1020	1060	40		
Sandy Lino Sand	White	Soft		1060	1100	40		
Sand	Light	Hard		1100	1105	5		
Salt Sand	Dark	Soft		1105	1240	135		
Shale	Dark	Soft		1240	1255	15		
Sand	White	Hard		1255	1320	65		
Shale	Dark	Soft		1320	1355	35		
Sand	Dark	Hard		1355	1370	15		
Shale	Dark	Soft		1370	1390	20		
Sand	White	Hard		1390	1440	50		
Shale & Shell	Dark	Soft		1440	1505	65		
Maxon Sand	Light	Hard		1505	1600	95		

Gas Pay at Intervals from 1562 to 1595.

Well was not shot at \_\_\_\_\_ feet; well was shot at \_\_\_\_\_ feet.

Fresh water at 35 and 330 feet; ~~fresh water at \_\_\_\_\_ feet~~

Well was producing Gas hole. Initial Open Flow 1,000,000 Cubic Feet  
 Rock Pressure 650 Pounds

November 6th. 1929 Date Approved OAKLAND OIL & GAS COMPANY

*[Signature]* Ice Prest

NOTE: All bottom formations must be noted as indicated above and all key-rocks and oil and gas sands must be recorded under their proper geological names in the district as well as any local names for which strata that may be common to the district.