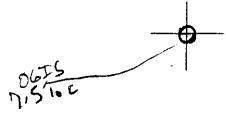


LATITUDE 39° 22' 30"



80° 57' 30"

LONGITUDE

7.5 OGIS topo location

7.5' loc	<u>0.19 S</u>	15' loc	<u>3.07 S</u>
	<u>0.39 W</u>	(calc.)	<u>2.62 W</u>

Well Emerson Well 1

Quad Pennsboro (West Union) ^{15'}

County Tyler WC

District Meade

WELL LOCATION MAP

File No. 095-14

NO well record

L.O.

?

(0)

Ohio oil and Gas company lease on the Emerson Hill farm of 70-1/2 Acres Meade Dist. Tyler Co. W. Va.

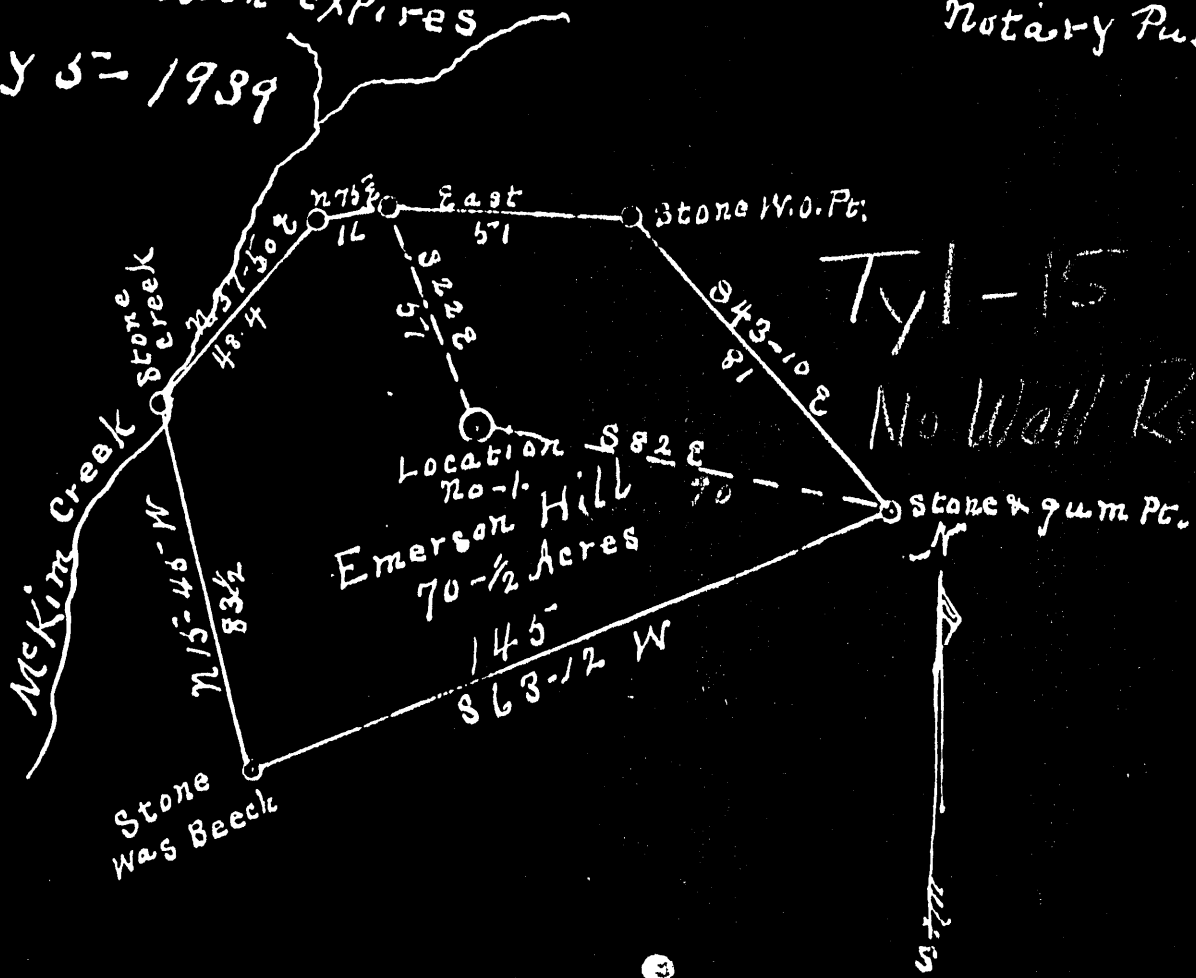
I certify the below is a correct Map and location of well on the Emerson Hill farm of 70-1/2 Acres situated on McKim creek Meade Dist. Tyler Co. W. Va. as surveyed by me Oct 26-1933 for the Ohio oil and Gas company

T. J. Hickel. Eng.

Acknowledged before me a Notary Public for Pleasants county West Virginia on this the 30 day of Oct. 1933.

My commission expires July 3-1939

H. E. Beckman
Notary Public.



Tul-14

no well record

DRILLER'S RECORD

Previously Requested, but NOT
AVAILABLE

DATE: 3-2-92

095
COUNTY

14
PERMIT