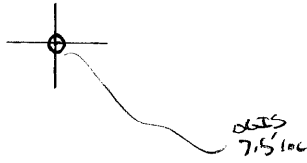


LATITUDE

39° 27' 30"



LONGITUDE

05° 00'

7.5 OGIS topo location

7.5' loc	<u>0.57 S</u>	15' loc	<u>3.45 S</u>
	<u>1.64 W</u>	(calc.)	<u>1.64 W</u>

Company \_\_\_\_\_

Form \_\_\_\_\_

Quad <sup>7.5'</sup> Shirley West Union

County Tyler NC

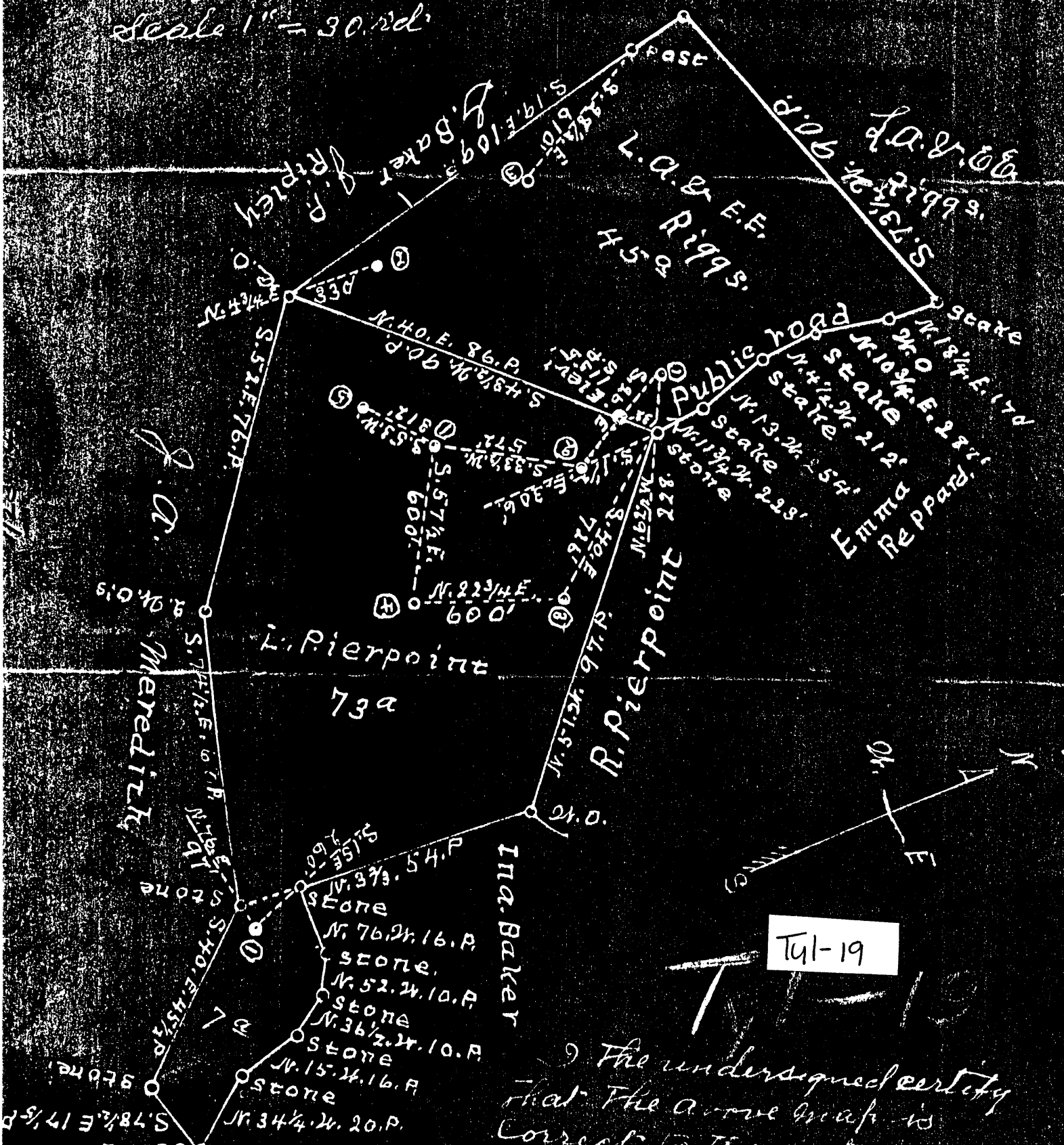
District Centerville

WELL LOCATION MAP

File No. 095-19

This map represents two leases of the American Oil and Development Co in Centerville Dist Tyler Co W. Va. A line well on which is proposed to be drilled as indicated on the map. All other locations marked have long been abandoned.

Scale 1" = 30.00'



Tul-19

I, the undersigned certify that the above map is correct to the best of my skill and judgment and contains all the information necessary for a permit to operate.

J. S. Haught -  
County Surveyor

Subscribed and sworn to before me this the 17th day of July 1934.

My Commission Expires June 10th 1935.

Notary Public

WEST VIRGINIA DEPARTMENT OF MINES

OIL AND GAS DIVISION

PRELIMINARY DATA SHEET NO. 1

File No. Tyl-19

Well No. 1

American Oil Development Company of Sistersville, West Virginia

on the Riggs-Pierpoint Farm  
containing 55 acres,  
and 45 acres acres. Location on farm line

Centerville District, in Tyler County, West Virginia  
L.A. & E.E. Riggs and

The surface of the above tract is owned in fee by Leroy Pierpoint  
of Alma, Tyler County, W. Va. address, and the mineral rights are owned by  
owners of surface  
of \_\_\_\_\_

The oil and gas privileges are held under lease by the above named company, and this well is drilled under permit  
Tyl-19  
No. \_\_\_\_\_ issued by the West Virginia Department of Mines, Oil and Gas Division  
August 6, 1934.  
\_\_\_\_\_ 193\_\_\_\_\_

Elevation of surface at top of well, 1155' Bar. Spirit  
Barometric.

The number of feet of the different sized casings used in the well.  
\_\_\_\_\_ 14 feet 13" size. Wood conductor.  
\_\_\_\_\_ 234 feet 10" size, csg. \_\_\_\_\_ 1275 feet 8 - 1/4" sized csg.  
\_\_\_\_\_ feet \_\_\_\_\_ size, csg. \_\_\_\_\_ feet \_\_\_\_\_ sized csg.  
\_\_\_\_\_ feet \_\_\_\_\_ size, csg. \_\_\_\_\_ feet \_\_\_\_\_ sized csg.  
\_\_\_\_\_ packer of \_\_\_\_\_ size, set at \_\_\_\_\_  
\_\_\_\_\_ packer of \_\_\_\_\_ size, set at \_\_\_\_\_  
\_\_\_\_\_, in casing perforated at \_\_\_\_\_ feet to \_\_\_\_\_ feet.  
\_\_\_\_\_, in casing perforated at \_\_\_\_\_ feet to \_\_\_\_\_ feet.

Coal was encountered at 270 feet, thickness 4 inches, and at 455  
feet; thickness 2 inches; and at \_\_\_\_\_ feet; thickness \_\_\_\_\_ inches.

Liners were used as follows: (Give details) \_\_\_\_\_  
\_\_\_\_\_  
\_\_\_\_\_

October 8, 1934.

Date. \_\_\_\_\_  
Approved \_\_\_\_\_ American Oil Development Company, Owner.  
By \_\_\_\_\_ (TITLE) \_\_\_\_\_

American Oil Development

.....Company

Sistersville, W. Va. ....Address

Well No. 1 .....

COMPLETION DATA SHEET

No. 2

FORMATION RECORD

Name	Color	Character	Oil, Gas or Water	Top	Bottom	Thickness	Total Depth	Remarks
Coal				270	274	4'		
"				455	457	2'		
Big Dunkard Sand	White			1310	1335	25'		
1st Salt Sand	Light			1349	1369	20'		
2nd Salt Sand	"			1410	1465	55'		
3rd Salt Sand	Dark	Hard and Limey		1540	1618	78'		

shot

Well was not shot at .....feet; well was shot at .....feet.

Salt Fresh water at .....feet; salt fresh water at .....feet.

Well was producing hole. dry

October 8, 1934. Date

American Oil Development Company

Approved *John R. Petty* Sup't. Owner

NOTE: All bottom formations must be noted as indicated above and all key-rocks and oil and gas sands must be recorded under their proper geological names in the district as well as any local names commonly used in the district for such strata.

OCT 11 1934



STATE OF WEST VIRGINIA  
DEPARTMENT OF MINES  
OIL AND GAS DIVISION

WELL RECORD

Permit No. TYL-19

Oil or Gas Well Oil Well  
(KIND)

Company American Oil Development Company  
Address Sistersville, West Virginia  
Farm L. Riggs & L. Pierpoint Acres 45&73  
Location (waters) Middle Island Creek  
Well No. I (Farm Line Well) Elev. 1167.56  
District Centerville County Tyler  
The surface of tract is owned in fee by Leroy Pierpont & Gilbert Baker Address Alma, W. Va  
Mineral rights are owned by Same Address \_\_\_\_\_

Drilling commenced September 5, 1934  
Drilling completed October 16, 1934  
Date Shot \_\_\_\_\_ From \_\_\_\_\_ To \_\_\_\_\_  
With \_\_\_\_\_

Open Flow \_\_\_\_\_ /10ths Water in \_\_\_\_\_ Inch  
\_\_\_\_\_ /10ths Merc. in \_\_\_\_\_ Inch  
Volume \_\_\_\_\_ Cu. Ft.  
Rock Pressure \_\_\_\_\_ lbs. \_\_\_\_\_ hrs.  
Oil \_\_\_\_\_ bbls., 1st 24 hrs.  
Fresh water \_\_\_\_\_ feet \_\_\_\_\_ feet  
Salt water 1700 feet \_\_\_\_\_ feet

Casing and Tubing	Used in Drilling	Left in Well	Packers
Size			
16			Kind of Packer _____
18			
10	<u>234</u>		Size of _____
8 1/4	<u>1275</u>		
6 3/8	<u>2050</u>		Depth set _____
5 3/16			
8			Perf. top _____
2			Perf. bottom _____
Liners Used			Perf. top _____
			Perf. bottom _____

CASING CEMENTED \_\_\_\_\_ SIZE \_\_\_\_\_ No. Ft. \_\_\_\_\_ Date \_\_\_\_\_

COAL WAS ENCOUNTERED AT 270 FEET 48 INCHES  
\_\_\_\_\_ FEET \_\_\_\_\_ INCHES 455 FEET 24 INCHES  
\_\_\_\_\_ FEET \_\_\_\_\_ INCHES \_\_\_\_\_ FEET \_\_\_\_\_ INCHES

Formation	Color	Hard or Soft	Top	Bottom	Oil, Gas or Water	Depth Found	Remarks
Coal			270	274			
Coal			455	457			
Big Dunkard			1310	1335			
1st salt sand			1349	1369			
2nd salt sand			1410	1465			
3rd salt sand			1540	1618			
Little Lime			1980	2000			
Pencil Cave			2000	2013			
Broken Lime			2013	2050			
Big Lime			2050	2116 1/2			
Big Injun sand			2116 1/2		Gas	2133	
Total Depth			<u>2179</u>		Oil	2177	

