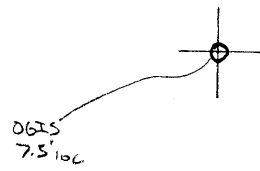


LATITUDE 39°30'

818 S

LONGITUDE



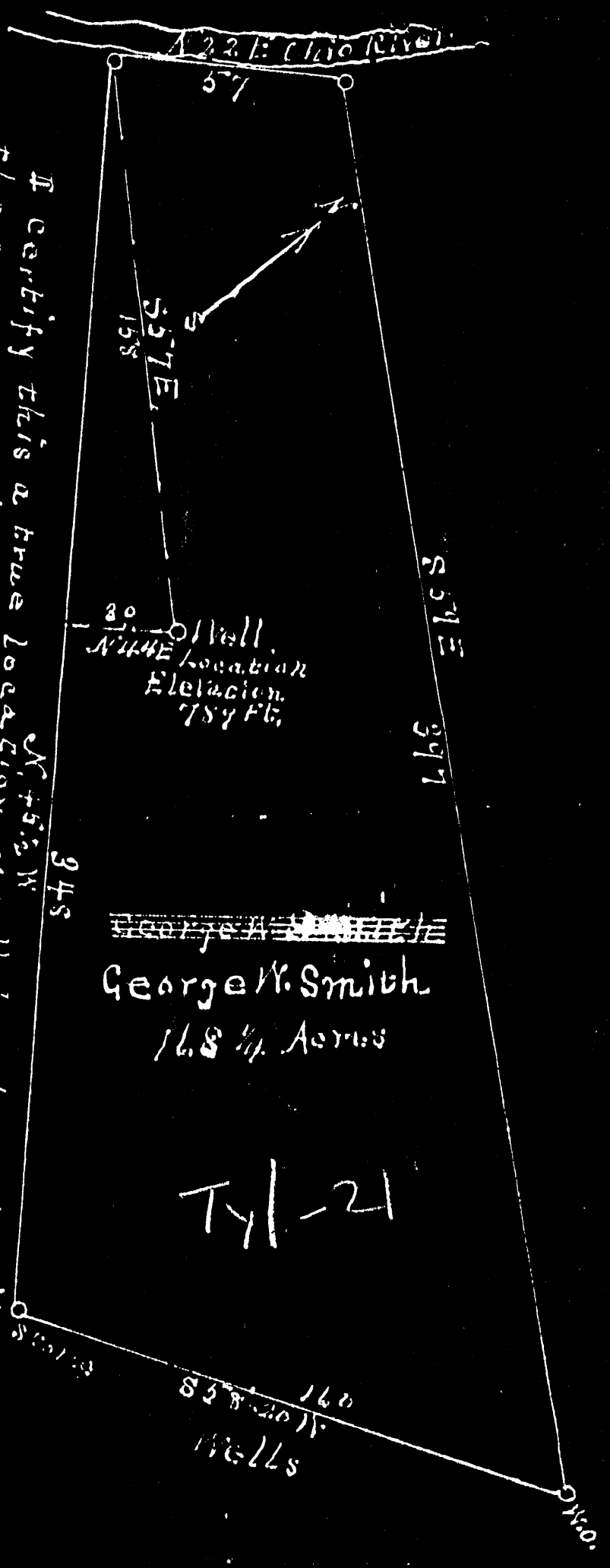
7.5 OGIS topo location

7.5' loc	<u>1.86 S</u>	15' loc	<u>1.86 S</u>
	<u>0.69 W</u>	(calc.)	<u>0.69 W</u>

\_\_\_\_\_  
 \_\_\_\_\_  
 Quad Bears Run 7.5' (St. Marys)  
 County Tyler NC  
 District Union

WELL LOCATION MAP  
 File No. 095-21

The Gale Oil Co. Well location on George W. Smith farm in Union Dist. Tyler Co. West Virginia



I certify this a true location of well for the Gale Oil Co. on the George W. Smith farm Union Dist. Tyler Co. W. Va. J. J. Hickel Engr. Acknowledged before me a Notary Public of Pleasants Co. W. Va. on this 4 day Sept. 1934

My commission expires July 13, 1943.

Notary Public in and for Pleasants County, West Virginia  
 John R. Hinkle

Tyler  
21

# WEST VIRGINIA DEPARTMENT OF MINES

## OIL AND GAS DIVISION

### PRELIMINARY DATA SHEET NO. 1

File No. Tyl-21

Well No. 10

Gale & Leister Company of Newport, Ohio.

on the George Smith Farm

containing 160 acres. Location \_\_\_\_\_

Union District, in Tyler County, West Virginia

The surface of the above tract is owned in fee by George Smith

of Bens Run, West Virginia address, and the mineral rights are owned by

Maud Neuenschwander of Sistersville, W. Va.

The oil and gas privileges are held under lease by the above named company, and this well is drilled under permit No. Tyl-21 issued by the West Virginia Department of Mines, Oil and Gas Division October 1 1935.

Elevation of surface at top of well, 789 Spirit Barometric.

The number of feet of the different sized casings used in the well.

70 feet 10" drive pipe size. Wood conductor.

280 feet 8" size, csg. 780 feet 6 5/8" sized csg.

1150 feet 4 7/8" size, csg. \_\_\_\_\_ feet \_\_\_\_\_ sized csg.

\_\_\_\_\_ feet \_\_\_\_\_ size, csg. \_\_\_\_\_ feet \_\_\_\_\_ sized csg.

\_\_\_\_\_ packer of 4 7/8" size, set at 1153

\_\_\_\_\_ packer of \_\_\_\_\_ size, set at \_\_\_\_\_

\_\_\_\_\_, in casing perforated at \_\_\_\_\_ feet to \_\_\_\_\_ feet.

\_\_\_\_\_, in casing perforated at \_\_\_\_\_ feet to \_\_\_\_\_ feet.

NO Coal was encountered at \_\_\_\_\_ feet, thick ness \_\_\_\_\_ inches, and at \_\_\_\_\_ feet; thickness \_\_\_\_\_ inches; and at \_\_\_\_\_ feet; thickness \_\_\_\_\_ inches.

NO Liners were used as follows: (Give details) \_\_\_\_\_  
\_\_\_\_\_  
\_\_\_\_\_

April 23, 1935 Date.

Approved Gale & Leister, Owner.

By A. W. Leister (TITLE) Member of Firm

APR 24 1935

Gale & Leister Company

COMPLETION DATA SHEET

Newport, Ohio Address

NO. 2

WELL NO. 10 7-1-21 FARM George Smith

FORMATION RECORD

Name	Color	Character	Oil, Gas or Water	Top	Bottom	Thickness	Total Depth	Remarks
First Cow Run	white		Water	560	570	10'		
st Salt Sand	white			750	860	80		
nd Salt sand	white			1020	1100	80		
rd Salt sand	white		Water	1150	1200	50		
Stray	white			1200	1248	48		
Maxon	brown		gas-Oil	1260	1280	20		
Lime	white			1378	1400	22		
Engine	white		Oil-gas	1423	1439	16	1439	

Well was <sup>shot</sup> not shot at 1423 to 1433 <sup>Injun</sup> feet; well was shot at \_\_\_\_\_ feet.

Salt Fresh water at \_\_\_\_\_ feet; salt fresh water at \_\_\_\_\_ feet.

Well was <sup>producing</sup> ~~not~~ hole.

April 23, 1935 Date Approved Gale & Leister Owner

NOTE: All bottom formations must be noted as indicated above and all key-rocks and oil and gas sands must be recorded under their proper geological names in the district as well as any local names commonly used in the district for such strata.

APR 24 1935