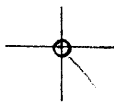


LATITUDE

39°27'30"



OGIS  
7.5' loc

55.08

LONGITUDE

7.5 OGIS topo location

7.5' loc	<u>0.37 S</u>	15' loc	<u>3.25 S</u>
	<u>1.42 W</u>	(calc.)	<u>1.42 W</u>

Agency \_\_\_\_\_

Form \_\_\_\_\_

7.5'  
 Quad Middlebourne (West Union)  
 County Tyler NW  
 District Meade

WELL LOCATION MAP

File No. 095-53

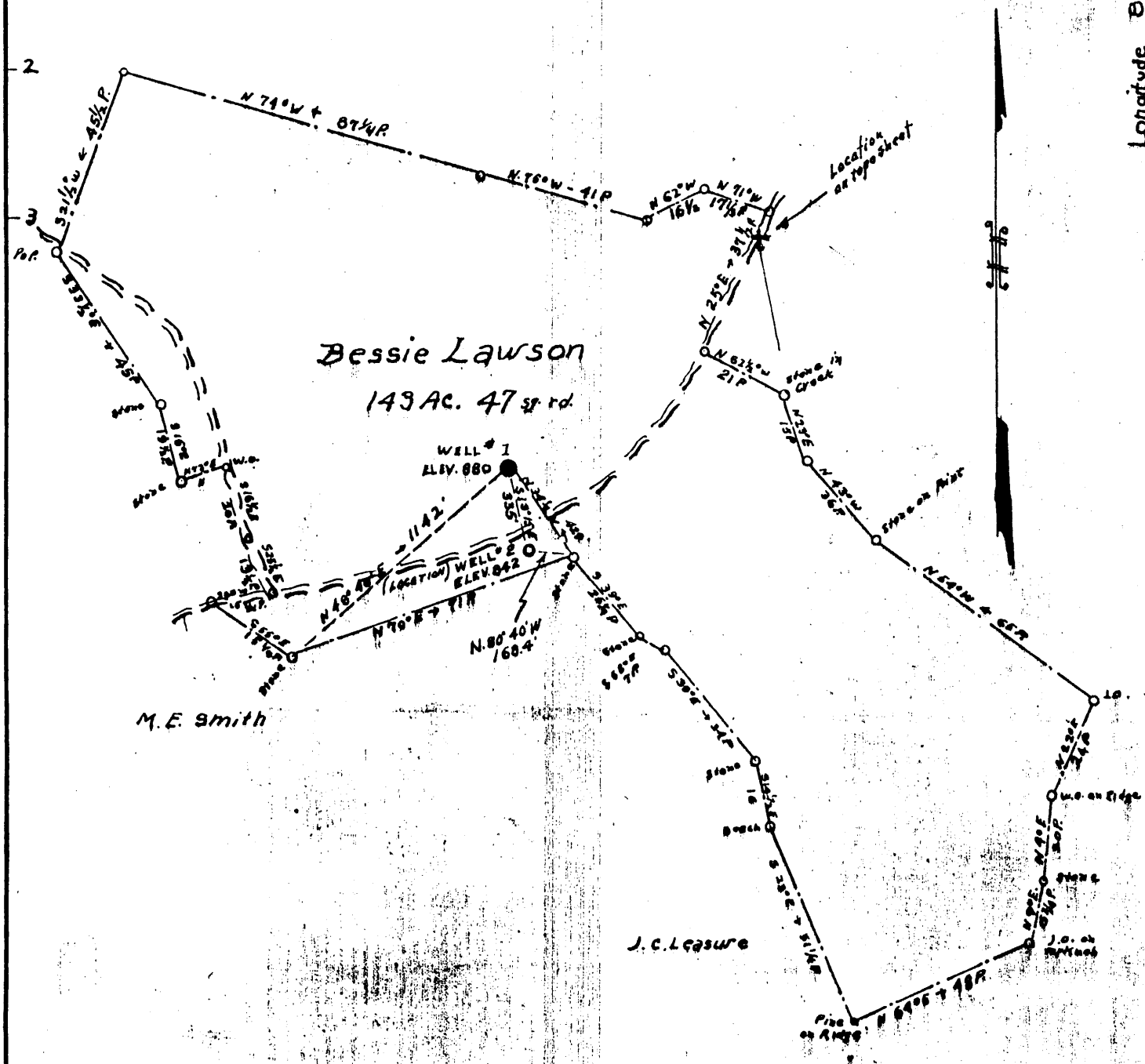
DOP

6-6

(086)

Latitude 39° 30'

Longitude 80° 55'



COMPANY	NEELY OIL & GAS CO.
Address	ST. MARYS, W. VA.
Farm	BESSIE LAWSON
Tract	Acre 143 Lease No.
Well (Farm) No.	2 Serial No.
Elev. (Spirit Level)	842
Quadrangle	WEST UNION (N.W.)
County	TYLER Dist. MEADE
Engineer	Parker E. Peter
Eng. Registration No.	485
File No.	Drwg. No.
Date	Aug 3 1936 Scale 1" = 600'

State of West Virginia  
Department of Mines  
Oil and Gas Division  
Charleston

WELL LOCATION MAP  
File No. TYL - 53

+ Denotes location of well on U.S. Topographic Maps, scale 1 to 62,500 latitude and longitude being represented by border line as shown.

- Denotes one inch spaces on border line of original tracing.

WEST VIRGINIA DEPARTMENT OF MINES

OIL AND GAS DIVISION

PRELIMINARY DATA SHEET NO. 1

File No. Tyl-53 Tyl-53 Well No. 2

Neely Oil & Gas Company of St Marys  
on the Besser Sawson Farm

containing 14 3 acres. Location \_\_\_\_\_

Meade District, in Faylor County, West Virginia

The surface of the above tract is owned in fee by Besser Sawson

of Middlebourne W Va address, and the mineral rights are owned by

Nat Sawson Mrs of Middlebourne W Va

The oil and gas privileges are held under lease by the above named company, and this well is drilled under permit

No. Tyl-52 issued by the West Virginia Department of Mines, Oil and Gas Division

Aug 21 1936

Elevation of surface at top of well, 892' Spirit Barometric.

The number of feet of the different sized casings used in the well.

129 feet 14 size, Wood conductor.

854 feet 10 size, csg. 1592 feet 5 3/16 sized csg.

1202 feet 8 size, csg. \_\_\_\_\_ feet \_\_\_\_\_ sized csg.

1202 feet 6 5/8 size, csg. \_\_\_\_\_ feet \_\_\_\_\_ sized csg.

Wall Pipe packer of 5 3/16 size, set at 1592

\_\_\_\_\_ packer of \_\_\_\_\_ size, set at \_\_\_\_\_

\_\_\_\_\_, in casing perforated at \_\_\_\_\_ feet to \_\_\_\_\_ feet.

\_\_\_\_\_, in casing perforated at \_\_\_\_\_ feet to \_\_\_\_\_ feet.

Coal was encountered at 455 feet, thickness 24 inches, and at \_\_\_\_\_

feet; thickness \_\_\_\_\_ inches; and at \_\_\_\_\_ feet; thickness \_\_\_\_\_ inches.

Liners were used as follows: (Give details) \_\_\_\_\_

\_\_\_\_\_  
\_\_\_\_\_  
\_\_\_\_\_



Date. \_\_\_\_\_

Approved Neely Oil & Gas, Owner.

By Albert Neely (TITLE)

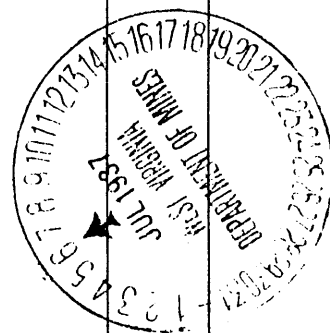
TyL-53

Nechy Oil & Gas Company  
St Manassas Va Address

COMPLETION DATA SHEET  
No. 2  
FORMATION RECORD

Well No. ....

Name	Color	Character	Oil, Gas or Water	Top	Bottom	Thickness	Total Depth	Remarks
sand CR	white	hard	none	803	823	20		
gas sand	"	"	"	905	1025	120		
Dult Sand	"	"	show foil	1120	1130	10		
" Sand	"	"	"					
" "			water	1142	1205	63		
" "	Broken							
" "		hard	none	1211	1287	76		
main S		"	"	1542	1582	40		
Big Sme		"		1582	1626			
Big Inj		soft	gas	1626	1676	50		



shot  
Well was not shot at ..... feet; well was shot at ..... feet

Salt  
Fresh water at 1145 ..... feet; salt  
fresh water at ..... feet

producing  
Well was gas hole.  
day

July 3 1937  
Date

Approved: Nechy Oil & Gas Co  
Owner

NOTE: All bottom formations must be noted as indicated above and all key-rocks and oil and gas sands must be recorded under their proper geological names in the district as well as any local names commonly used in the district for such strata.

28971