

Latitude 39° 27'

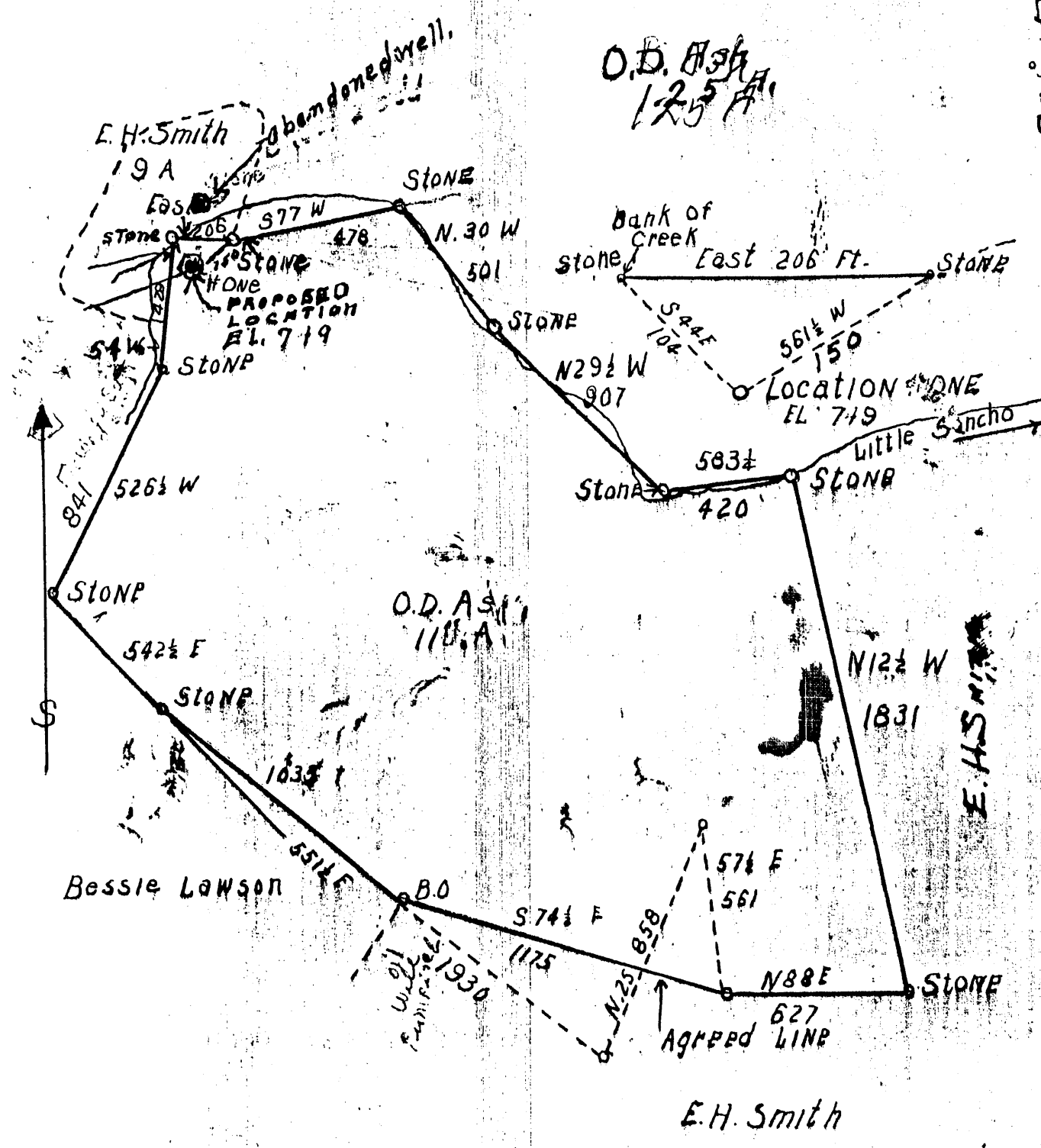
Longitude 80° 56'

0 1 2 3

1

2

3



Quadrangle Middlebourne 7.5  
Dist. - Meade

E.H. Smith

Company W.H. KEARNS  
 Address 314 MAIN STREET, New Martinsburg  
 Farm O.D. ASH  
 Tract ONE Acres 110± Lease No. 1  
 Well (Farm) No. 1 Serial No. \_\_\_\_\_  
 Elevation (Spirit Level) 719  
 Quadrangle \_\_\_\_\_  
 County TYLER District MEAD  
 Engineer F.M. Parsons  
 Engineer's Registration No. 203  
 File No. \_\_\_\_\_ Drawing No. \_\_\_\_\_  
 Date OCT. 3. 1936 Scale 1 INCH = 500 FEET

STATE OF WEST VIRGINIA  
 DEPARTMENT OF MINES  
 OIL AND GAS DIVISION  
 CHARLESTON

### WELL LOCATION MAP

FILE NO. TYL-57  
DRILLING CANCELED

+ Denotes location of well on United States Topographic Maps, scale 1 to 62,500, latitude and longitude lines being represented by border lines as shown.

- Denotes one inch spaces on border line of original tracing.

# DRILLER'S RECORD

Previously Requested, but NOT  
AVAILABLE

DATE: 3-2-92

*drilling cancelled*

095  
COUNTY

57  
PERMIT