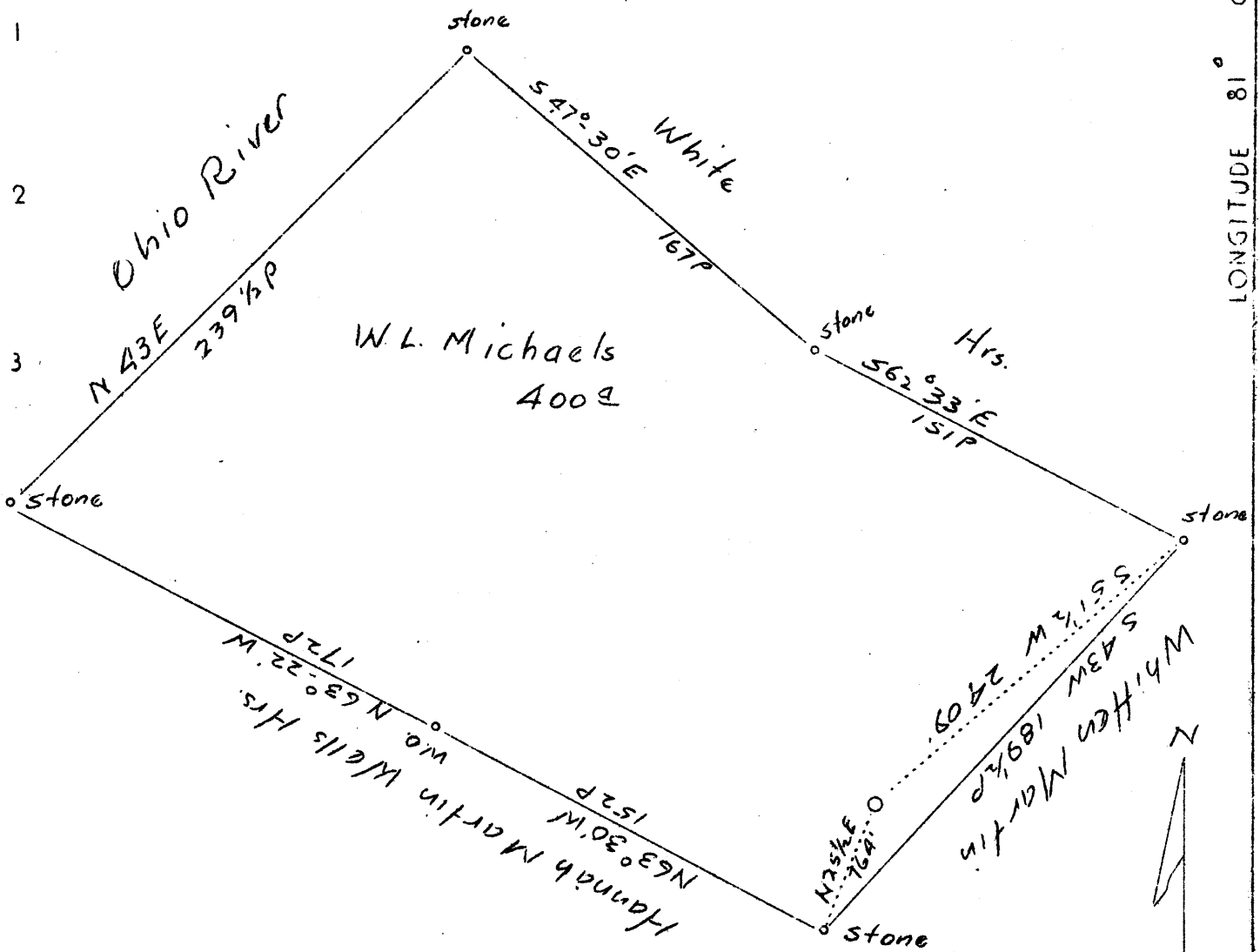


LATITUDE 39° 30'

LONGITUDE 81° 00'



3.23 8
1 8.

Company The Crawford Oil & Gas Co.
 Address Meadville, Pa.
 Farm W. L. Michaels
 Tract Acres 400 Lease No. _____
 Well (Farm) No. One Serial No. _____
 Elevation (Spirit Level) 927
 Quadrangle St. Marys N.E.
 County Tyler District Union
 Engineer J. S. Haught
 Engineer's Registration No. Co. Surv.
 File No. _____ Drawing No. _____
 Date 1-8-37 Scale 1" = 1 s.

STATE OF WEST VIRGINIA
 Department of Mines
 OIL AND GAS DIVISION
 Charleston

WELL LOCATION MAP
 File No. TYL-66

+ Denotes location of well on U.S. Topographic Maps, scale 1 to 62,500, latitude and longitude lines being represented by border lines as shown.

— Denotes one inch spaces on border line of original tracing.

