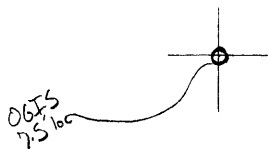


LATITUDE

39° 30'

095-71

LONGITUDE



7.5 OGIS topo location

7.5' loc	<u>0.53 S</u>	15' loc	<u>0.53 S</u>
	<u>1.58 W</u>	(calc.)	<u>3.81 W</u>

Company _____

Farm _____

Quad Bess Ann (St. Marys)

County Tyler NE

District Union

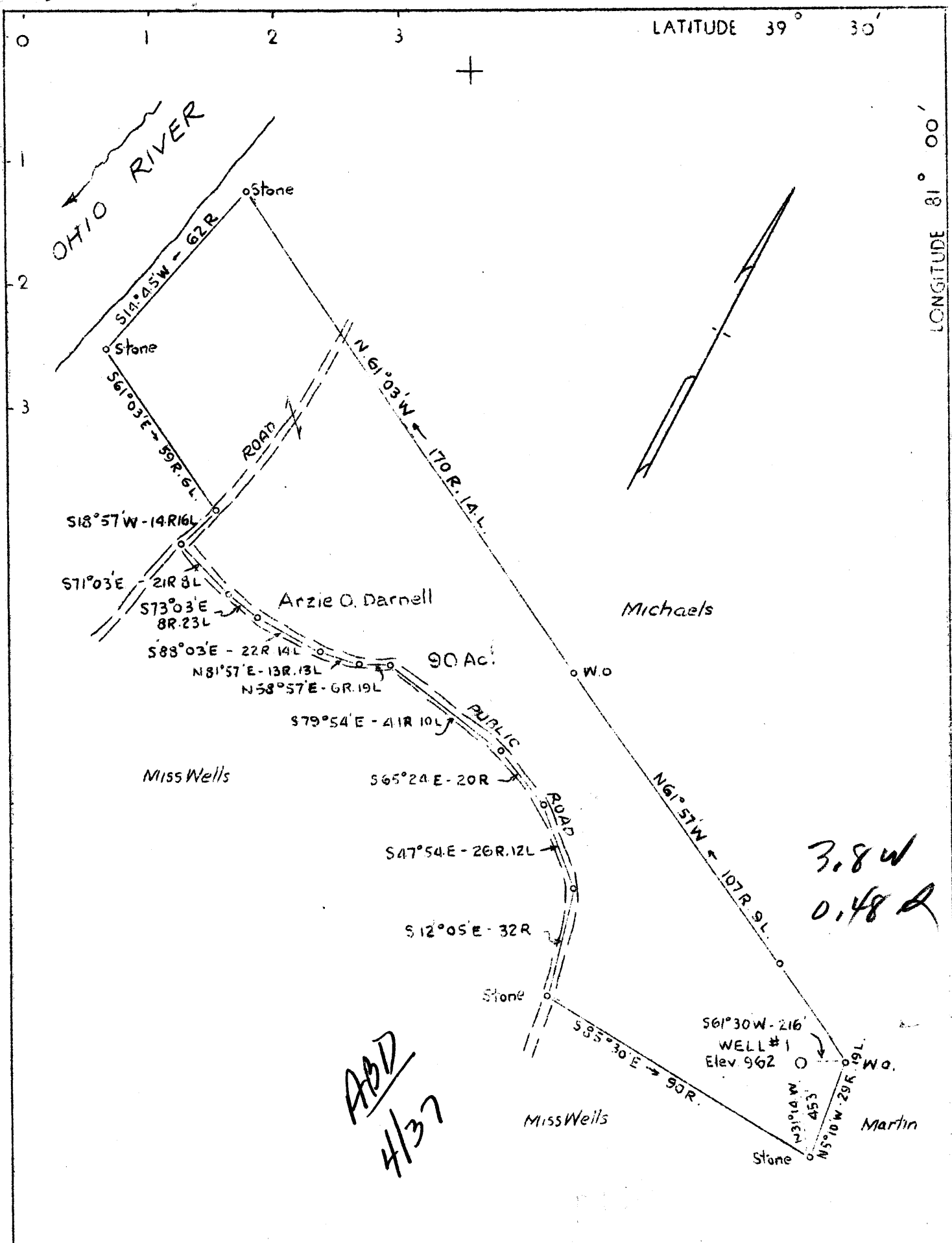
WELL LOCATION MAP

File No. 095-71

plugged 5/22/1937

LATITUDE 39° 30'

LONGITUDE 81° 00'



ADD
4/37

3.8W
0.48R

IVE

Company Neely Oil & Gas Co.
 Address St. Marys, W. Va.
 Farm Arzie O. Darnell
 Tract 1 Acres 90 Lease No. _____
 Well (Farm) No. 1 Serial No. _____
 Elevation (Spirit Level) 962
 Quadrangle St. Marys, W. Va. - O. (N.E.)
 County Tyler District Union
 Engineer Parker E. Peters
 Engineer's Registration No. 405
 File No. _____ Drawing No. _____
 Date 3-25-37 Scale 1" - 600'

STATE OF WEST VIRGINIA
 Department of Mines
 OIL AND GAS DIVISION
 Charleston

WELL LOCATION MAP
 File No. TYL. 71

+ Denotes location of well on U.S. Topographic Maps, scale 1 to 62,500 latitude and longitude lines being represented by border lines as shown.

— Denotes one inch spaces on border line of original tracing.

Albert Neeley Company

COMPLETION DATA SHEET

St. Marys W. Va. Address

No. 2

WELL NO. 1 Ty-71 FARM Wells

FORMATION RECORD

Name	Color	Character	Oil, Gas or Water	Top	Bottom	Thickness	Total Depth	Remarks
Conductor					16'		16'	
10' pipe				160'				
Red Rock	Red			200'	250'	50'	250'	
White Slate	White			250'	300'	50'	300'	
Red Rock	Red			300'	350'	50'	350'	
Lime	White			350'	400'	50'	400'	
Black Lime	Black			400'	425'	25'	425'	
Slate	Grey			425'	450'	25'	450'	
Slate	White	White		450'	500'	50'	500'	
Black Slate	Black			500'	525'	25'	525'	
Sand				525'	560'	35'	560'	
Slate	Black			560'	600'	40'	600'	
Sand				600'	635'	35'	635'	
Lime				635'	695'	60'	695'	
Big Red Rock				695'	770'	75'	770'	
White Slate				770'	775'	5'	775'	
Red Rock	Red			775'	785'	10'	785'	
Lime				785'	795'	10'	795'	
Slate				795'	837'	42'	837'	
Pink rock				837'	850'	13'	850'	
Lime				850'	860'	10'	860'	
Pink Rock				860'	880'	20'	880'	
Slate				880'	900'	10'	900'	
Red Rock				900'	940'	40'	940'	
8 1/2 Casing				940'	970'	30'	970'	
Sandy Lime				970'	1037'	67'	1037'	
Slate				1037'	1130'	93'	1130'	
White Lime				1130'	1160'	30'	1160'	
Sand				1160'	1230'	70'	1230'	
Slate				1230'	1260'	30'	1260'	
1230 Sand				1260'	1326'	66'	1326'	
Slate				1326'	1386'	60'	1386'	
Sand				1386'	1400'	14'	1400'	
Slate				1400'	1430'	30'	1430'	
Sand				1430'	1490'	60'	1490'	
Black Slate				1490'	1610'	120'	1610'	
Sand				1610'	1620'	10'	1620'	
Slate				1620'	1645'	25'	1645'	
Maxion Sand				1645'	1660'	15'	1660'	
Slate				1660'	1737'	17'	1737'	
Big Lime				1737'	1770'	33'	1770'	
Kener				1770'	1780'	10'	1780'	
Slate				1780'	1900'	120'	1900'	
Injin							1911'	
Total Depth								

Well was not shot at feet; well was shot at feet.

Fresh water at feet; fresh water at feet.

Well was producing hole.
dry

April 11, 1937 Date

Approved Albert Neeley Owner

NOTE: All bottom formations must be noted as indicated above and all key-rocks and oil and gas sands must be recorded under their proper geological names in the district as well as any local names commonly used in the district for such strata.

