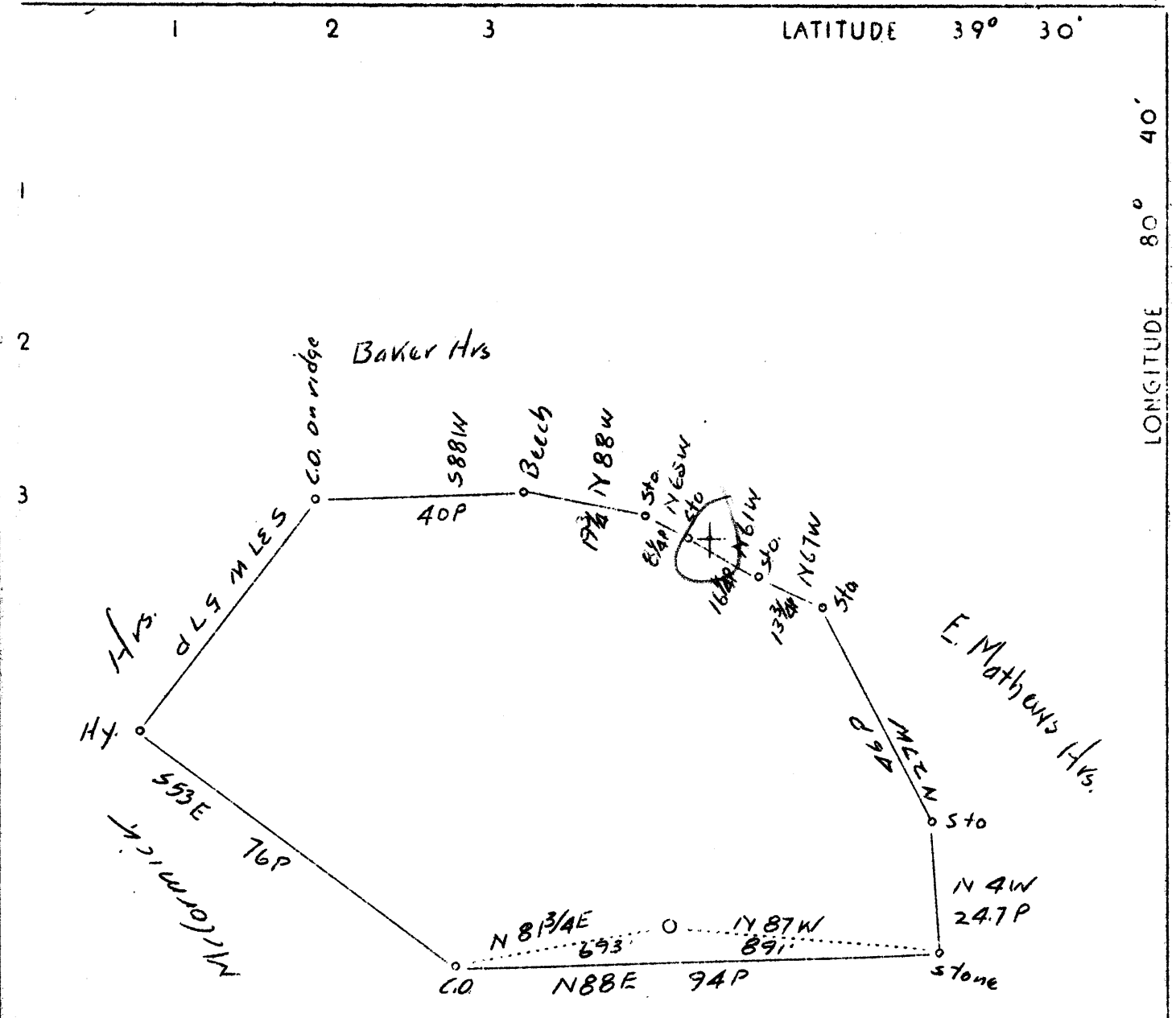


M



Joseph McCormick Hrs.



2.97 W
 3.45 2

Company S.J. McIntyre & H. R. Wright
 Address Alvy
 Farm Andrew Mathews
 Tract 1 Acres 62 Lease No. _____
 Well(Farm) No. 2 Serial No. _____
 Elevation(Spirit Level) 9711
 Quadrangle Center Point (nw)
 County Tyler District McElroy
 Engineer J. S. Haight
 Engineer's Registration No. So. Surv.
 Date 4-13-37 Scale 1" = 30 rods
 File No. _____ Drawing No. _____

STATE OF WEST VIRGINIA
 Department of Mines
 OIL AND GAS DIVISION
 Charleston

WELL LOCATION MAP
 File No. TYL-72

+ Denotes location of well on U. S. Topographic Maps, scale 1 to 62,500 latitude and longitude lines being represented by border lines as shown

- Denotes one inch spaces on border line of original tracing.

WEST VIRGINIA DEPARTMENT OF MINES

OIL AND GAS DIVISION

WELL RECORD

Permit No. Tyl-72

Oil Well

Centerpoint Quad.

CASING & TUBING

Company	H.R.Wright & S.J. McIntyre	13	14
Address	Alvy, West Virginia	10	259
Farm	Matthews Heirs Acres 60	8 1/4	1295
Location	Indian Creek	6 5/8	2028
Well No.	3 Elev. 971'	2	2028
District	McElroy County Tyler		2200
Surface	Carl Pitts et al, Alvy, W.Va.		
Mineral	S.P. Oil Co., Pittsburgh etc .		
Drilling	Commenced May 18, 1937		
	Completed June 16, 1937		
Date Shot	June 23, 1937		Depth 2207
Volume	60,000 Cu. Ft.		
Rock Press.	55# 1 hrs.		
Oil	1/2 bbls. 1st 24 hrs.		

Formation Color Hor S TOP Base Result Formation Color Hor S TOP Base Result

Formation	Color	Hor	S	TOP	Base	Result	Formation	Color	Hor	S	TOP	Base	Result
Coal				310	312								
P. Coal				779	780								
Little Dunk.				1040	1085								
B. Dunkard				1185	1225								
Gas Sand				1285	1345								
1st Salt Sand				1380	1449								
2nd Salt Sand				1540	1635								
Maxon				1860	1880								
Little Lime				1985	2000								
Pencil Cave				2000	2008	Gas							
Blue Monday				2008	2034	2105-							
Big Lime				2034	2085	2116							
Big Injun				2085	2209								
TOTAL DEPTH					2234	Oil							
						2209							
						salt							
						Water							
						2 bbl.							

2008
971
1037

971
312
780
1085
1225
1345
1449