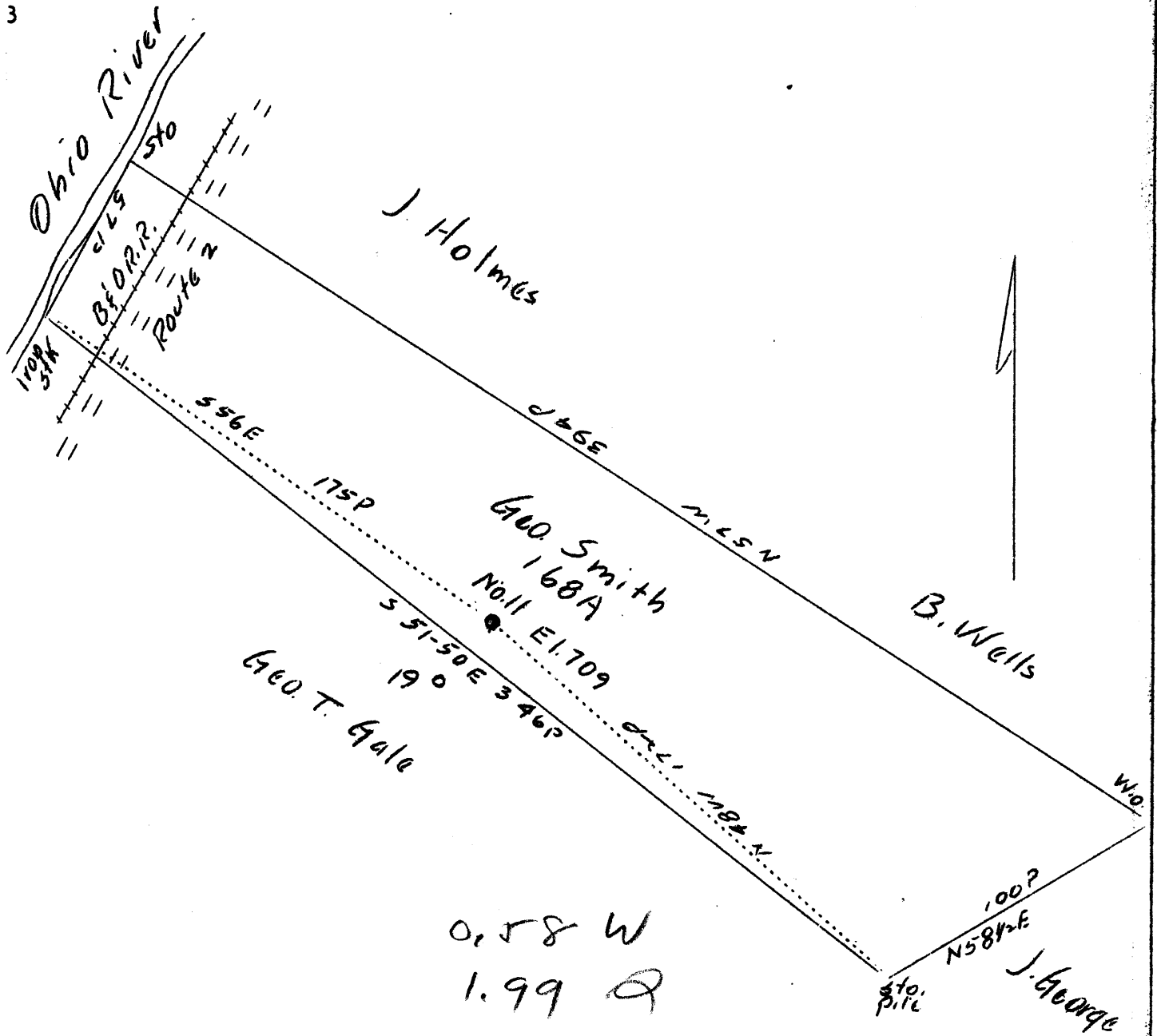


LATITUDE 39° 30'

LONGITUDE 81° 05'



Company	Gale Oil Co.
Address	Newport, Ohio
Farm	Geo. Smith
Tract	Acres 168 Lease No.
Well (Farm) No.	11 Serial No.
Elevation (Spirit Level)	709'
Quadrangle	St. Marys (NC)
County	Tyler District Union
Engineer	Jno. Triplett
Engineer's Registration No.	
File No.	Drawing No.
Date	May 26, 1937 Scale 50 P. to 1"

STATE OF WEST VIRGINIA
 Department of Mines
 OIL AND GAS DIVISION
 CHARLESTON

WELL LOCATION MAP
 File No. TYL-75

+ Denotes location of well on United States Topographic Maps, scale 1 to 62,500, latitude and longitude lines being represented by border lines as shown.

— Denotes one inch spaces on border line of original tracing.

