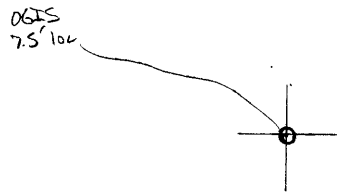


LATITUDE 39°30'

5°18'

LONGITUDE



7.5 OGIS topo location

7.5' loc	<u>1,98 S</u>	15' loc	<u>1,98 S</u>
	<u>0,57 W</u>	(calc.)	<u>0,57 W</u>

Company - \_\_\_\_\_

Farm \_\_\_\_\_

Quad Bens Run 7.5' (St. Marks)

County Tyler NC

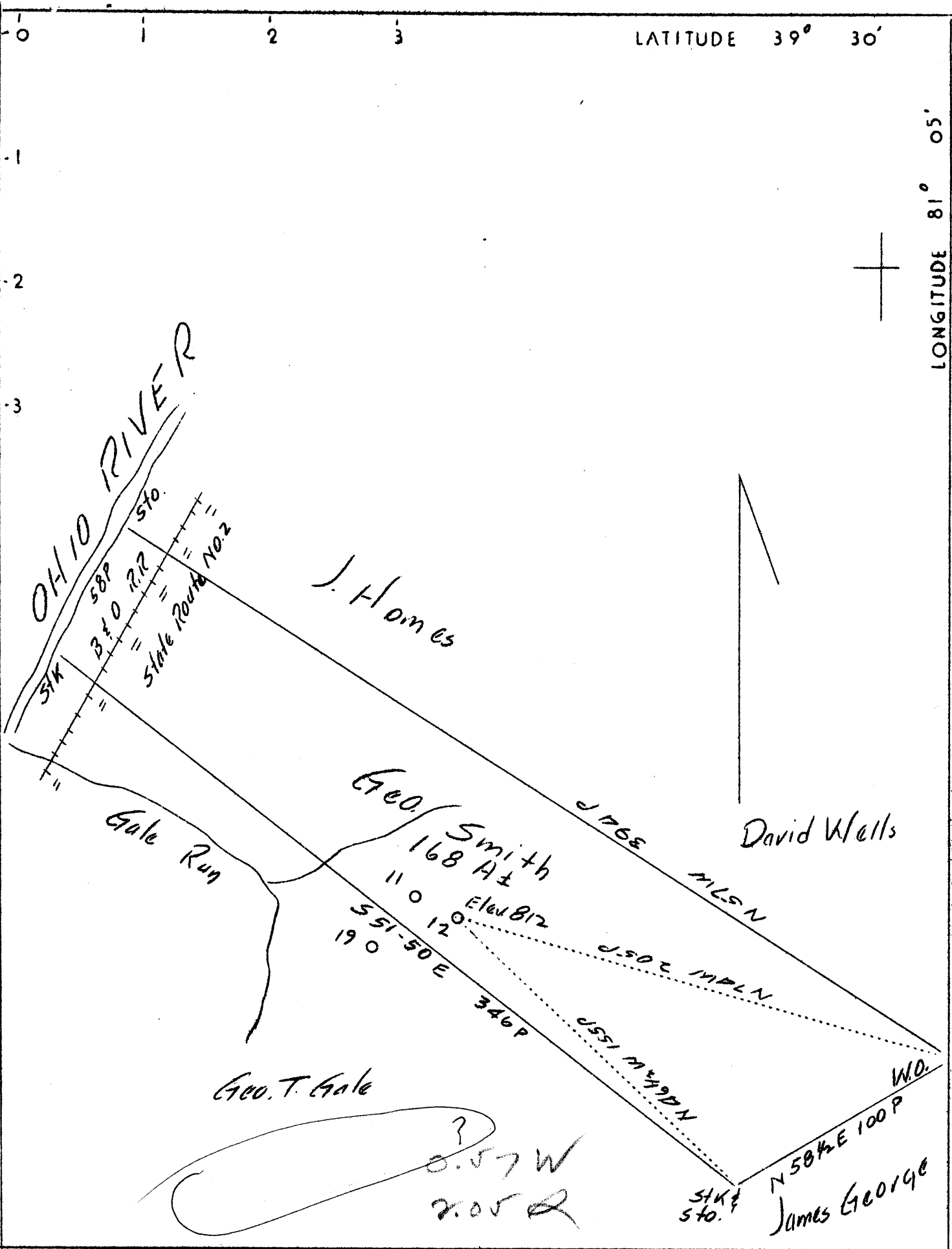
District Union

WELL LOCATION MAP

File No. 095-78

LATITUDE 39° 30'

LONGITUDE 81° 05'



Company	Gale Oil Co.
Address	Newport, Ohio
Farm	Geo Smith
Tract	Acres 168 Lease No.
Well (Farm) No.	12 Serial No.
Elevation (Spirit Level)	812
Quadrangle	St. Marys <b>NC</b>
County	Tyler District Union
Engineer	Jno. Triplett
Engineer's Registration No.	
File No.	Drawing No.
Date	July 12, 1937 Scale 1"-50 P.

STATE OF WEST VIRGINIA  
 Department of Mines  
 OIL AND GAS DIVISION  
 CHARLESTON

WELL LOCATION MAP  
 File No. TYL-78

+ Denotes location of well on United States Topographic Maps, scale 1 to 62,500, latitude and longitude lines being represented by border lines as shown.

— Denotes one inch spaces on border line of original tracing.



STATE OF WEST VIRGINIA  
DEPARTMENT OF MINES  
OIL AND GAS DIVISION

WELL RECORD

Quadrangle \_\_\_\_\_  
Permit No. Tyler-78-P

Oil or Gas Well Oil  
(KIND)

Company Gale and Leister  
Address Newport, Ohio  
Farm Maude Neuenschwander Heirs Acres 168  
Location (waters) \_\_\_\_\_  
Well No. 12 Elev. 812'  
District Union County Tyler  
The surface of tract is owned in fee by \_\_\_\_\_  
Address \_\_\_\_\_  
Mineral rights are owned by Maude Neuenschwander Hrs.  
Address \_\_\_\_\_  
Drilling commenced November 4, 1939  
Drilling completed November 29, 1939  
Date Shot 11/29/39 From 1377' To 1383'  
With \_\_\_\_\_  
Open Flow 10ths Water in \_\_\_\_\_ Inch  
10ths Merc. in \_\_\_\_\_ Inch  
Volume \_\_\_\_\_ Cu. Ft.  
Back Pressure \_\_\_\_\_ lbs. \_\_\_\_\_ hrs.  
\_\_\_\_\_ Two. \_\_\_\_\_ bbls., 1st 24 hrs.  
Fresh water 34 feet \_\_\_\_\_ feet  
Hot water 1020 feet \_\_\_\_\_ feet

Casing and Tubing	Used in Drilling	Left in Well	Packers
Size			
16			Kind of Packer _____
13			
10	88 ft.		Size of _____
8 1/4	347 ft.		
6 1/2			Depth set _____
5 3/16	100 ft.		
4-7/8	700 ft.		Perf. top _____
2			Perf. bottom _____
Liners Used			Perf. top _____
			Perf. bottom _____

CASING CEMENTED \_\_\_\_\_ SIZE \_\_\_\_\_ No. Ft. \_\_\_\_\_ Date \_\_\_\_\_  
COAL WAS ENCOUNTERED AT \_\_\_\_\_ FEET \_\_\_\_\_ INCHES  
\_\_\_\_\_ FEET \_\_\_\_\_ INCHES \_\_\_\_\_ FEET \_\_\_\_\_ INCHES  
\_\_\_\_\_ FEET \_\_\_\_\_ INCHES \_\_\_\_\_ FEET \_\_\_\_\_ INCHES

Formation	Color	Hard or Soft	Top	Bottom	Oil, Gas or Water	Depth Found	Remarks
Gravel		soft		84			
bed Rock	red	soft	84	88			
Blue Rock	blue	soft	88	93			10" pipe
Lime	black	hard	93	130			
Shale	blue	soft	130	225			
Lime	black	hard	225	230			
Shale	blue	soft	230	240			
Lime	black	hard	240	255			
pink Rock	pink	soft	255	265			
Lime	black	hard	265	275			
pink Rock	pink	soft	275	347			8" pipe
Blue Rock	blue	hard	347	362			
bed Rock	red	soft	362	400			
Blue Shale	blue	medium	400	410			
bed Rock	red	hard	410	450			
Lime	black	hard	450	455			
Shale	blue	medium	455	465			
Lime	black	hard	465	480			
Shale	blue	soft	480	505			
pink Rock	pink	soft	505	525			
ow Run	dark	hard	525	535			
Lime	black	medium	535	565			more shale than sand
Shale	blue	soft	565	580			
Lime	black	hard	580	600			
Shale	dark	soft	600	633			
Shale	blue	hard	633	685			
Lime	black	hard	685	695			
Shale	blue	soft	695	700			
Lime	black	hard	700	710			
Shale	white	soft	710	715			
nd	white	hard	715	745			
Shale	blue	soft	745	755			
nd	white	medium	755	822			4-7/8 pipe @ 822-1/2
		(OVER)					

Ty1-78

Formation	Color	Hard or Soft	Top	Bottom	Oil, Gas or Water	Depth Found	Remarks
Line	gray	hard	822	860			
Shale	black	soft	860	870			
Line	blue	hard	870	875			
Shale	black	soft	875	900			
Slate	gray	soft	900	905			
Salt Sand	white	hard	905	950			
Line	blue	hard	950	970			Gas - 922
Shale	gray	soft	970	980			
Line	gray	hard	980	1000			
Shale	black	soft	1000	1020			
Sand 3rd Salt	white	medium	1020	1080			Gas - 1063
Shale	blue		1080	1085			
Sand	white		1085	1193			
Slate			1193	1220			
Sand Maxon			1220	1250			Show of oil at 1240
Shale	black		1250	1255			
Line	black	hard	1255	1265			
Shale	black	soft	1265	1310			
Line	sandy	hard	1310	1345			
Sand	white	hard	1345	1360			Oil - 1346
Line	gray	hard	1360	1377			Oil
Sand	white	hard	1377	1383			
			TOTAL DEPTH - 1383				

Date July 11, 1952

APPROVED Geo. H. Gale, Owner

By \_\_\_\_\_ (Title)