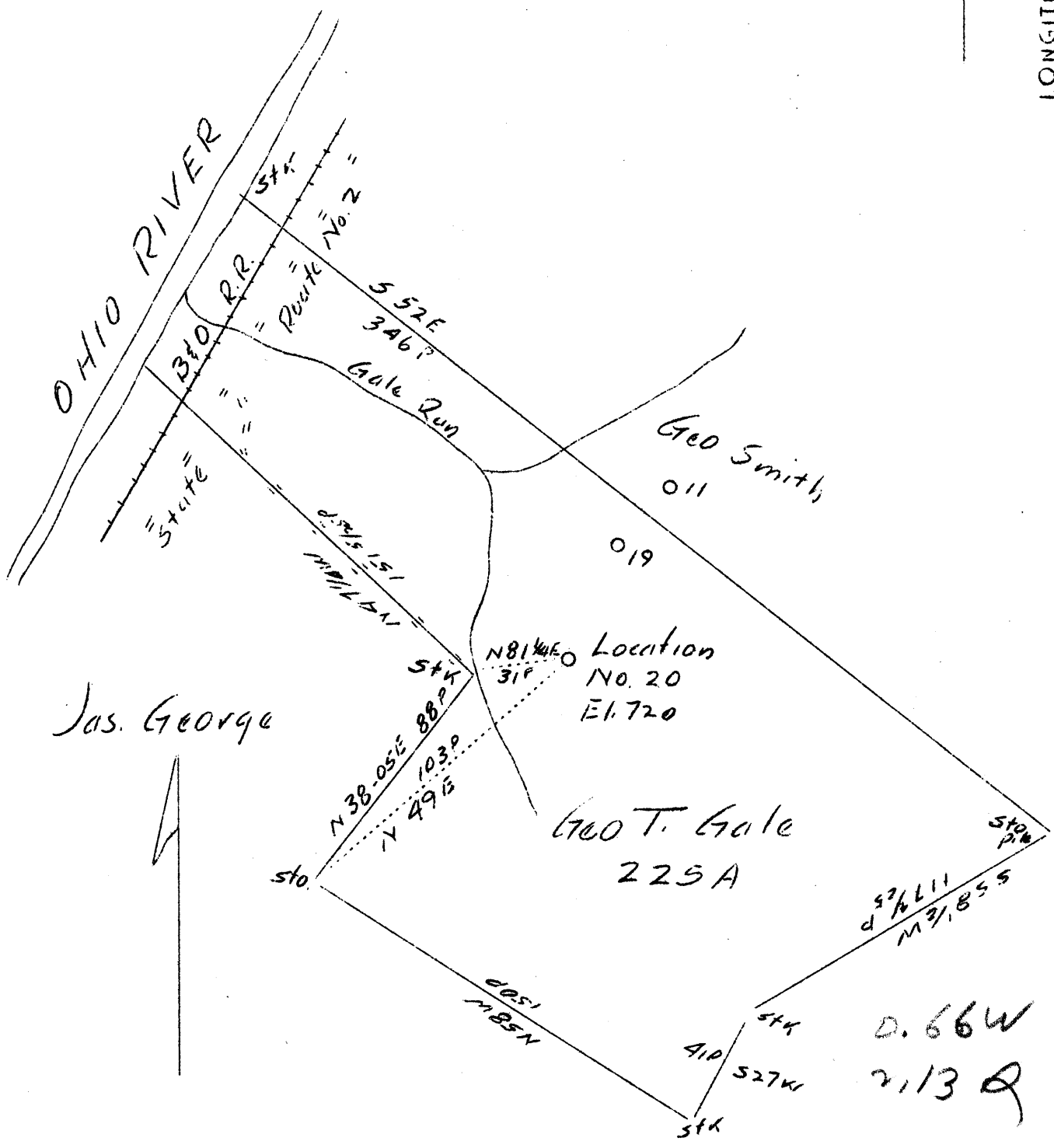


LATITUDE 39° 30'

LONGITUDE 81° 05'



Company	Gale Oil Co.
Address	Newport, Ohio
Farm	Geo. T. Gale
Tract	Acres 225 Lease No.
Well (Farm) No.	20 Serial No.
Elevation (Spirit Level)	720
Quadrangle	St. Marys (NO)
County	Tyler District Union
Engineer	Jno. Triplett
Engineer's Registration No.	
File No.	Drawing No.
Date	Aug. 4, 1937 Scale 1"-50P.

STATE OF WEST VIRGINIA
 Department of Mines
 OIL AND GAS DIVISION
 CHARLESTON

WELL LOCATION MAP
 File No. TYL-80

+ Denotes location of well on United States Topographic Maps, scale 1 to 62,500, latitude and longitude lines being represented by border lines as shown.

— Denotes one inch spaces on border line of original tracing.

WEST VIRGINIA DEPARTMENT OF MINES

OIL AND GAS DIVISION

W E L L R E C O R D

Oil Well

CASING & TUBING

Permit No. Tyl.80

St. Marys Quad.

Company Gale Oil Co.
 Address Newport, Ohio
 Farm Dr. G.T. Gale Acres 225
 Location Not given
 Well No. 20 Elev. Not given.
 District Union County Tyler
 Surface Dr. G.T. Gale, Bens Run, W. Va.
 Mineral Dr. G.T. Gale, Newport, Ohio
 Drilling Commenced Aug. 9, 1937
 Completed Sept. 10, 1937
 Date Shot Sept. 1, 1937 Depth 1336
 Volume
 Rock Press.
 Oil

10 38
 8 1/2 360
 6 5/8 848
 2 1507

720'

FORMATION Color ^{Hor} TOP Base Result FORMATION Color ^{Hor} TOP Base Result

Clay			32		Lime	Black	942	965
Sand			32	55	Shale	White	965	990
Clay			55	65	Slate	Black	990	1015
Lime			65	85	Slate	White	1015	1020
Rock	Red		85	100	Slate	Black	1020	1035
Lime	Black		100	110	Slate	White	1035	1045
Rock	Red		110	145	Lime	Black	1045	1050
Slate	Black		145	185	Slate	White	1050	1065
Lime	Black		185	195	Lime	Black	1065	1070
Rock	Red		195	210	Sand part		1070	1087
Lime	Black		210	225	Shale	Black	1087	1095
Shale	Blue		225	235	Lime	Black	1095	1107
Rock	Red		235	240	Shale	Black	1107	1128
Shale	Gray		240	280	Sand 2nd Salt		1128	1170
Rock	Red		280	296	Slate	Black	1170	1195
Shale			296	320	Sand 3rd Salt		1195	1295
Lime	Black		320	340	Slate	Black	1295	1310
Shale	Black		340	350	Lime	Black	1310	1336
Shale	Blue		350	370	Sand-Maxon		1336	1365
Lime	Black		370	390	Lime part	Black	1365	1385
Sand			390	395	Sand		1385	1395
Rock	Red		395	400	Lime part	Black	1395	1400
Lime	Black		400	415	Lime	White	1400	1453
Rock	Red	H	415	479	Sand part	Black	1453	1470
Sandy Shale			479	489	Shale	Sandy	1470	1498
Shale	White		489	499	Sand -Injun		1498	1507
Rock	Red		499	510				
Slate	Blue		510	550				
Rock	Red		550	585				
Lime	Blue		585	605				
Slate	White		605	640				
Slate	Black		640	650				
Rock	Red		650	660				
Slate	Blue	H	660	685				
Lime	Blue	H	685	700				
Slate	Blue		700	730				
Slate	Black		730	763				
Rock	Red		763	773				
Rock	Lime		773	790				
Slate	Blue		790	800				
Lime	Black		800	815				
Shale	Blue		815	835				
Lime			835	848				
Sand		H	848	884				
Shale	Black		884	894				
Sand			894	935				
Shale	Black		935	942				

1453
 720
 733

RECEIVED
OCT 20 1937
FEDERAL BUREAU OF INVESTIGATION
DEPARTMENT OF JUSTICE