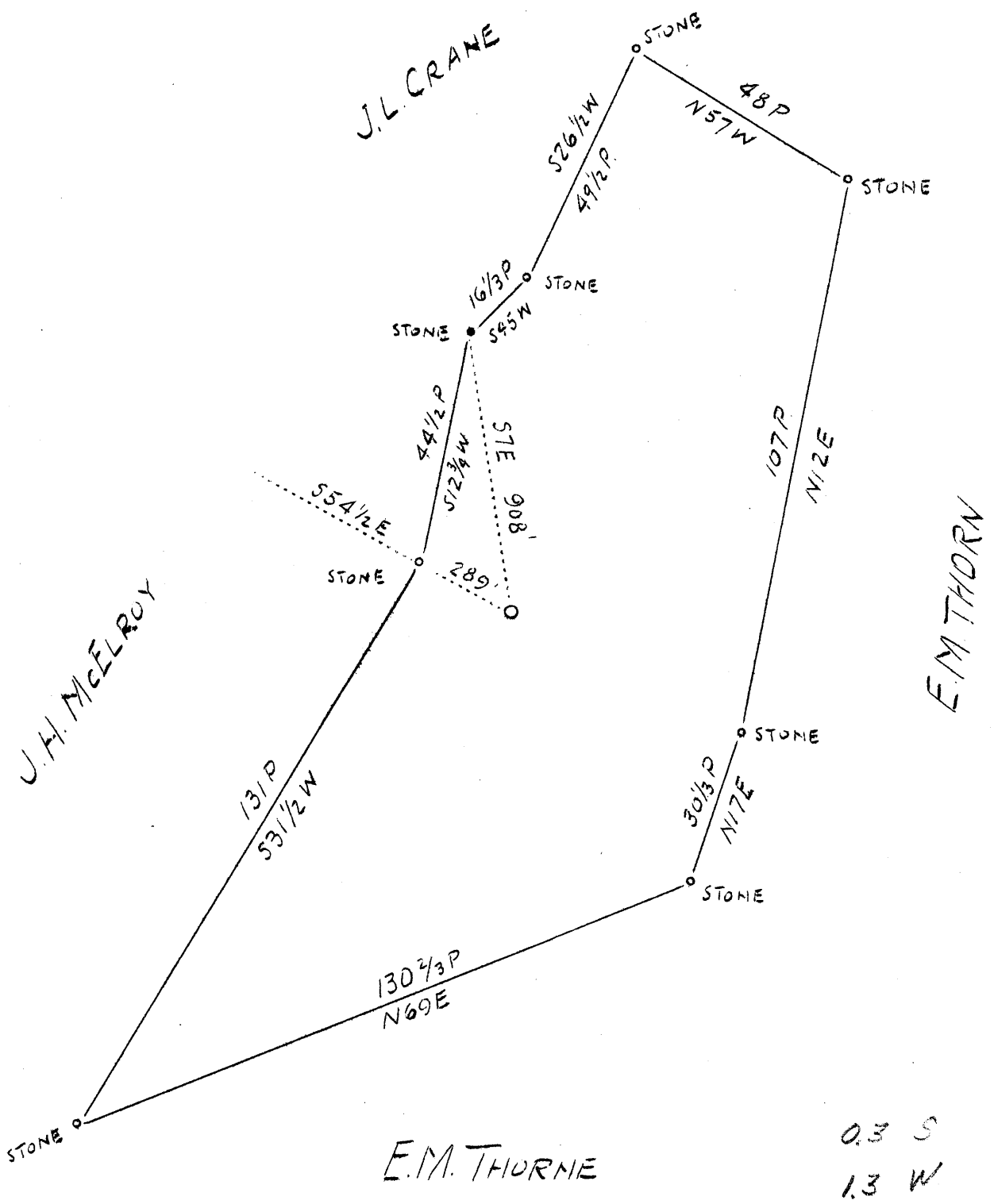


M

LATITUDE 39° 30'

LONGITUDE 81° 00'



Company	J. E. Haught
Address	Bons Run, W. Va.
Farm	Jackaline Thorn
Tract	1 ³ / ₄
Acres	64 1/4
Elevation (Spirit Level)	733.5
Well (Farm) No.	1
Quadrangle	St. Marys <i>M.E.</i>
County	Tyler
District	Union
Eng.	J. S. Haught
Engineer's Reg. No.	C.S.T.C.
Date	8-16-38
Scale	1" = 30 rds.

STATE OF WEST VIRGINIA
 Department of Mines
 OIL & GAS DIVISION
 Charleston

WELL LOCATION MAP

File No. TYL - 95

x Denotes location of well on U. S. Topographic Maps, scale 1 to 62,500, latitude and longitude lines being represented by border lines as shown.

- Denotes one inch spaces on border line of original tracing.

WEST VIRGINIA DEPARTMENT OF MINES

OIL AND GAS DIVISION

W E L L R E C O R D

Permit No. Tyl. 95

St. Marys Quad.

Oil Well

CASING & TUBING

Company	J.E.Haught and others	3 1/2	96	96
Address	Bens Run , W.Va.	6 5/8	753	753
Farm	Jacqueline Thorn & E. M. Thorn			
Location	Branch of Buffalo Cr. Acres ?	PACKER		
Well No.	1 Elev. 753.5'			
District	Union County Tyler			NONE
Surface	Jacqueline Thorn, Friendly, W.Va.			
Mineral	Same			
Drilling	Commenced Sept. 1, 1938			
	Completed Oct. 1, 1938			
Date Shot	Oct. 4, 1938	Depth 7.76	No coal encountered	
Oil	About 1/2 bbl. , 1st 24 hrs.			
Volume	---			
Salt Water	About 1/2 Bbl.			

Formation Color ^{Har} Top Base Result Formation Color ^{Har} Top Base Result

Formation	Color	^{Har}	Top	Base	Result	Formation	Color	^{Har}	Top	Base	Result
Soil					30						
Sand			30		60						
Slate			60		200						
Red Rock			200		300						
Slate	White		300		380						
Sand			380		390						
Slate			390		575						
Red Rock			575		650						
Slate	White		650		700						
Pink Rock			700		740						
Lime			740		775						
Cow Run Sand			775		785						