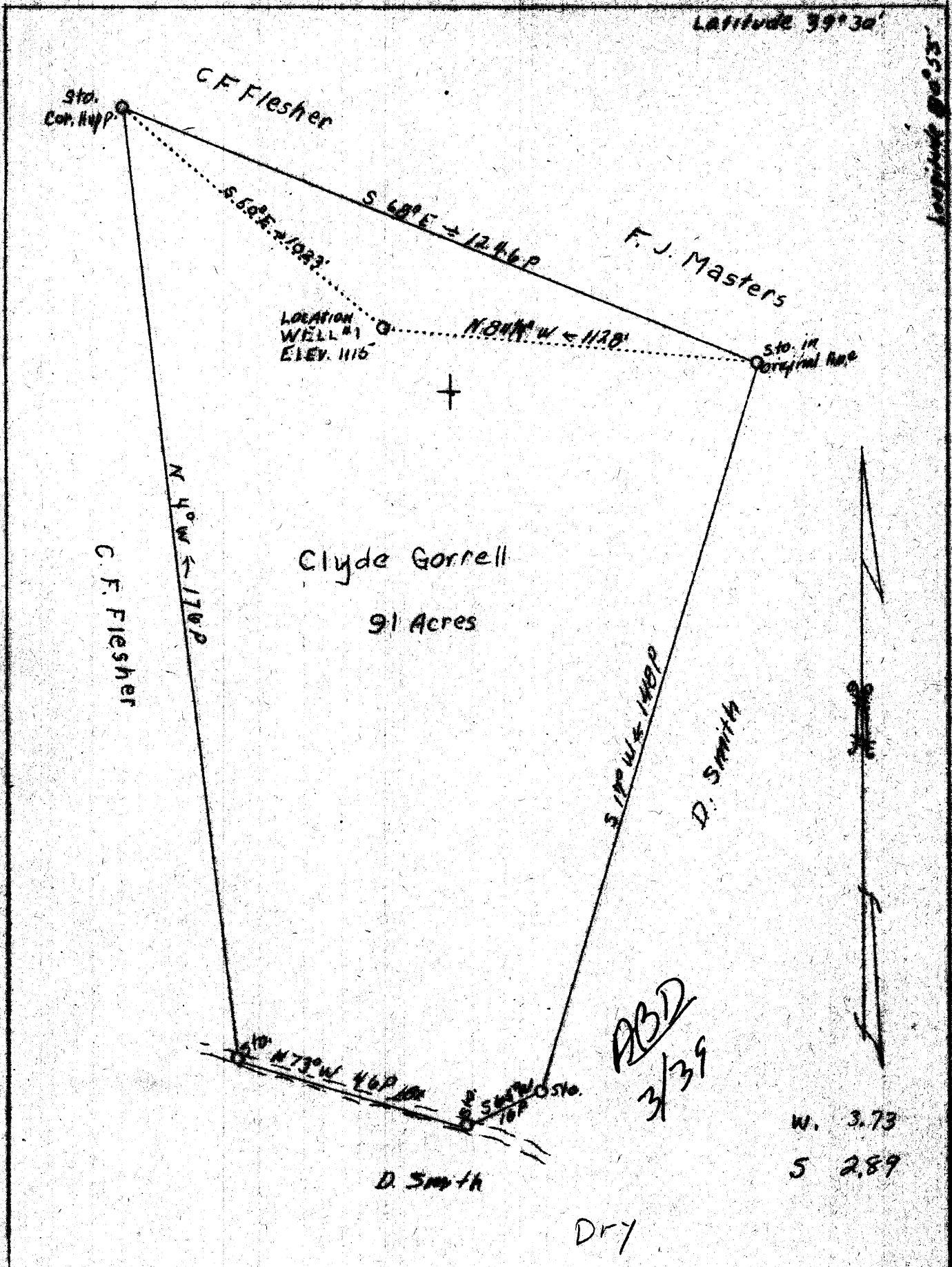


Latitude 39°30'

Longitude 82°53'



Clyde Gorrell  
91 Acres

ABD  
3/39

D.R.Y.

W. 3.73  
S 2.89

**New Location**

Company	Ohio Oil & Gas Co.	STATE OF WEST VIRGINIA
Address	St. Marys, W. Va.	Department of Mines
Farm	Clyde Gorrell	OIL & GAS DIVISION
Acres	91	Charleston
Well (Farm) No.	One	
Elevation (SL)	1115	
Quadrangle	West Union N.W.	
County	Tyler	
District	Meade	
Engineer	Parker E. Peters	
Eng. Reg. No.	485	
Date	Dec. 14, 1938	
Scale	1" = 400'	

**WELL LOCATION MAP**  
File No. 711-101

x Denotes location of Well on U. S. topographic maps, scale 1 to 62,500, latitude and longitude lines being represented by border lines as shown.  
- Denotes one inch spaces on border line of original tracing.