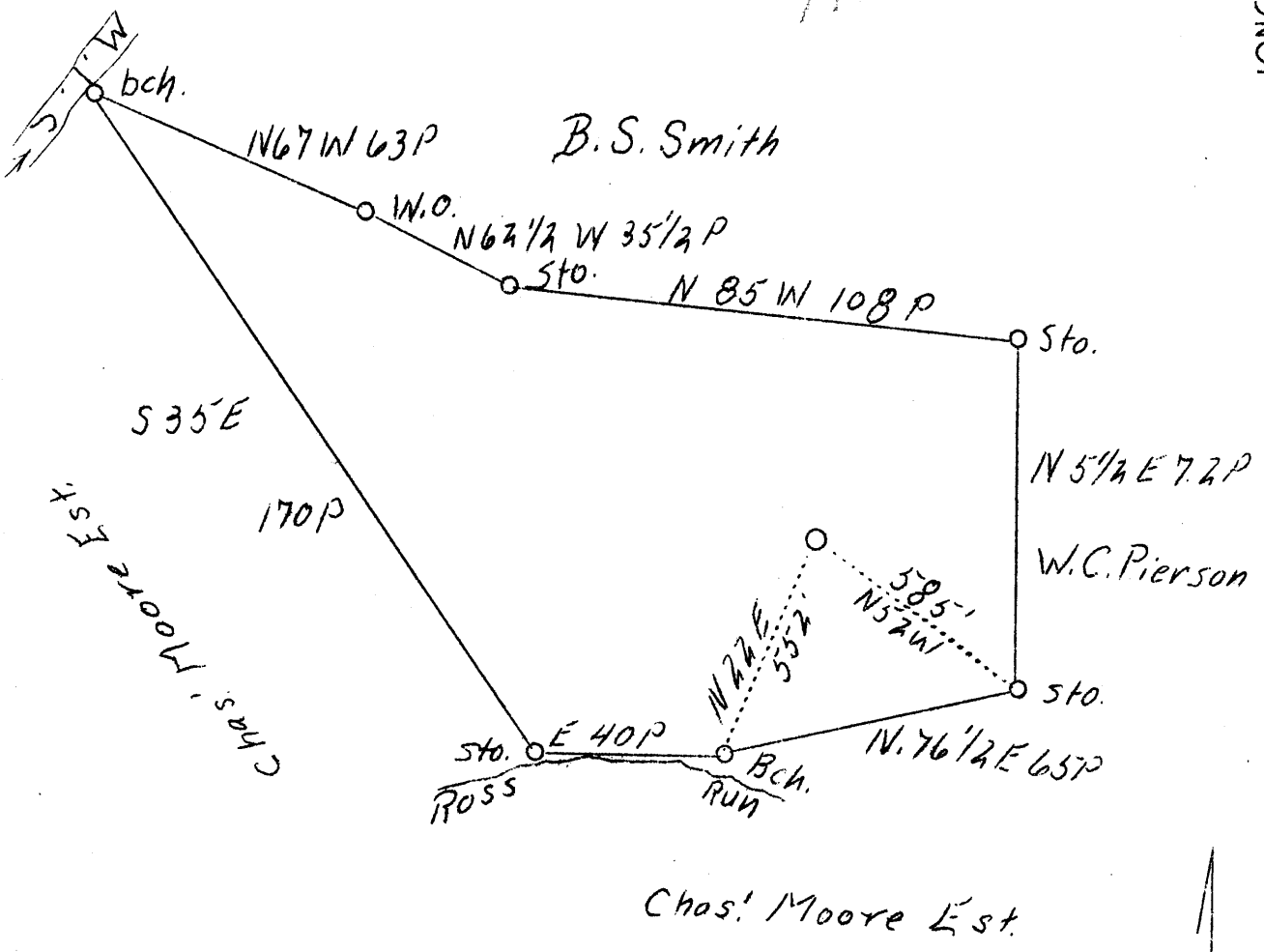


LATITUDE 39° 25'

LONGITUDE 80° 50'



New location

Company	Delbert Bachelor
Address	Molehill
Farm	D. D. Davis
Tract	1
Acres	82
Well (Farm) No.	1
Elevation (SL)	945.60
Quadrangle	West Union ☺
County	Tyler
District	Cent. 1
Engineer	J. S. Haught
Eng. Reg. No.	County Surveyor
Date	May 29, 1939
Scale	1" = 40 rods

STATE OF WEST VIRGINIA  
 Department of Mines  
 OIL & GAS DIVISION  
 Charleston

WELL LOCATION MAP

File No. TYL-103

x Denotes location of well on U. S. Topographic Maps, scale 1 to 62,500, latitude and longitude lines being represented by border lines as shown.

- Denotes one inch spaces on border line of original tracing.

