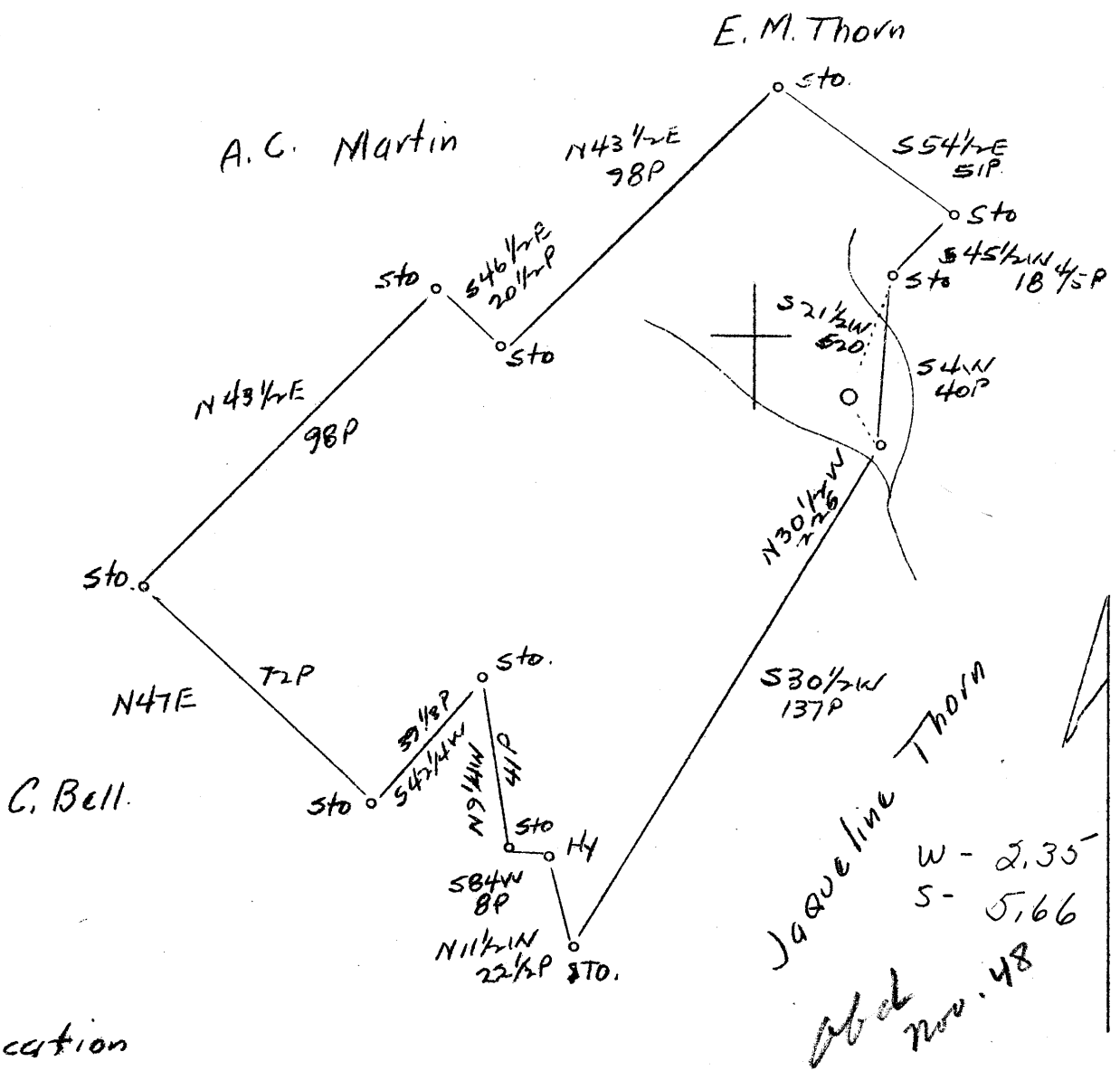


M

LATITUDE 39° 35'

LONGITUDE 81° 00'



Location

Company	Perrin Oil Company
Address	Power, W. Va.
Farm	J. H. McIlroy
Tract	1
Acres	102
Well (Farm) No.	1
Elevation (SL)	781
Quadrangle	New Matamoras <i>S.E.</i>
County	Tyler
District	Union
Engineer	J. S. Haught
Eng. Reg. No.	County Surveyor
Date	Oct. 11, 1939
Scale	1" = 40 rods

STATE OF WEST VIRGINIA
Department of Mines
OIL & GAS DIVISION
Charleston

WELL LOCATION MAP

File No. TYL-109

x Denotes location of well on U. S. Topographic Maps, scale 1 to 62,500, latitude and longitude lines being represented by border lines as shown.

- Denotes one inch spaces on border line of original tracing.

WEST VIRGINIA DEPARTMENT OF MINES
OIL & GAS DIVISION
W E L L R E C O R D

Permit No. Tyl-109
New Matamore Quad.

Oil Well

Company	Perrin Oil Co.	CASING & TUBING	
Address	Box 146, Power, W. Va.	6-5/8	125 125
Farm	J. H. McIlory Estate ACRES 102	4-7/8	760 760
Location	Little Buffalo	2	824 824
Well No.	1 ELEV. - 781'	No packer used	
District	Union - Tyler County	Perf. bottom - 822	
Surface & Mineral Address	J. L. & Anna B. McIlory, Executors Pittsburgh, Pa.	Coal blossom at 720	
Commenced	June 14, 1940		
Completed	Aug. 19, 1940		
Shot	8/20/40 - depth 828		
Open Flow	None		
Volume	60 cu. ft.		
Rock pressure	Not gauged		
Oil	6 bbls. 1st 24 hrs.		
Fresh Water	None		
Salt Water	60		

Soil	0	12	
Shale - light	12	120	
Fresh water	120	125	
Shale - light	125	280	
Rock - pink	280	290	
Slate - dark	290	390	
Slate & Shells	390	490	
Horse Neck Sand <i>Humphrey</i>	490	512	
Slate - dark	512	660	
Rock - red	660	730	
Rock - pink	730	760	
Shale - green	760	790	
Rock - red - soft	790	793	Will cave
Slate	793	814	Oil & Gas encountered at 814 and 828
Cow Run Sand	814	836	