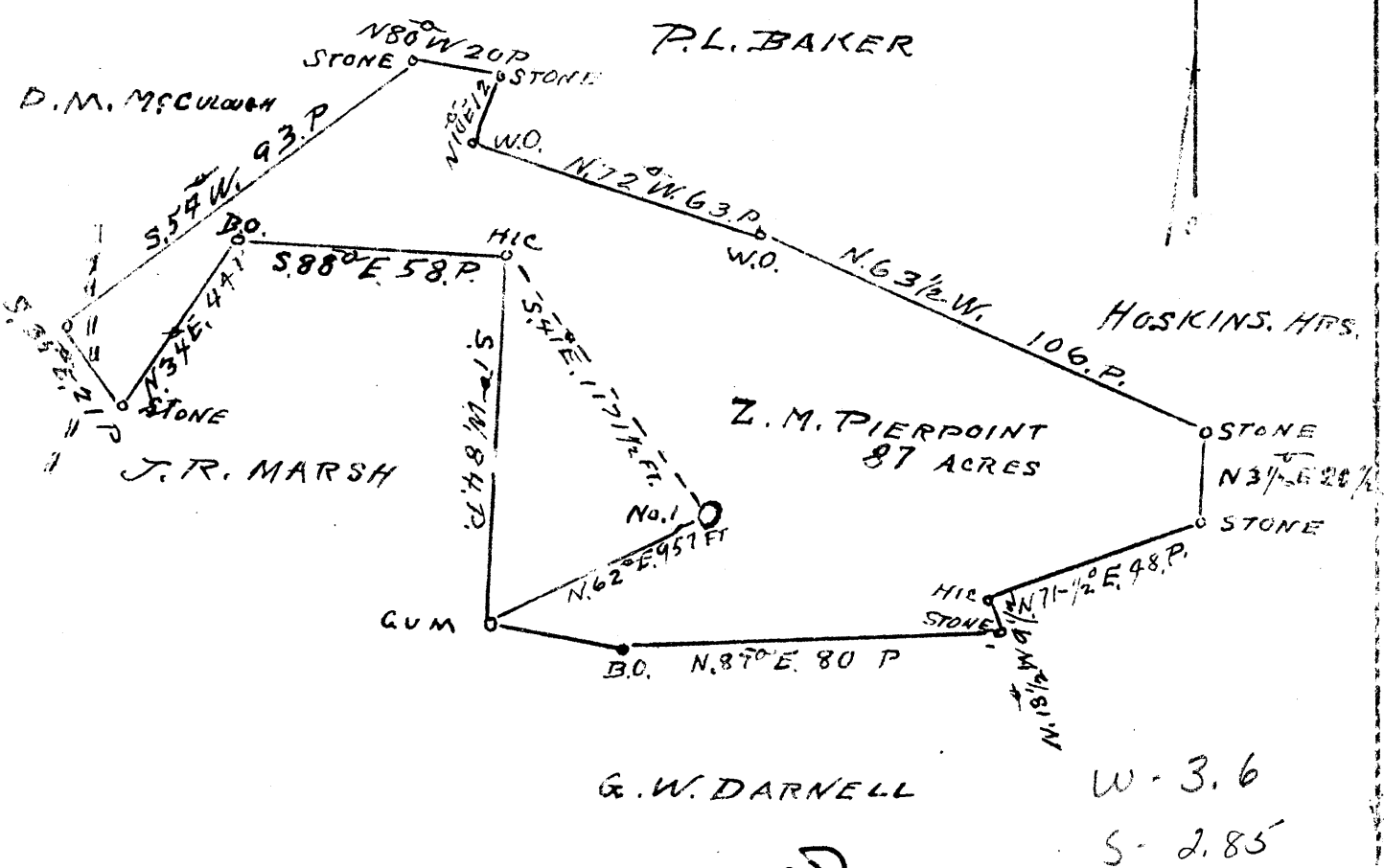


Latitude 39° 25'

Longitude 80° 50'



New Location  X  
 Drill Deeper   
 Abandonment

ADD  
6/40

Company M.D. OIL & GAS COMPANY  
 Address PENNSBORO W.VA  
 Farm Z.M. PIERPOINT  
 Tract \_\_\_\_\_ Acres 87 Lease No. \_\_\_\_\_  
 Well (Farm) No. one Serial No. \_\_\_\_\_  
 Elevation (Spirit Level) 1055  
 Quadrangle WEST UNION C  
 County TYLER District CENTERVILLE  
 Engineer J. J. Dunbar  
 Engineer's Registration No. 65  
 File No. C-23- Drawing No. \_\_\_\_\_  
 Date March 15 1940 Scale 1/4" = 100' 1/4" = 100'

STATE OF WEST VIRGINIA  
 DEPARTMENT OF MINES  
 OIL AND GAS DIVISION  
 CHARLESTON

WELL LOCATION MAP  
 FILE NO. TYL-112

+ Denotes location of well on United States Topographic Maps, scale 1 to 62,500, latitude and longitude lines being represented by border lines as shown.  
 - Denotes one inch spaces on border line of original tracing.

WEST VIRGINIA DEPARTMENT OF MINES  
OIL & GAS DIVISION  
W E L L R E C O R D

Permit No. Tyl-112  
West Union Quad.

Dry Hole

Company	N. D. Oil & Gas Co. (address not given)	CASING & TUBING	
Farm	Z. M. Pierpoint ACRES 87½	8-1/4	670
Location	Sancho	6-5/8	1175
Well No.	1 ELEV. 1055	5-3/16	1930
District	Centerville - Tyler County		
Surface & Mineral	Z. M. Pierpoint, Middlebourne, W. Va.		
Commenced	April 10, 1940		
Completed	June 15, 1940		
Open Flow	-		
Volume	-		
Rock Pressure	-		
Oil	-		
Water	-		

Coal		720	723	- coal blossom
Cow Run Sand	wh h	1075	1100	
B. Dunkard	wh h	1180	1200	
Gas Sand	wh h	1245	1265	
1st Salt Sand	wh h	1325	1415	
2nd Salt Sand	wh h	1455	1550	
Maxon	wh h	1865	1880	
Little Lime	wh h	1900	1915	
Pencil Cave	s	1920	1925	
Big Lime	wh	1925	1993	
Keener	wh	1993	2010	
Big Injun		2015	2120	
Squaw		2120	2136	

10

1925  
1925