

New Location
 Drill Deeper
 Abandonment

Abandoned under Permit TYL-376
 To be redrilled under Permit TYL-152

Company ESTELLE OIL CO.
 Address SISTERSVILLE, W.Va.
 Farm John McCoy
 Tract 1 Acres 318 1/2 Lease No. _____
 Well (Farm) No. 2 Serial No. _____
 Elevation (Spirit Level) 885'
 Quadrangle New Martinsville
 County Tyler District LINCOLN
 Engineer [Signature]
 Engineer's Registration No. _____
 File No. H-E Drawing No. 862
 Date 11-25-43 Scale 1" = 990'

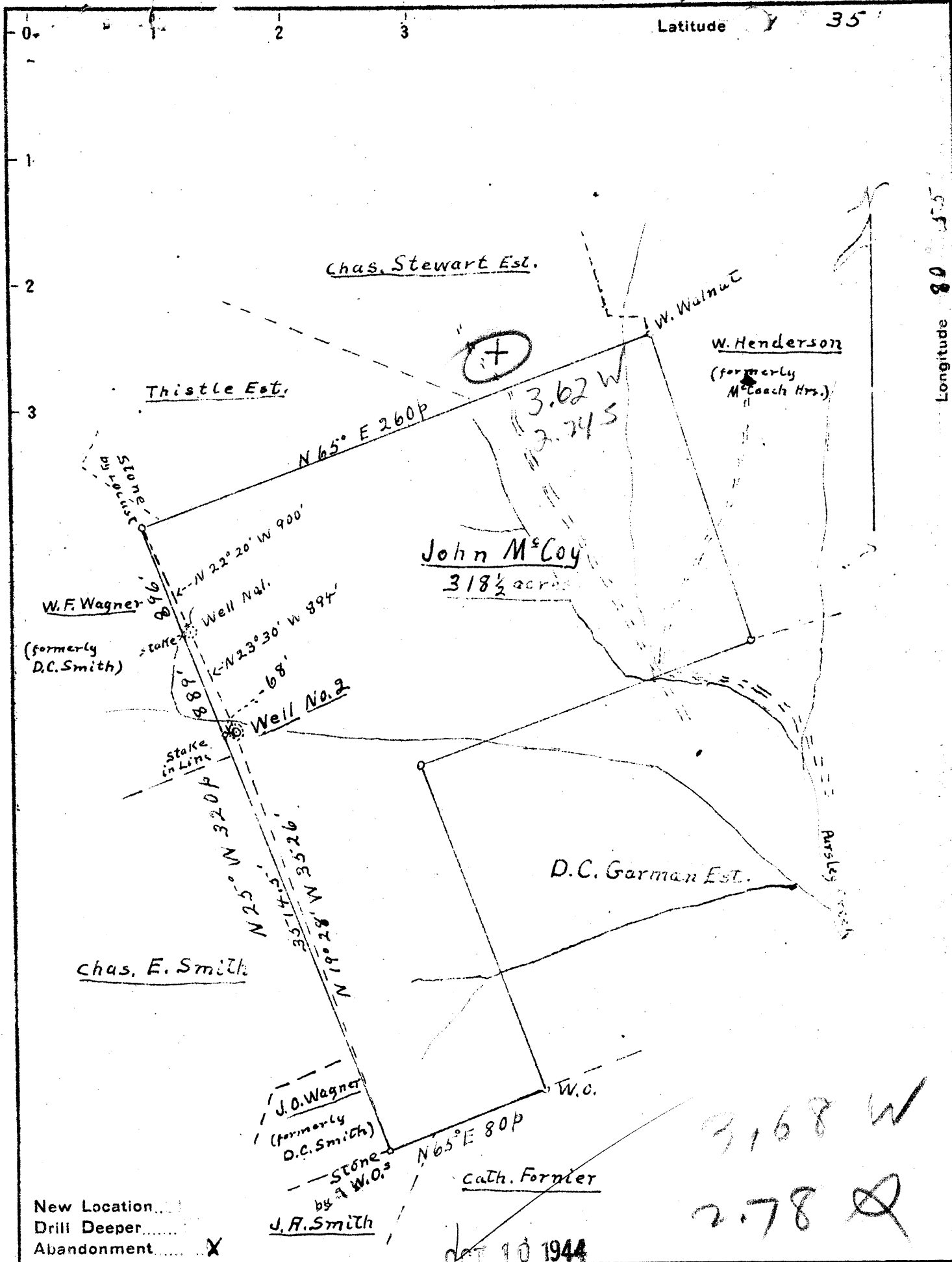
STATE OF WEST VIRGINIA
 DEPARTMENT OF MINES
 OIL AND GAS DIVISION
 CHARLESTON

WELL LOCATION MAP
 FILE NO. Ty1-376-A
 (152)

+ Denotes location of well on United States Topographic Maps, scale 1 to 62,500. Latitude and longitude lines being represented by border lines as shown.

- Denotes one inch spaces on border line of original tracing

JOHN MCCOY NO. 2 - ESTELLE OIL CO., - 6-0 28 (Cubill) TYL-152



New Location...
 Drill Deeper...
 Abandonment... X

Oct 10 1944

| | |
|-----------------------------|---------------------------|
| Company | ESTELLA OIL CO. |
| Address | SISTERSVILLE, W.Va. |
| Farm | John M. Coy |
| Tract | 1 Acres 318 1/2 Lease No. |
| Well (Farm) No. | 2 Serial No. |
| Elevation (Spirit Level) | 885 |
| Quadrangle | New Martinsville SW |
| County | Tyler District Lincoln |
| Engineer | Don L. Pigg |
| Engineer's Registration No. | |
| File No. | A-E Drawing No. 862 |
| Date | 11-25-43 Scale 1" = 990' |

STATE OF WEST VIRGINIA
 DEPARTMENT OF MINES
 OIL AND GAS DIVISION
 CHARLESTON

WELL LOCATION MAP
 FILE NO. TYL-376-A
 152

+ Denotes location of well on United States Topographic Maps, scale 1 to 62,500. latitude and longitude lines being represented by border lines as shown.

- Denotes one inch spaces on border line of original tracing.

Lincoln District, Tyler County, W. Va.
 Dr. Little Oil Co.
 Elevation, 910' B.
 Oil and gas well.
 Authority, Mr. Thoenen.
 On Head of Pursley Creek.

~~376A~~ 376A-15

| | Top. | Bottom. |
|---|------|---------|
| Sand | 473 | 495 |
| Cow Run Sand (oil, 846-855') | 843 | |
| Gas Sand | 995 | 1042 |
| 1st Salt Sand | 1095 | 1130 |
| 2nd Salt Sand (water, 1300') | 1220 | 1335 |
| 3rd Salt Sand | | 1410 |
| <i>Salt</i> Maxton Sand (gas, 1520') | 1470 | 1530 |
| <i>Salt</i> Stray sand (gas, 1580') | 1576 | 1600 |
| Big Lime | 1626 | 1656 |
| Keener Sand (gas, 1658'; oil, 1664-1670') | 1656 | 1676 |
| Total depth | | 1676 |

"Pittsburgh Coal approx. 500' below surface).

WEST VIRGINIA DEPARTMENT OF MINES
OIL & GAS DIVISION
W E L L R E C O R D

Permit No. Tyl 152
New Martinsville Quad.

Gas Well
CASING & TUBING

Company Now Owned by Estell Oil Co.
Address Sistersville, W.Va.
Farm John McCoy Acres 305
Location Pursley Creek
Well No. 2 Elev. 885
District Lincoln Tyler County
Surface T.P. Gray, Sistersville, W.Va.
Mineral 1/2 by Estelle V. Dye
1/2 by T.P. Gray, Sistersville, W.Va.
Commenced Well was drilled by Berkley Oil Co
in about 1919 or 20
Volume Well made about 40 MCF from Maxon Sand
until 1931 when it quit.
Oil None

6 1/2 1471 1471

We put in 1508' of 4 7/8
csg. in 1946

| | | | |
|---------------------|------|--------|----------------------|
| Sandy | 473 | 495 | |
| ✓ Cow Run | 843 | 846-55 | small showing of oil |
| ✓ Gas Sand | 995 | 1042 | |
| ✓ First Salt | 1095 | 1130 | |
| ✓ Second Salt | 1220 | 1335 | |
| Water | 1300 | | |
| Bottom Salt Sands | | 1410 | |
| Maxon Sand | 1470 | 1530 | |
| Gas | 1520 | | |
| ✓ Stray Sand ← salt | 1576 | 1600 | |
| Gas | 1580 | | |
| ✓ Lime S.L. | 1626 | 1656 | |
| ✓ Keener | 1656 | | |
| Well drilled to | | 1708 | |

1625
885
1471

The above is from several records received from former owners and we have no authority of the correctness. There was gas sold for about ten years but small amount. We have been trying to revive the well and have shot it again 1658 to 1573 and will know this coming summer whether or not the well has to be abandoned.

The shot helped it but little, but the water stood on the sand so long that it now has to be exhausted and when so done, we may know what is best to do but it will be summer before we know of anything.



147

STATE OF WEST VIRGINIA
DEPARTMENT OF MINES
OIL AND GAS DIVISION

WELL RECORD

Permit No. TYL-176 → 152

Oil or Gas Well _____
(KIND)

Company Estelle Oil Company
Address Sistersville, W. Va.
Farm John McCoy Acres 305
Location (waters) Pursley Creek
Well No. 2 Elev. 885
District Lincoln County Tyler
The surface of tract is owned in fee by _____
T. P. Gray Address Sistersville, W. Va.
Mineral rights are owned by _____
Address _____
Drilling commenced Well was drilled by Berkley
Drilling completed Oil Company about 1919 or 1920
Date Shot _____ From _____ To _____
With _____

| Casing and Tubing | Used in Drilling | Left in Well | Packers |
|-------------------|--------------------|--------------|----------------|
| Size | | | |
| 16 | | | Kind of Packer |
| 18 | | | |
| 10 | | | Size of |
| 8 1/4 | | | |
| 6 1/4 | 1471 | 1471 | Depth set |
| 5 3/16 | we put in 1508' of | | |
| 3 | 4-7/8" casing in | | Perf. top |
| 2 | 1946 | | Perf. bottom |
| Liners Used | | | Perf. top |
| | | | Perf. bottom |

Open Flow _____ /10ths Water in _____ Inch
_____ /10ths Merc. in _____ Inch
Volume Well made about 40% from Maxon until 1931
Rock Pressure _____ lbs. _____ hrs.
Oil none bbls., 1st 24 hrs.
Fresh water _____ feet _____ feet
Salt water _____ feet _____ feet

| CASING CEMENTED | SIZE | No. Ft. | Date |
|---|------|---------|------|
| | | | |
| COAL WAS ENCOUNTERED AT _____ FEET _____ INCHES | | | |
| | FEET | INCHES | FEET |
| | FEET | INCHES | FEET |

| Formation | Color | Hard or Soft | Top | Bottom | Oil, Gas or Water | Depth Found | Remarks |
|----------------------|-------|--------------|------|--------|----------------------|-------------|---------|
| Sand | | | 473 | 495 | | | |
| Cow Run | | | 843 | 846 | | | |
| Gas Sand | | | 995 | 1042 | small showing of oil | | |
| First Salt Sand | | | 1095 | 1130 | | | |
| Second Salt Sand | | | 1220 | 1335 | | | |
| Water | | | 1300 | | | | |
| Bottom of Salt Sands | | | | 1410 | | | |
| Maxon Sand | | | 1470 | 1530 | | | |
| Gas | | | 1520 | | | | |
| Stray Sand | | | 1576 | 1600 | | | |
| Gas | | | 1580 | | | | |
| Lime | | | 1626 | 1656 | | | |
| Keener | | | 1656 | | | | |
| Well drilled to | | | | 1708' | | | |

The above is from several records received from former owners and we have no authority of the correctness. There was gas sold for about ten years but small amount. We have been trying to revive the well and have shot it again 1658 to 1573' and will know this coming summer whether or not the well has to be abandoned. The shot helped it but little but the water stood on the sand so long that it now has to be exhausted and when so done, we may know what is best to do but it will be summer before we know of anything. February 7, 1947