

MM

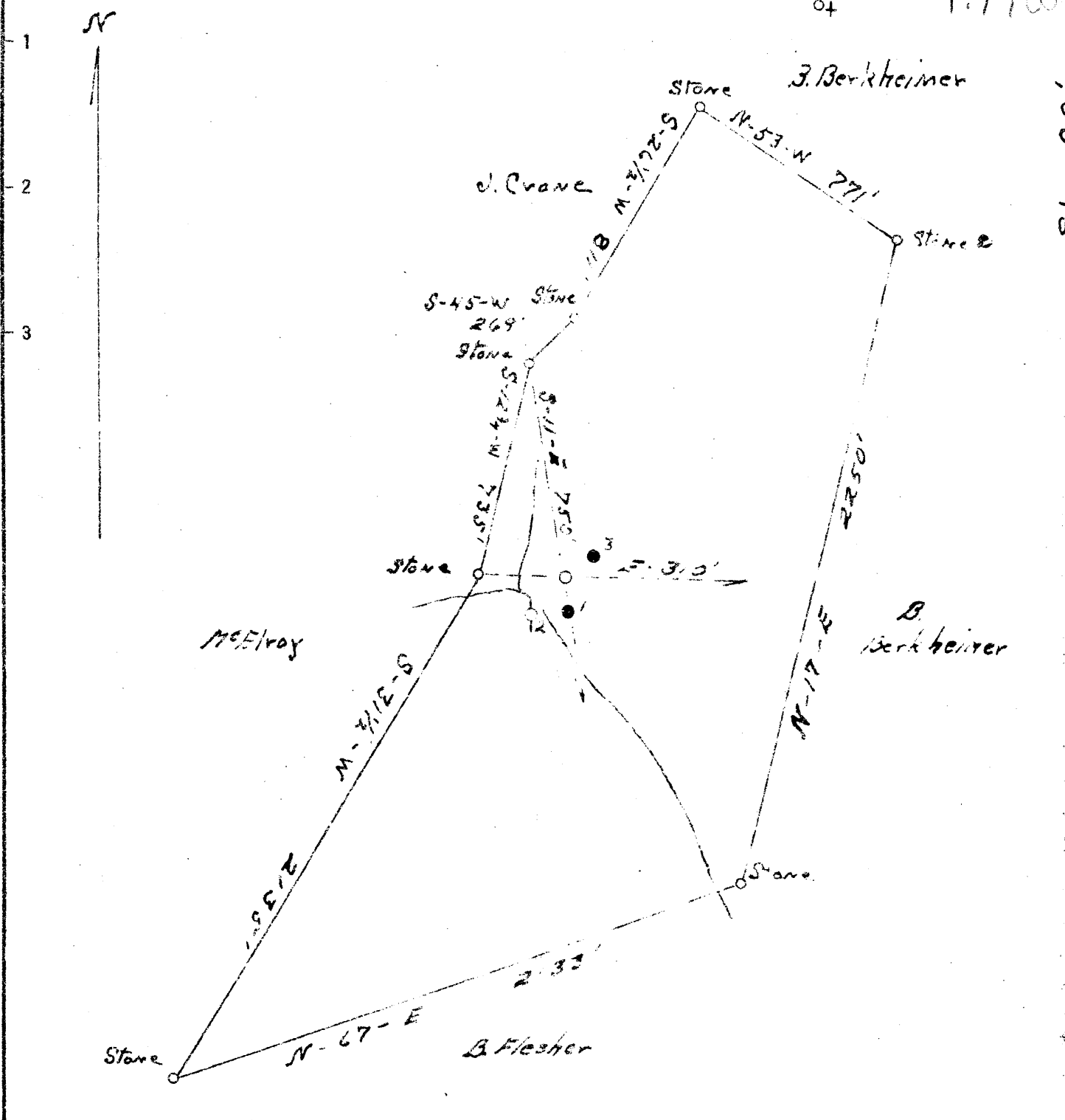
Latitude 39 30'

0.875

Elev. 709
04

1.77W

Longitude 81 00'



New Location X
 Drill Deeper
 Abandonment

Company Perrin Oil Company
 Address Wellsburg, West Virginia
 Farm Jaqueline Thorne
 Tract _____ Acres 6 1/4 Lease No. _____
 Well (Farm) No. Four Serial No. _____
 Elevation (Spirit Level) 759.50
 Quadrangle St. Marys
 County Tyler District Union
 Engineer J. S. Haught
 Engineer's Registration No. Tyler County
 File No. _____ Drawing No. _____
 Date 9-7-46 Scale 1 inch = 500'

STATE OF WEST VIRGINIA
 DEPARTMENT OF MINES
 OIL AND GAS DIVISION
 CHARLESTON

WELL LOCATION MAP
 FILE NO TYL-157

+ Denotes location of well on United States Topographic Maps, scale 1 to 62,500, latitude and longitude lines being represented by border lines as shown.

- Denotes one inch spaces on border line of original tracing.

WEST VIRGINIA DEPARTMENT OF MINES
OIL & GAS DIVISION
W E L L R E C O R D

Permit No. Eyl 157

St. Mary's Quad.

Company

Address

Farm

Location

Well No.

District

Surface

Mineral

Commenced

Completed

Date shot

Salt Water

Perrin Oil Company

16th & Marianna,

Wellsburg, W.Va.

Jaqueline Thorn A 160

Little Buffalo

4 Elev. 7800

Union Tyler County

Thorn Heirs, Friendly, W.Va.

Same

Oct. 1.1946

May 1947

May 9 Depth 850' to 836'

with glycerine 25 qts.

836'; 130'

Gas Well
CASING & TUBING

6 5/8 130 130

5 3/16 674 674

Packer

Depth 130

674

Coal at 450' 10"

Red Rock	S	0	30
Blue Shale	Bl S	30	60
Gray Sand	H	60	120
Blue Shale	S	110	120
Red Rock	S	120	125
Blue Sandy Shale	S	125	130
Red Rock	S	130	145
Blue Sandy Shale	S	145	175
Red Rock	S	175	200
Blue Shale	Bl S	200	215
Red Rock	S	215	225
Blue Shale	Bl S	225	275
Gray Lime	Gr H	275	315
Red Rock	S	315	325
Gray Lime	H	325	400
Sandy Shale	H	400	425
Blue Shale	Bl S	425	600
Red Rock	S	600	665
Blue Shale	Bl S	665	715
Red Rock	S	715	725
Blue Shale	Bl S	725	782
Little Pink	S	782	795
Cow Run Sand		795	850

Oil gas and water 834 to 850'