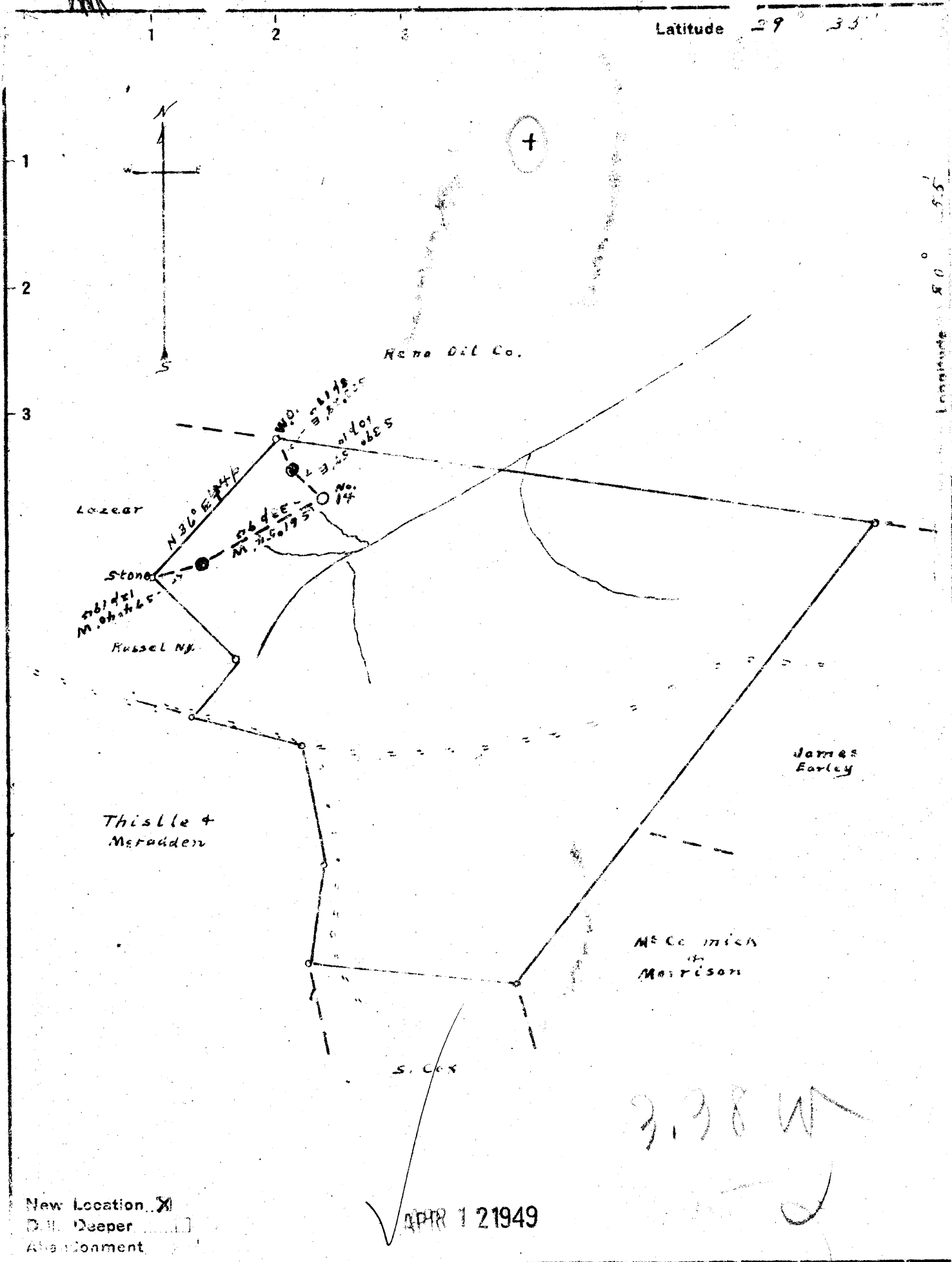


Latitude 29° 35'

AAA



New Location
 D.H. Deeper
 Abandonment

✓ APR 1 21949

3.98 W
 J. R. Bull

Company J. R. Bull
 Address Sistersville, W. Va.
 Farm J. R. Dunfee
 Tract 1 Acres 100 Lease No. 6091
 Well (Farm) No. 14 Serial No.
 Elevation (Spirit Level) 903.48'
 Quadrangle New Martinsville
 County Tyler District Lincoln
 Engineer Don L. Figgie
 Engineer's Registration No. M
 File No. 046-SP11 Drawing No. 1391-R1
 Date May 20, '48 Scale 1" = 300'

STATE OF WEST VIRGINIA
 DEPARTMENT OF MINES
 OIL AND GAS DIVISION
 CHARLESTON

WELL LOCATION MAP
 FILE NO. JYL-162

• Denotes location of well on United States Topographic Maps, scale 1 to 62,500, latitude and longitude lines being represented by border lines as shown.

- Denotes one inch spaces on border line of original tracing.

6-0 28

