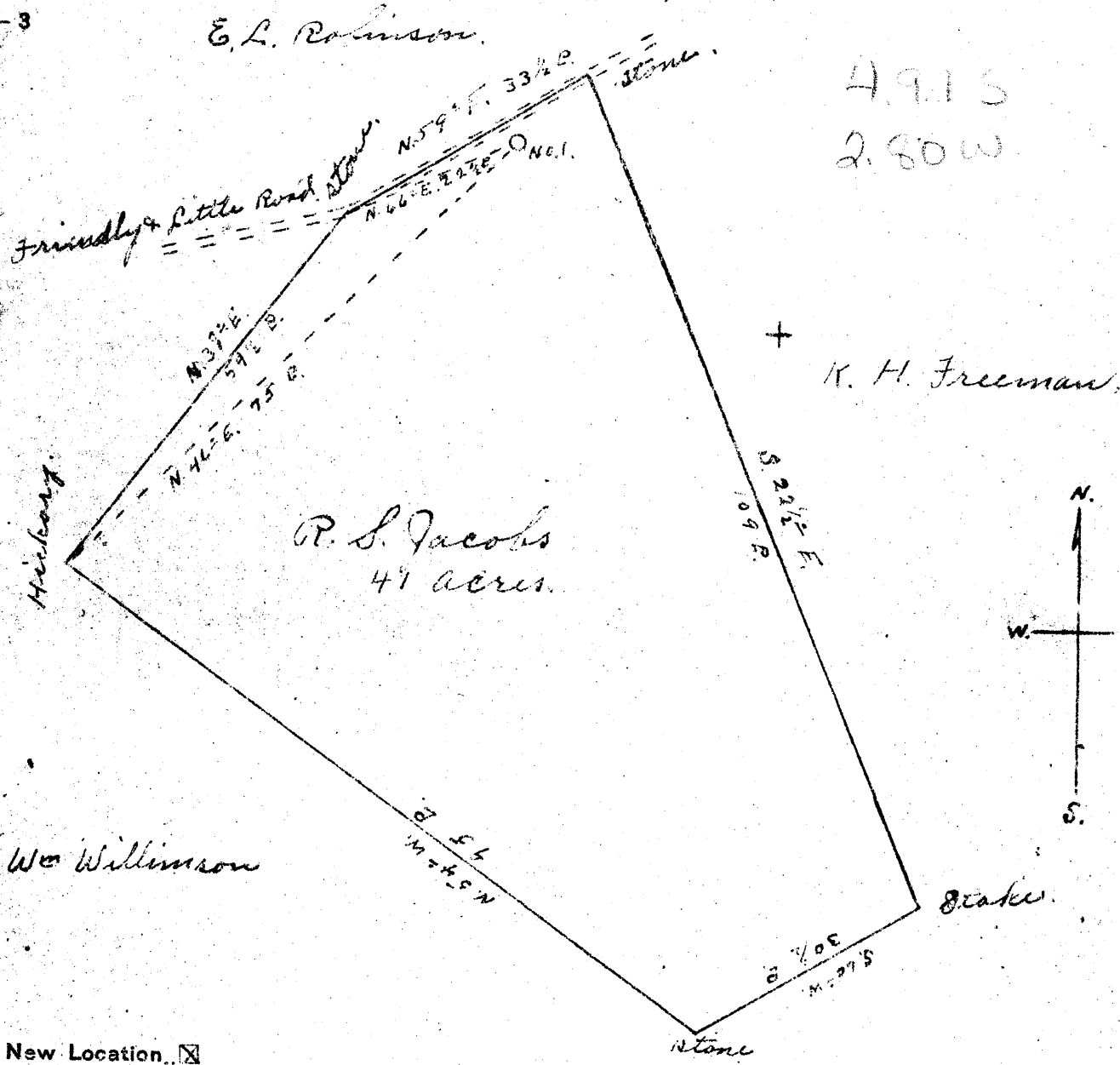


Latitude 39° 35'

Longitude 81° 00'



New Location
 Drill Deeper
 Abandonment

Company R. S. Jacobs Oil Co.
 Address Friendly W.Va.
 Farm R. S. Jacobs
 Tract _____ Acres 41 Lease No. _____
 Well (Farm) No. 1 Serial No. _____
 Elevation (Spirit Level) 830'
 Quadrangle New Matamoras
 County Tyler District Union
 Engineer Robert R. Anderson
 By Jno Triplett, Surveyor
 Engineer's Registration No. 226
 File No. _____ Drawing No. _____
 Date Sept 10 1949 Scale 1" = 20 R.

STATE OF WEST VIRGINIA
 DEPARTMENT OF MINES
 OIL AND GAS DIVISION
 CHARLESTON

WELL LOCATION MAP
 FILE NO. JYL-171

+ Denotes location of well on United States Topographic Maps, scale 1 to 62,500, latitude and longitude lines being represented by border lines as shown.
 - Denotes one inch spaces on border line of original tracing.

