

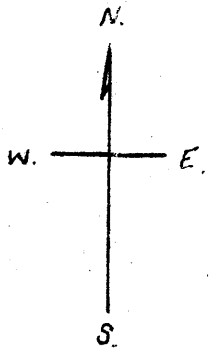
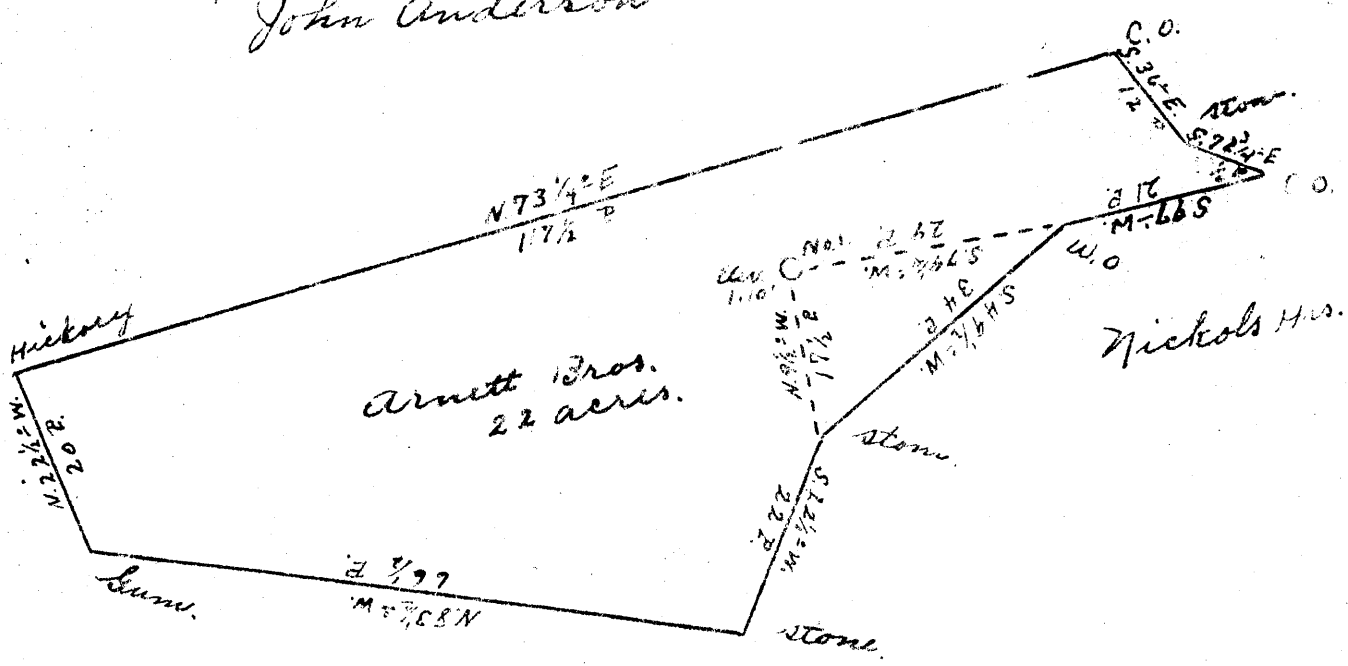
Latitude 39° 30'

Longitude 80° 45'



875
2.29 W

John Anderson



Nickols Hrs.

- New Location
- Drill Deeper
- Abandonment

Company Morgan Petroleum Corp.
 Address Akron Ohio
 Farm Arnett Bros.
 Tract _____ Acres 22 Lease No. _____
 Well (Farm) No. 1 Serial No. _____
 Elevation (Spirit Level) 1110'
 Quadrangle West Union NE
 County Tyler District Ellsworth
 Engineer Robert R. Anderson
 By Jno. T. Little, Surveyor
 Engineer's Registration No. 296
 File No. _____ Drawing No. _____
 Date Nov. 1 1949 Scale 1" = 20 P

STATE OF WEST VIRGINIA
 DEPARTMENT OF MINES
 OIL AND GAS DIVISION
 CHARLESTON

WELL LOCATION MAP
 FILE NO. JYL-173

+ Denotes location of well on United States Topographic Maps, scale 1 to 62,500, latitude and longitude lines being represented by border lines as shown.

- Denotes one inch spaces on border line of original tracing.

WEST VIRGINIA DEPARTMENT OF MINES
OIL & GAS DIVISION
W E L L R E C O R D

Permit No. Tyl 173
West Union Quad.
Company
Address
Farm
Location
Well No.
District
Surface
Mineral
Commenced
Completed
Date shot

Volume
Oil
Water

Morgan Petroleum Corp.
109 North Union St., Akron, Ohio
C.N. Arnett et al Acres 22 10 374 Pld.
8 1/2 1250 "
Arnett #1 Elev. 1110' 6 5/8 2000 left in
Ellsworth Tyler County
C.N. Arnett et al, Mogadore, Ohio
Morgan Petroleum Corp. Akron, Ohio
May 25, 1950
July 5, 1950
7-2-50 Depth 2168 to 2200'
with 170# 90% sol. 60 qts. nitroglycerin
240,000 Nat. open flow
About 8 bbl. 1st 24 hrs.
120'; 670'

Oil and Gas
Well
CASING & TUBING

Red	0	20	Maxon Sand	1880	1920
Slate Blue	20	40	Slate	1920	1950
Red Rock	40	65	Little Lime	1950	1970
Slate Blue	65	75	Pencil Cave	1970	1975
Sand	75	100	Big Lime	1975	2080
Slate Blue	100	115	Keener Sand	2080	2110
Sand	115	140	Big Injun Sand	2110	2200
Red Rock	140	160	T.D.	2200	
Sand	160	185			
Slate Blue	185	197	Smell of oil 1917'		
Red Rock	197	205	Gas 2145-2158 240 M. Nat.		
Sand	205	238	Oil 2168-2178' 8 bbl. Nat.		
Red Rock	238	280			
Slate	280	327			
Sand	327	370			
Slate	370	415			
Red Rock	470	493			
Sand	493	508			
Slate	508	540			
Red Rock	540	572			
Sand	572	590			
Lime Red	590	630			
Slate Blue	630	650			
Sand Pitt	650	695			
Slate	695	700			
Sand	700	750			
Slate	750	780			
Lime	780	814			
Slate	814	866			
Sand	866	880			
Slate	880	1000			
Big Red	1000	1045			
Slate Blue	1045	1100			
Little Red	1100	1140			
Blue	1140	1155			
Sand	1155	1183			
Slate	1183	1220			
Sand	1220	1250			
Slate	1250	1320			
Rock Pink	1320	1330			
Blue	1330	1395			
Sand	1395	1433			
Slate Black	1433	1460			
Sand	1460	1475			
Slate Black	1475	1505			
1st Salt Sand	1505	1570			
Slate	1570	1630			
2nd Salt Sand	1630	1695			
Slate Black	1695	1730			
Sand	1730	1742			
Slate	1742	1785			
3rd Salt Sand	1785	1840			
Slate Blk	1840	1880			

1975
1110
865

2200
1110
1090

1920
1110
810

1755
1110
645