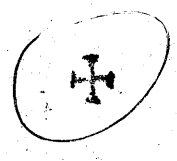
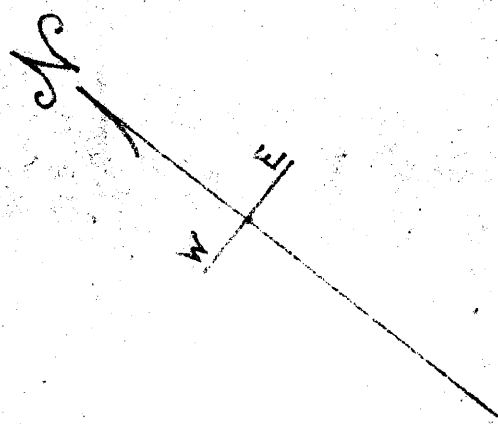
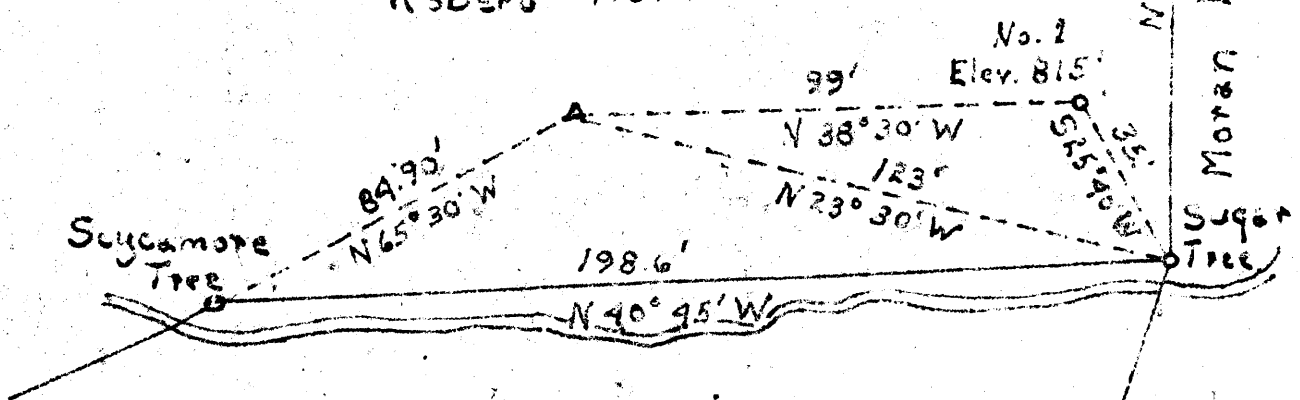


Latitude 39 35

Longitude 81° 00'



Robert Northcraft



N. Robinson

3.82
4.05

Part of larger tract of R. Northcraft

New Location
Elev. 815'

CS

Company A.F. Marple
 Address Charles St. St. Marys, W. Va.
 Farm Northcraft
 Tract _____ Acres 50 Lease No. _____
 Well (Farm) No. 1 Serial No. _____
 Quadrangle New Metamoras
 County Tyler
 District Union SE
 Engineer C.A. Hoop
 Engineer's Registration No. 1694
 File No. _____ Drawing No. _____
 Date May 22, 1950 Scale 1" = 40'

STATE OF WEST VIRGINIA
 DEPARTMENT OF MINES
 OIL AND GAS DIVISION
 CHARLESTON

WELL LOCATION MAP
 FILE NO. TYL-151-1

+ Denotes location of well on United States
 Topographic Maps, scale 1 to 62,500, lat-
 itude and longitude lines being represented
 by border lines as shown.

- Denotes one inch spaces on border line
 of original tracing.

WEST VIRGINIA DEPARTMENT OF MINES
OIL & GAS DIVISION
W E L L R E C O R D

Permit No. Tyl 181			Oil Well
New Matamoras Quad.			CASING & TUBING
Company	A.F. Marple and others		
Address	St. Marys, W.Va.	10	40
Farm	Robert Northcraft Acres 50	8 1/2	700
Location	Ohio River	6 5/8	1191
Well No.	1 Elev. 856		None
District	Union Tyler County		
Surface	Robert Northcraft, Friendly, W.Va.		
Mineral	Same		
Commenced	June 5, 1950		
Completed	Aug. 12, 1950		
Date shot	Aug. 12 Depth 1591 to 1599 with 40 qt. Nitro glycerin		
Oil	25 bbls. 1st 24 hrs.		
Salt Water	1591 to 1601		

Red Rock	0	25
Blue Rock	25	60
Red Rock	60	65
Sand	65	175
Slate	175	190
Red	190	195
Slate	195	205
Red	205	230
Slate	230	265
Lime	265	295
Slate	295	355
Lime	355	375
Slate	375	480
Lime Shell	480	490
Big Red	490	603
Sand	603	613
Slate Blue	613	642
Sand	642	652
Slate Blue	652	705
Slate White	705	808
Slate Blue	808	990
Salt Sand	990	1055
Slate White	1055	1065
Lime Shell	1065	1070
Sand	1070	1085
Slate	1085	1122
Sand	1122	1180
Slate	1180	1184
Lime	1184	1195
Slate Black	1195	1340
Sand	1340	1402
Shale	1402	1439
Maxon Sand	1439	1479
Slate	1479	1530
Keener	1530	1531
Shale Black	1531	1591
Injun Sand	1591	1624

Oil and gas and water 1591 to 1624