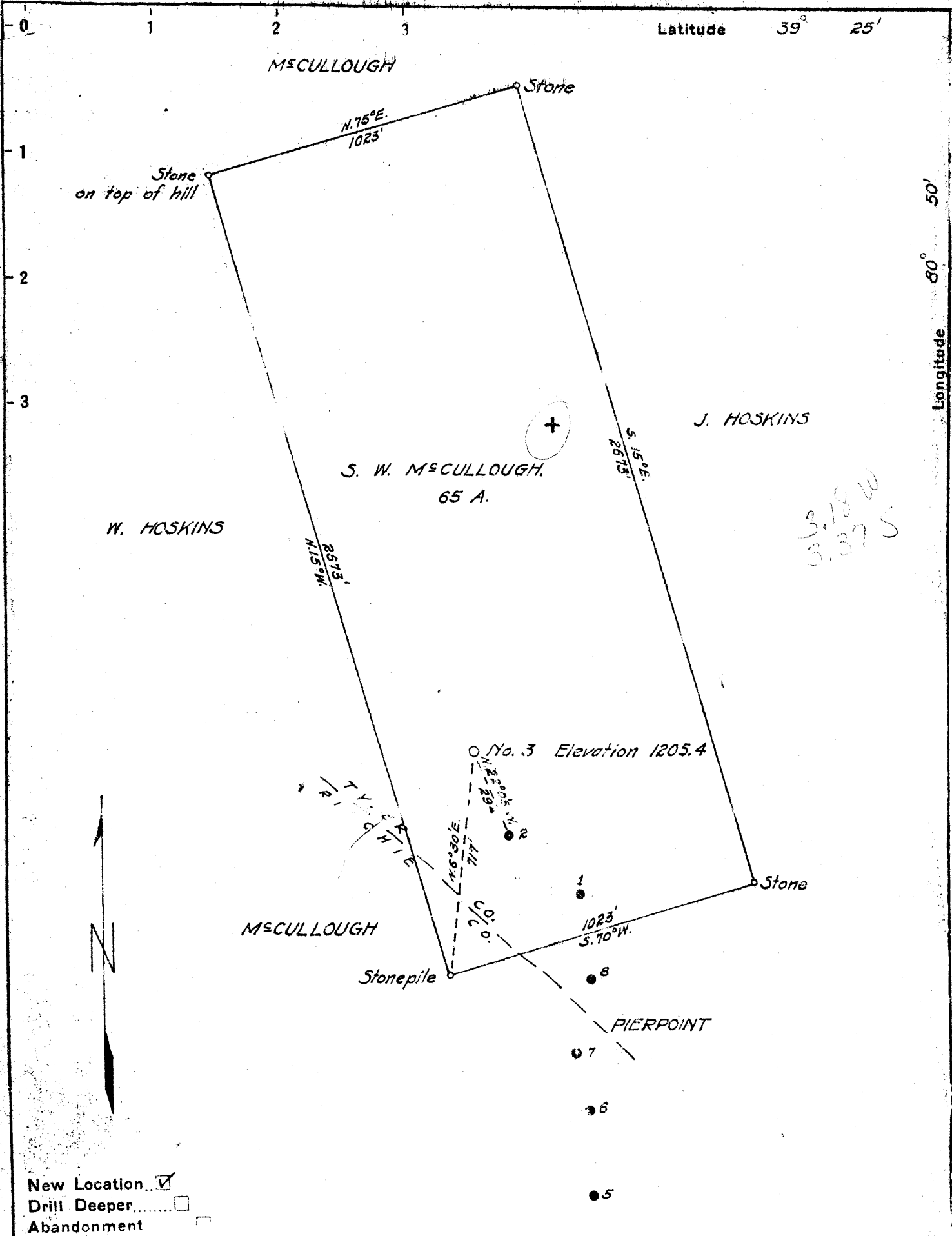


W



New Location

Drill Deeper

Abandonment

Company R E MARKLE ETAL.

Address MOUNTAIN, W. VA.

Farm S. W. M'cULLOUGH

Tract _____ Acres 65 Lease No. _____

Well (Farm) No. 3 Serial No. _____

Elevation (Spirit Level) 1205.4

Quadrangle WEST UNION

County TYLER District CENTERVILLE

Engineer B. F. RINEHART

Engineer's Registration No. 648

File No. _____ Drawing No. 780-CT

Date Sept. 20, 1950 Scale 1 in. = 400 ft.

STATE OF WEST VIRGINIA
DEPARTMENT OF MINES
OIL AND GAS DIVISION
CHARLESTON

WELL LOCATION MAP

FILE NO. JYL-188

+ Denotes location of well on United States Topographic Maps, scale 1 to 62,500, latitude and longitude lines being represented by border lines as shown.

- Denotes one inch spaces on border line of original tracing.

"IMPERIAL" TRACING CLOTH
K & E CO., N. Y.

WEST VIRGINIA DEPARTMENT OF MINES
OIL & GAS DIVISION
W E L L R E C O R D

Permit No. Tyl 188
West Union Quad.
Company
Address
Farm
Location
Well No.
District
Surface
Mineral
Commenced
Completed
Oil
Salt Water

R.E. Markle et al
Mountain, W.Va.
Sam McCullough A 65

3 Elev. 1205.4
Centerville Tyler County
Sam McCullough, Mountain, W.Va.
J.L. McCullough Heirs, Mountain, W.Va.
Oct. 5, 1950
Oct. 24, 1950
20 bbls. 1st 24 hrs.
1/2 blr. 24 hrs.

Oil Well
CASING & TUBING

	10	23	23
	8 1/2	761	
	6 5/8	1178	1178

Coal at 839 Blossom

Soil	0	10	
Sand	10	20	
Red Rock	20	50	
Slate	50	115	
Sand	115	150	
Red Rock	150	200	
Slate	200	290	
Lime	290	300	
Red Rock	300	330	
Sand	330	360	
Slate	360	400	
Red Rock	400	450	
Slate	450	520	
Red Rock	520	555	
Slate	555	580	
Sand	580	590	
Slate	590	610	
Red Rock	610	640	
Slate	640	670	
Red Rock	670	685	
Sand	685	735	
Slate & Shells	735	839	
✓ Pitts. Coal	839	840	Blossom
✓ Pitts. Lime	840	855	
Slate & Shells	855	950	
Red Rock	950	965	
Slate & Shells	965	1005	
Red Rock	1005	1035	
Slate & Shells	1035	1080	
Red Rock	1080	1086	
Slate & Shells	1086	1127	
Black Slate	1127	1145	
Pink Rock	1145	1152	
Gray Sand	1152	1189	
✓ Cow Run Sand	1189	1219	Oil
Slate	1219	1220	

Oil from 1189-1213

1205
839
2366