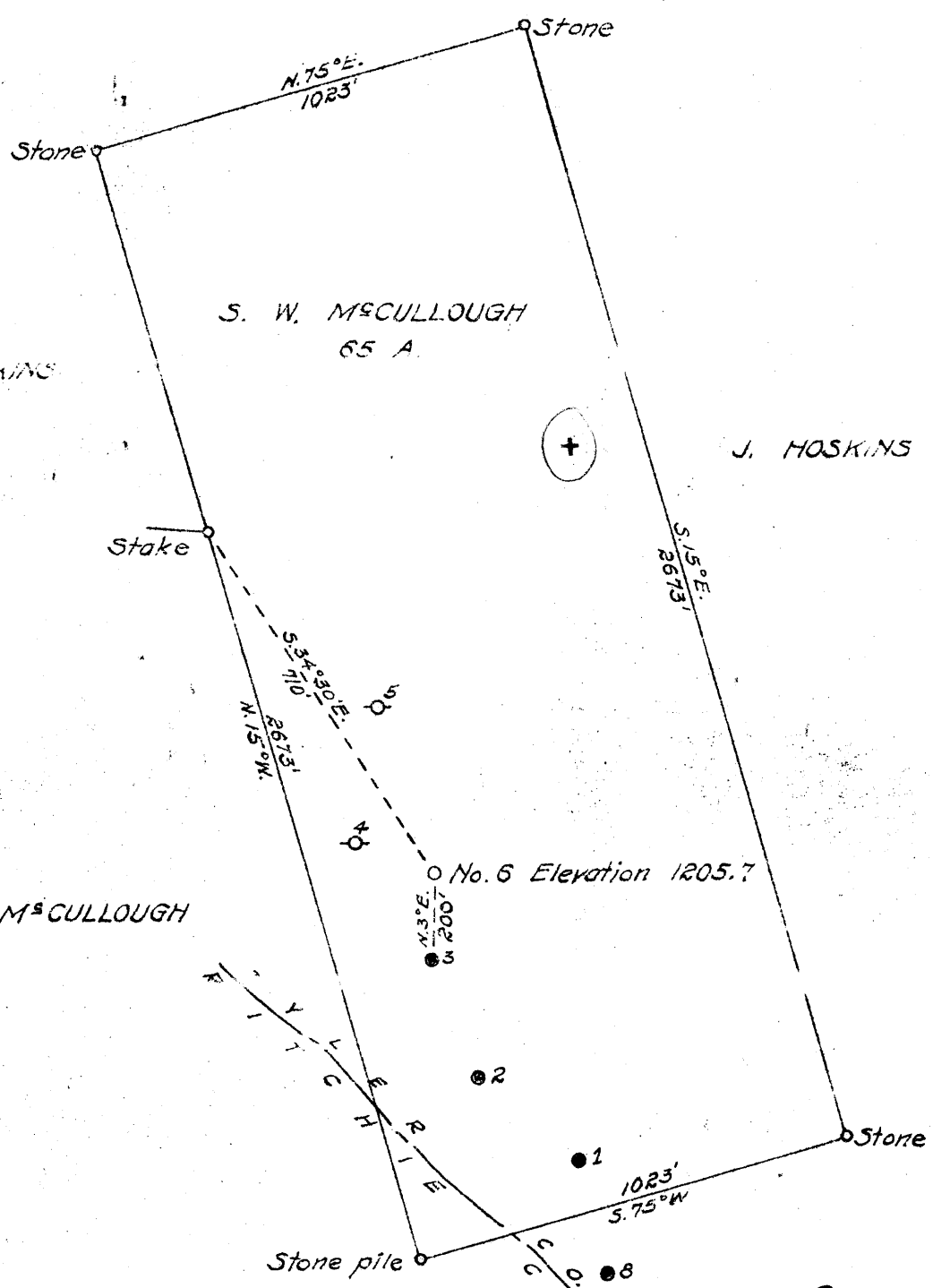


Latitude

31° 50'

Longitude 80° 50'

0 1 2 3



New Location
 Drill Deeper
 Abandonment

Company R. E. MARKLE, ETAL
 Address MOUNTAIN, W. VA.
 Farm S. W. McCULLOUGH
 Tract _____ Acres 65 Lease No. _____
 Well (Farm) No. 6 Serial No. _____
 Elevation (Spirit Level) 1205.7
 Quadrangle WEST UNION
 County TYLER District CENTERVILLE
 Engineer B. F. RINEHART
 Engineer's Registration No. 648
 File No. _____ Drawing No. 813-CT
 Date Mar. 16, 1951 Scale 1 in. = 400 ft.

STATE OF WEST VIRGINIA
 DEPARTMENT OF MINES
 OIL AND GAS DIVISION
 CHARLESTON

WELL LOCATION MAP
 FILE NO. JYL-196

+ Denotes location of well on United States Topographic Maps, scale 1 to 62,500, latitude and longitude lines being represented by border lines as shown.

- Denotes one inch spaces on border line of original tracing.

"IMPERIAL" TRADING CLOTH
 K & E CO., N. Y.

WEST VIRGINIA DEPARTMENT OF MINES
OIL & GAS DIVISION
W E L L R E C O R D

Permit No. Tyl. 196
West Union Quad.

Oil

| | | |
|-----------|------------------------------------|-----------------------|
| Company | R. E. Markle et al | CASING & TUBING |
| Address | Mountain, W. Va. | |
| Farm | S. M. McCullough Acres 65 | 10 70 70 |
| Location | Middle Island | 8 $\frac{1}{4}$ 735 |
| Well No. | 6 <u>Elev. 1205.7</u> | 6 5/8 1185 1185 |
| District | <u>Centerville</u> County - Tyler | |
| Surface | S. M. McCullough, Mountain, W. Va. | Coal at 828 to 829 |
| Mineral | J. L. McCullough Hrs., Mountain | and 836 to 837'. |
| Commenced | 4/1/51 | |
| Completed | 4/24/51 | |
| Oil | <u>6 bbls.</u> 1st 24 hrs. | |

| | | | | | |
|----------------|-----|-----|-------------------------|------|------------------|
| Sand | 0 | 15 | Slate & Shells | 850 | 945 |
| Red | 15 | 75 | Red Rock | 945 | 970 |
| Slate | 75 | 125 | Slate & Shells | 970 | 1005 |
| Red Rock | 125 | 175 | Red Rock | 1005 | 1035 |
| Lime | 175 | 200 | Slate | 1035 | 1055 |
| Slate | 200 | 250 | Red Rock | 1055 | 1060 |
| Red Rock | 250 | 300 | Slate | 1060 | 1080 |
| Sand | 300 | 325 | Red Rock | 1080 | 1090 |
| Slate | 325 | 400 | Slate & Shells | 1090 | 1130 |
| Red Rock | 400 | 500 | Black Slate | 1130 | 1140 |
| Slate | 500 | 525 | Blue Slate | 1140 | 1150 |
| Red Rock | 525 | 575 | Pink Rock | 1150 | 1158 |
| Slate & Shells | 575 | 600 | Gray Lime | 1158 | 1170 |
| Red Rock | 600 | 640 | Slate | 1170 | 1185 |
| Slate | 640 | 680 | Sand Cow Run | 1185 | 1220 |
| Red Rock | 680 | 690 | Slate | | 1220 |
| Sand | 690 | 735 | | | |
| Slate | 735 | 750 | Bottom of Hole | | 1220 |
| Sand | 750 | 775 | | | |
| Slate | 775 | 828 | | | |
| ✓Coal Pitt | 828 | 829 | | | |
| ✓Lime Pitt | 829 | 836 | Oil | | <u>1185-1220</u> |
| ✓Coal | 836 | 837 | | | |
| Lime | 837 | 850 | | | |

1206
828
837