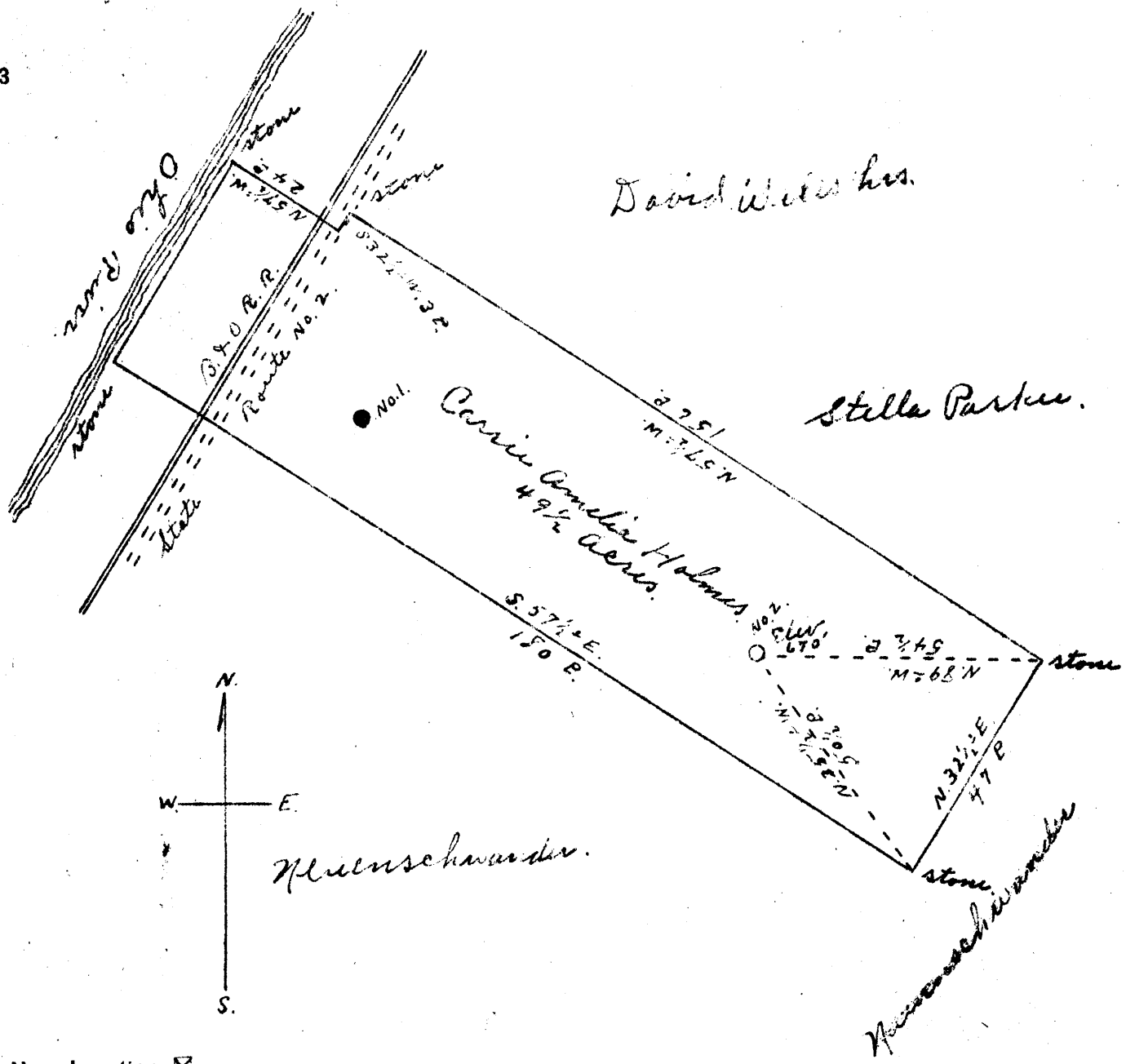


0.51 W
1.81 S
+



- New Location...
- Drill Deeper.....
- Abandonment.....

Never drilled - DEP & base

Kla 6/16/95

STATE OF WEST VIRGINIA
 DEPARTMENT OF MINES
 OIL AND GAS DIVISION
 CHARLESTON

CANC.
5/28/51

WELL LOCATION MAP
 FILE NO. JYL-200

+ Denotes location of well on United States Topographic Maps, scale 1 to 62,500, latitude and longitude lines being represented by border lines as shown.

- Denotes one inch spaces on border line of original tracing.

Company Doty Oil Company
 Address 1613 Water St Sistersville W. Va
 Farm Carrie Amelia Holmes
 Tract _____ Acres 4 9/2 Lease No. _____
 Well (Farm) No. 2 Serial No. _____
 Elevation (Spirit Level) 670'
 Quadrangle St. Marys ne
 County Tyler District Union
 Engineer Robert R. Anderson
By Jno Triplett, Surveyor
 Engineer's Registration No. 296
 File No. _____ Drawing No. _____
 Date May 14 1951 Scale 1" = 30 F.