

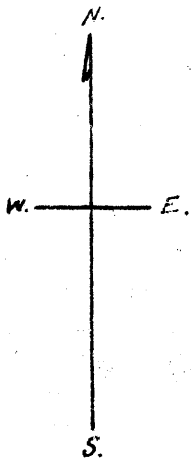
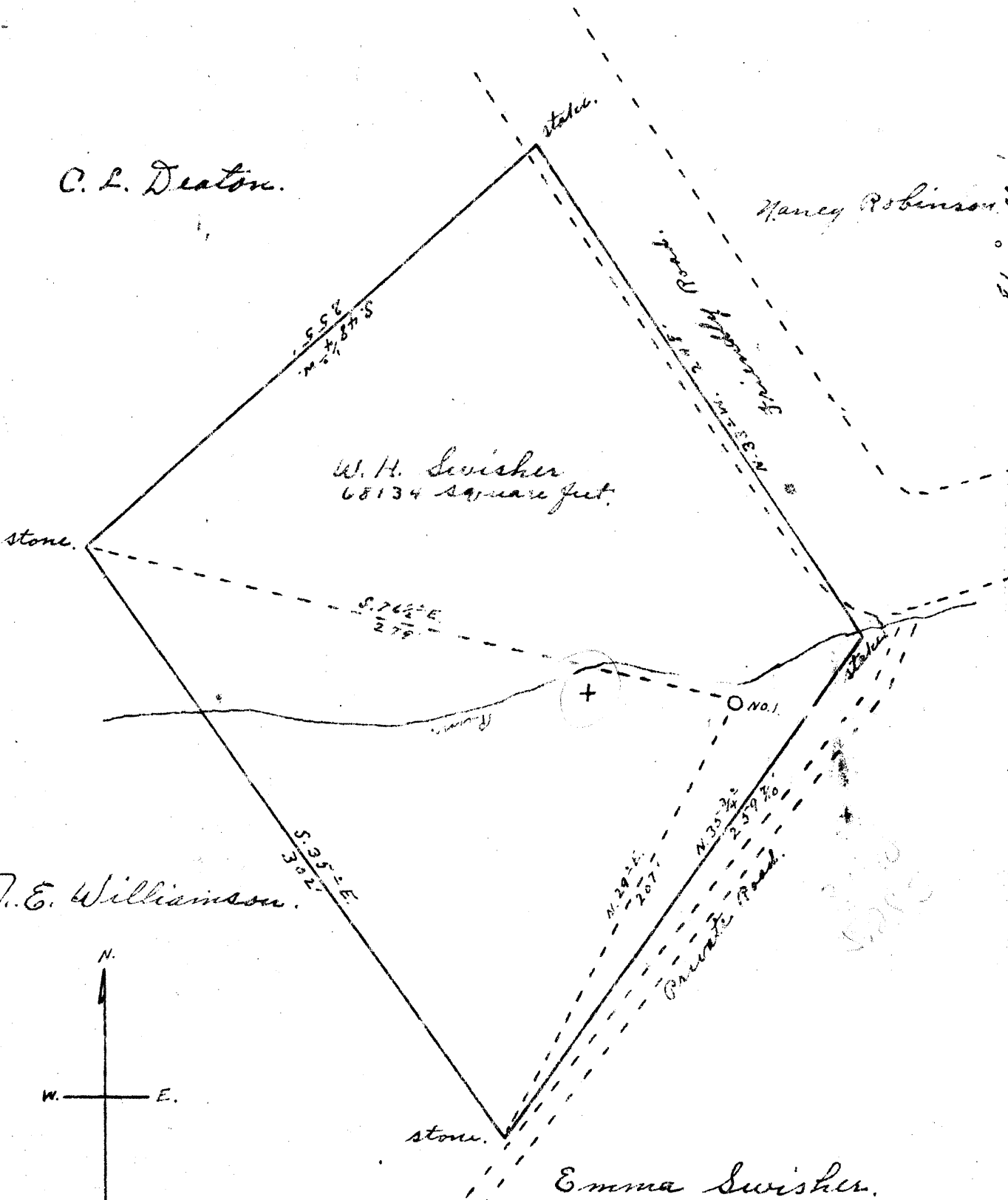
C. L. Deaton.

Nancy Robinson.

W. H. Swisher
68134 square feet.

J. E. Williamson.

Emma Swisher.



- New Location
- Drill Deeper
- Abandonment

Added July 52

Company Don E. White
 Address Parson Rock W. Va.
 Farm W. H. Swisher
 Tract Acres 68134 Lease No. _____
 Well (Farm) No. L Serial No. _____
 Elevation (Spirit Level) 810'
 Quadrangle New Matamoras
 County Tyler District Union
 Engineer Robert R. Anderson
By no triplett, Surveyor.
 Engineer's Registration No. 296
 File No. _____ Drawing No. _____
 Date Aug 1, 1951 Scale 1" = 60'

STATE OF WEST VIRGINIA
 DEPARTMENT OF MINES
 OIL AND GAS DIVISION
 CHARLESTON

WELL LOCATION MAP

FILE NO. JYL-203

+ Denotes location of well on United States Topographic Maps, scale 1 to 62,500, latitude and longitude lines being represented by border lines as shown.

- Denotes one inch spaces on border line of original tracing

WEST VIRGINIA DEPARTMENT OF MINES
OIL & GAS DIVISION
W E L L R E C O R D

Permit No. Tyl-203
New Matamoras Quad.

Oil

| | | | | |
|-------------|------------------------------------|-----------------|------------------|------|
| Company | Don E. White et al | CASING & TUBING | | |
| Address | Raven Rock, W. Va. | | | |
| Farm | W. H. Swisher Acres 2 | 10 | 10 | 10 |
| Location | Friendly Hill | 8 $\frac{1}{2}$ | 127 | 127 |
| Well No. | 1 Elev. 810' | 6 5/8 | 760 | 760 |
| District | Union County - Tyler | 5 3/16 | 1182 | 1182 |
| Surface | W. H. Swisher, Friendly, W. Va. | 2 | 1600 | 1600 |
| Mineral | Same | | | |
| Commenced | August, 1951 | | Perf. Top 1583 | |
| Completed | Sept., 1951 | | Perf. Bottom 158 | |
| Date Shot | Sept. from 1585 to 1600 | | | |
| With | 150 lbs. Gelatin | | | |
| Volume | Very light not taken | | | |
| Oil | 2 bbls. | | | |
| Fresh Water | 40 to 75' Salt Water 1165 to 1180' | | | |

| | | | | | | | |
|-------------------------------------|-------|------|------|-------------------------------------|-------|------|------|
| Clay | Light | 0 | 40 | Slate | Black | 1075 | 1108 |
| Sand | Light | 40 | 115 | Sand ^{2' salt} | Grey | 1108 | 1180 |
| Sand | Dark | 115 | 130 | Slate | Black | 1180 | 1305 |
| Red Rock | Red | 130 | 210 | Sand ^{of color} | Grey | 1305 | 1370 |
| Slate | Grey | 210 | 240 | Slate | Black | 1370 | 1410 |
| Slate | Green | 240 | 335 | Shale | Black | 1410 | 1455 |
| Sand | Grey | 335 | 350 | Sand | Grey | 1455 | 1462 |
| Slate | Black | 350 | 380 | (Maxton Sand) | | | |
| Red Rock | Red | 380 | 405 | Shale | Dark | 1462 | 1495 |
| Sand | Grey | 405 | 410 | Shale | Black | 1495 | 1523 |
| Slate | Black | 410 | 420 | Limestone | Light | 1523 | 1532 |
| Slate | White | 420 | 435 | Sand | Blue | 1532 | 1570 |
| Slate | Dark | 435 | 450 | (Keener Sand) | | | |
| Slate | Grey | 450 | 465 | Break | Dark | 1570 | 1585 |
| Red Rock | Red | 465 | 552 | Sand | White | 1585 | 1600 |
| Slate | White | 552 | 562 | (Injun Sand - Drilled into Sand | | | |
| Red | Red | 562 | 575 | 15') | | | |
| Slate | White | 575 | 620 | Bottom Hole | | 1600 | |
| Slate | Dark | 620 | 650 | | | | |
| Pink Rock | Pink | 650 | 690 | | | | |
| Slate | White | 690 | 720 | | | | |
| Slate | Dark | 720 | 740 | | | | |
| Slate | White | 740 | 780 | | | | |
| Sand | Grey | 780 | 815 | | | | |
| Slate | Black | 815 | 860 | | | | |
| Slate | White | 860 | 905 | | | | |
| Sand | Grey | 905 | 952 | | | | |
| Slate | White | 952 | 970 | | | | |
| Slate | Black | 970 | 1005 | | | | |
| Sand ^{of color} | Grey | 1005 | 1033 | | | | |
| Slate | Black | 1033 | 1050 | | | | |
| Slate | Grey | 1050 | 1075 | | | | |

1523
510

913