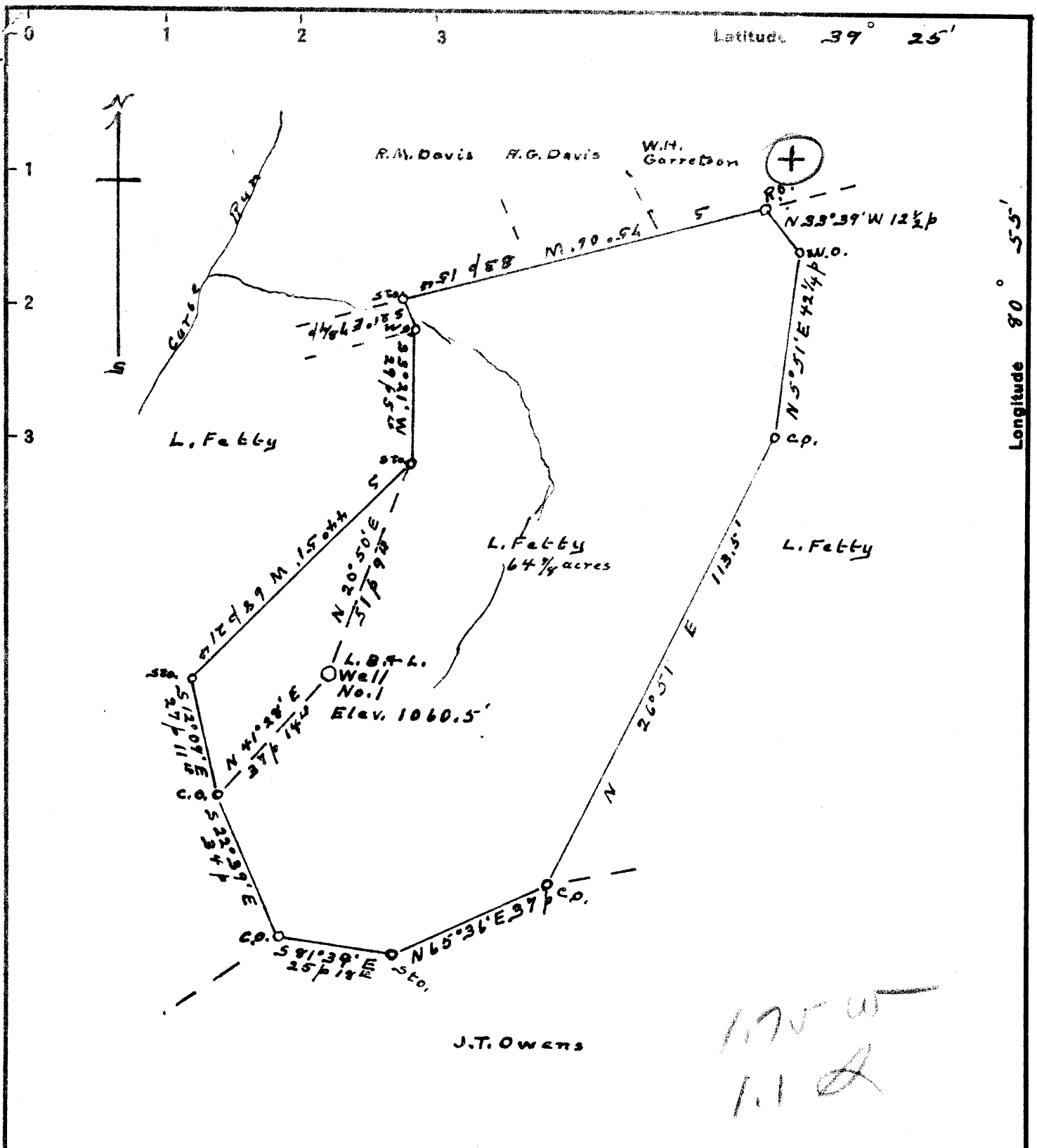


Latitude 39° 25'

Longitude 80° 55'



175 W
1.1 A

Coal Owner: L. Fetty,
Rd. 1, Middlebourne, W. Va.
Coal not operated.

(Have part 1/7/53)

JAN 19 1953

New Location
 Drill Deeper
 Abandonment

Company Lowther, Baker & Lemasters
 Address Middlebourne, W. Va.
 Farm L. Fetty
 Tract 1 Acres 64 3/4 Lease No. _____
 Well (Farm) No. L. B. & L. No 1 Serial No. _____
 Elevation (Spirit Level) 1060.5'
 Quadrangle West Union WC
 County Tyler District Meade
 Engineer J. M. Cochran
 Engineer's Registration No. Co. Surveyor
 File No. _____ Drawing No. _____
 Date Nov. 29, '52 Scale 1" = 30'

STATE OF WEST VIRGINIA
 DEPARTMENT OF MINES
 OIL AND GAS DIVISION
 CHARLESTON

WELL LOCATION MAP
 FILE NO. JYL-214

+ Denotes location of well on United States Topographic Maps, scale 1 to 62,500, latitude and longitude lines being represented by border lines as shown.
 - Denotes one inch spaces on border line of original tracing.

"IMPERIAL" TRACING CLOTH
 K & E CO., N. Y.



STATE OF WEST VIRGINIA
DEPARTMENT OF MINES
OIL AND GAS DIVISION 14

West Union

WELL RECORD

Permit No. TYL-214

Oil or Gas Well DRY
(RWD)

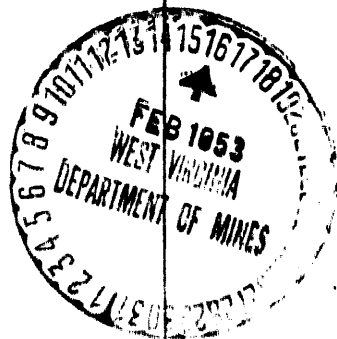
Company Lewther, Baker & Lemasters
Address Middlebourne, W. Va.
Farm Opal T. & E. M. Barker Acres 6 1/4
Location (waters) Sugar Creek
Well No. 1 Elev. 1060
District Meade County Tyler
The surface of tract is owned in fee by Opal T. and E. M. Barker Address Wick, W. Va.
Mineral rights are owned by The same et al Address Wick, W. Va.
Drilling commenced Dec. 23, 1952
Drilling completed Feb. 13, 1953
Date Shot From To
With
Open Flow /10ths Water in Inch
/10ths Merc. in Inch
Volume Cu. Ft.
Rock Pressure lbs. hrs.
Oil bbls., 1st 24 hrs.
Fresh water 601; 175 feet 1540 feet
Salt water feet feet

Casing and Tubing	Used in Drilling	Left in Well	Packers
Size			
16			Kind of Packer
18			
20			Size of
2 1/2 5 1/4	544		
6 1/2 10 9/8	1098		Depth set
5 3/16			
2			Perf. top
2			Perf. bottom
Liners Used			Perf. top
			Perf. bottom

CASING CEMENTED SIZE No. Ft. Date

COAL WAS ENCOUNTERED AT 835 FEET 0 INCHES
836 FEET 0 INCHES
FEET INCHES FEET INCHES
FEET INCHES FEET INCHES

Formation	Color	Hard or Soft	Top	Bottom	Oil, Gas or Water	Depth Found	Remarks
Red R & Sand			0	130			Water at 60'
Sand			130	175			
Red R			175	305			
Slate & Coal	Blossen		305	330			
Sand			330	365			
Red R & Lime			365	400			
Slate			400	415			
Red R			415	430			
Slate			430	440			
Red Lime			440	450			
Sand			450	523			Water at 475
Slate			523	525			
Sand			525	542			
Slate			542	550			
Lime			550	565			
Red R			565	575			
Slate			575	580			
Red R			580	590			
Lime			590	635			
Red R			635	650			
Sand			650	690			
Slate			690	715			
Red R			715	735			
Shale			735	750			
Lime			750	780			
Coal			835	836			
Slate			836	875			
Red R			875	995			
Slate			995	1010			
Sand			1010	1040			
Slate			1040	1075			
Red R			1075	1091			
Sand			1091	1112			
Black Lime			1112	1124			
Red R			1124	1155			
Black Lime			1155	1170			
Slate			1170	1200			
Lime			1200	1230			
Black shale			1230	1245			



Formation	Color	Hard or Soft	Top	Bottom	Oil, Gas or Water	Depth Found	Remarks
Pink Rock			1245	1250			
Blue			1250	1320			
Slates			1320	1425			
Sand			1425	1561			Water at 1540 ft.
			TOTAL DEPTH	1561			

Date, 19...

APPROVED _____, Owner

By _____

(Title)