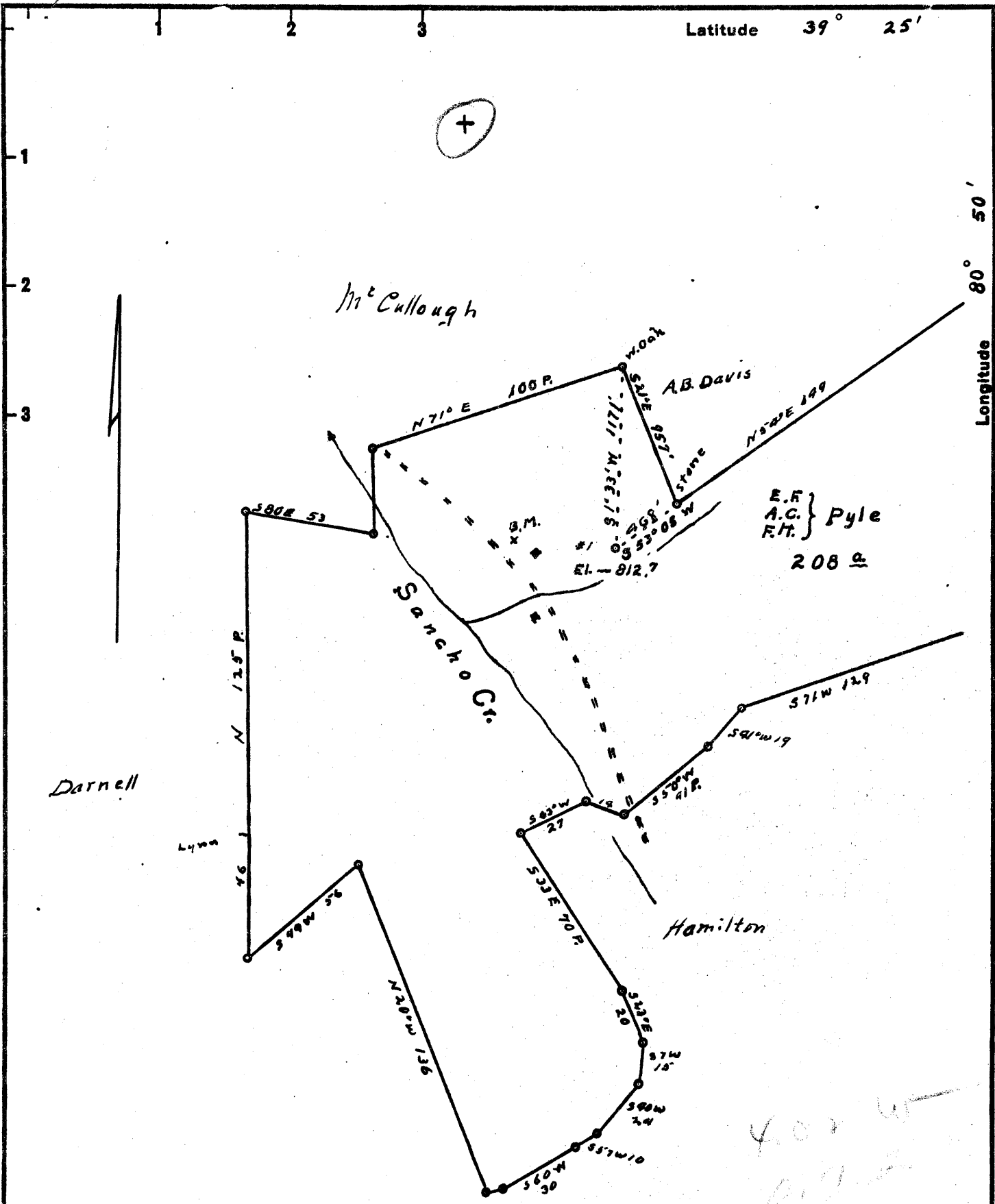


Latitude 39° 25'

Longitude 80° 50'



E.F.
A.C. } Pyle
F.H. }
208 a

New Location...
 Drill Deeper.....
 Abandonment.....

JAN 19 1953

Company E. G. Hartman et al
 Address 625 Avery St Parkersburg, W. Va.
 Farm E.F., A.C. & F.H. Pyle
 Tract _____ Acres 208 Lease No. _____
 Well (Farm) No. 1 Serial No. _____
 Elevation (Spirit Level) 812.7
 Quadrangle West Union
 County Tyler District Centerville
 Engineer Robert R. Anderson
 Engineer's Registration No. 296
 File No. _____ Drawing No. _____
 Date Dec 29 52 Scale 1 in = 50 Poles

STATE OF WEST VIRGINIA
 DEPARTMENT OF MINES
 OIL AND GAS DIVISION
 CHARLESTON

WELL LOCATION MAP
 FILE NO. JYL-215

+ Denotes location of well on United States Topographic Maps, scale 1 to 62,500, latitude and longitude lines being represented by border lines as shown.

- Denotes one inch spaces on border line of original tracing.

K&E 150 IMPERIAL TRACING CLOTH T.M.

Bearsville (366) 6-6 0

E. F., A. C., & F. H. PYLE No. 1 - E. G. HARTMAN ET AL. - TYL-215



STATE OF WEST VIRGINIA
DEPARTMENT OF MINES
OIL AND GAS DIVISION

West Union

WELL RECORD

Permit No. TYL-215

Oil or Gas Well Oil
(KIND)

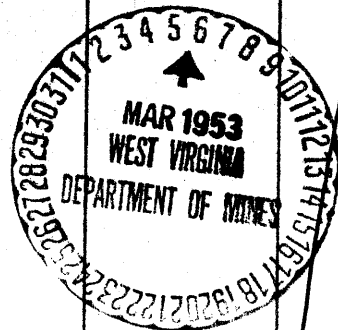
Company Gen-Tyler Oil Co.
Address 418 Avery St., Parkersburg, W. Va.
Farm B. L. Pyle Heirs Acres 208
Location (waters) Sancho Creek
Well No. 1 Elev. 812.7'
District Centerville County Tyler
The surface of tract is owned in fee by H. F., A. C. & F. H. Pyle Address Bearsville, W. Va.
Mineral rights are owned by Same Address _____

Casing and Tubing	Used in Drilling	Left in Well	Packers
Size			Kind of Packer
16			Anchor
18			Size of
10	<u>950'</u>		6 5/8 x 8 1/4"
8 1/2	<u>1033'</u>		Depth set
6 1/2	<u>1700'</u>	<u>1700'</u>	1670'
5 3/16			Perf. top
3			Perf. bottom
2		<u>1700'</u>	Perf. top
Liners Used			Perf. bottom

Drilling commenced _____
Drilling completed 2-26-53
Date Shot 2-26-53 From 1678' To 1690'
With _____
Open Flow /10ths Water in _____ Inch
/10ths Merc. in _____ Inch
Volume _____ Cu. Ft.
Rock Pressure _____ lbs. _____ hrs.
Oil 4 bbls., 1st 24 hrs.
Fresh water 30 feet _____ feet
Salt water 1282 feet _____ feet

CASING CEMENTED _____ SIZE _____ No. Ft. _____ Date _____
COAL WAS ENCOUNTERED AT None FEET _____ INCHES
_____ FEET _____ INCHES FEET _____ INCHES
_____ FEET _____ INCHES FEET _____ INCHES

Formation	Color	Hard or Soft	Top	Bottom	Oil, Gas or Water	Depth Found	Remarks
Surface			0	22			
Sand			22	35			
Red Rock			35	40			
Limestone			40	90			
Red Rock			90	180			
Limestone			180	150			
Slate			150	200			
Limestone			200	256			
Slate			256	240			
Limestone			240	280			
Slate			280	287			
Sand			287	300			
Slate			300	307			
Limestone			307	315			
Red Rock			315	320			
Limestone			320	387			
Slate			387	430			
Sand			430	456			
Slate			456	496			
Limestone, Pittsburgh			496	509			
Coal, Pittsburgh			509	510			
Slate			510	512			
Limestone			512	519			
Slate			519	523			
Limestone			523	539			
Slate			539	570			
Red Rock			570	597			
Limestone			597	609			
Slate			609	619			
Limestone			619	636			
Slate			636	650			
Limestone			650	653			
Red Rock			653	695			
Limestone			695	705			
Red Rock			705	770			
Limestone			770	790			
Slate			790	795			



813
509
304

Formation	Color	Hard or Soft	Top	Bottom	Oil, Gas or Water	Depth Found	Remarks
Limestone			795	812			
Slate			812	820			
Red Rock			820	850			
Limestone			850	880			
XXXXXX Slate			880	905			
Red Rock			905	926			
Slate			926	975			
Sand			975	983			
Limestone			983	1000			
Sand			1000	1013			
Slate			1013	1019			
Pink Rock			1019	1030			
Gas Sand			1030	1043			
Limestone			1043	1057			
Slate			1057	1060			
Limestone			1060	1075			
Slate & Shells			1075	1099			
Limestone			1099	1114			
Slate			1114	1115			
Limestone			1115	1130			
First Salt Sand			1130	1165			
Limestone			1165	1172			
Slate			1172	1175			
Second Salt Sand			1175	1228			
Slate			1228	1232			
Limestone (Broken)			1232	1255			
Third Salt Sand			1255	1380	Salt Water 1282'		
Limestone			1380	1385			
Sand & Lime			1385	1463			
Slate			1463	1466			
Limestone, Sandy			1466	1483			
Slate & Shells			1483	1541			
Sand			1541	1542			
Lime, Black			1542	1678			
Blue Monday			1678	1695	Oil - 1678-90'		
Big Lime			1695	1755			
Irjun Sand			1755	1859	Gas Show - 1837-80'		
Slate			1859	1876			
Sand, Squaw			1876	1926			
Slate			1926	1930	Total Depth - 1930'		
Hole plugged back to 1700'							

1255
813
442

1678
813
865

1755
813
942

Date March 5th, 1953

APPROVED CEN-TYLER OIL CO., Owner

By C. E. Hartman
(Title) **Partner**