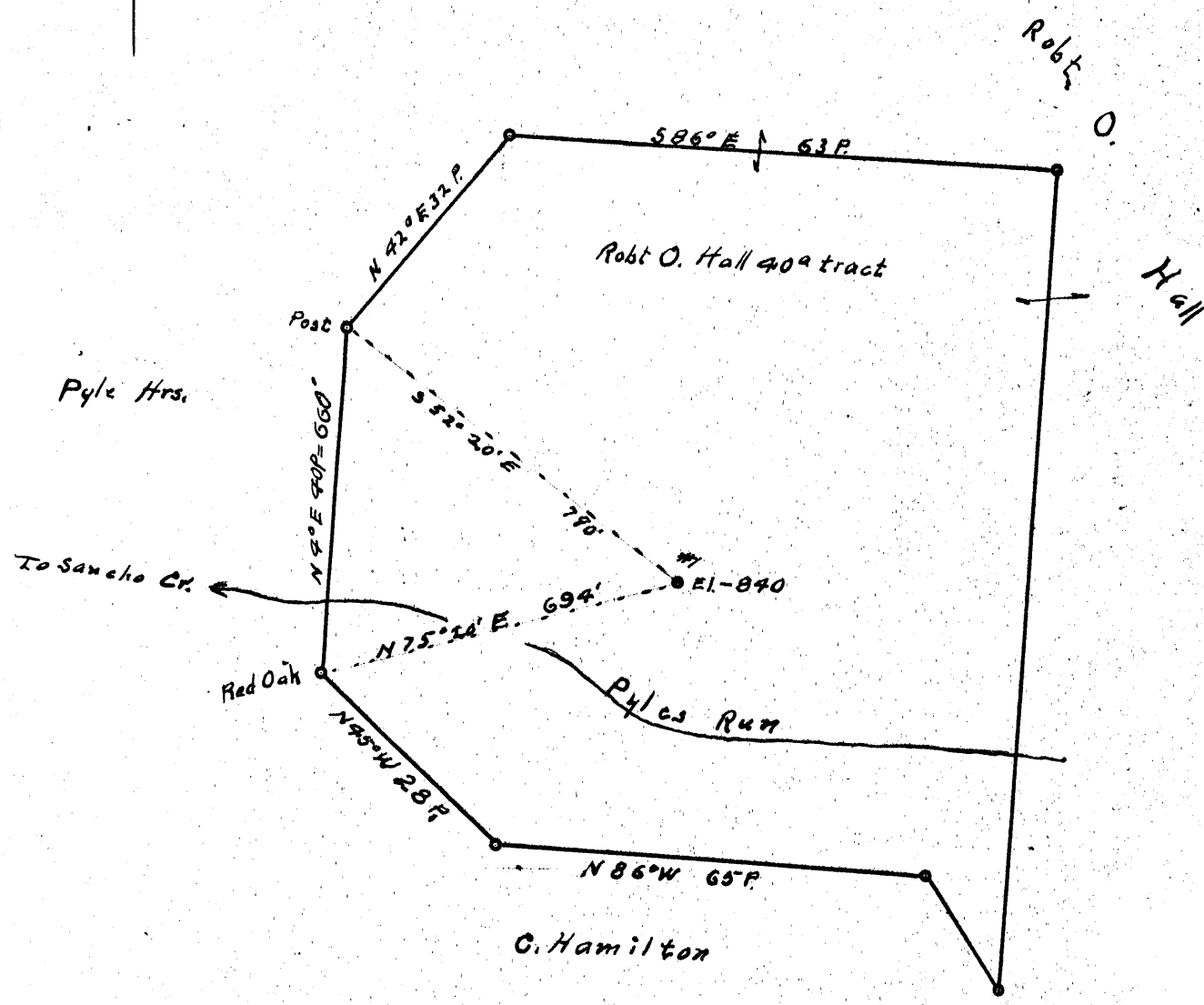


7M

Latitude 39° 25'

Longitude 80° 50'

0.825
3.43 W



New Location.
 Drill Deeper.....
 Abandonment.....

Company Gen-Tyler Oil Co.
 Address 418 Avery St Parkersburg, W. Va.
 Farm Robt O. Hall
 Tract _____ Acres 40 Lease No. _____
 Well (Farm) No. 1 Serial No. _____
 Elevation (Spirit Level) 840'
 Quadrangle West Union
 County Tyler District Central
 Engineer Robert R. Anderson
 by O. Meredith C. H. Parkersburg W. Va.
 Engineer's Registration No. 296
 File No. _____ Drawing No. _____
 Date 9/10 53 Scale 1/111 = 20 Poles

STATE OF WEST VIRGINIA
 DEPARTMENT OF MINES
 OIL AND GAS DIVISION
 CHARLESTON

WELL LOCATION MAP
 FILE NO. JYL-226

+ Denotes location of well on United States Topographic Maps, scale 1 to 62,500, latitude and longitude lines being represented by border lines as shown.
 - Denotes one inch spaces on border line of original tracing.

5-00

STATE OF WEST VIRGINIA
DEPARTMENT OF MINES
OIL AND GAS DIVISION

West Union

WELL RECORD

Permit No. Tyl- 226

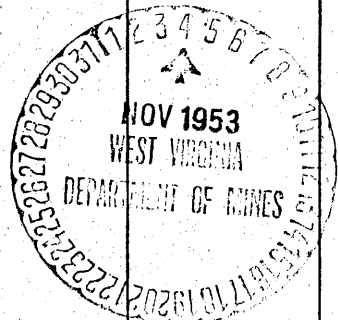
Oil or Gas Well DRY
(KIND)

Company CEN-TYLER OIL CO.
Address 418 Avery St. Parkersburg, W. Va.
Farm R.O. Hall Acres 90
Location (waters) Sancho
Well No. 1. Elev. 840'
District CENTERVILLE County TYLER
The surface of tract is owned in fee by R.O. Hall
Middlebourne Address _____
Mineral rights are owned by Same as above
Address _____
Drilling commenced October 8, 1953
Drilling completed October 27, 1953
Date Shot _____ From _____ To _____
With _____
Open Flow _____ /10ths Water in _____ Inch
_____ /10ths Merc. in _____ Inch
Volume _____ Cu. Ft.
Rock Pressure _____ lbs. _____ hrs.
Oil _____ bbls., 1st 24 hrs.
Fresh water 26 feet _____ feet
Salt water _____ feet _____ feet

| Casing and Tubing | Used in Drilling | Left in Well | Packers |
|-------------------|------------------|--------------|----------------|
| Size | | | |
| 16 | | | Kind of Packer |
| 13 | | | |
| 10 | 236 | | Size of |
| 8 1/4 | 1064 | | |
| 6 5/8 | 1748 | | Depth set |
| 5 3/16 | | | |
| 3 | | | Perf. top |
| 2 | | | Perf. bottom |
| Liners Used | | | Perf. top |
| | | | Perf. bottom |

CASING CEMENTED _____ SIZE _____ No. Ft. _____ Date _____
COAL WAS ENCOUNTERED AT _____ FEET _____ INCHES
_____ FEET _____ INCHES FEET _____ INCHES
_____ FEET _____ INCHES FEET _____ INCHES

| Formation | Color | Hard or Soft | Top | Bottom | Oil, Gas or Water | Depth Found | Remarks |
|----------------|-------|--------------|-----|--------|-------------------|-------------|---------|
| Red Rock | | | 0 | 20 | | | |
| Sand | | | 20 | 25 | | | |
| Lime & Sand | | | 25 | 100 | water | 26' | |
| Red Rock | | | 100 | 125 | | | |
| Slate | | | 125 | 140 | | | |
| Sand | | | 140 | 170 | | | |
| Slate | | | 170 | 180 | | | |
| Red Rock | | | 180 | 200 | | | |
| Lime | | | 200 | 215 | | | |
| Red Rock | | | 215 | 225 | | | |
| Lime | | | 225 | 231 | | | |
| Red Rock | | | 231 | 268 | | | |
| Sand | | | 268 | 284 | | | |
| Slate | | | 284 | 317 | | | |
| Lime | | | 317 | 320 | | | |
| Red Rock | | | 320 | 330 | | | |
| Lime | | | 330 | 340 | | | |
| Red Rock | | | 340 | 362 | | | |
| Lime | | | 362 | 425 | | | |
| Slate | | | 425 | 468 | | | |
| Sand | | | 468 | 485 | | | |
| Slate | | | 485 | 510 | | | |
| Red Rock | | | 510 | 519 | | | |
| Slate | | | 519 | 540 | | | |
| Lime | | | 540 | 590 | | | |
| Slate | | | 590 | 600 | | | |
| Red Rock | | | 600 | 615 | | | |
| Slate & Shells | | | 615 | 655 | | | |
| Red Rock | | | 655 | 670 | | | |
| Lime | | | 670 | 690 | | | |
| Red Rock | | | 690 | 697 | | | |
| Lime | | | 697 | 735 | | | |
| Red Rock | | | 735 | 770 | | | |
| Lime & Slate | | | 770 | 788 | | | |
| Red Rock | | | 788 | 795 | | | |
| Sand (C.R.) | | | 795 | 810 | | | |
| Slate | | | 810 | 825 | | | |
| Lime | | | 825 | 857 | | | |
| Red Rock | | | 857 | 894 | | | |



| Formation | Color | Hard or Soft | Top | Bottom | Oil, Gas or Water | Depth Found | Remarks |
|----------------|-------|--------------|------|--------|-------------------|-------------|---------|
| Lime | | | 894 | 915 | | | |
| Slate | | | 915 | 935 | | | |
| Pink Rock | | | 935 | 950 | | | |
| Sand | | | 950 | 968 | | | |
| Slate & Shells | | | 968 | 998 | | | |
| Lime | | | 998 | 1021 | | | |
| Slate | | | 1021 | 1022 | | | |
| Sand | | | 1022 | 1044 | | | |
| Pink Rock | | | 1044 | 1063 | | | |
| Sand | | | 1063 | 1073 | | | |
| Slate | | | 1073 | 1078 | | | |
| Lime | | | 1078 | 1145 | | | |
| 1st Salt Sand | | | 1145 | 1184 | | | |
| Slate | | | 1184 | 1189 | | | |
| Lime | | | 1189 | 1200 | | | |
| 2nd Salt Sand | | | 1200 | 1255 | | | |
| Slate & Shells | | | 1255 | 1275 | | | |
| Lime | | | 1275 | 1285 | | | |
| 3rd Salt Sand | | | 1285 | 1370 | | | |
| Slate & Shells | | | 1370 | 1388 | | | |
| Sand | | | 1388 | 1422 | | | |
| Slate & Shells | | | 1422 | 1650 | | | |
| Lime | | | 1650 | 1660 | | | |
| Slate & Lime | | | 1660 | 1680 | | | |
| Sand Shell | | | 1680 | 1685 | | | |
| Lime | | | 1685 | 1688 | | | |
| Blue Monday | | | 1688 | 1723 | | | |
| Pencil Cave | | | 1723 | 1725 | | | |
| Big Lime | | | 1725 | 1749 | | | |
| "Break" | | | 1749 | 1750 | | | |
| Big Lime | | | 1750 | 1791 | | | |
| Injun Sand | | | 1791 | 1895 | | | |
| Squaw Sand | | | 1895 | 1942 | | | |
| Black Slate | | | 1942 | 1950 | | | |
| TOTAL DEPTH | | | 1950 | 1950 | | | |

Date Oct. 28, 1953, 19

APPROVED CEN - TYLER OIL CO., Owner