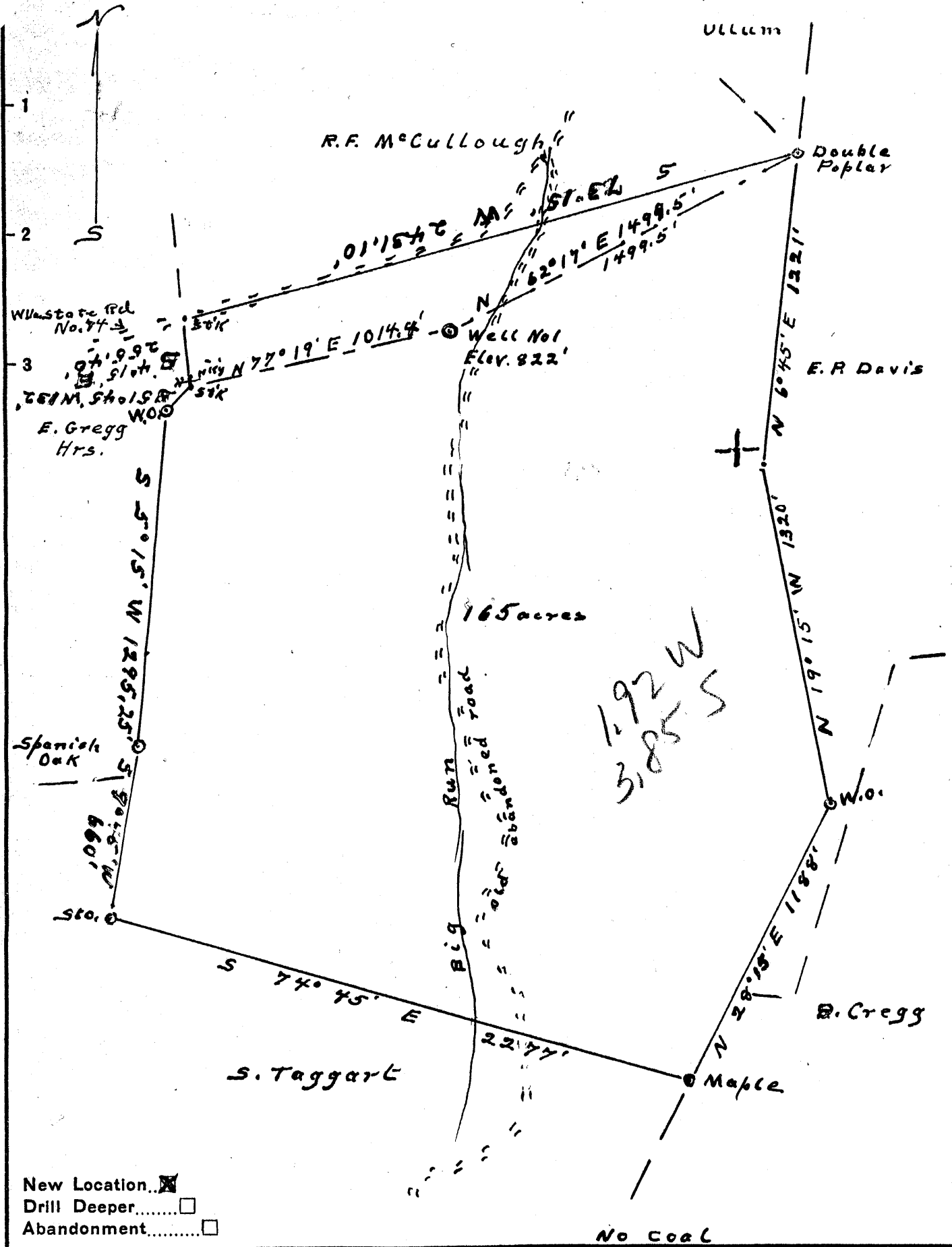


Latitude 39° 25'

Longitude 80° 50'



- New Location...
- Drill Deeper.....
- Abandonment.....

No Coal

Company O. D. Bashford
 Address 744 Commonwealth Ave N.E. Massillon, Ohio.
 Farm W. D. Davis
 Tract 1 Acres 165 Lease No. 1
 Well (Farm) No. 1 Serial No. _____
 Elevation (Spirit Level) 822'
 Quadrangle West Union - C
 County Tyler District Centreville
 Engineer J. M. Cochran
 Engineer's Registration No. Cochran
 File No. 12 Drawing No. 2
 Date Oct. 14, '54 Scale 1" = 495'

STATE OF WEST VIRGINIA
 DEPARTMENT OF MINES
 OIL AND GAS DIVISION
 CHARLESTON

WELL LOCATION MAP
 FILE NO. JYL-231

+ Denotes location of well on United States Topographic Maps, scale 1 to 62,500, latitude and longitude lines being represented by border lines as shown.

- Denotes one inch spaces on border line of original tracing.

5-0-0

W. D. DAVIS NO. 1 WELL.

Centerville District, Tyler County, W. Va.

By O. D. Bashford, 744 Commonwealth Ave., N. E., Massillon, Ohio.

Drilled under permit Tyl-231.

Elevation, 822' L.

Located 3.85 mi. S. of 39° 25' and 1.92 mi. W. of 80° 50' - C - West
Union Quadrangle.

Sample record from Flowers Feb. 16, 1955.

Top. Bottom. Thickness.

Top.	Bottom.	Thickness.	
MAUCH CHURNK, 29+ FEET			
1594 -	1616	22	Limestone, dark-gray to brownish-black, argillaceous, highly argillaceous in the upper part, fossiliferous (occasional crinoid stem fragments)
1616 -	1623	7	Shale, dark-gray, soft, fossiliferous
GREENERIER LIMESTONE, 112 FEET			
1623 -	1633	10	Limestone, light olive gray to brownish-gray
1633 -	1689	56	Not described
1689 -	1695	6	Limestone, dark-gray to brownish-black, very highly argillaceous; some dark-gray shale
1695 -	1699	4	Sandstone, very light gray to brownish-gray, fine-grained, some medium grains, very highly calcareous, dolomitic, rounded
1699 -	1703	4	Sandstone, light-gray, very fine to fine-grained, rounded, somewhat calcareous
1703 -	1714	11	Sandstone, very light to light-gray, fine-grained, with some medium grains at top to very fine and fine-grained at the bottom, very slightly calcareous, rounded to well-rounded
1714 -	1735	21	Sandstone (dolomitic) to dolomite (very sandy), very light gray, very fine to medium-grained, rounded to well-rounded, silty
POCONO FORMATION, 110+ FEET			
1735 -	1748	13	Sandstone, light-gray, very fine to fine-grained, silty, somewhat argillaceous, subangular
1748 -	1752	4	Sandstone, very light gray, very fine grained
1752 -	1761	9	Sandstone, very light to light-gray, fine-grained and some medium grains at the top, very fine grained in the middle part, very fine to fine-grained at the bottom, subangular
1761 -	1774	13	Sandstone, very light to light-gray, very fine grained some fine-grained at the bottom
1774 -	1795	21	Sandstone, very light to light-gray, fine-grained in the upper part, very fine to fine-grained in lower part
1795 -	1819	24	Sandstone, very light to light-gray, very fine grained at the bottom, very fine to fine-grained in middle and lower part, oil show, 1813-1819'
1819 -	1837	18	Sandstone, light-gray, very fine to fine-grained, contains argillaceous and micaceous detrital material; oil show; some dark-gray micaceous shale with carbonaceous specks
1837 -	1841	4	No sample
1841 -	1844	3	Sandstone, very light gray, fine- to medium-grained, subangular, very strong test for oil; large amount of dark-gray shale



STATE OF WEST VIRGINIA
DEPARTMENT OF MINES
OIL AND GAS DIVISION 18

West Union

WELL RECORD

Permit No. Tyler-231

Oil or Gas Well Dry
(KIND)

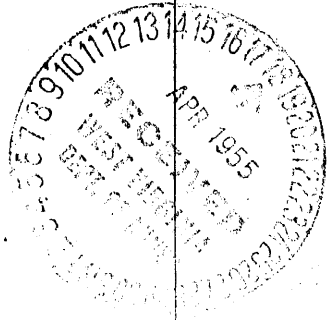
Company O.D. BASHFORD ~~Delbert Bachelor~~
O.D. Bashford
Address Mountain, WVa.
Farm W. D. Davis Acres 160
Location (waters) _____
Well No. 1 Elev. 822'
District Centerville County Tyler
The surface of tract is owned in fee by
W. D. Davis Address Mountain, WVa.
Mineral rights are owned by W. D. Davis
Address Mountain, WVa.

Drilling commenced Nov. 15, 1954
Drilling completed Dec. 21, 1954
Date Shot 1/4/55 From 1799' To 1809'
With 30 quarts Nitro
Open Flow /10ths Water in _____ Inch
/10ths Merc. in _____ Inch
Volume 10,000 ft. of gas Cu. Ft.
Rock Pressure 25 lbs. _____ hrs.
Oil 2/3 rds bbls., 1st 24 hrs.
Fresh water None feet _____ feet
Salt water 3 lb feet 1802-1805 feet

Casing and Tubing	Used in Drilling	Left in Well	Packers
Size			
16			Kind of Packer
13			
10	<u>174</u>		Size of
8 1/4	<u>954</u>		
6 5/8			Depth set
5 3/16	<u>1643</u>		
3			Perf. top
2			Perf. bottom
Liners Used			Perf. top
			Perf. bottom

CASING CEMENTED No SIZE _____ No. Ft. _____ Date _____
GOAL WAS ENCOUNTERED AT 525 FEET 2 INCHES BLOSSOM
____ FEET _____ INCHES _____ FEET _____ INCHES
____ FEET _____ INCHES _____ FEET _____ INCHES

Formation	Color	Hard or Soft	Top	Bottom	Oil, Gas or Water	Depth Found	Remarks
Gravel			Surface	20'			
Red rock			20'	35'			
Slate			35'	60'			
Red rock			60'	95'			
Slate			95'	110'			
Sand			110'	130'			
Slate			130'	150'			
Red rock			150'	160'			
Sand			160'	172'			
Slate			172'	200'			
Red rock			200'	250'			
Slate & shells			250'	290'			
Sand			290'	350'			
Slate & Shells			350'	420'			
Lime			420'	425'			
Coal (Blossom)			425'	426'			
Lime			426'	445'			
Slate & Shells			445'	535'			
Pink rock			535'	545'			
Slate & Shells			535'	595'			
Red rock			595'	640'			
Slate & shells			640'	680'			
Sand			680'	715'			
Slate & shells			715'	740'			
Sand			740'	760'			
Slate & shells			760'	775'			
Pink rock			775'	780'			
Slate & shells			780'	785'			
Sand			785'	944'			
Slate			944'	1000'			
Sand			1000'	1050'			
Slate & shells			1050'	1075'			
Sand			1075'	1105'			
Slate & shells			1105'	1140'			
Sand			1140'	1205'			
Slate & shells			1205'	1220'			
Sand			1220'	1305'			



Fract. 1955
1623
822
201

Formation	Color	Hard or Soft	Top ¹⁸	Bottom	Oil, Gas or Water	Depth Found	Remarks
Slate & shells			1305'	1345'			
?Sand			1345'	1358'			
Slate			1358'	1395'			
✓Sand ^{3A} Sand			1395'	1450'			
Black Slate			1450'	1577'			
Red rock			1577'	1585'			
Slate			1585'	1596'			
✓Lime ¹⁶¹⁷			1596'	1617'			
✓Slate (pencil)			1617'	1631'			
✓Lime ¹⁶³¹			1631'	1697'			
✓Sand ¹⁶⁹⁷ Sand			1697'	1841'			
Slate			1841'	1843'	Gas Oil	1799 to 1809 1802 to 1805	
Total Depth				1843'			

Date _____, 194_____

APPROVED _____