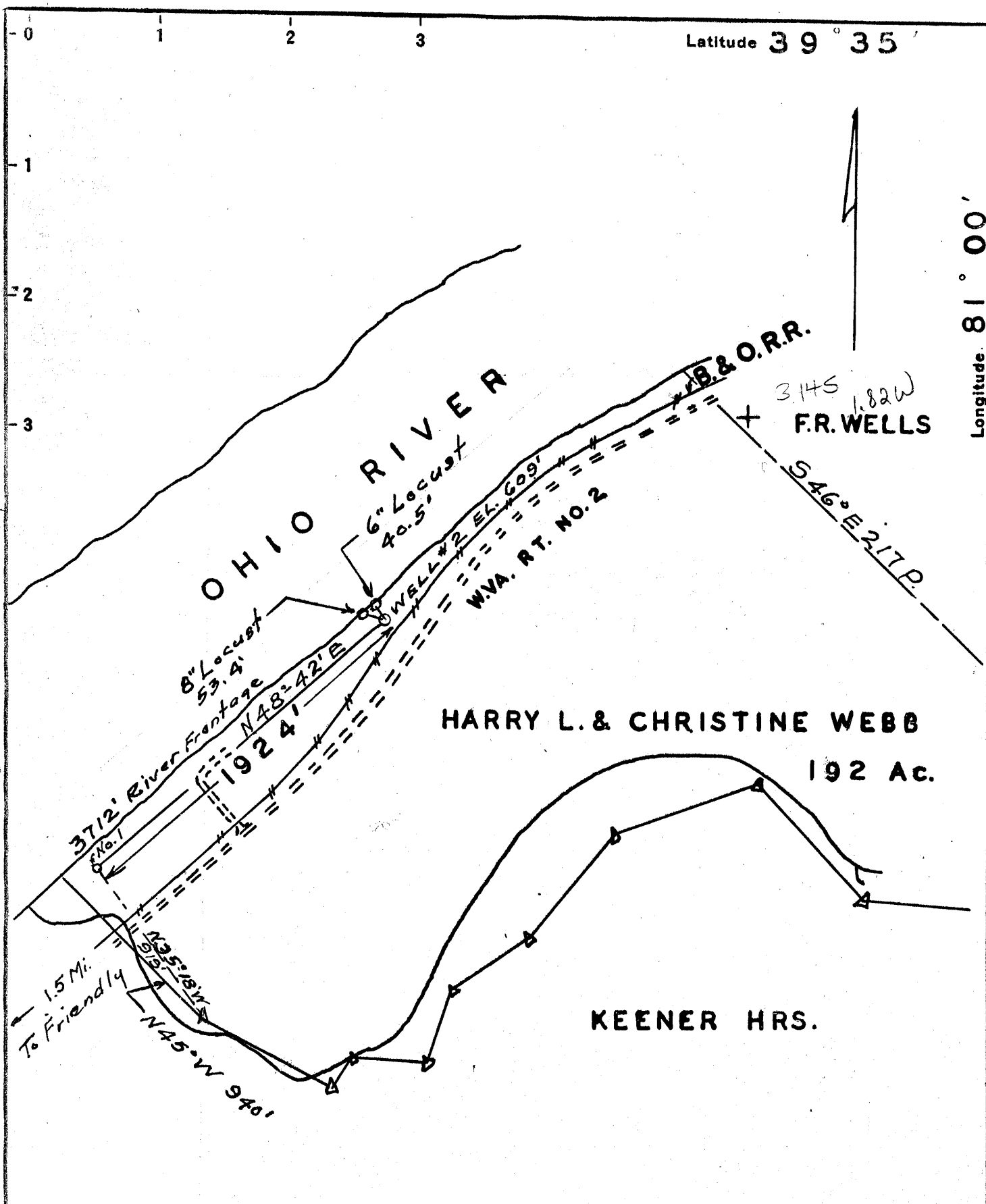


Latitude 39° 35'

Longitude 81° 00'



- New Location...
- Drill Deeper.....
- Abandonment.....

never drilled - WVDEP database

6/19/95 Kla Conc 12/30/54
 STATE OF WEST VIRGINIA
 DEPARTMENT OF MINES
 OIL AND GAS DIVISION
 CHARLESTON

Company **DR. ERNEST A. STRAKOSCH**
 Address *J.H. MCGOY, Agent, Sistersville, W.Vo.*
 Farm **HARRY L. & CHRISTINE WEBB**
 Tract _____ Acres **192** Lease No. _____
 Well (Farm) No. **2** Serial No. _____
 Elevation (Spirit Level) **609**
 Quadrangle **NEW MATAMORAS SE**
 County **TYLER** District **UNION**
 Engineer *E.M. Cattle*
 Engineer's Registration No. **889**
 File No. _____ Drawing No. _____
 Date **12-15-54** Scale **1" = 660'**

WELL LOCATION MAP
 FILE NO. **JYL-233**

DIRECTIONAL DRILLING
 + Denotes location of well on United States Topographic Maps, scale 1 to 62,500, latitude and longitude lines being represented by border lines as shown.
 - Denotes one inch spaces on border line of original tracing.