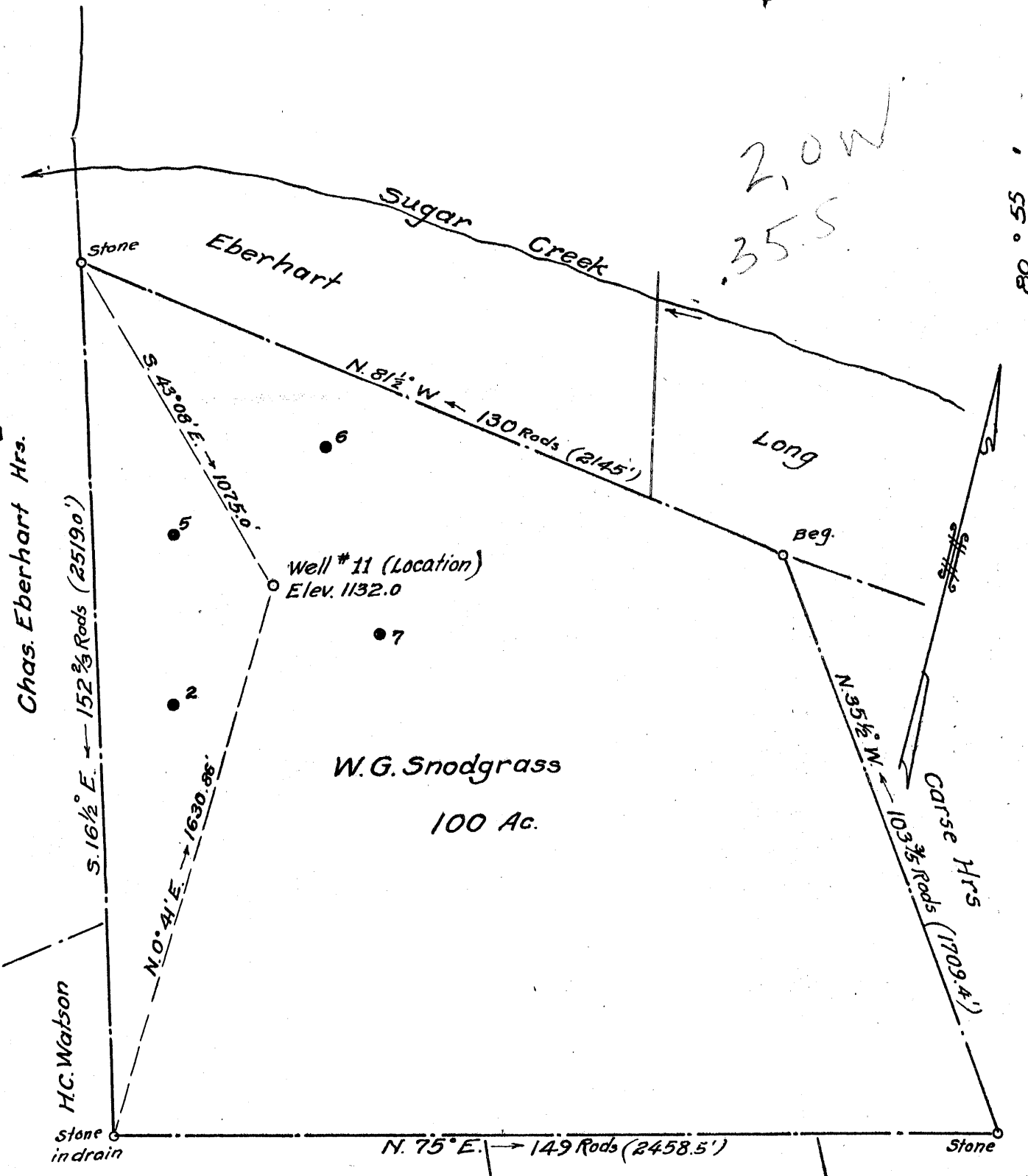


Latitude 39° 25'

Longitude 80° 55'

2.0W  
35.5



New Location...    
 Drill Deeper.....    
 Abandonment.....

Company GEORGE C. SCHOONMAKER  
 Address Room 15, Davis Bldg., St. Marys, W. Va.  
 Farm W. G. Snodgrass  
 Tract \_\_\_\_\_ Acres 100 Lease No. \_\_\_\_\_  
 Well (Farm) No. 11 Serial No. \_\_\_\_\_  
 Elevation (Spirit Level) 1132.0  
 Quadrangle West Union 112  
 County Tyler District Meade  
 Engineer Leland G. Merrill  
 Engineer's Registration No. 152  
 File No. \_\_\_\_\_ Drawing No. \_\_\_\_\_  
 Date June 8, 1955 Scale 1" = 400'

STATE OF WEST VIRGINIA  
 DEPARTMENT OF MINES  
 OIL AND GAS DIVISION  
 CHARLESTON

WELL LOCATION MAP  
 FILE NO. JYL-236

+ Denotes location of well on United States Topographic Maps, scale 1 to 62,500, latitude and longitude lines being represented by border lines as shown.  
 - Denotes one inch spaces on border line of original tracing.

6-6 86



STATE OF WEST VIRGINIA  
DEPARTMENT OF MINES  
OIL AND GAS DIVISION

WELL RECORD

Quadrangle \_\_\_\_\_

Permit No. TYL-236

Oil or Gas Well Oil  
(KIND)

Company George C. Schoonmaker  
Address 702 Old National Bank Bldg. Evansville, Indiana.  
Farm W. G. Snodgrass Acres 100  
Location (waters) Sugar Creek  
Well No. 11 Elev. 1132'  
District Meade County Tyler  
The surface of tract is owned in fee by \_\_\_\_\_  
Address \_\_\_\_\_  
Mineral rights are owned by \_\_\_\_\_  
Address \_\_\_\_\_  
Drilling commenced July 14, 1955  
Drilling completed August 5, 1955  
Date Shot 9/28/55 From 2031 To 2060

Casing and Tubing	Used in Drilling	Left in Well	Packers
Size			Kind of Packer _____
16			
13			
10			Size of _____
8 1/4	154	154	Depth set _____
6 5/8			
5 3/16 5 1/2		2020	Perf. top _____
3			Perf. bottom _____
2			Perf. top _____
Liners Used			Perf. bottom _____

With \_\_\_\_\_  
Open Flow \_\_\_\_\_ /10ths Water in \_\_\_\_\_ Inch  
\_\_\_\_\_ /10ths Merc. in \_\_\_\_\_ Inch  
Volume \_\_\_\_\_ Cu. Ft.  
Rock Pressure \_\_\_\_\_ lbs. \_\_\_\_\_ hrs.  
Oil \_\_\_\_\_ bbls., 1st 24 hrs.  
Fresh water \_\_\_\_\_ feet \_\_\_\_\_ feet  
Salt water \_\_\_\_\_ feet \_\_\_\_\_ feet

CASING CEMENTED 5 1/2 SIZE 2020 No. Ft. 8/5/56 Date  
COAL WAS ENCOUNTERED AT \_\_\_\_\_ FEET \_\_\_\_\_ INCHES  
\_\_\_\_\_ FEET \_\_\_\_\_ INCHES FEET \_\_\_\_\_ INCHES  
\_\_\_\_\_ FEET \_\_\_\_\_ INCHES FEET \_\_\_\_\_ INCHES

Formation	Color	Hard or Soft	Top	Bottom	Oil, Gas or Water	Depth Found	Remarks
Shale		Soft	0	154			
Sand-Lime			154	1100			
Sand			1100	1116			
Shale			1116	1160	1894		
Sand			1160	1214			
Shale			1214	1344	1132		
Sand		Hard	1344	1368	762		
Broken sand			1368	1418			
Sand		Hard	1418	1435			
Shale			1435	1539			
Broken sand			1539	1564			
Sand		Hard	1564	1632			
Shale			1632	1702			
Sand-shells			1702	1768			
Shale			1768	1832			
Sand-shells			1832	1866			
Lime			1866	1883			
Shale			1883	1894			
Lime			1894	1975			
Sand-shells			1975	1990			
Sand		Hard	1990	2014			
Sand			2014	2052			
Total depth				2052			

