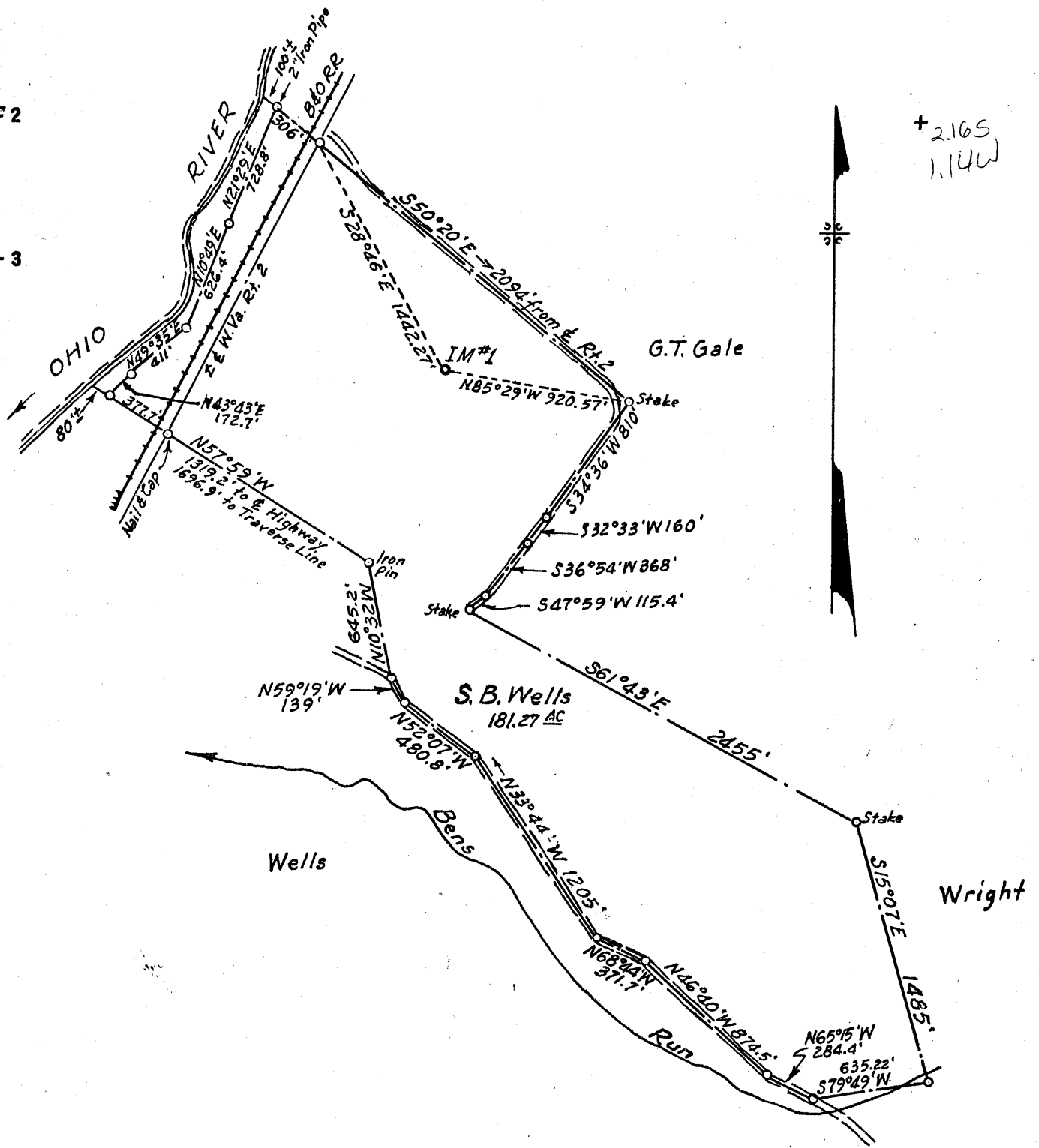


Latitude 39° 30'

Longitude 81° 05'



+ 2.165
1.14W

- New Location..
- Drill Deeper.....
- Abandonment.....

never drilled - WDEP database

Company GEORGE SCHOONMAKER

Address ST. MARYS, W. VA.

Farm S. B. WELLS

Tract _____ Acres 181.27 Lease No. _____

Well (Farm) No. IM #1 Serial No. _____

Elevation (Spirit Level) 643.00

Quadrangle ST. MARYS *nc*

County TYLER District UNION

Engineer L. G. MERRILL

Engineer's Registration No. 152

File No. _____ Drawing No. _____

Date Aug. 19, 1955 Scale 1"=800'

61191956 *canc 08/24/1956*
STATE OF WEST VIRGINIA
 DEPARTMENT OF MINES
 OIL AND GAS DIVISION
 CHARLESTON

WELL LOCATION MAP
 FILE NO. JYL-240

+ Denotes location of well on United States Topographic Maps, scale 1 to 62,500, latitude and longitude lines being represented by border lines as shown.

- Denotes one inch spaces on border line of original tracing.