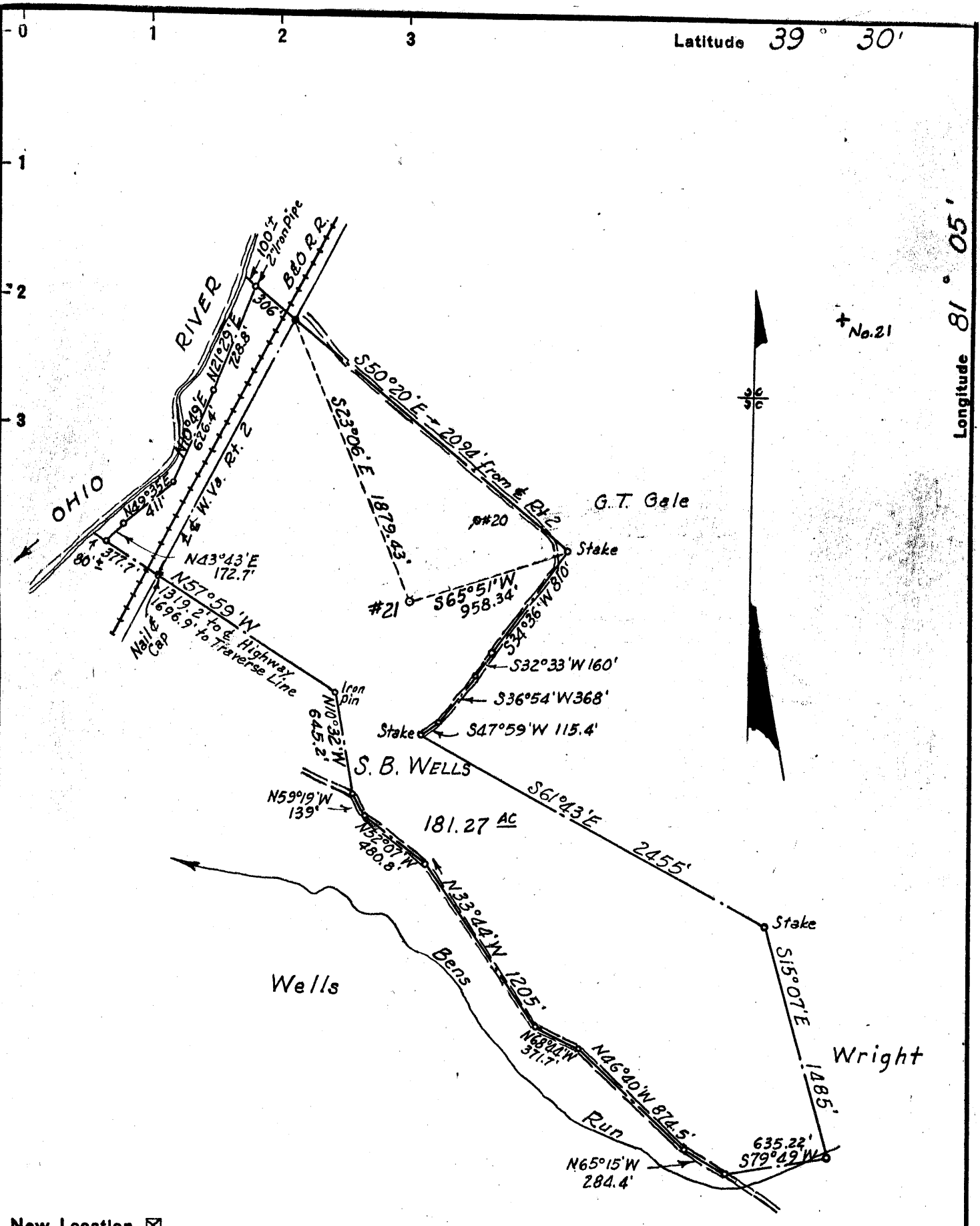


Latitude 39° 30'

Longitude 81° 05'



New Location..
 Drill Deeper.....
 Abandonment.....

never drilled - WV DEP database

Company GEORGE SCHOONMAKER
 Address ST. MARYS, W. VA.
 Farm S. B. WELLS
 Tract _____ Acres 181.27 Lease No. _____
 Well (Farm) No. 21 Serial No. _____
 Elevation (Spirit Level) 642.60
 Quadrangle ST. MARYS
 County TYLER District UNION
 Engineer L. G. MERRILL
 Engineer's Registration No. 152
 File No. _____ Drawing No. _____
 Date Aug. 19, 1955 Scale 1" = 800'

6119/95 kla - conc 8/24/1956
 STATE OF WEST VIRGINIA
 DEPARTMENT OF MINES
 OIL AND GAS DIVISION
 CHARLESTON

WELL LOCATION MAP
 FILE NO. JYL-241

+ Denotes location of well on United States Topographic Maps, scale 1 to 62,500, latitude and longitude lines being represented by border lines as shown.

- Denotes one inch spaces on border line of original tracing.