

New Location   
 Drill Deeper   
 Abandonment  6/8/76

Note: a complete survey of this property was made in 1954.

Company	JOHN SMITH
Address	Bx 105 Bens Run WY 26135
Farm	J.S. WELLS
Tract	Acres 409.18 57 Lease No.
Well (Farm) No.	No. 1 MI Serial No.
Elevation (Spirit Level)	603.5
Quadrangle	ST. MARYS NC
County	Tyler District UNION
Engineer	LELAND G. MERRILL
Engineer's Registration No.	152
File No.	Drawing No.
Date	SEPT. 26, 1955 Scale 1" = 800'

STATE OF WEST VIRGINIA  
 DEPARTMENT OF MINES  
 OIL AND GAS DIVISION  
 CHARLESTON

## WELL LOCATION MAP

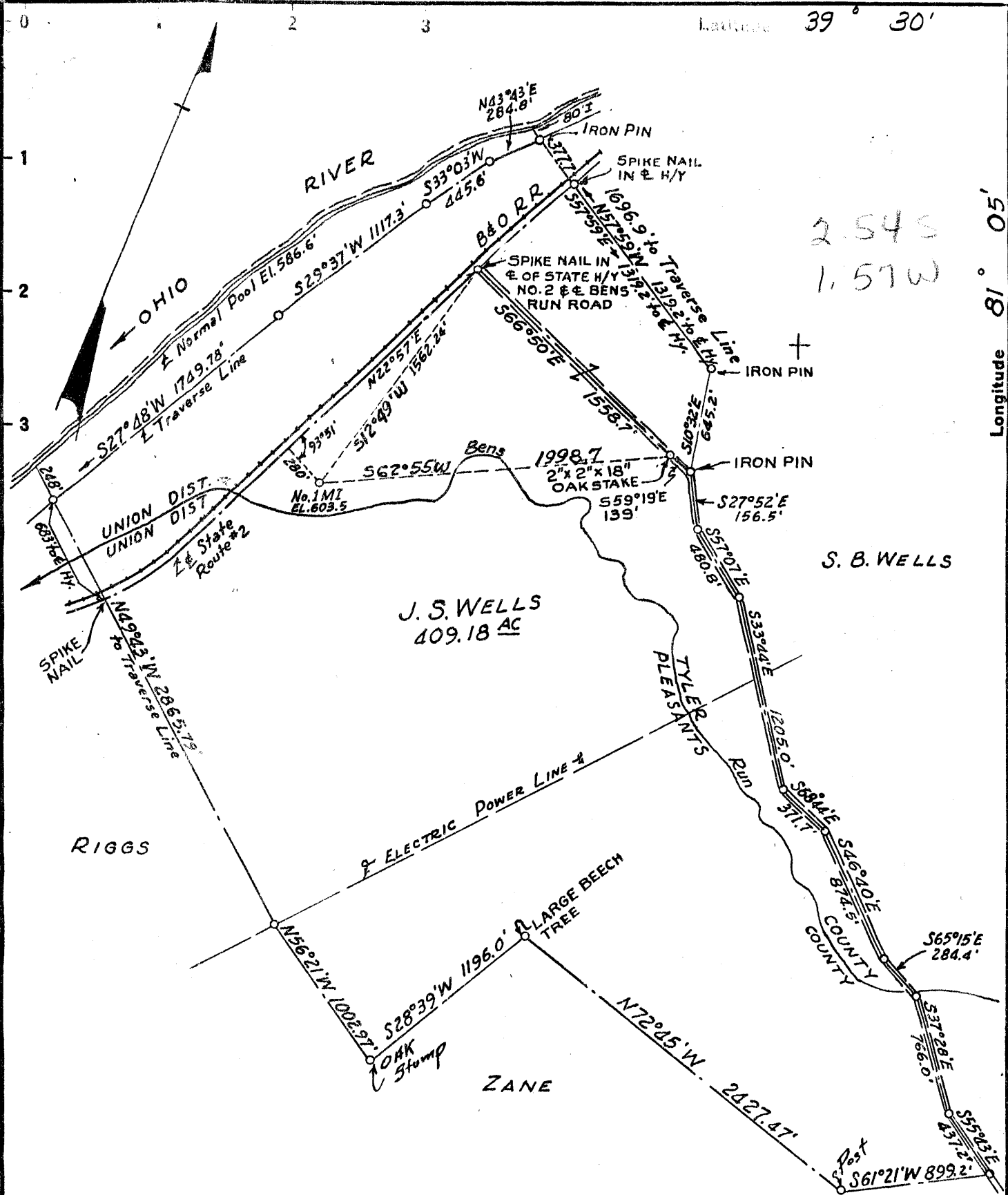
FILE NO. JYL-247-P

+ Denotes location of well on United States Topographic Maps, scale 1 to 62,500, latitude and longitude lines being represented by border lines as shown.

- Denotes one inch spaces on border line of original tracing.

JUN 18 1976

# 47-095



2.54 S  
1.57 W

S. B. WELLS

J. S. WELLS  
409.18 AC

RIGGS

ZANE

Note: a complete survey of this Property was made in 1954.

- New Location..
- Drill Deeper.....
- Abandonment.....

Company GEORGE SCHOONMAKER  
 Address St. Marys, W. Va.  
 Farm J. S. WELLS  
 Tract \_\_\_\_\_ Acres 409.18 Lease No. \_\_\_\_\_  
 Well (Farm) No. No. 1 MI Serial No. \_\_\_\_\_  
 Elevation (Spirit Level) 603.5  
 Quadrangle ST. MARYS  
 County Tyler District UNION  
 Engineer LELAND G. MERRILL  
 Engineer's Registration No. 152  
 File No. \_\_\_\_\_ Drawing No. \_\_\_\_\_  
 Date SEPT. 26, 1955 Scale 1" = 800'

STATE OF WEST VIRGINIA  
 DEPARTMENT OF MINES  
 OIL AND GAS DIVISION  
 CHARLESTON

**WELL LOCATION MAP**  
 FILE NO. JYL-247

+ Denotes location of well on United States Topographic Maps, scale 1 to 62,500, latitude and longitude lines being represented by border lines as shown.

- Denotes one inch spaces on border line of original tracing.



STATE OF WEST VIRGINIA  
DEPARTMENT OF MINES  
OIL AND GAS DIVISION

WELL RECORD

Quadrangle H. Mans

Permit No. Tyl-247

Oil or Gas Well Oil  
(KIND)

Company George C. Schoonmaker  
Address 702 Old National Bank Bldg. Evansville, Indiana  
Farm J. S. Wells Acres 409.18  
Location (waters) Bens Run  
Well No. IM-57 Elev. 603.5  
District Union County Tyler  
The surface of tract is owned in fee by J. S. Wells  
Address Bens Run, W. Va.  
Mineral rights are owned by J. S. Wells  
Address \_\_\_\_\_  
Drilling commenced Oct. 6, 1955  
Drilling completed Oct. 10, 1955  
Date Shot not shot from \_\_\_\_\_ To \_\_\_\_\_  
With \_\_\_\_\_  
Open Flow \_\_\_\_\_ /10ths Water in \_\_\_\_\_ Inch  
\_\_\_\_\_ /10ths Merc. in \_\_\_\_\_ Inch  
Volume \_\_\_\_\_ Cu. Ft.  
Rock Pressure \_\_\_\_\_ lbs. \_\_\_\_\_ hrs.  
Oil \_\_\_\_\_ bbls., 1st 24 hrs.  
Fresh water \_\_\_\_\_ feet \_\_\_\_\_ feet  
Salt water \_\_\_\_\_ feet \_\_\_\_\_ feet

Casing and Tubing	Used in Drilling	Left in Well	Packers
Size			Kind of Packer
16			
13			
10			Size of
8 1/4	61.59	61.59	
6 5/8		<del>1178</del>	Depth set
5 3/16		1178	
3			Perf. top
2			Perf. bottom
Liners Used			Perf. top
			Perf. bottom

CASING CEMENTED 5 1/2 SIZE 600 No. Ft. \_\_\_\_\_ Date \_\_\_\_\_

COAL WAS ENCOUNTERED AT No FEET \_\_\_\_\_ INCHES  
\_\_\_\_\_ FEET \_\_\_\_\_ INCHES FEET \_\_\_\_\_ INCHES  
\_\_\_\_\_ FEET \_\_\_\_\_ INCHES FEET \_\_\_\_\_ INCHES

Formation	Color	Hard or Soft	Top	Bottom	Oil, Gas or Water	Depth Found	Remarks
Shale			0	200			
Sand, Shale & Lime			200	324			
Sand		Hard	324	368			
Shale & Lime			368	480			
Shale			480	500			
Lime			500	528			
Shale			528	534			
Sand		Hard	534	578			
Shale			578	602			
Sand			602	629			
Shale			629	637			
Lime			637	652			
Lime & Shale			652	697			
Shelly Sand			697	732			
Lime			732	774			
Shelly Sand			774	795			
Shelly Lime & Sand			795	920			
Sand			920	950			
Lime & Sand		Hard	950	1010			
Sand			1010	1021			
Shale			1021	1030			
Sand			1030	1055			
Lime, Shale & Sand			1055	1147			
Lime			1147	1178			
Sand			1178	1214			
Shale			1214	1217			
Broken Sand			1217	1226			
Sand <u>1ST CR?</u>			1226	1245			
Total Depth				1245			

